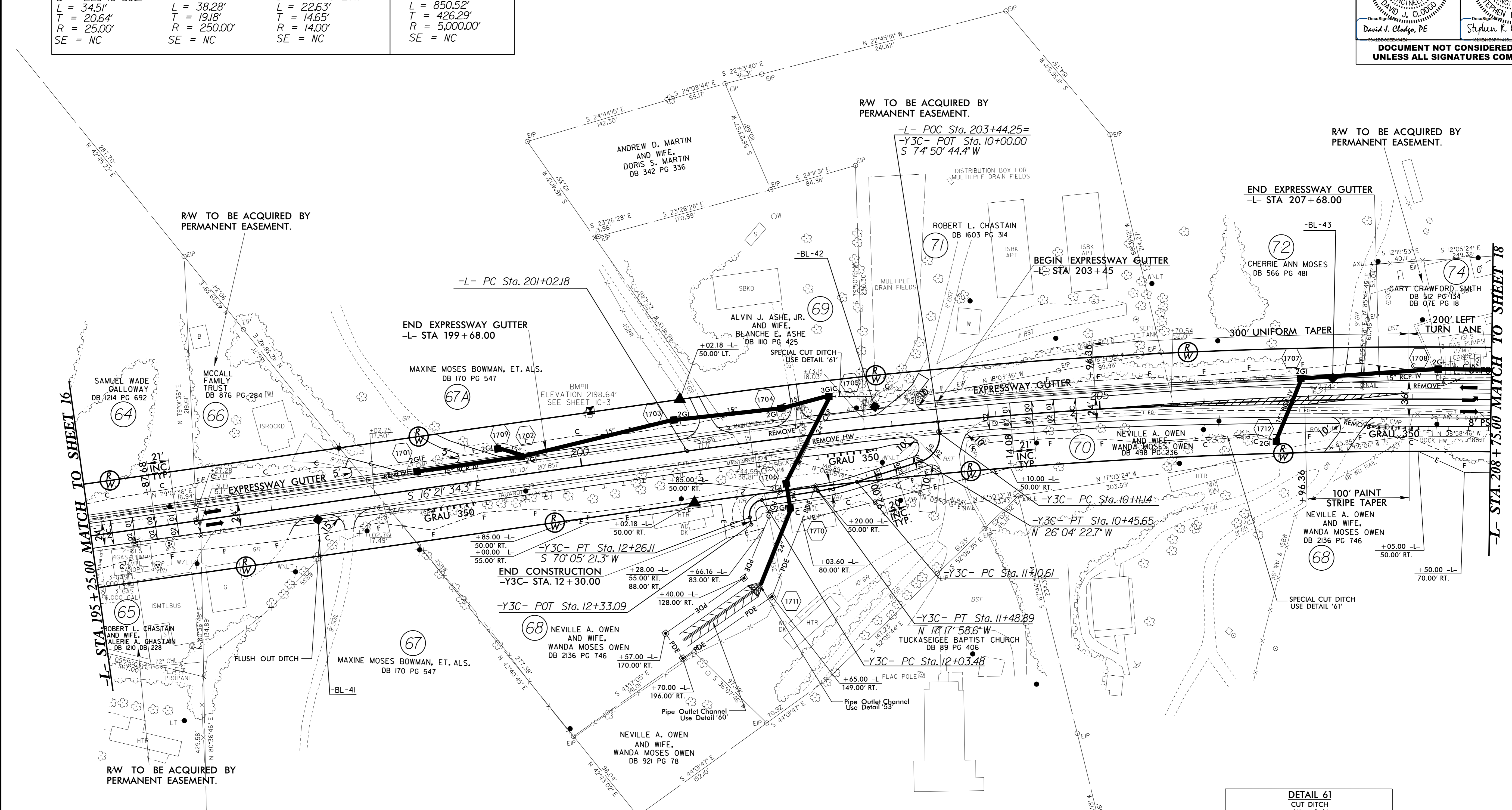


PROJECT REFERENCE NO. R-4753		SHEET NO. 17	
RW SHEET NO.			
ROADWAY DESIGN ENGINEER		HYDRAULICS ENGINEER	
DOCUMENT NOT CONSIDERED FINAL UNLESS ALL SIGNATURES COMPLETED			

NAD 83/NSRS 2007

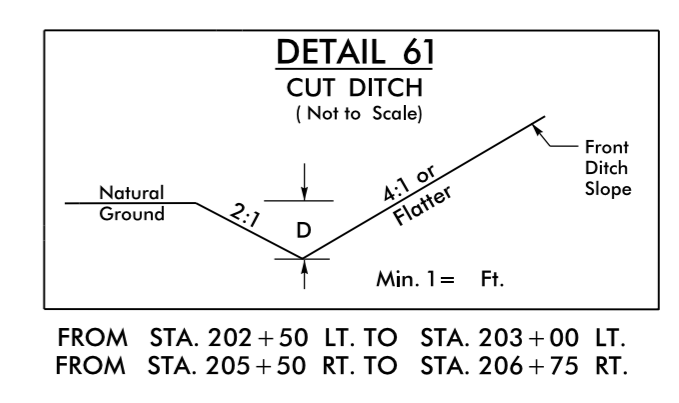
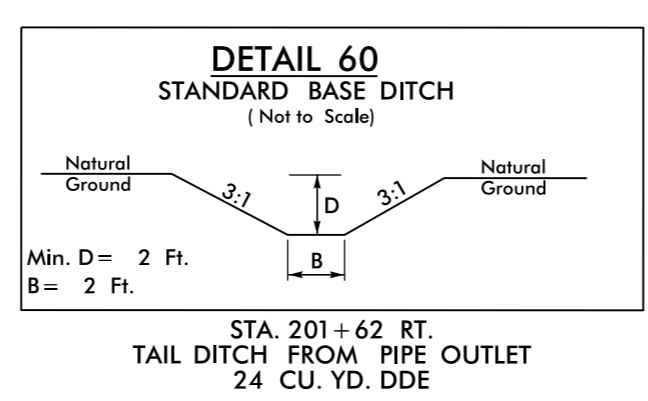
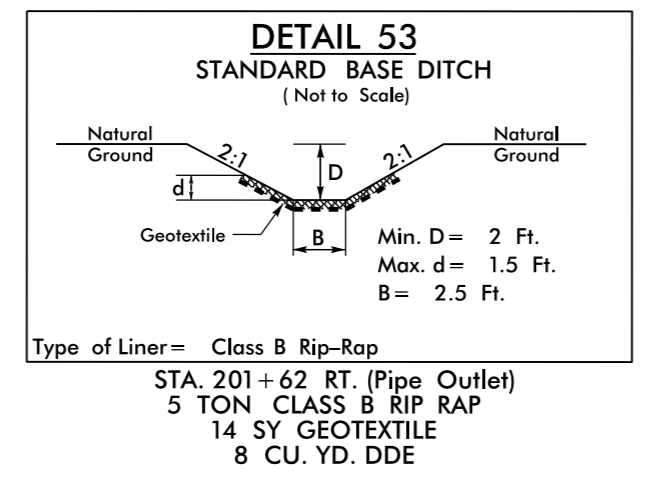
-Y3C-			-L-
PI Sta 10+31.78	PI Sta 11+29.79	PI Sta 12+18.13	PI Sta 205+28.46
$\Delta = 79^{\circ}04'52.9"$ (RT)	$\Delta = 8^{\circ}46'24.1"$ (RT)	$\Delta = 92^{\circ}36'40.0"$ (LT)	$\Delta = 9^{\circ}44'46.4"$ (RT)
D = 229'10" 59.2"	D = 22'55" 05.9"	D = 409'15" 20.0"	D = 108' 45.3"
L = 34.51'	L = 38.28'	L = 22.63'	L = 850.52'
T = 20.64'	T = 19.18'	T = 14.65'	T = 426.29'
R = 25.00'	R = 250.00'	R = 14.00'	R = 5,000.00'
SE = NC	SE = NC	SE = NC	SE = NC



MATCH TO SHEET 16
-L- STA 195 + 25.00

MATCH TO SHEET 18
-L- STA. 208 + 75.00

REVISIONS



Note: All Driveway Radii are 20' Unless Otherwise Noted
 Note: Tie all Driveways to the Right of Way Line. Follow the "Pavement Design for Driveways" Memo Dated March 18, 2002 or as Directed by the Engineer
 Note: All Proposed Guardrail to Use Weathered Steel Unless Otherwise Noted

PROP. PAINT STRIPING
 SEE SHEET 25 FOR -L- PROFILE
 SEE SHEET 28 FOR -Y3C- PROFILE

Invalid express90...
USER: N:\PROJECTS\17531_Rdy_psh17.dgn