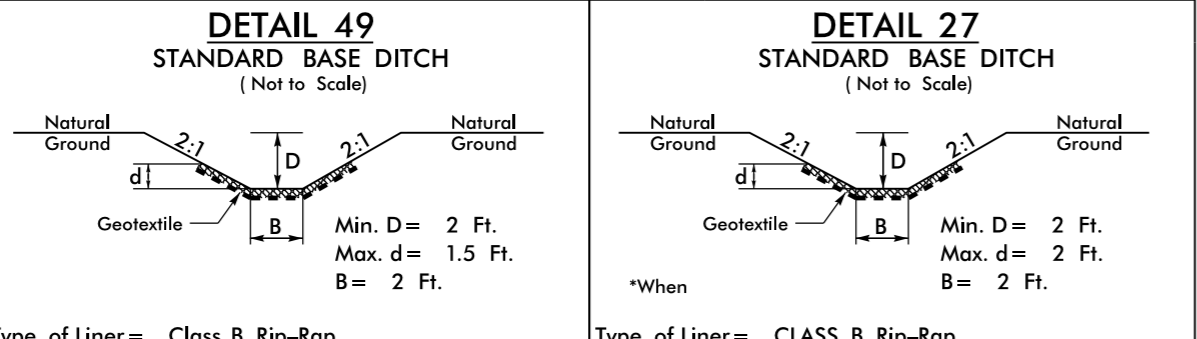


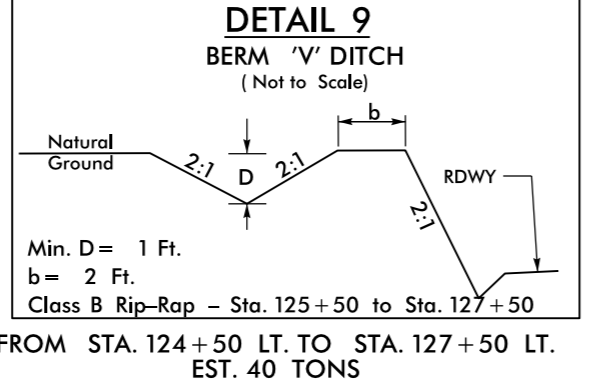
PROJECT REFERENCE NO. R-4753		SHEET NO. 11	
RW SHEET NO.			
ROADWAY DESIGN ENGINEER		HYDRAULICS ENGINEER	
DOCUMENT NOT CONSIDERED FINAL UNLESS ALL SIGNATURES COMPLETED			

-L-	-Y3A-	
PI Sta 128+00.46	PI Sta 11+5.66	PI Sta 13+37.87
$\Delta = 114' 22' 34.4''$ (LT)	$\Delta = 108' 52' 23.8''$ (RT)	$\Delta = 33' 46' 55.2''$ (RT)
D = 16' 22' 12.8"	D = 114' 35' 29.6"	D = 19' 05' 54.9"
L = 698.68'	L = 95.01'	L = 176.88'
T = 542.85'	T = 69.93'	T = 91.0'
$R = 350.00'$ (35mph)	R = 50.00'	R = 300.00'
SE = .08	SE = SEE PLANS	SE = SEE PLANS
RO = 168'		

** Design Exception Required For Horizontal Curve Radius



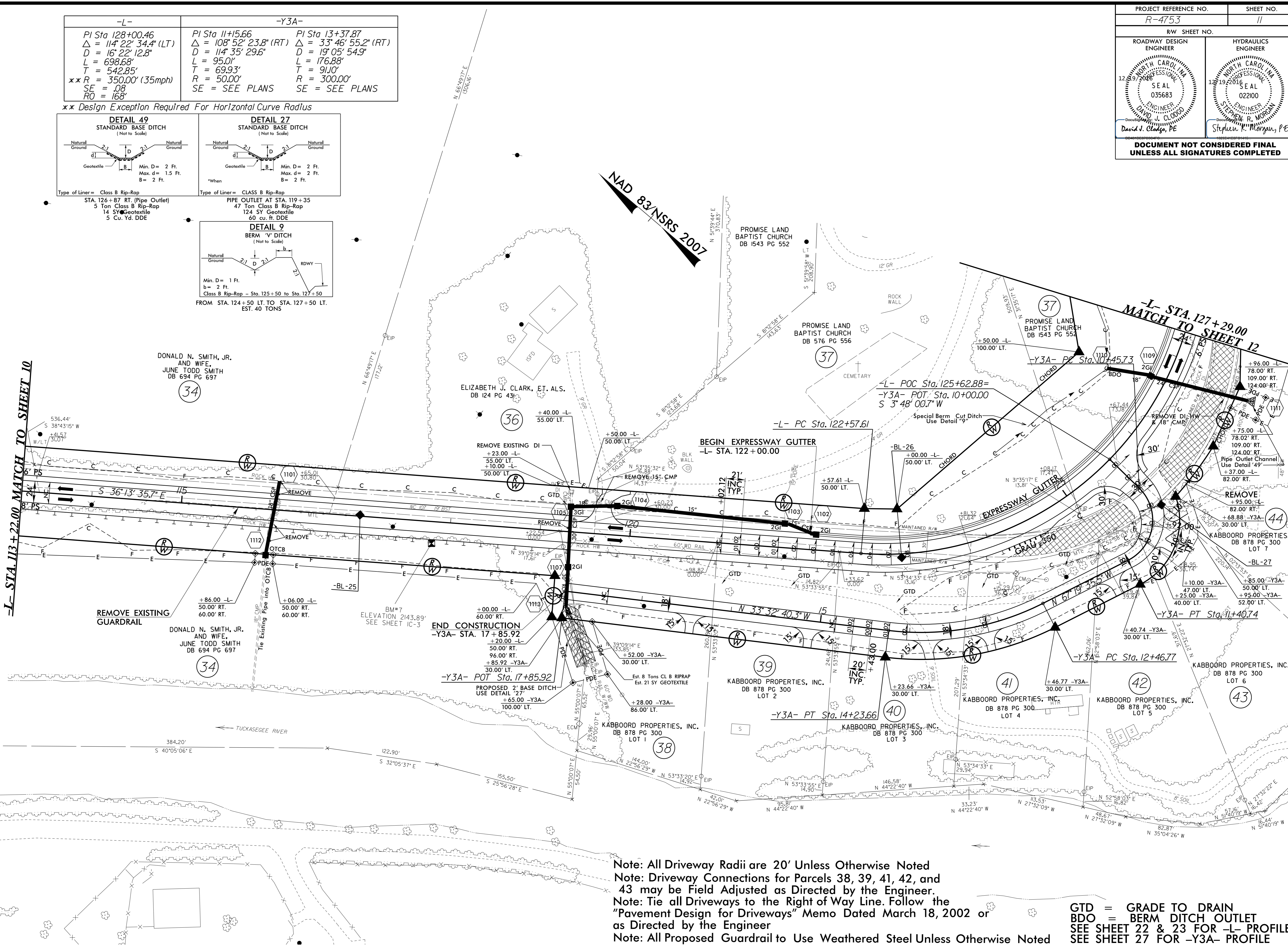
Type of Liner = Class B Rip-Rap
 STA. 126+87 RT. (Pipe Outlet)
 5 Ton Class B Rip-Rap
 14 SY Geotextile
 5 Cu. Yd. DDE



Min. D = 1 Ft.
 b = 2 Ft.
 Class B Rip-Rap - Sta. 125+50 to Sta. 127+50
 FROM STA. 124+50 LT. TO STA. 127+50 LT.
 EST. 40 TONS

REVISIONS

-L- STA. 113+22.00 MATCH TO SHEET 10



Note: All Driveway Radii are 20' Unless Otherwise Noted
 Note: Driveway Connections for Parcels 38, 39, 41, 42, and 43 may be Field Adjusted as Directed by the Engineer.
 Note: Tie all Driveways to the Right of Way Line. Follow the "Pavement Design for Driveways" Memo Dated March 18, 2002 or as Directed by the Engineer
 Note: All Proposed Guardrail to Use Weathered Steel Unless Otherwise Noted

GTD = GRADE TO DRAIN
 BDO = BERM DITCH OUTLET
 SEE SHEET 22 & 23 FOR -L- PROFILE
 SEE SHEET 27 FOR -Y3A- PROFILE

Invalid expressgdb... Rdy...esh11.dgn