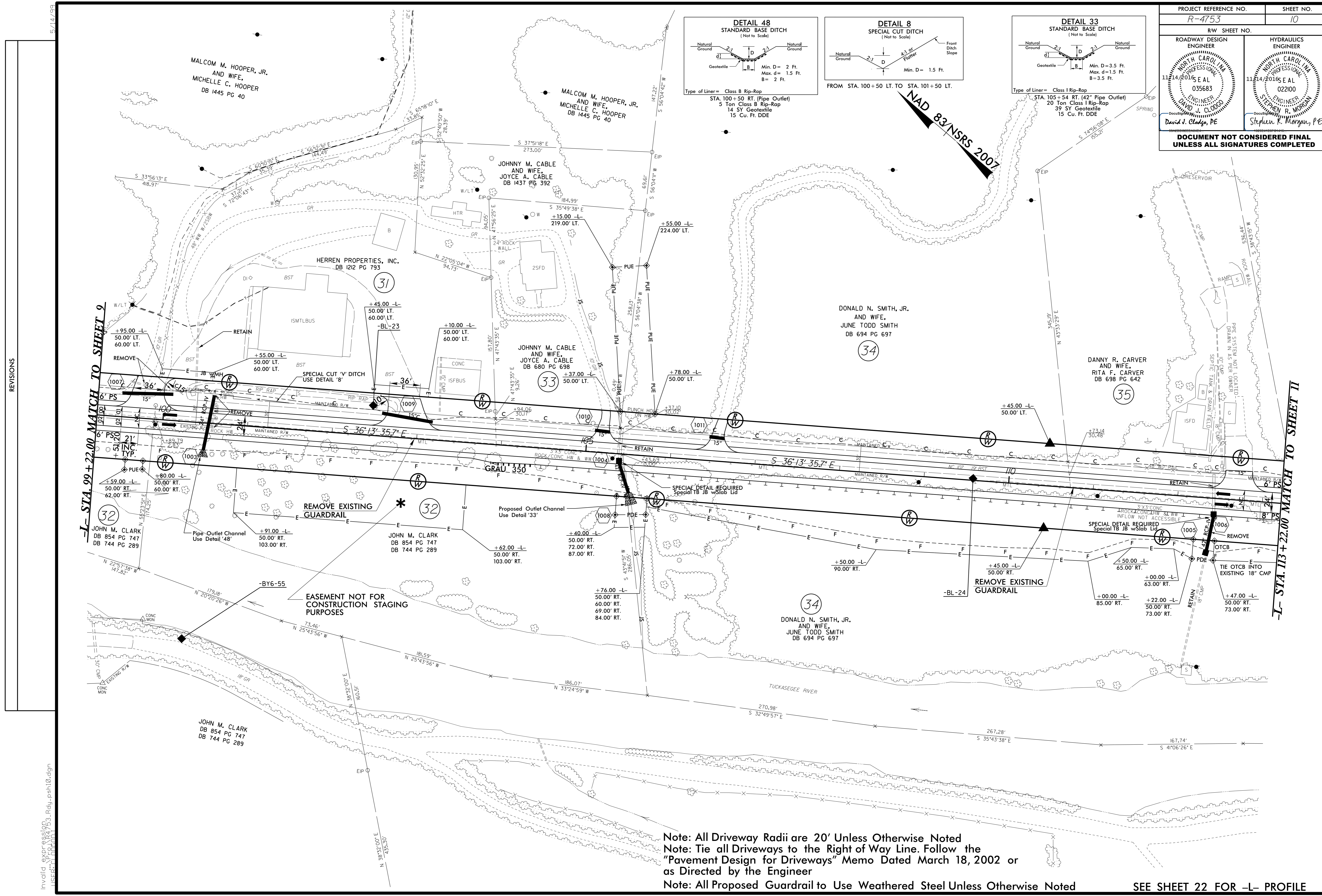
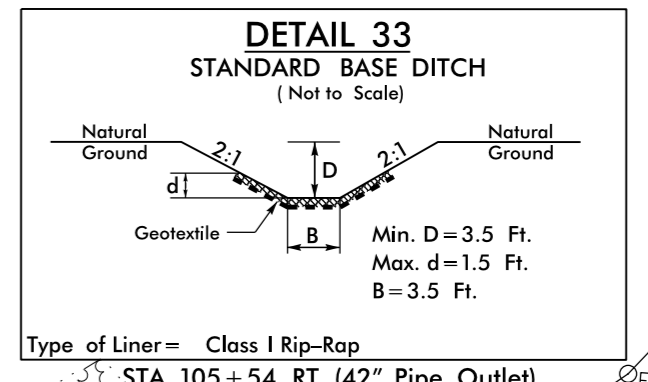
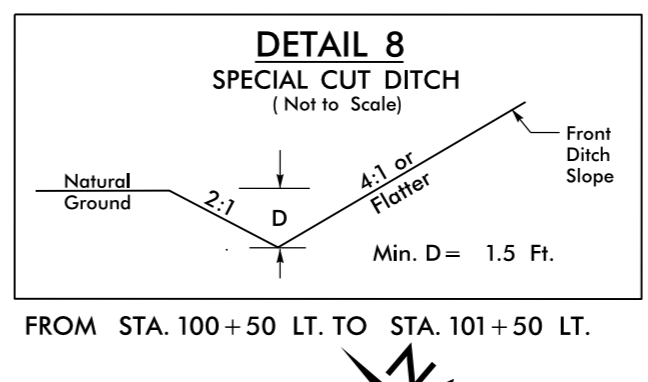
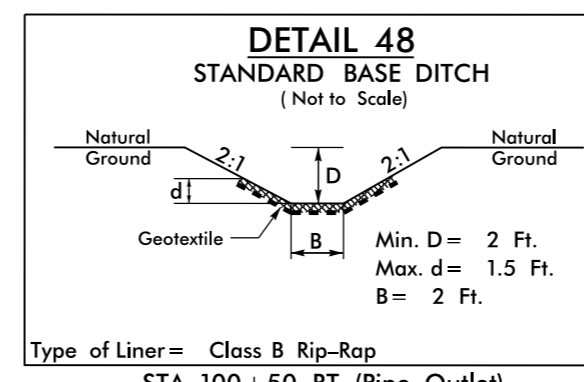


PROJECT REFERENCE NO. R-4753		SHEET NO. 10	
RW SHEET NO.			
ROADWAY DESIGN ENGINEER		HYDRAULICS ENGINEER	
<p>David J. Cloddo, PE</p> <p>Stephen R. Morgan, PE</p> <p><b>DOCUMENT NOT CONSIDERED FINAL UNLESS ALL SIGNATURES COMPLETED</b></p>			



REVISIONS

-L- STA. 99 + 22.00 MATCH TO SHEET 9

-L- STA. 113 + 22.00 MATCH TO SHEET 11

Note: All Driveway Radii are 20' Unless Otherwise Noted  
 Note: Tie all Driveways to the Right of Way Line. Follow the "Pavement Design for Driveways" Memo Dated March 18, 2002 or as Directed by the Engineer  
 Note: All Proposed Guardrail to Use Weathered Steel Unless Otherwise Noted

SEE SHEET 22 FOR -L- PROFILE

Invalid ExpressG...  
LUSER: N:\D\...  
5/14/2016 10:53:10 AM