

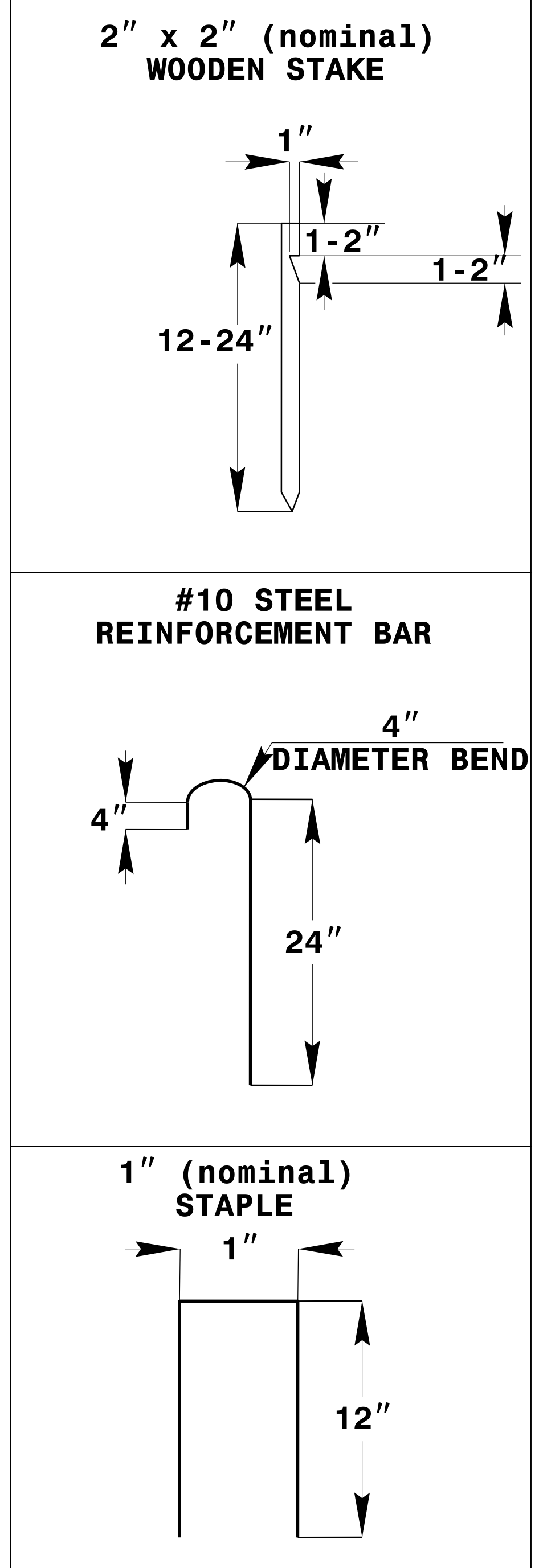
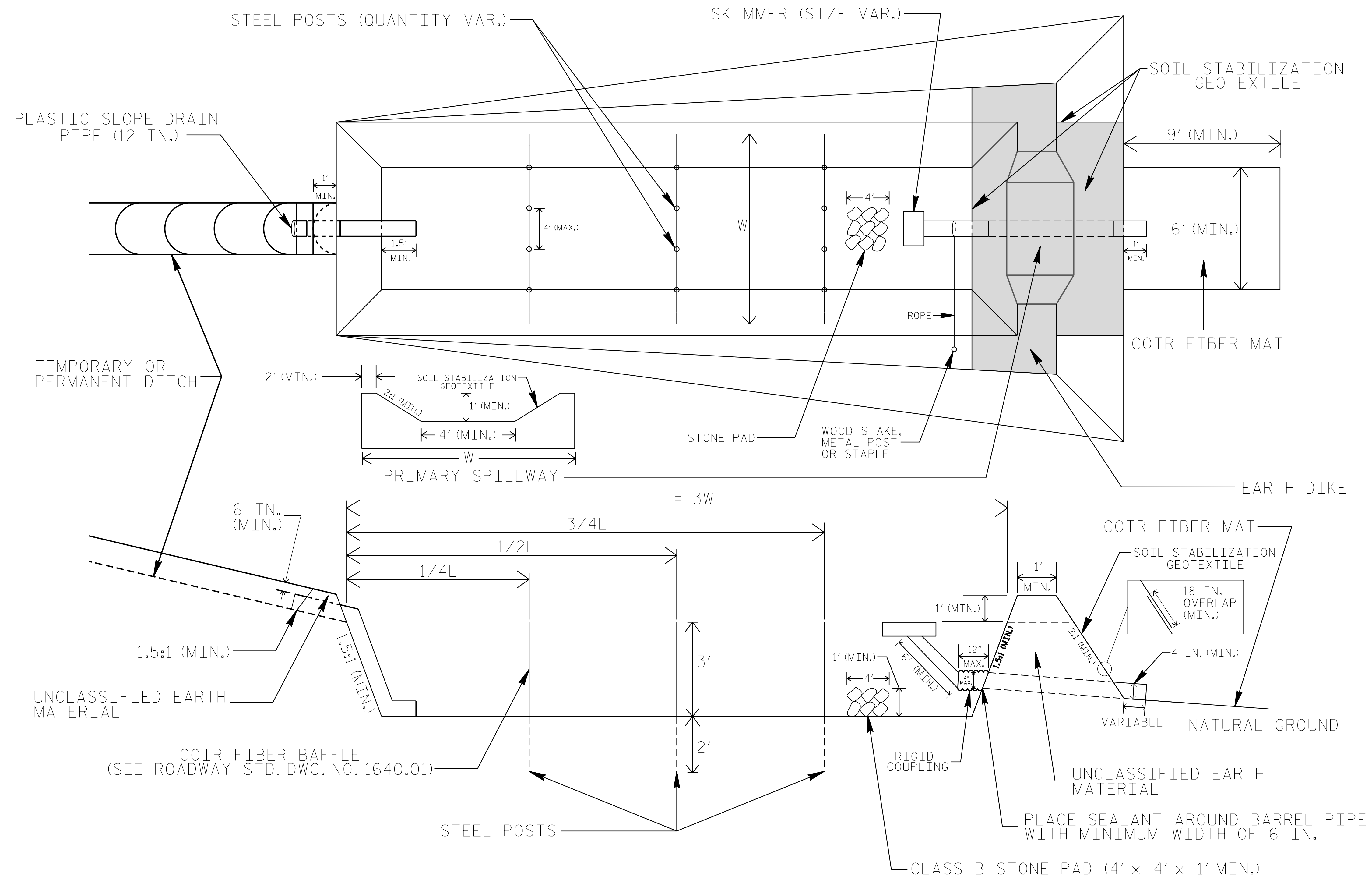
**This electronic collection of documents is provided
for the convenience of the user
and is Not a Certified Document –**

**The documents contained herein were originally issued
and sealed by the individuals whose names and license
numbers appear on each page, on the dates appearing
with their signature on that page.**

**This file or an individual page
shall not be considered a certified document.**

PROJECT REFERENCE NO. B-5548	SHEET NO. EC-2
RW SHEET NO.	
ROADWAY DESIGN ENGINEER	HYDRAULICS ENGINEER

SKIMMER BASIN WITH BAFFLES DETAIL



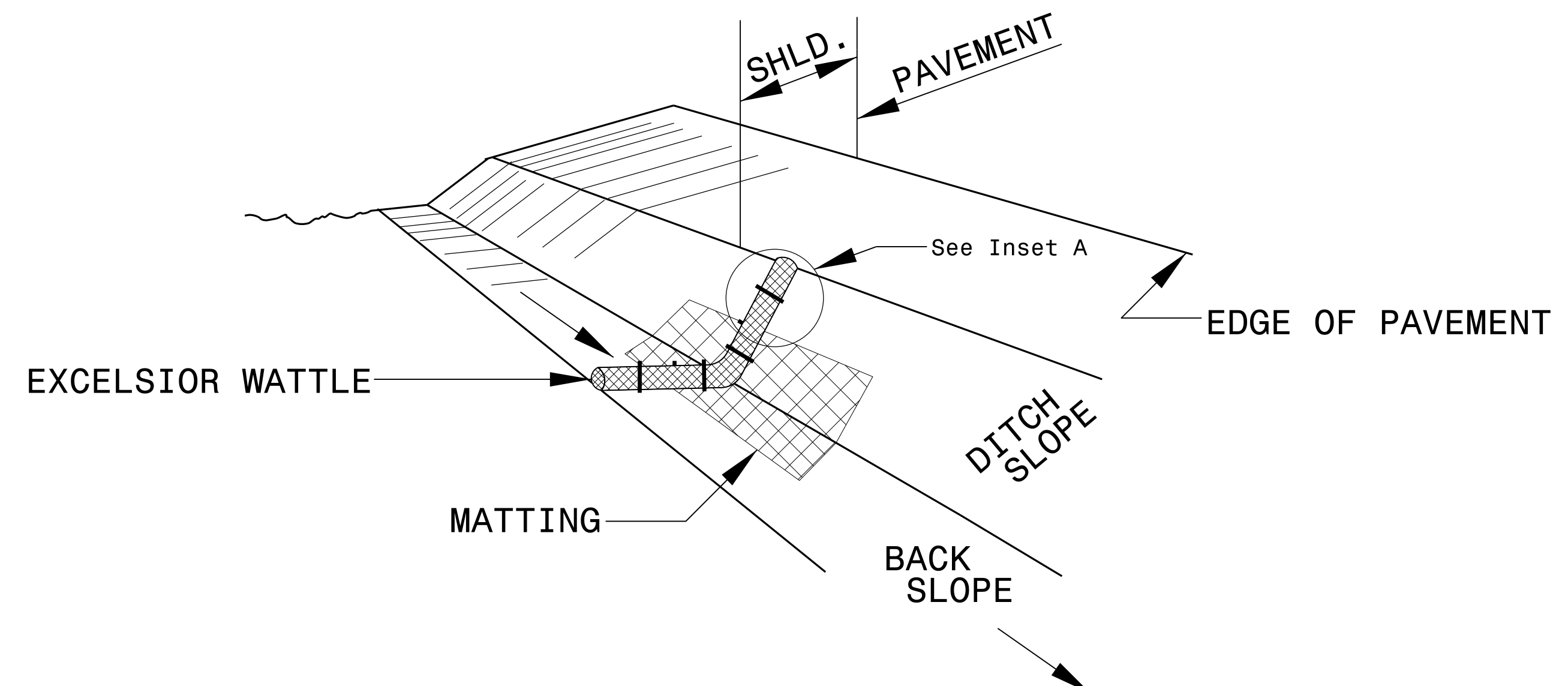
NOTES

1. SEED AND PLACE MATTING FOR EROSION CONTROL ON INTERIOR AND EXTERIOR SIDESLOPES.
2. LIMIT EARTH DIKE HEIGHT TO 5 FT.
3. FOR BASIN DEPTH OF 3 FT., THE MINIMUM BASIN WIDTH SHALL BE 9 FT.
4. DETERMINE PRIMARY SPILLWAY WEIR LENGTH (FT.) USING $Q/0.8$, WHERE Q IS FLOW RATE (CFS) INTO BASIN.
5. PLASTIC SLOPE DRAIN PIPE AT INLET OF BASIN MAY BE REPLACED BY FILTRATION GEOTEXTILE OR TARP AS DIRECTED.
6. SOIL STABILIZATION GEOTEXTILE FOR PRIMARY SPILLWAY SHALL BE ONE CONTINUOUS PIECE OF MATERIAL OR OVERLAPPED 18 IN. (MIN.).

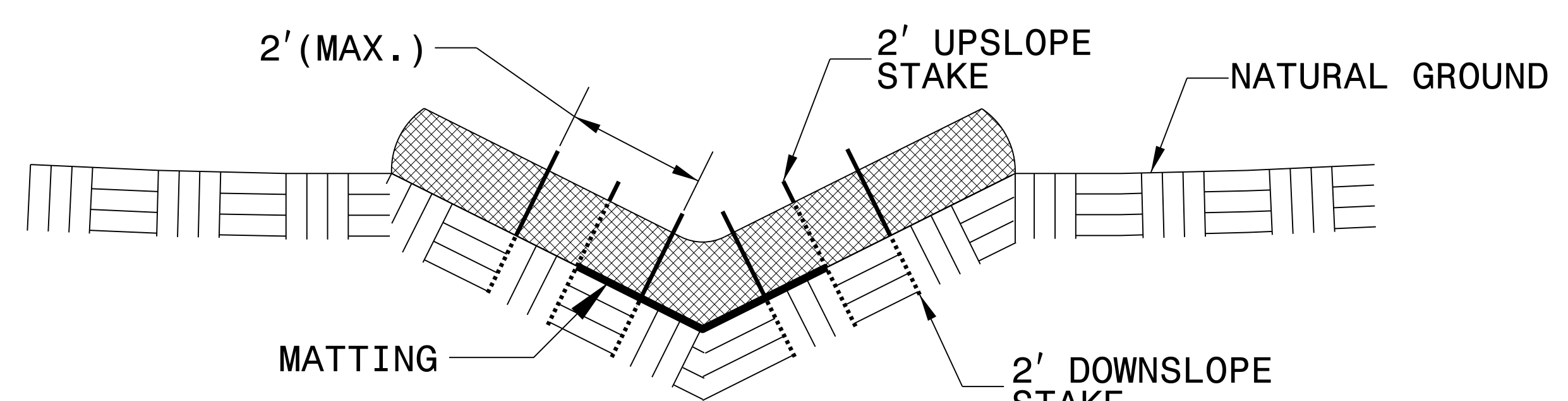
NOT TO SCALE

PROJECT REFERENCE NO. B-5548	SHEET NO. EC-2A
RW SHEET NO.	
ROADWAY DESIGN ENGINEER	HYDRAULICS ENGINEER

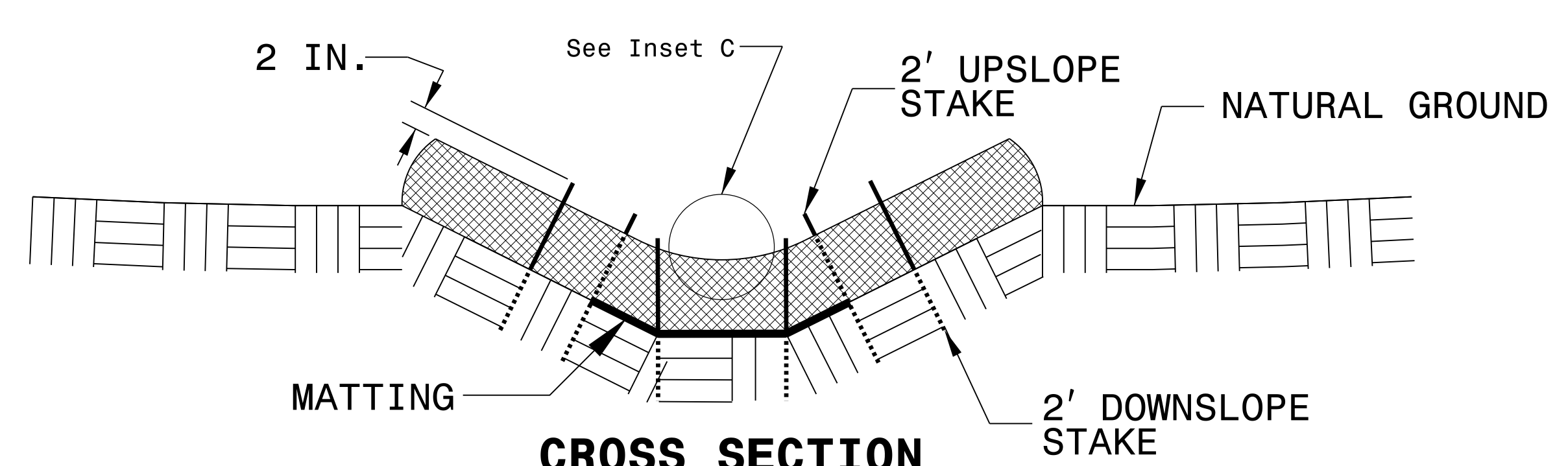
WATTLE WITH POLYACRYLAMIDE (PAM) DETAIL



ISOMETRIC VIEW

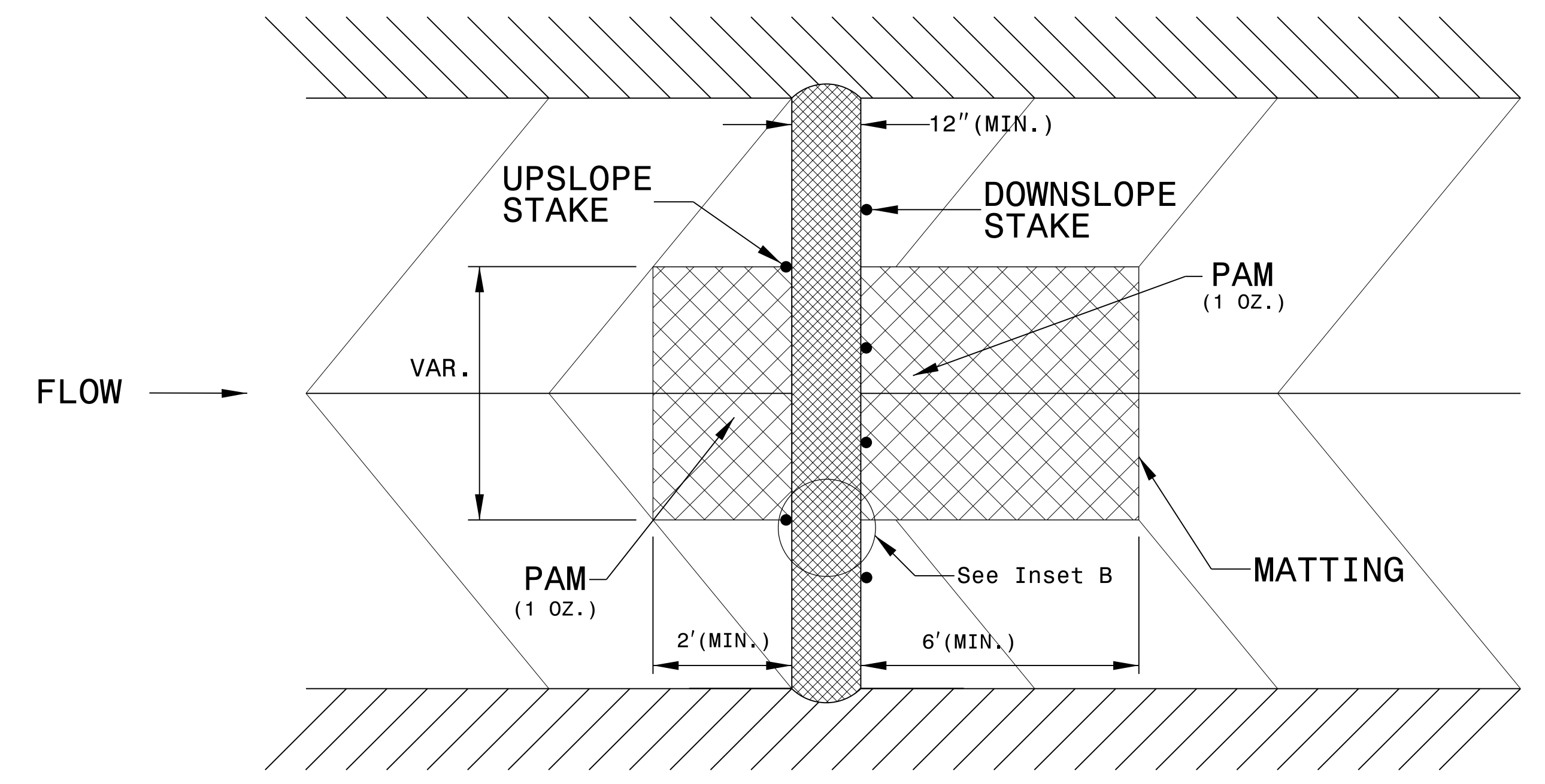
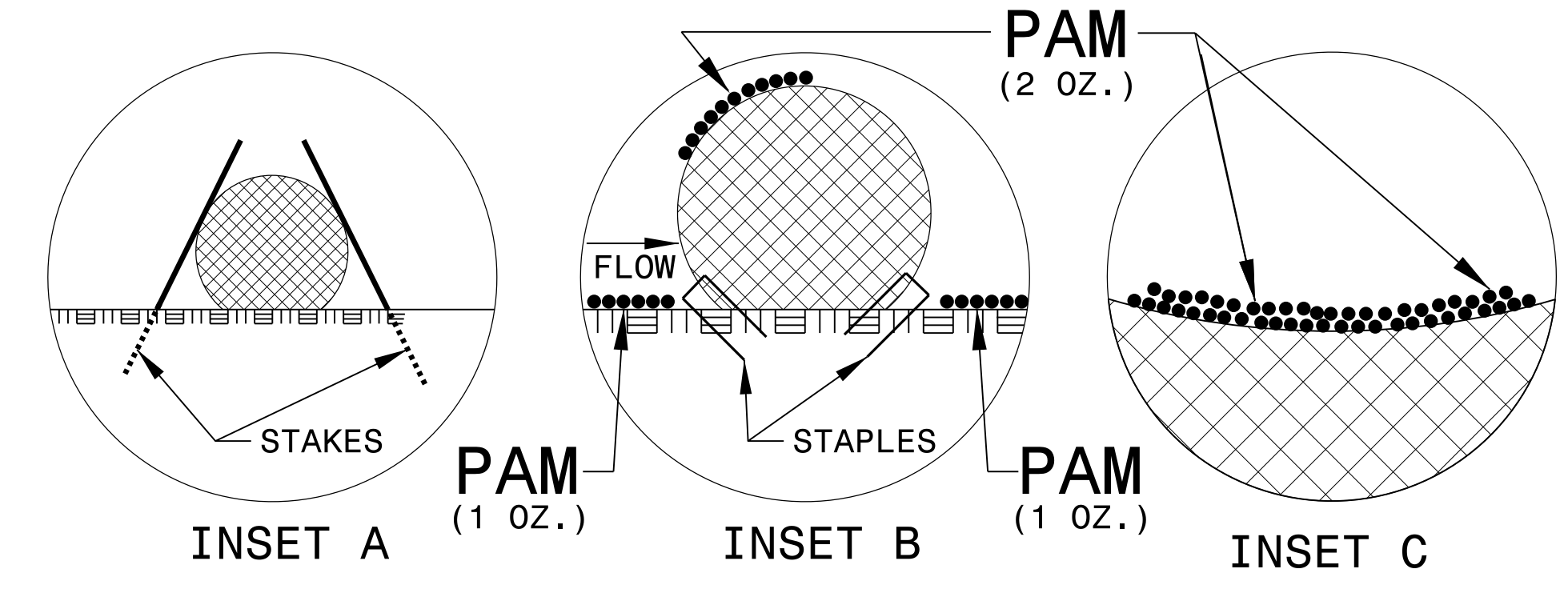


CROSS SECTION VEE DITCH



CROSS SECTION TRAPEZOIDAL DITCH

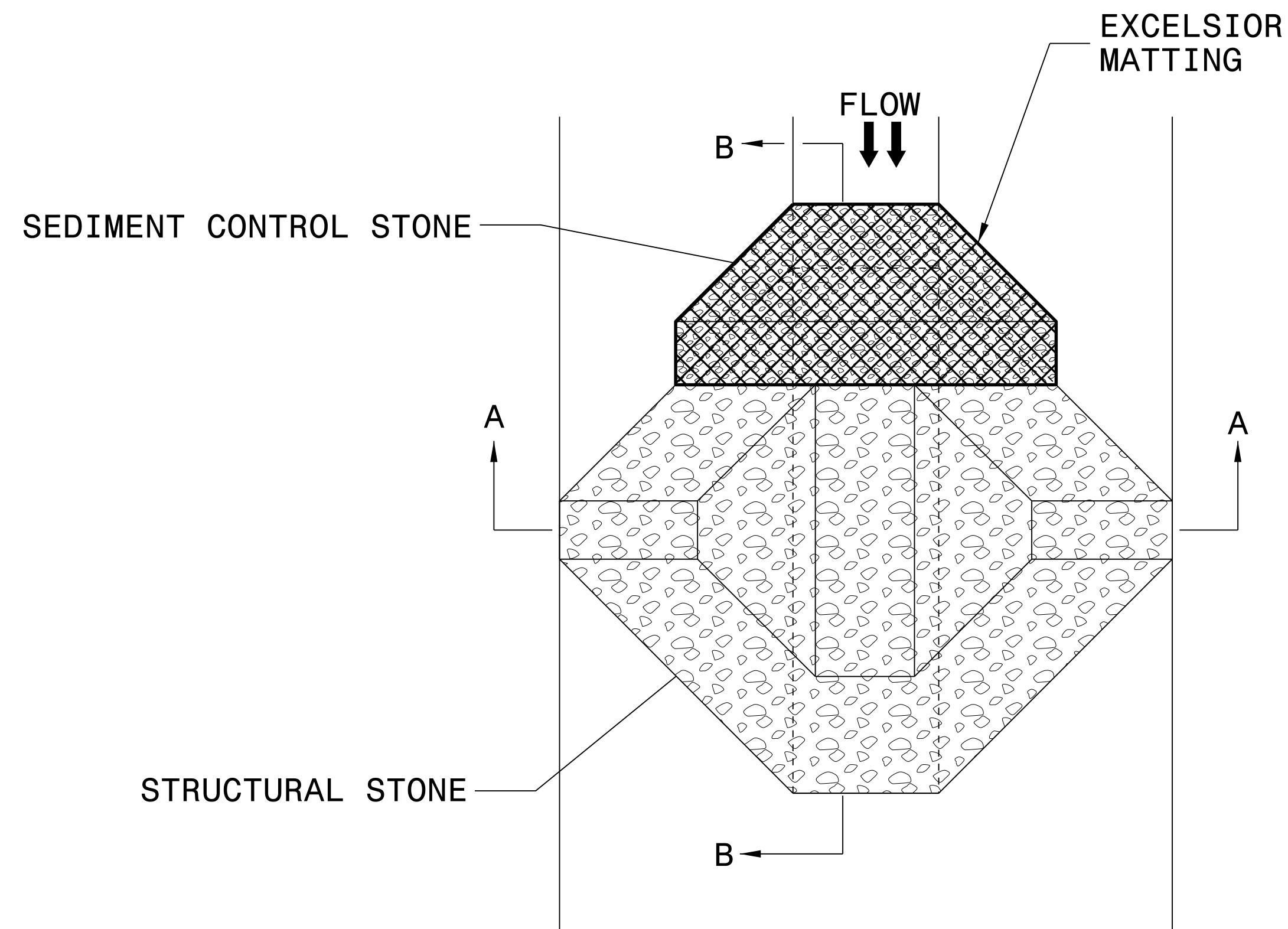
- NOTES:
- USE MINIMUM 12 IN. DIAMETER EXCELSIOR WATTLE.
 - USE 2 FT. WOODEN STAKES WITH A 2 IN. BY 2 IN. NOMINAL CROSS SECTION.
 - ONLY INSTALL WATTLE(S) TO A HEIGHT IN DITCH SO FLOW WILL NOT WASH AROUND WATTLE AND SCOUR DITCH SLOPES AND AS DIRECTED.
 - INSTALL A MINIMUM OF 2 UPSLOPE STAKES AND 4 DOWNSLOPE STAKES AT AN ANGLE TO WEDGE WATTLE TO BOTTOM OF DITCH.
 - PROVIDE STAPLES MADE OF 0.125 IN. DIAMETER STEEL WIRE FORMED INTO A U SHAPE NOT LESS THAN 12" IN LENGTH.
 - INSTALL STAPLES APPROXIMATELY EVERY 1 LINEAR FOOT ON BOTH SIDES OF WATTLE AND AT EACH END TO SECURE IT TO THE SOIL.
 - INSTALL MATTING IN ACCORDANCE WITH SECTION 1631 OF THE STANDARD SPECIFICATIONS.
 - PRIOR TO POLYACRYLAMIDE (PAM) APPLICATION, OBTAIN A SOIL SAMPLE FROM PROJECT LOCATION, AND FROM OFFSITE MATERIAL, AND ANALYZE FOR APPROPRIATE PAM FLOCCULANT TO BE APPLIED TO EACH WATTLE.
 - INITIALLY APPLY 2 OUNCES OF ANIONIC OR NEUTRALLY CHARGED PAM OVER WATTLE WHERE WATER WILL FLOW AND 1 OUNCE OF PAM ON MATTING ON EACH SIDE OF WATTLE. REAPPLY PAM AFTER EVERY RAINFALL EVENT THAT IS EQUAL TO OR EXCEEDS 0.50 IN.



TOP VIEW

PROJECT REFERENCE NO. B-5548	SHEET NO. EC-2B
RW SHEET NO.	
ROADWAY DESIGN ENGINEER	HYDRAULICS ENGINEER

TEMPORARY ROCK SILT CHECK TYPE 'A' WITH EXCELSIOR MATTING AND POLYACRYLAMIDE (PAM)



PLAN

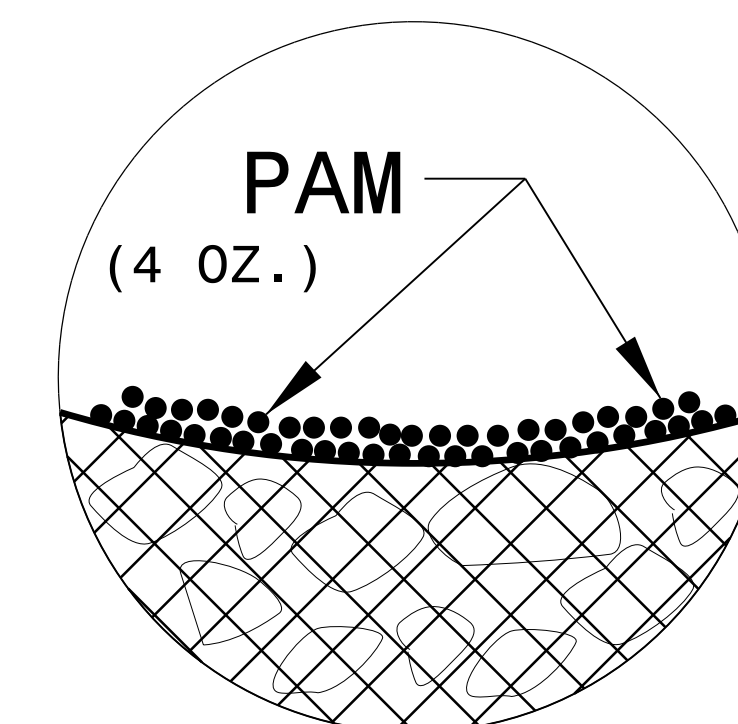
NOTES:

INSTALL TEMPORARY ROCK SILT CHECK TYPE A IN ACCORDANCE WITH ROADWAY STANDARD DRAWING NO. 1633.01.

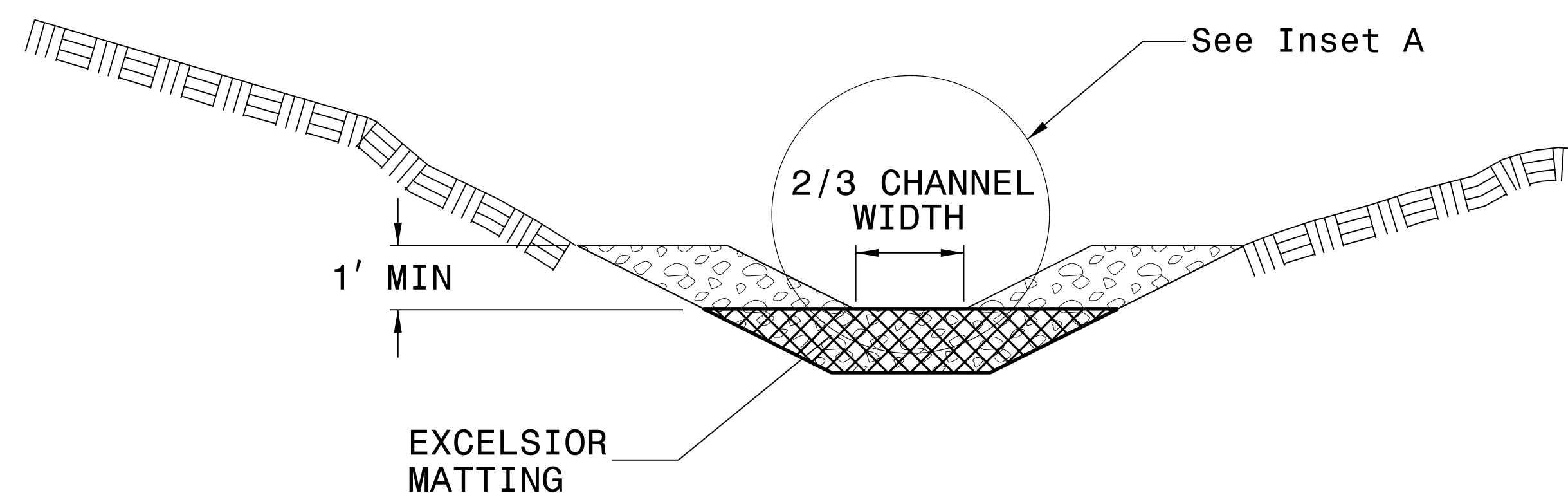
USE EXCELSIOR FOR MATTING MATERIAL AND ANCHOR MATTING SECTION AT TOP AND BOTTOM WITH CLASS B STONE.

PRIOR TO POLYACRYLAMIDE (PAM) APPLICATION, OBTAIN A SOIL SAMPLE FROM PROJECT LOCATION, AND FROM OFFSITE MATERIAL, AND ANALYZE FOR APPROPRIATE PAM FLOCCULANT TO BE APPLIED TO EACH ROCK SILT CHECK.

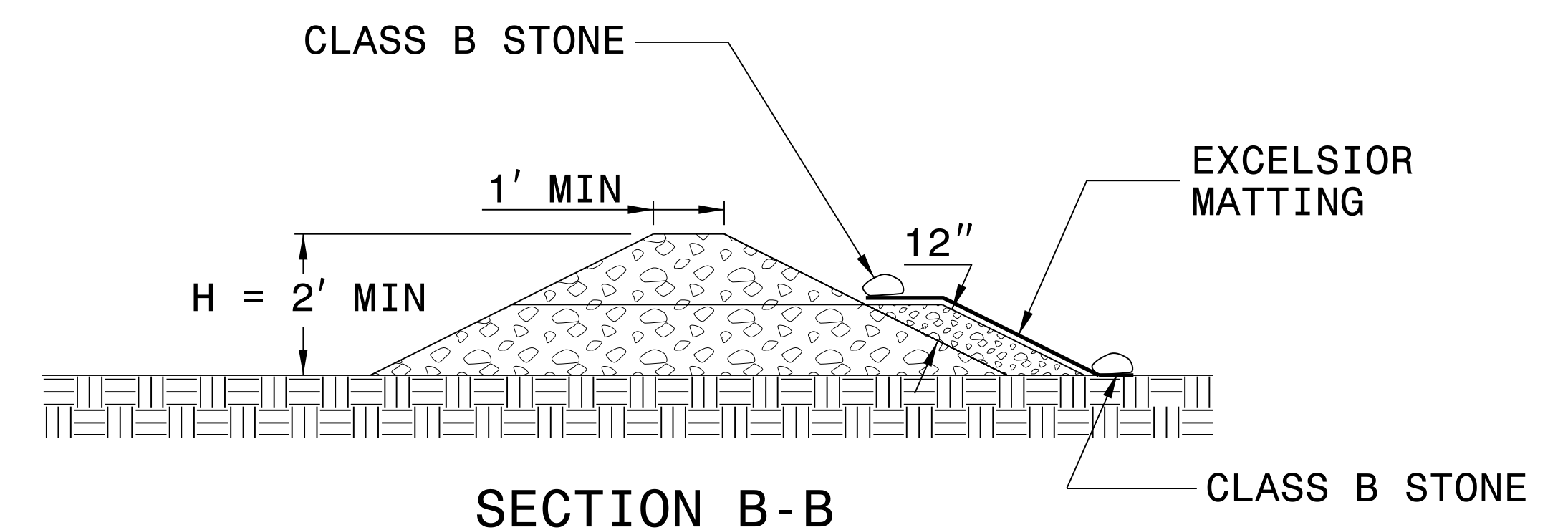
INITIALLY APPLY 4 OUNCES OF POLYACRYLAMIDE (PAM) TO TOP OF MATTING SECTION AND AFTER EVERY RAINFALL EVENT THAT EQUALS OR EXCEEDS 0.50 INCHES.



INSET A



SECTION A-A



SECTION B-B

NOT TO SCALE

DIVISION OF HIGHWAYS
STATE OF NORTH CAROLINA

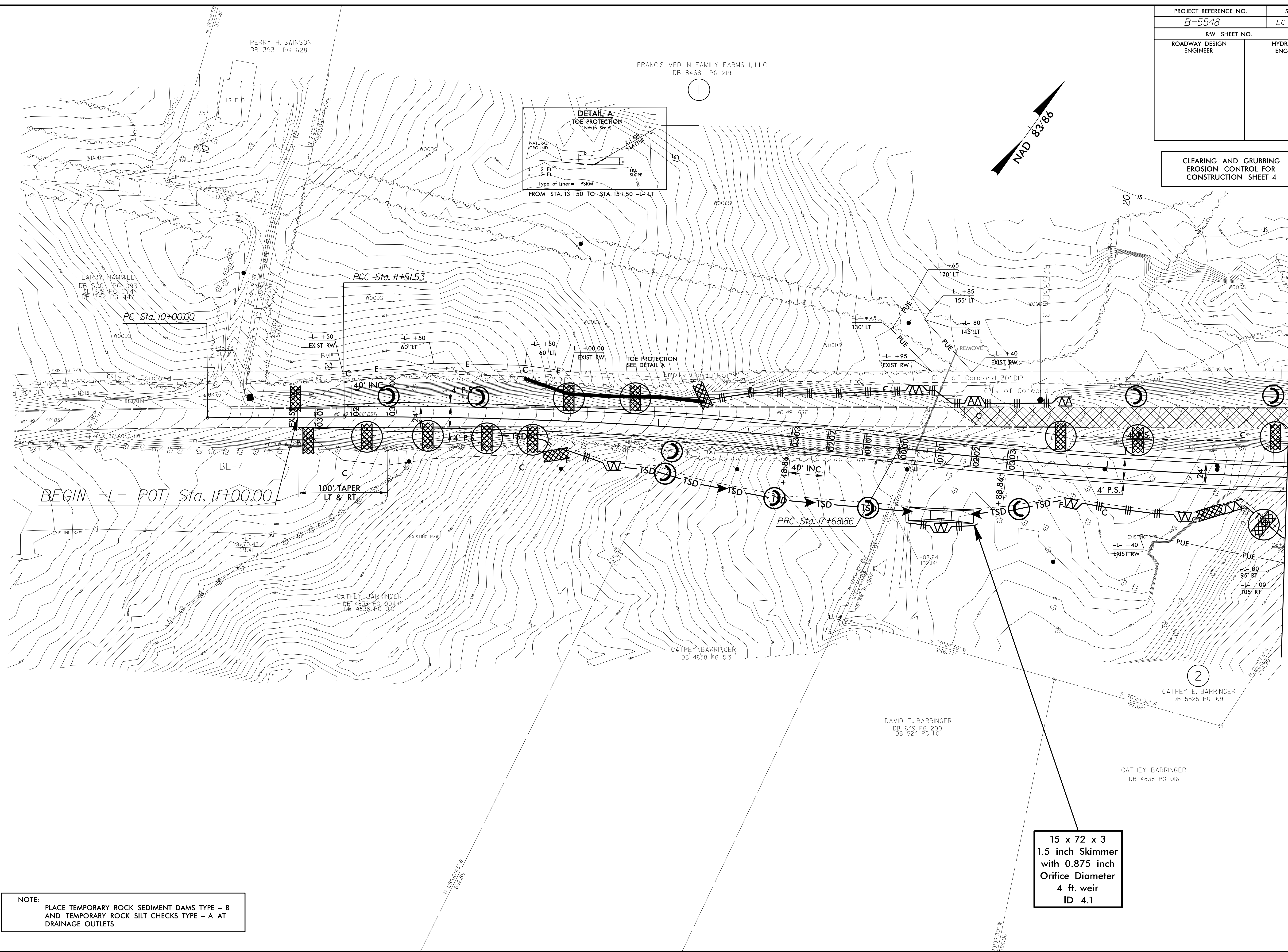
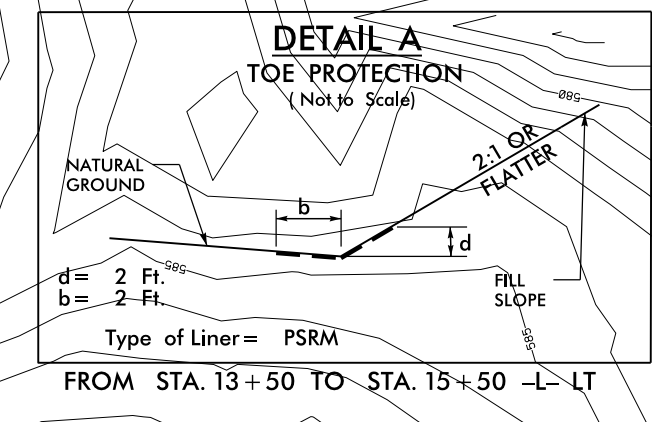
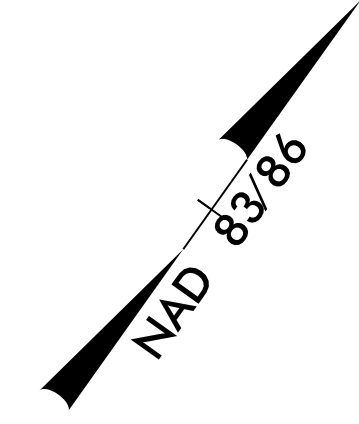
PROJECT REFERENCE NO. <i>B-5548</i>	SHEET NO. <i>EC-3</i>
ROADWAY DESIGN ENGINEER	HYDRAULICS ENGINEER

SOIL STABILIZATION TIMEFRAMES

<i>SITE DESCRIPTION</i>	<i>STABILIZATION TIME</i>	<i>TIMEFRAME EXCEPTIONS</i>
PERIMETER DIKES, SWALES, DITCHES AND SLOPES	7 DAYS	NONE
HIGH QUALITY WATER (HQW) ZONES	7 DAYS	NONE
SLOPES STEEPER THAN 3:1	7 DAYS	IF SLOPES ARE 10' OR LESS IN LENGTH AND ARE NOT STEEPER THAN 2:1, 14 DAYS ARE ALLOWED.
SLOPES 3:1 OR FLATTER	14 DAYS	7 DAYS FOR SLOPES GREATER THAN 50' IN LENGTH.
ALL OTHER AREAS WITH SLOPES FLATTER THAN 4:1	14 DAYS	NONE, EXCEPT FOR PERIMETERS AND HQW ZONES.

PROJECT REFERENCE NO. B-5548	SHEET NO. EC-4/CONST.4
RW SHEET NO.	
ROADWAY DESIGN ENGINEER	HYDRAULICS ENGINEER

CLEARING AND GRUBBING
EROSION CONTROL FOR
CONSTRUCTION SHEET 4



MATCHLINE SEE SHEET 5 -L- STA. 22 + 00.00

NOTE:
PLACE TEMPORARY ROCK SEDIMENT DAMS TYPE - B
AND TEMPORARY ROCK SILT CHECKS TYPE - A AT
DRAINAGE OUTLETS.

15 x 72 x 3
1.5 inch Skimmer
with 0.875 inch
Orifice Diameter
4 ft. weir
ID 4.1

8/17/99

26 SEP 2016 11:00 AM C:\Users\psh_4\dgn\B-5548_EC_psh_4.dgn

PERRY H. SWINSON
DB 393 PG 628

FRANCIS MEDLIN FAMILY FARMS I, LLC
DB 8468 PG 219

LARRY HAMMILL
DB 500 PG 093
DB 168 PG 014
DB 182 PG 447

CATHEY BARRINGER
DB 4838 PG 004
DB 4838 PG 010

CATHEY BARRINGER
DB 4838 PG 013

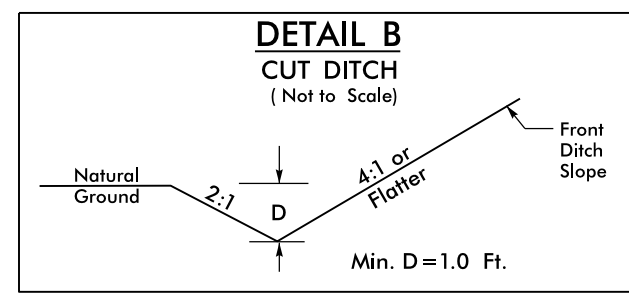
DAVID T. BARRINGER
DB 649 PG 200
DB 524 PG 110

CATHEY BARRINGER
DB 4838 PG 016

CATHEY E. BARRINGER
DB 5525 PG 169

PROJECT REFERENCE NO. B-5548	SHEET NO. EC-5/CONST.5
RW SHEET NO.	
ROADWAY DESIGN ENGINEER	HYDRAULICS ENGINEER

CLEARING AND GRUBBING
EROSION CONTROL FOR
CONSTRUCTION SHEET 5



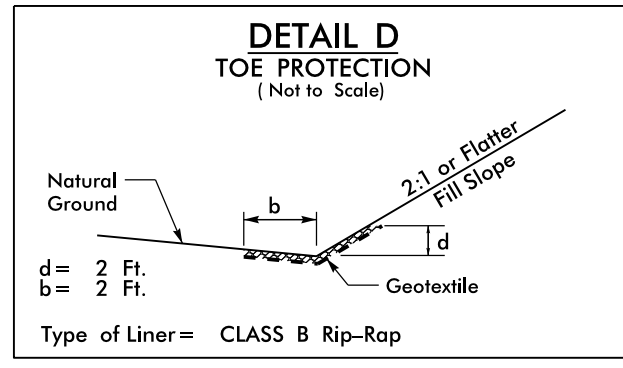
FROM STA. 22+75 TO STA. 23+25 -L- (LT)
FROM STA. 26+00 TO STA. 28+50 -L- (LT)
FROM STA. 35+50 TO STA. 37+50 -L- (RT)

FRANCIS MEDLIN FAMILY FARMS I, LLC
DB 8468 PG 219

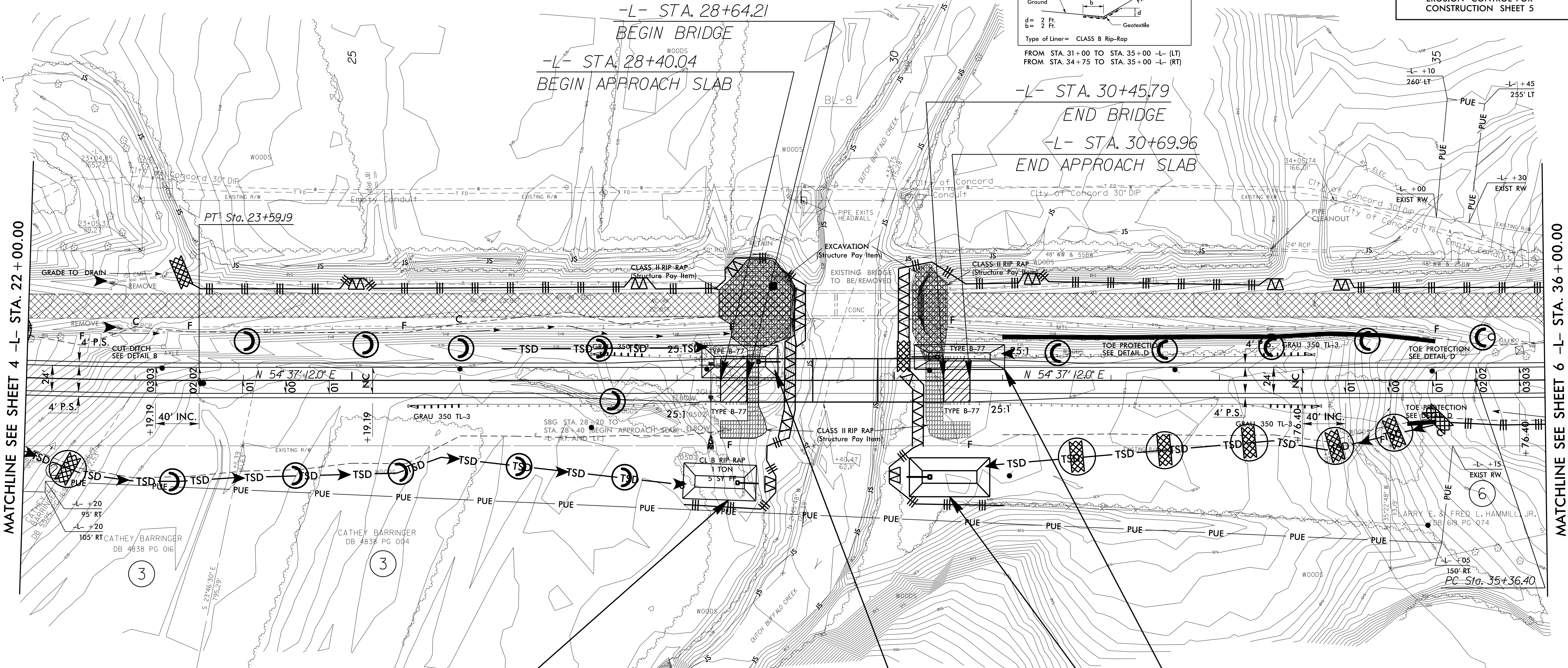
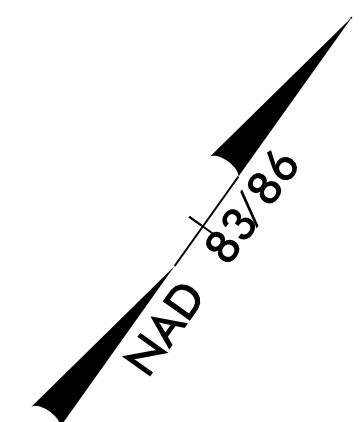
1

ERNEST Y CHOW
DB 1146 PG 096

5



Type of Liner = CLASS B Rip-Rap
FROM STA. 31+00 TO STA. 35+00 -L- (LT)
FROM STA. 34+75 TO STA. 35+00 -L- (RT)



MATCHLINE SEE SHEET 4 -L- STA. 22 + 00.00

MATCHLINE SEE SHEET 6 -L- STA. 36 + 00.00

105' RT CATHEY BARRINGER
DB 4838 PG 016

3

67 x 33 x 3
1.5 inch Skimmer
with 1.25 inch
Orifice Diameter
8 ft. weir
ID 5.1

70 x 30 x 3
1.5 inch Skimmer
with 1.25 inch
Orifice Diameter
8 ft. weir
ID 5.3

83 x 23 x 3
1.5 inch Skimmer
with 1.25 inch
Orifice Diameter
7 ft. weir
ID 5.4

74 x 36 x 3
1.5 inch Skimmer
with 1.5 inch
Orifice Diameter
10 ft. weir
ID 5.2

NOTE:
PLACE TEMPORARY ROCK SEDIMENT DAMS TYPE - B
AND TEMPORARY ROCK SILT CHECKS TYPE - A AT
DRAINAGE OUTLETS.

NOTE:
UTILIZE TEMPORARY SEDIMENT BASIN OR SPECIAL STILLING
BASIN(S) AS STILLING BASIN WHERE APPLICABLE.

FRED LEO HAMMILL, JR.
DB 460 PG 092

4

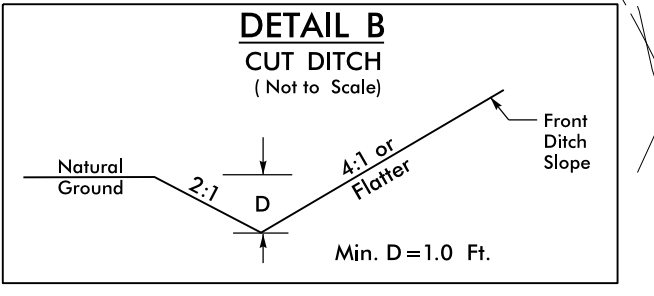
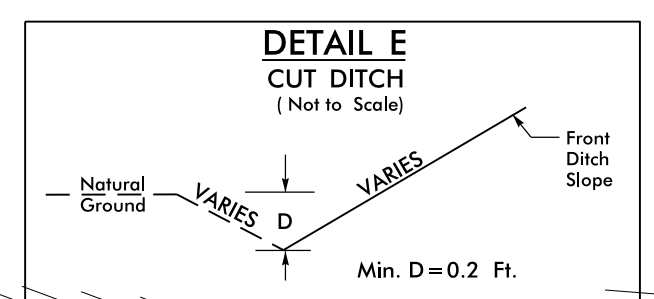
8/17/99

26 SEP 2016 11:08
C:\Users\jchow\Documents\B-5548_EC_psh_5.dgn

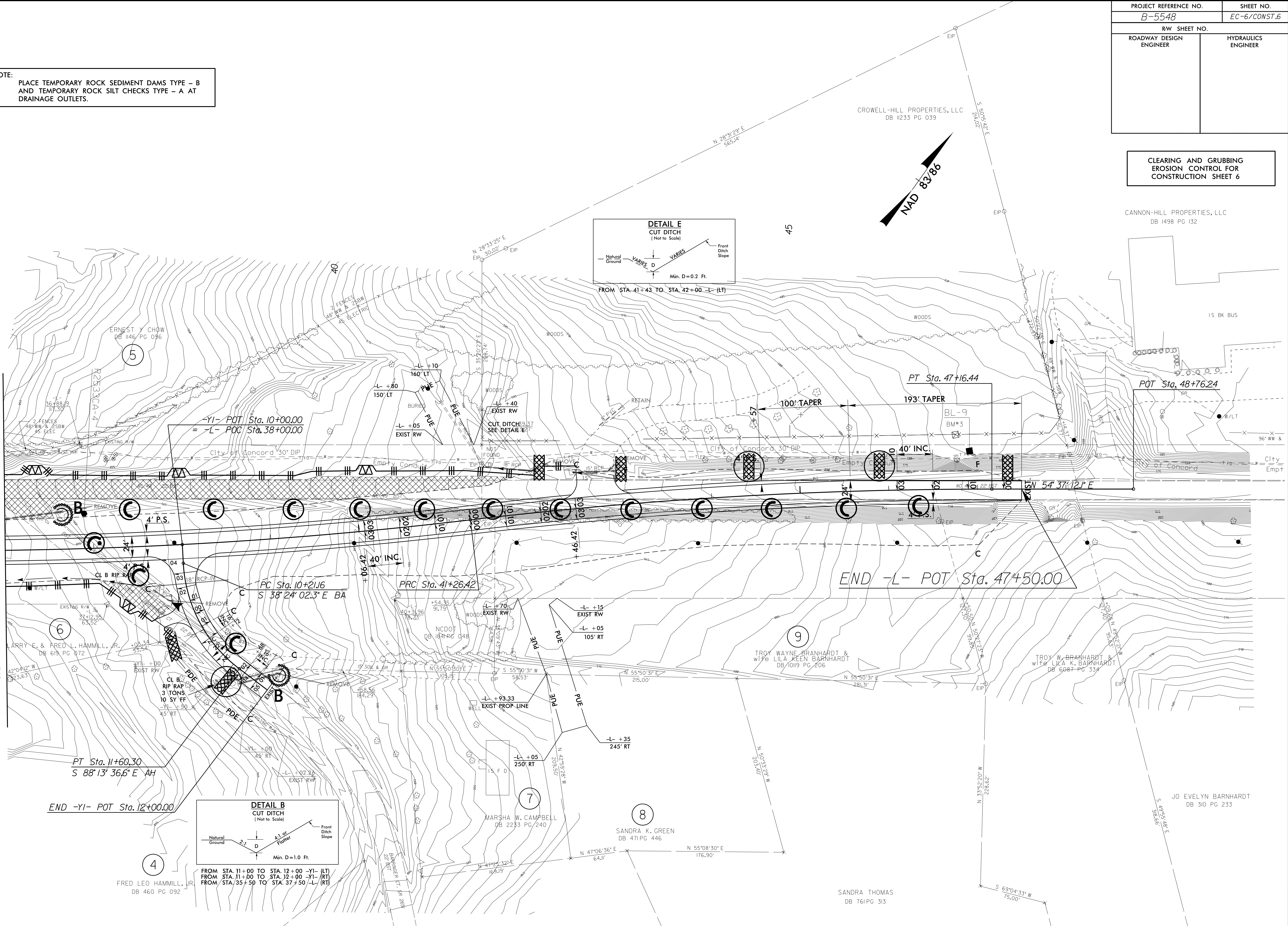
PROJECT REFERENCE NO. B-5548	SHEET NO. EC-6/CONST.6
RW SHEET NO.	
ROADWAY DESIGN ENGINEER	HYDRAULICS ENGINEER

CLEARING AND GRUBBING
EROSION CONTROL FOR
CONSTRUCTION SHEET 6

NOTE:
PLACE TEMPORARY ROCK SEDIMENT DAMS TYPE - B
AND TEMPORARY ROCK SILT CHECKS TYPE - A AT
DRAINAGE OUTLETS.



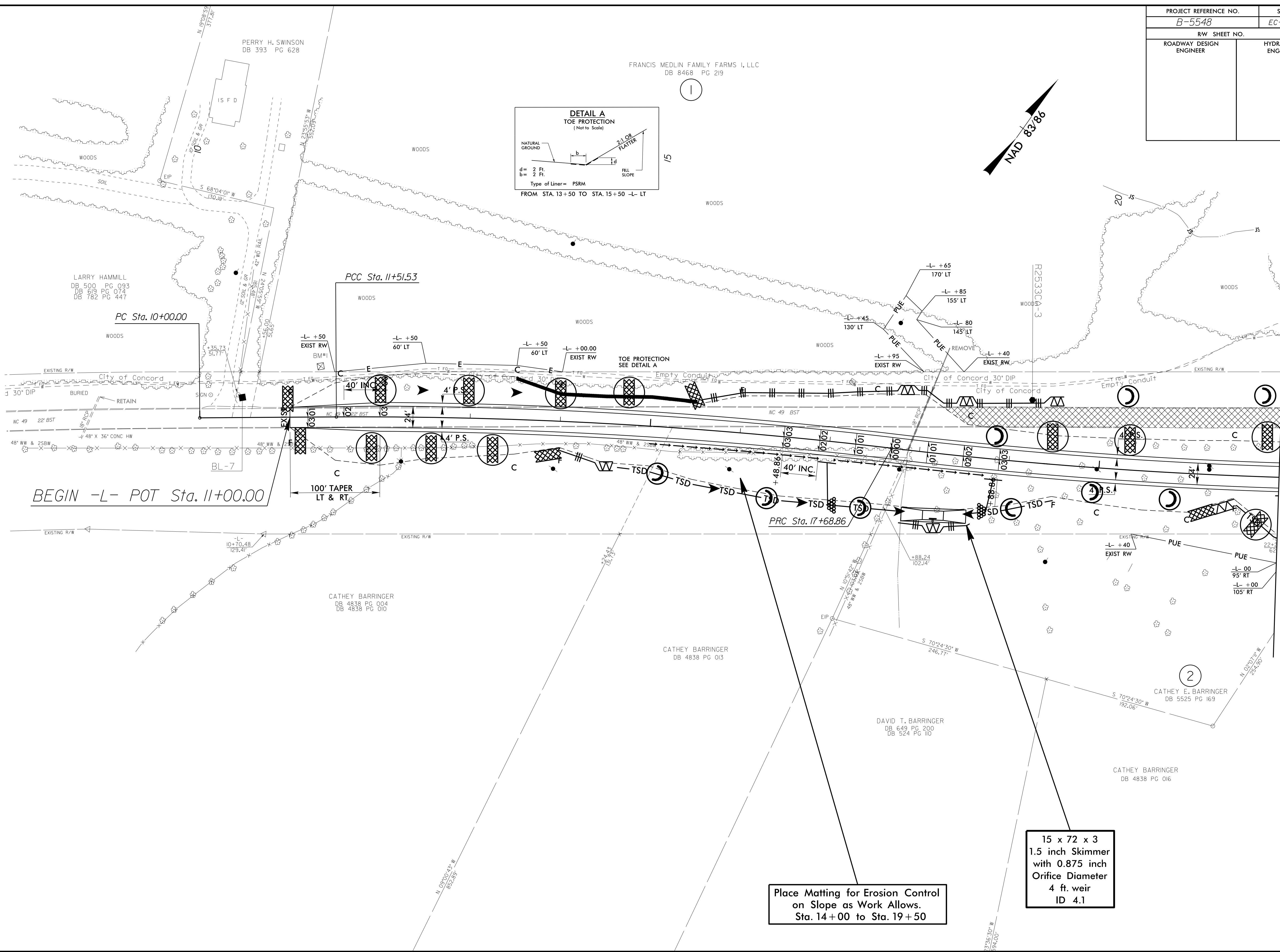
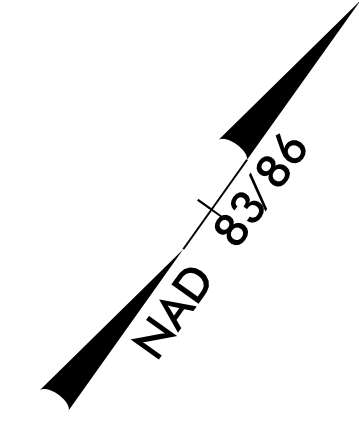
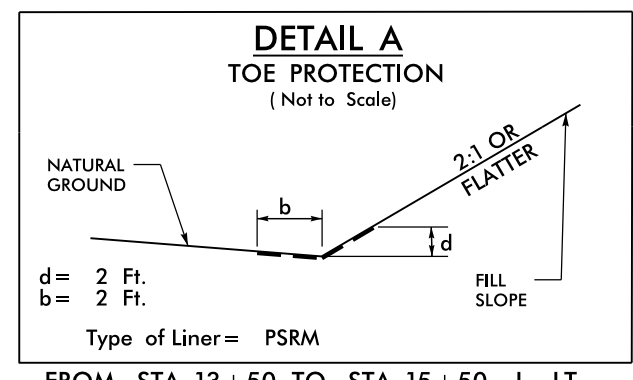
MATCHLINE SEE SHEET 5 -L- STA. 36+00.00



8/17/99

26-SEP-2016 11:34 \\Desktop\B-5548-EC_psh_6.dgn
C:\Users\jhamill\Documents\B-5548-EC_psh_6.dgn

PROJECT REFERENCE NO. B-5548	SHEET NO. EC-7/CONST.4
RW SHEET NO.	
ROADWAY DESIGN ENGINEER	HYDRAULICS ENGINEER



BEGIN -L- POT Sta. 11+00.00

MATCHLINE SEE SHEET 5 -L- STA. 22 + 00.00

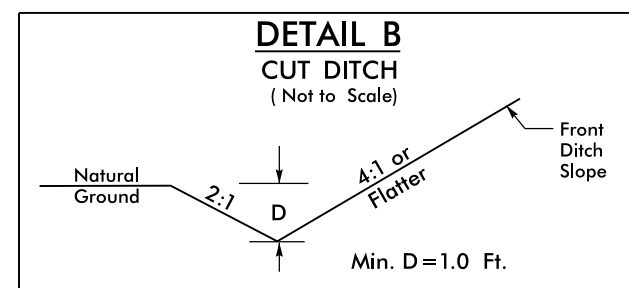
Place Matting for Erosion Control on Slope as Work Allows. Sta. 14+00 to Sta. 19+50

15 x 72 x 3
1.5 inch Skimmer with 0.875 inch Orifice Diameter
4 ft. weir
ID 4.1

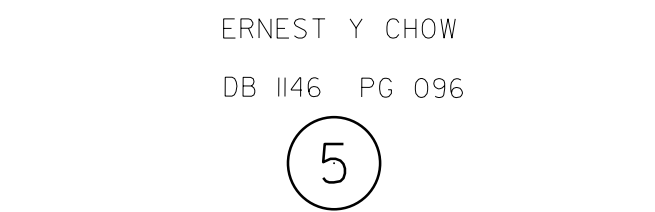
8/17/99

26 SEP 2016 10:55
C:\Users\psh-4\dgn
B-5548-EC-7-269783.dgn

PROJECT REFERENCE NO. B-5548	SHEET NO. EC-8/CONST.5
RW SHEET NO.	
ROADWAY DESIGN ENGINEER	HYDRAULICS ENGINEER



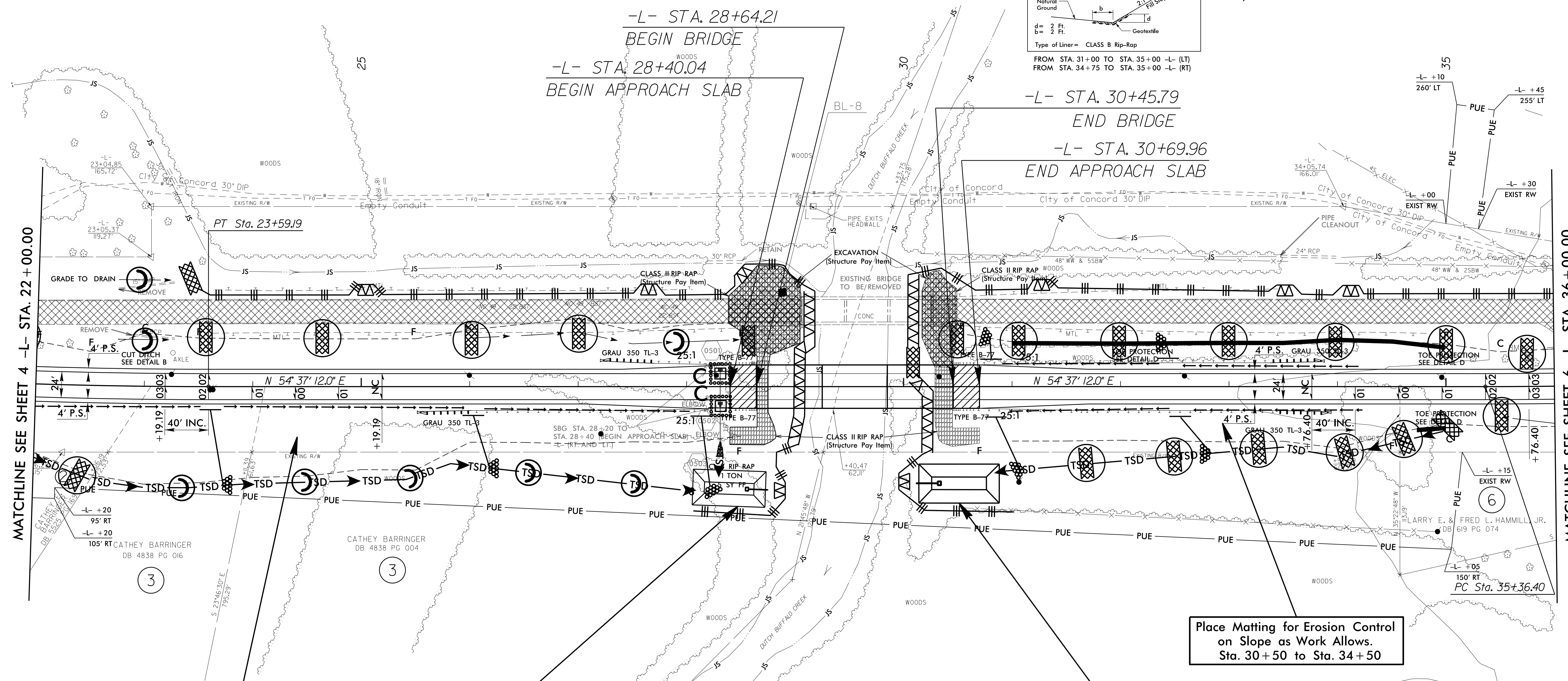
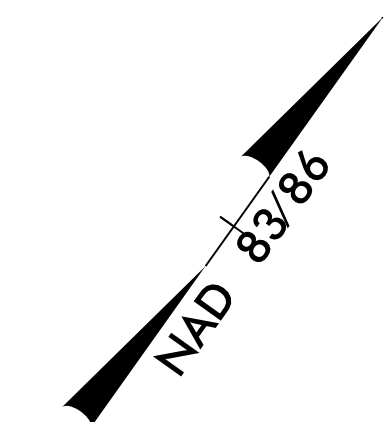
FROM STA. 22+75 TO STA. 23+25 -L- (LT)
 FROM STA. 24+00 TO STA. 28+50 -L- (LT)
 FROM STA. 35+50 TO STA. 37+50 -L- (RT)



FROM STA. 31+00 TO STA. 35+00 -L- (LT)
 FROM STA. 34+75 TO STA. 35+00 -L- (RT)

FRANCIS MEDLIN FAMILY FARMS I, LLC
 DB 8468 PG 219

ERNEST Y CHOW
 DB 1146 PG 096



MATCHLINE SEE SHEET 4 -L- STA. 22+00.00

MATCHLINE SEE SHEET 6 -L- STA. 36+00.00

Place Matting for Erosion Control
 on Slope as Work Allows.
 Sta. 22+00 to Sta. 28+00

67 x 33 x 3
 1.5 inch Skimmer
 with 1.25 inch
 Orifice Diameter
 8 ft. weir
 ID 5.1

74 x 36 x 3
 1.5 inch Skimmer
 with 1.5 inch
 Orifice Diameter
 10 ft. weir
 ID 5.2

Place Matting for Erosion Control
 on Slope as Work Allows.
 Sta. 30+50 to Sta. 34+50

NOTE:
 UTILIZE TEMPORARY SEDIMENT BASIN OR SPECIAL STILLING
 BASIN(S) AS STILLING BASIN WHERE APPLICABLE.

8/17/99
 26-SEP-2016 11:17
 C:\p1\proj\1\Design\B-5548_EC.psh_5.dgn
 CA
 269783

