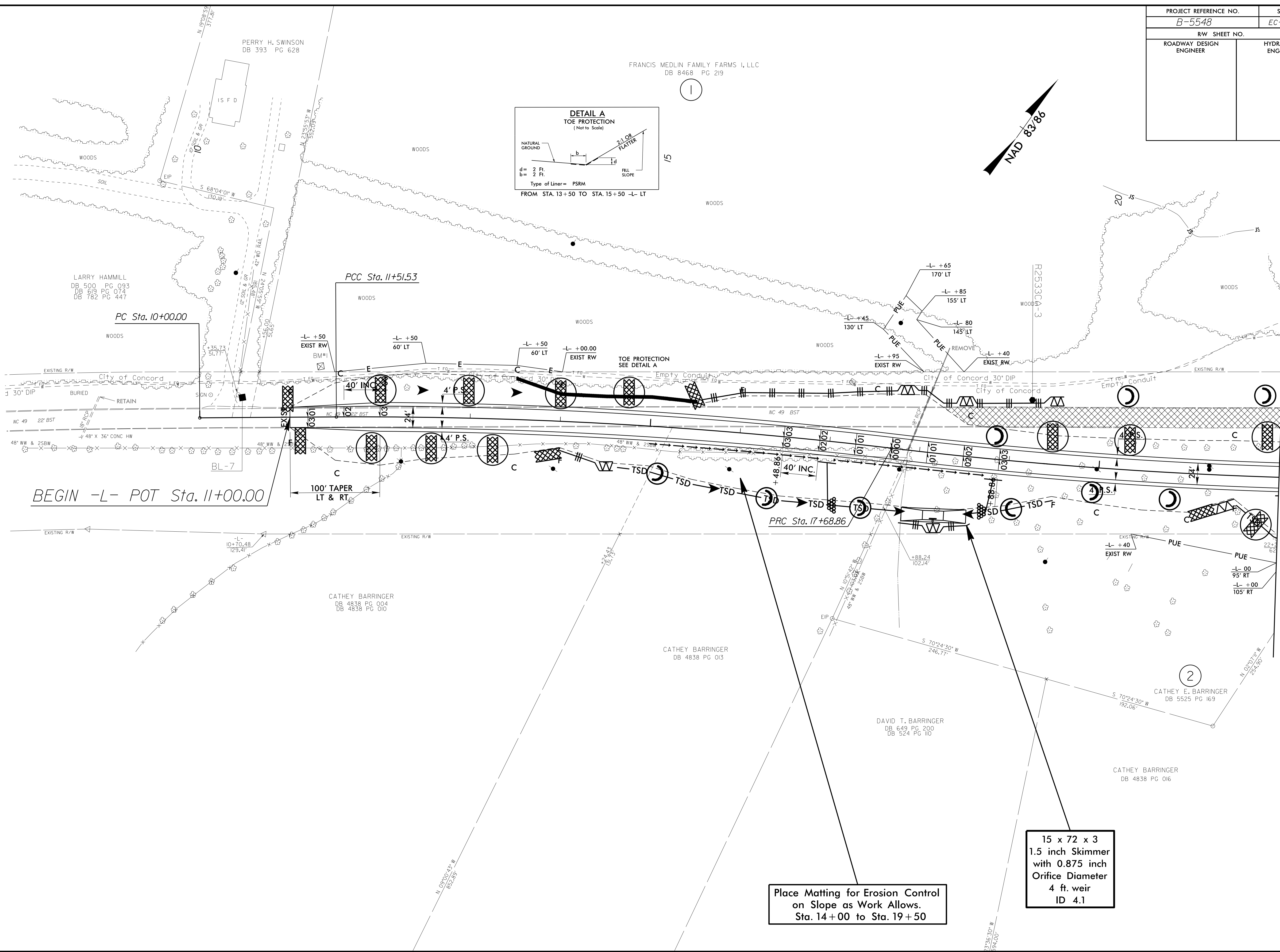
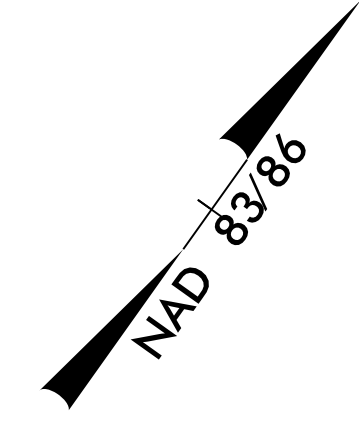
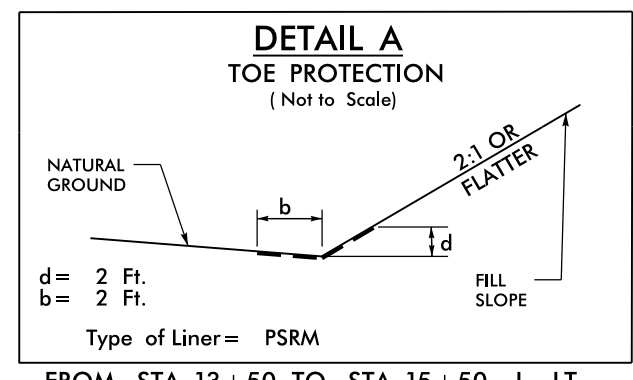


PROJECT REFERENCE NO. B-5548	SHEET NO. EC-7/CONST.4
RW SHEET NO.	
ROADWAY DESIGN ENGINEER	HYDRAULICS ENGINEER



BEGIN -L- POT Sta. 11+00.00

MATCHLINE SEE SHEET 5 -L- STA. 22+00.00

Place Matting for Erosion Control
on Slope as Work Allows.
Sta. 14+00 to Sta. 19+50

15 x 72 x 3
1.5 inch Skimmer
with 0.875 inch
Orifice Diameter
4 ft. weir
ID 4.1

8/17/99

26 SEP 2016 10:55
C:\Users\psh\OneDrive\Documents\B-5548_EC-ps-h_4.dgn

LARRY HAMMILL
DB 500 PG 093
DB 619 PG 074
DB 782 PG 447

PERRY H. SWINSON
DB 393 PG 628

FRANCIS MEDLIN FAMILY FARMS I, LLC
DB 8468 PG 219

PCC Sta. 11+51.53

PC Sta. 10+00.00

PRC Sta. 17+68.86

CATHEY BARRINGER
DB 4838 PG 004
DB 4838 PG 010

CATHEY BARRINGER
DB 4838 PG 013

DAVID T. BARRINGER
DB 649 PG 200
DB 524 PG 110

CATHEY E. BARRINGER
DB 5525 PG 169

CATHEY BARRINGER
DB 4838 PG 016