

**This electronic collection of documents is provided
for the convenience of the user
and is Not a Certified Document –**

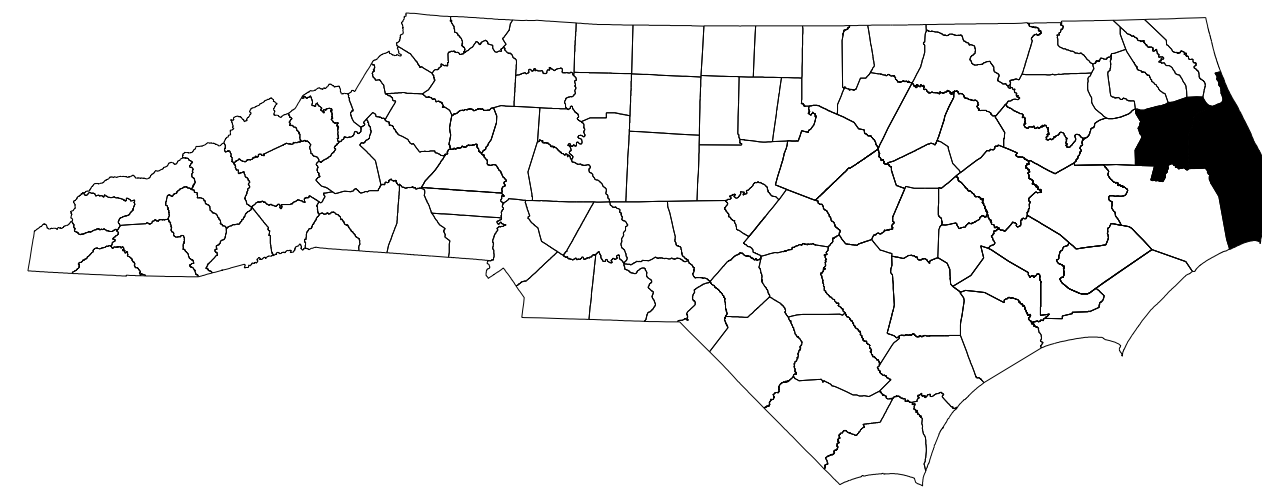
**The documents contained herein were originally issued
and sealed by the individuals whose names and license
numbers appear on each page, on the dates appearing
with their signature on that page.**

**This file or an individual page
shall not be considered a certified document.**

STATE OF NORTH CAROLINA
DIVISION OF HIGHWAYS

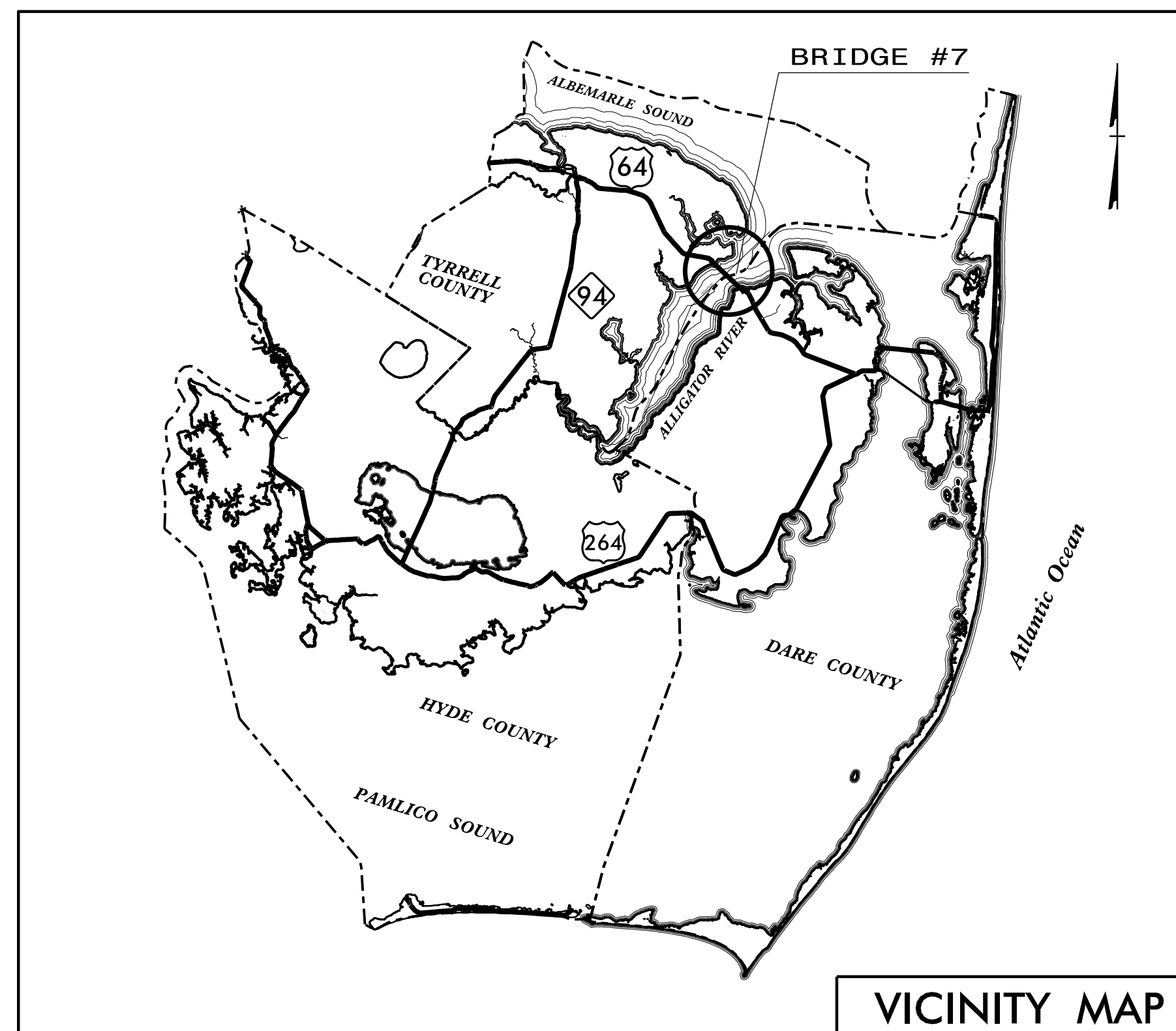
TRANSPORTATION MANAGEMENT PLAN

TYRRELL & DARE COUNTIES



BRIDGE #7 – US 64 OVER ALLIGATOR RIVER

REPAIRS TO SWING SPAN, BRIDGE DECK, AND SUBSTRUCTURE



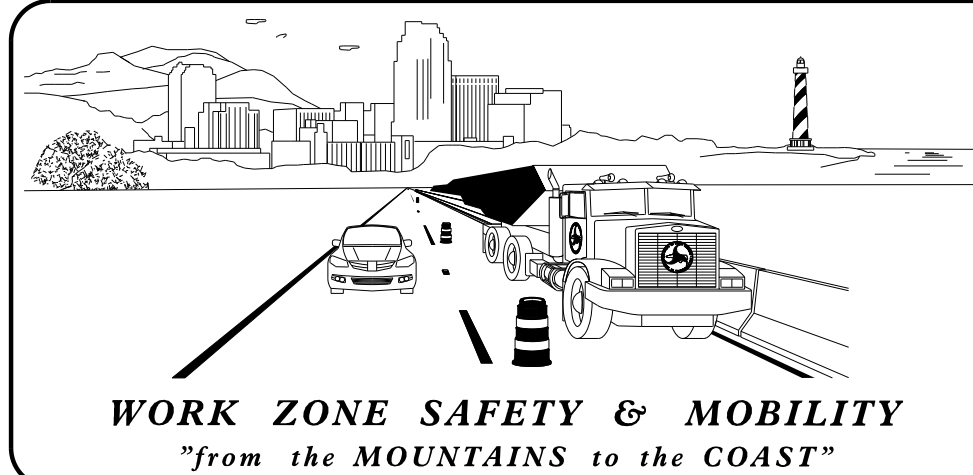
VICINITY MAP

INDEX OF SHEETS

SHEET NO.	TITLE
TMP-1	TITLE SHEET, VICINITY MAP, AND INDEX OF SHEETS
TMP-1A	LIST OF APPLICABLE ROADWAY STANDARD DRAWINGS, AND LEGEND
TMP-1B	TRANSPORTATION OPERATIONS PLAN: (MANAGEMENT STRATEGY, GENERAL NOTES, AND PHASING)
TMP-2	US 64/NC 94 DETOUR POINT
TMP-3	US 64 ROAD CLOSURE - WESTERN END OF BRIDGE
TMP-4	US 64 ROAD CLOSURE - EASTERN END OF BRIDGE
TMP-5	US 64/US 264 DETOUR POINT
TMP-6	OFF-SITE DETOUR ROUTE AND SIGNING

SHEET NO.
TMP-1

9/14/2016 L:\Traffic\Transportation Management\Plan\TMP\TyrrellCounty Bridge 7\TMP\Bridge Rehab Project 02-2016\Plan Sheets\ISP\0891.6_TC_TMP_01_TITLE.dgn

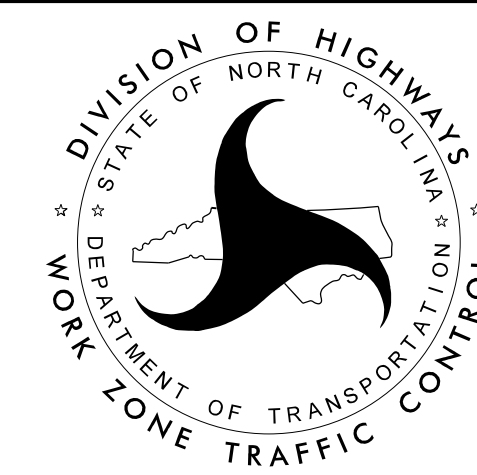


N.C.D.O.T. WORK ZONE TRAFFIC CONTROL
1561 MAIL SERVICE CENTER (MSC) RALEIGH, NC 27699-1561
750 N. GREENFIELD PARKWAY, GARNER, NC 27529 (DELIVERY)
PHONE: (919) 773-2800 FAX: (919) 771-2745

J. S. KITE, PE **EASTERN WORK ZONE TRAFFIC CONTROL ENGINEER**

DON A. PARKER, PE **TRAFFIC CONTROL PROJECT DESIGN ENGINEER**

TRAFFIC CONTROL DESIGN ENGINEER



Stantec
Stantec Consulting Services Inc. Tel. 919.851.6866
801 Jones Franklin Rd-Suite 300 Fax. 919.851.7024
Raleigh, NC 27606 www.stantec.com
License No. F-0672

BETSY L. WATSON, PE
SENIOR TRANSPORTATION ENGINEER

DEAN HARRIS
SENIOR TRANSPORTATION DESIGNER

APPROVED: Betsy L. Watson
DATE: 9/14/2016

SEAL
NORTH CAROLINA PROFESSIONAL ENGINEER SEAL 29449
BETSY L. WATSON

TIP PROJECT: B-5936

ROADWAY STANDARD DRAWINGS

THE FOLLOWING ROADWAY STANDARDS AS SHOWN IN "ROADWAY STANDARD DRAWINGS" - PROJECT SERVICES UNIT - N.C. DEPARTMENT OF TRANSPORTATION - RALEIGH, N.C., DATED JANUARY 2012 ARE APPLICABLE TO THIS PROJECT AND BY REFERENCE HEREBY ARE CONSIDERED A PART OF THESE PLANS:

STD. NO.	TITLE
1101.01	WORK ZONE ADVANCE WARNING SIGNS
1101.02	TEMPORARY LANE CLOSURES
1101.03	TEMPORARY ROAD CLOSURES
1101.04	TEMPORARY SHOULDER CLOSURES
1101.11	TRAFFIC CONTROL DESIGN TABLES
1110.01	STATIONARY WORK ZONE SIGNS
1110.02	PORTABLE WORK ZONE SIGNS
1115.01	FLASHING ARROW BOARDS
1130.01	DRUM
1135.01	CONES
1145.01	BARRICADES
1150.01	FLAGGING DEVICES
1165.01	WORK VEHICLE LIGHTING SYSTEMS AND TMA DELINEATION
1180.01	SKINNY-DRUM
1205.01	PAVEMENT MARKINGS - LINE TYPES AND OFFSETS
1205.02	PAVEMENT MARKINGS - TWO-LANE AND MULTI-LANE ROADWAYS
1205.12	PAVEMENT MARKINGS - BRIDGES
1250.01	RAISED PAVEMENT MARKERS - INSTALLATION SPACING
1251.01	RAISED PAVEMENT MARKERS - PERMANENT AND TEMPORARY

LEGEND

GENERAL

- DIRECTION OF TRAFFIC FLOW
- DIRECTION OF PEDESTRIAN TRAFFIC FLOW
- EXIST. PVMT.
- NORTH ARROW
- PROPOSED PVMT.
- TEMP. SHORING (LOCATION PURPOSES ONLY)



SIGNALS

- EXISTING
- PROPOSED
- TEMPORARY

PAVEMENT MARKINGS

- EXISTING LINES
- TEMPORARY LINES

TRAFFIC CONTROL DEVICES

- BARRICADE (TYPE III)
- CONE
- DRUM
- SKINNY DRUM
- TUBULAR MARKER
- TEMPORARY CRASH CUSHION
- FLASHING ARROW BOARD
- FLAGGER
- LAW ENFORCEMENT
- TRUCK MOUNTED ATTENUATOR (TMA)
- CHANGEABLE MESSAGE SIGN

TEMPORARY SIGNING

- PORTABLE SIGN
- STATIONARY SIGN
- STATIONARY OR PORTABLE SIGN

PAVEMENT MARKERS

- CRYSTAL/CRYSTAL
- CRYSTAL/RED
- YELLOW/YELLOW

PAVEMENT MARKING SYMBOLS

- PAVEMENT MARKING SYMBOLS

7/27/2016
L:\Traffic\Transportation Management\Plan\TMP\Terrell County Bridge 7\TMP\Bridge Rehab Project 02-2016\Plan Sheets\ISP\08916_TC_TMP_IA_RDWYSTDSLEGEND.dgn
jhambricht



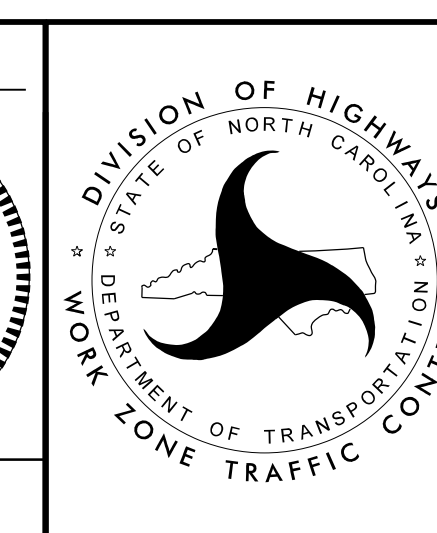
Stantec Consulting Services Inc.
801 Jones Franklin Road
Suite 300
Raleigh, NC 27606
Tel. (919) 851-6866
Fax. (919) 851-7024
www.stantec.com
License No. F-0672

APPROVED:

DATE: 7/27/2016

SEAL

**DOCUMENT NOT CONSIDERED FINAL
UNLESS ALL SIGNATURES COMPLETED**



ROADWAY STANDARD
DRAWINGS & LEGEND

GENERAL NOTES

THE FOLLOWING GENERAL NOTES APPLY AT ALL TIMES FOR THE DURATION OF THE PROJECT EXCEPT WHEN OTHERWISE NOTED IN THE PLAN OR DIRECTED BY THE ENGINEER.

CHANGES MAY BE REQUIRED WHEN PHYSICAL DIMENSIONS IN THE DETAIL DRAWINGS, STANDARD DETAILS, AND ROADWAY DETAILS ARE NOT ATTAINABLE TO MEET FIELD CONDITIONS OR RESULT IN DUPLICATE OR UNDESIRED OVERLAPPING OF DEVICES. MODIFICATION MAY INCLUDE: MOVING, SUPPLEMENTING, COVERING, OR REMOVAL OF DEVICES AS DIRECTED BY THE ENGINEER.

TIME RESTRICTIONS

A) DO NOT CLOSE OR NARROW TRAVEL LANES AS FOLLOWS:

ROAD NAME	DAY AND TIME RESTRICTIONS
US 64	MAY 1 THROUGH SEPTEMBER 30: FRIDAY AT 6:00 AM THROUGH SUNDAY AT 9:00 PM. NO RESTRICTIONS ARE IMPOSED FROM OCTOBER 1 THROUGH APRIL 30.

B) DO NOT CLOSE OR NARROW TRAVEL LANES DURING HOLIDAYS AND SPECIAL EVENTS AS FOLLOWS:

HOLIDAY

- FOR ANY UNEXPECTED OCCURRENCE THAT CREATES UNUSUALLY HIGH TRAFFIC VOLUMES, AS DIRECTED BY THE ENGINEER.
- FOR NEW YEAR'S, BETWEEN THE HOURS OF 6:00 A.M. DECEMBER 31ST TO 9:00 P.M. JANUARY 2ND. IF NEW YEAR'S DAY IS ON A FRIDAY, SATURDAY, SUNDAY, OR MONDAY THEN UNTIL 9:00 P.M. THE FOLLOWING TUESDAY.
- FOR EASTER, BETWEEN THE HOURS OF 6:00 A.M. THURSDAY AND 9:00 P.M. MONDAY.
- FOR MEMORIAL DAY, BETWEEN THE HOURS OF 6:00 A.M. FRIDAY TO 9:00 P.M. TUESDAY.
- FOR INDEPENDENCE DAY, BETWEEN THE HOURS OF 6:00 A.M. THE DAY BEFORE INDEPENDENCE DAY AND 9:00 P.M. THE DAY AFTER INDEPENDENCE DAY.
IF INDEPENDENCE DAY IS ON A FRIDAY, SATURDAY, SUNDAY OR MONDAY; THEN BETWEEN THE HOURS OF 6:00 A.M. THE THURSDAY BEFORE INDEPENDENCE DAY AND 9:00 P.M. THE TUESDAY AFTER INDEPENDENCE DAY.
- FOR LABOR DAY, BETWEEN THE HOURS OF 6:00 A.M. FRIDAY AND 9:00 P.M. TUESDAY.
- FOR THANKSGIVING DAY, BETWEEN THE HOURS OF 6:00 A.M. TUESDAY TO 9:00 P.M. MONDAY.
- FOR CHRISTMAS, BETWEEN THE HOURS OF 6:00 A.M. THE FRIDAY BEFORE THE WEEK OF CHRISTMAS DAY AND 9:00 P.M. THE FOLLOWING TUESDAY AFTER THE WEEK OF CHRISTMAS DAY.

C) DO NOT CLOSE A ROADWAY OR DETOUR TRAFFIC AS FOLLOWS:

ROAD NAME	DAY AND TIME RESTRICTIONS
US 64	FROM MARCH 16 THROUGH JANUARY 2 OF THE FOLLOWING YEAR.

GENERAL NOTES (CONT.)

LANE CLOSURE AND SHOULDER REQUIREMENTS

- REMOVE THE LANE CLOSURE DEVICES FROM THE LANE WHEN WORK IS NOT BEING PERFORMED BEHIND THE LANE CLOSURE, OR WHEN A LANE CLOSURE IS NO LONGER NEEDED, OR AS DIRECTED BY THE ENGINEER.
- WHEN PERSONNEL AND/OR EQUIPMENT ARE WORKING WITHIN 15 FEET OF AN OPEN TRAVEL LANE, CLOSE THE NEAREST OPEN SHOULDER USING ROADWAY STANDARD DRAWING NO. 1101.04 UNLESS THE WORK AREA IS PROTECTED BY BARRIER, GUARDRAIL, OR A LANE CLOSURE IS INSTALLED.
- WHEN PERSONNEL AND/OR EQUIPMENT ARE WORKING ON THE SHOULDER ADJACENT TO AN UNDIVIDED FACILITY AND WITHIN 5 FEET OF AN OPEN TRAVEL LANE, CLOSE THE NEAREST OPEN TRAVEL LANE USING ROADWAY STANDARD DRAWING NO. 1101.02 UNLESS THE WORK AREA IS PROTECTED BY BARRIER OR GUARDRAIL.
- WHEN PERSONNEL AND/OR EQUIPMENT ARE WORKING WITHIN A LANE OF TRAVEL OF AN UNDIVIDED OR DIVIDED FACILITY, CLOSE THE LANE ACCORDING TO THE TRAFFIC CONTROL PLANS, ROADWAY STANDARD DRAWINGS, OR AS DIRECTED BY THE ENGINEER. CONDUCT THE WORK SO THAT ALL PERSONNEL AND/OR EQUIPMENT REMAIN WITHIN THE CLOSED TRAVEL LANE.
- DO NOT WORK SIMULTANEOUSLY WITHIN 15 FEET ON BOTH SIDES OF AN OPEN TRAVELWAY, RAMP, OR LOOP WITHIN THE SAME LOCATION UNLESS PROTECTED WITH GUARDRAIL OR BARRIER.

TRAFFIC PATTERN ALTERATIONS

- NOTIFY THE ENGINEER TWENTY-ONE (21) CALENDAR DAYS PRIOR TO ANY TRAFFIC PATTERN ALTERATION.

SIGNING

- INSTALL SIGNING AND DEVICES REQUIRED TO CLOSE THE ROAD ACCORDING TO THE ROADWAY STANDARD DRAWINGS AND TRAFFIC CONTROL PLANS.
- COVER OR REMOVE ALL SIGNS AND DEVICES REQUIRED TO CLOSE THE ROAD WHEN ROAD CLOSURE IS NOT IN OPERATION.

COVER OR REMOVE ALL SIGNS REQUIRED FOR THE OFF-SITE DETOUR WHEN THE DETOUR IS NOT IN OPERATION.
- ENSURE ALL NECESSARY SIGNING IS IN PLACE PRIOR TO ALTERING ANY TRAFFIC PATTERN.

TRAFFIC CONTROL DEVICES

- PLACE TYPE III BARRICADES WITH SIGN "ROAD CLOSED" SIGN R11-2 ATTACHED, OF SUFFICIENT LENGTH TO CLOSE ENTIRE ROADWAY.

PAVEMENT MARKING AND MARKERS

- UPON COMPLETION OF ALL OTHER CONSTRUCTION OPERATIONS, REPLACE EXISTING PAVEMENT MARKINGS ACCORDING TO ROADWAY STANDARD DRAWING 1205.02.

GENERAL NOTES (CONT.)

MISCELLANEOUS

- ALL DIMENSIONS AND STATIONS IN THE TRANSPORTATION MANAGEMENT PLAN AND PHASING ARE APPROXIMATE (+/-); FIELD ADJUST AS NECESSARY OR AS DIRECTED BY THE ENGINEER.
- ENSURE THE OVERSIZE/OVERWEIGHT PERMIT UNIT (919) 733-4740 HAS BEEN ADVISED OF THE ONGOING TRAFFIC OPERATIONS THROUGH THE DIVISION OFFICE.

PHASING

PERFORM ALL ELECTRICAL AND MECHANICAL REPAIRS FOR THE MOVEABLE PORTION OF BRIDGE #7 USING A ROAD CLOSURE WITH OFF-SITE DETOUR AS SHOWN ON SHEETS TMP 2-6. REFER TO PROJECT PROPOSAL FOR ALLOWABLE CLOSURE PERIOD(S).

USE FLAGGER CONTROLLED LANE CLOSURES TO PERFORM THE REMAINING DECK WORK AND PLACE FINAL PAVEMENT MARKINGS ON BRIDGE #7 ACCORDING TO ROADWAY STANDARD DRAWING 1101.02 (SHEET 1 OF 15).

USE FLAGGER CONTROLLED LANE CLOSURES ACCORDING TO ROADWAY STANDARD DRAWING 1101.02 (SHEET 1 OF 15) IF LANE CLOSURES ARE NECESSARY TO PERFORM ANY WORK BENEATH BRIDGE #7.

TRAFFIC MANAGEMENT STRATEGY

PROPOSED BRIDGE REPAIRS TO THE MOVEABLE PORTION OF BRIDGE #7 WILL BE PERFORMED USING A TIME RESTRICTED ROAD CLOSURE WITH OFFSITE DETOUR.

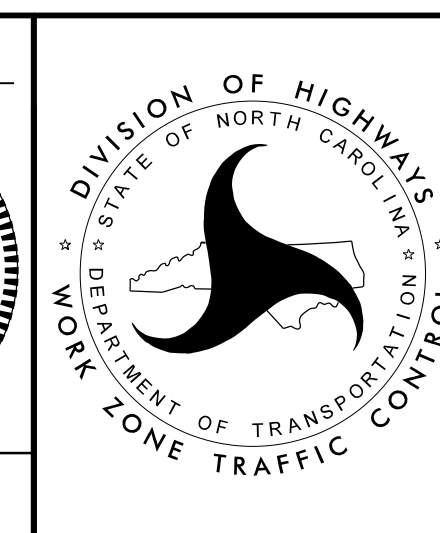
DECK REHABILITATION AND SUBSTRUCTURE MAINTENANCE TO THE REMAINING PORTION OF THE BRIDGE WILL BE PERFORMED USING FLAGGING OPERATIONS AND TEMPORARY LANE CLOSURES.

8/18/2016 UsTrafficTransportation Management Plan\TMP\Terrill County Bridge 7\TMP\Bridge Rehab Project 02-2016\Plan Sheets\SP\0891.6_TC_TMP_IB_GENERALNOTES_PHASING.dgn

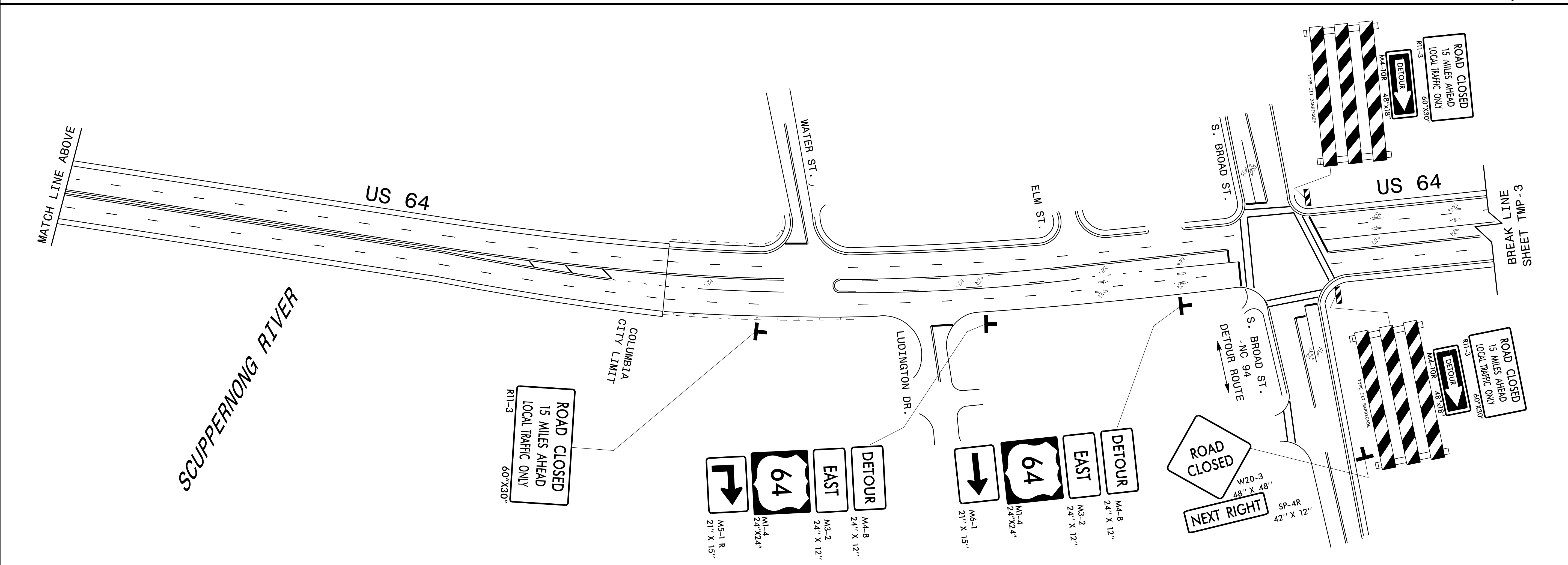
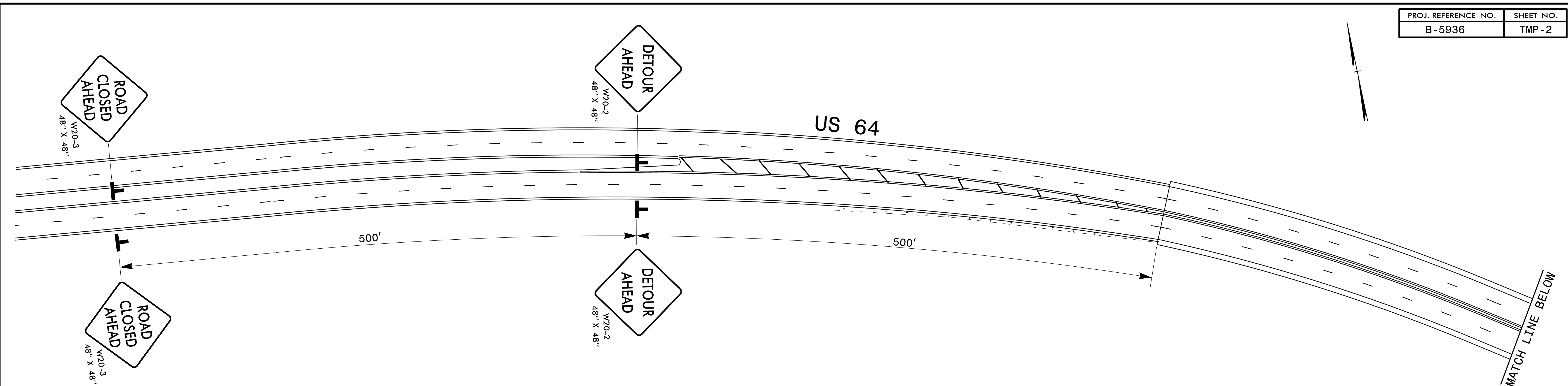


Stantec Consulting Services Inc.
801 Jones Franklin Road
Suite 300
Raleigh, NC 27606
Tel. (919) 851-6866
Fax. (919) 851-7024
www.stantec.com
License No. F-0672

APPROVED: <i>Betsy L. Watson</i> <small>35E078834F8743F...</small>
DATE: 8/19/2016
SEAL
DOCUMENT NOT CONSIDERED FINAL UNLESS ALL SIGNATURES COMPLETED



TRAFFIC MANAGEMENT STRATEGY, GENERAL NOTES & PHASING



7/27/2016 UsTrafficTransportation Management Plan\TMP\TerrellCounty Bridge 7\TMP\Brdge Rehab Project 02-2016\Plan Sheets\ISP\0891.6_TC_TMP_02_ROAD_CLOSURE_AT_NC94_DETOUR_POINT.dgn

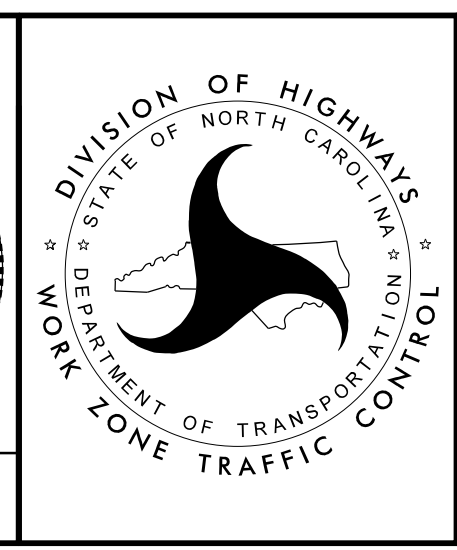
Stantec

Stantec Consulting Services Inc.
801 Jones Franklin Road
Suite 300
Raleigh, NC 27606
Tel. (919) 851-6866
Fax. (919) 851-7024
www.stantec.com
License No. F-0672

APPROVED: *Betsy L. Watson*
DATE: 7/27/2016

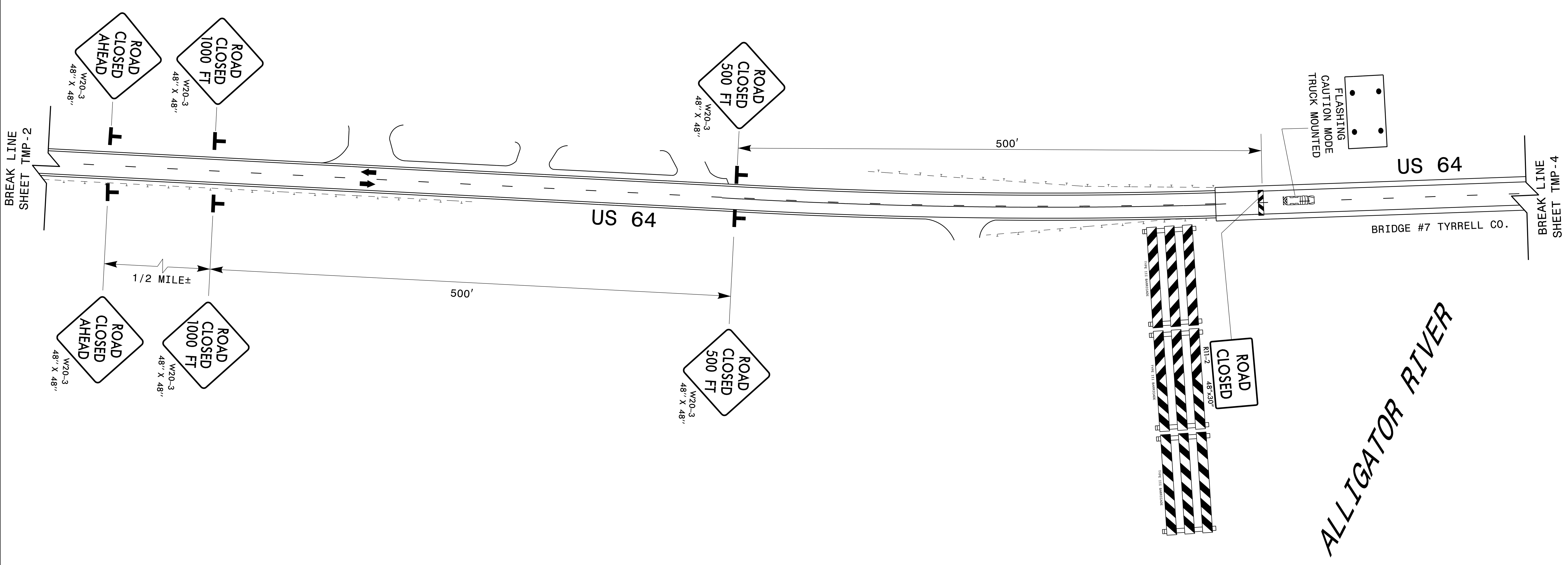
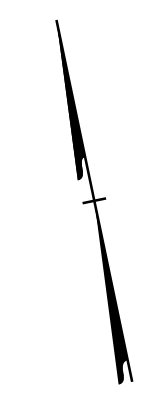
SEAL

**DOCUMENT NOT CONSIDERED FINAL
UNLESS ALL SIGNATURES COMPLETED**



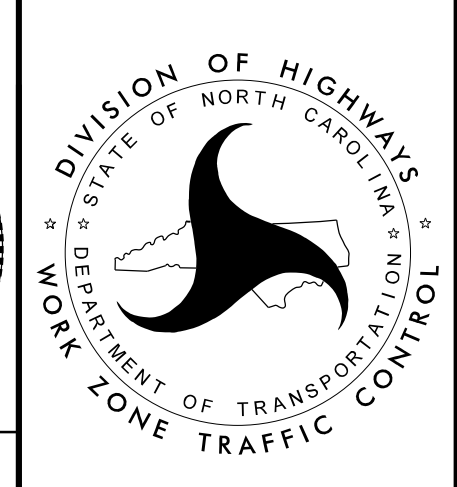
US 64/NC 94
DETOUR POINT

7/27/2016
Us\Traffic\Transportation Management Plan\TMP\Terrell County Bridge 7\TMP\Bridge Rehab Project 02-2016\Plan Sheets\NISP\0891\6_TC_TMP_03_ROAD_CLOSURE_AT_EAST_END_OF_BRIDGE.dgn
inambari



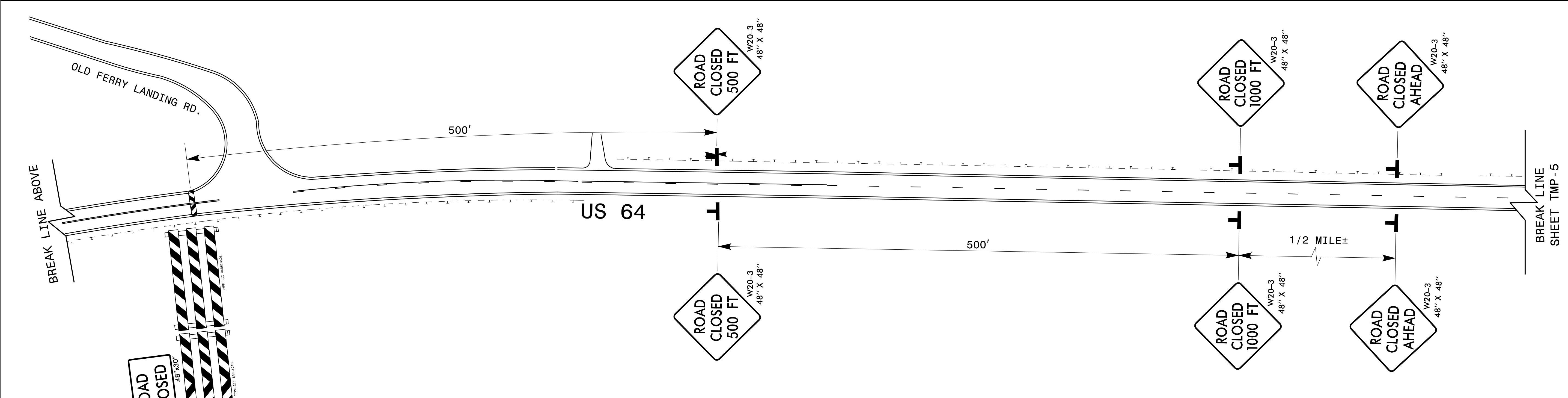
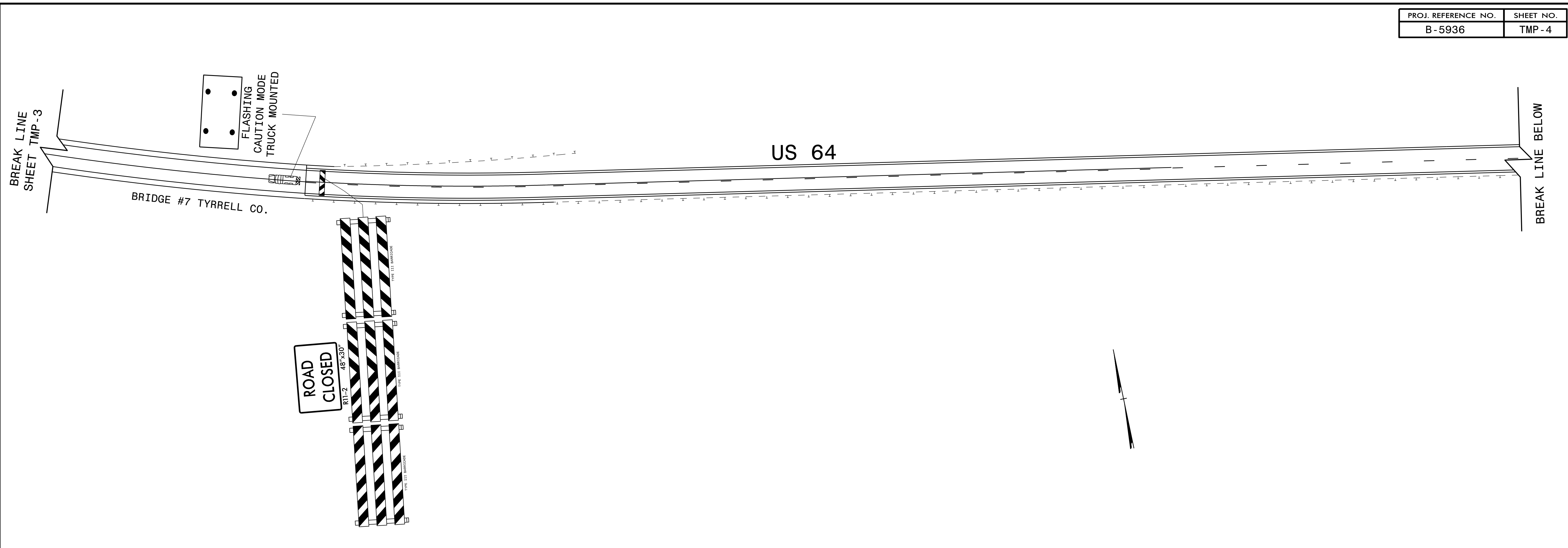
Stantec
 Stantec Consulting Services Inc.
 801 Jones Franklin Road
 Suite 300
 Raleigh, NC 27606
 Tel. (919) 851-6866
 Fax. (919) 851-7024
 www.stantec.com
 License No. F-0672

APPROVED: *Betsy L. Watson*
 DATE: 7/27/2016
 SEAL
**DOCUMENT NOT CONSIDERED FINAL
 UNLESS ALL SIGNATURES COMPLETED**



US 64 ROAD CLOSURE
**WESTERN END
 OF BRIDGE #7**

7/27/2016
UsTraffic\Transportation Management Plan\TMP\TyrrellCounty Bridge 7\TMP\Bridge Rehab Project 02-2016\Plan Sheets\ISP\0891\6_TC_TMP_04_ROAD_CLOSURE_AT WEST_END_OF_BRIDGE.dgn
Inambaright



BARRICADES MAY BE STAGGERED IN THE EVENT ACCESS IS NEEDED BETWEEN THIS POINT AND THE BRIDGE

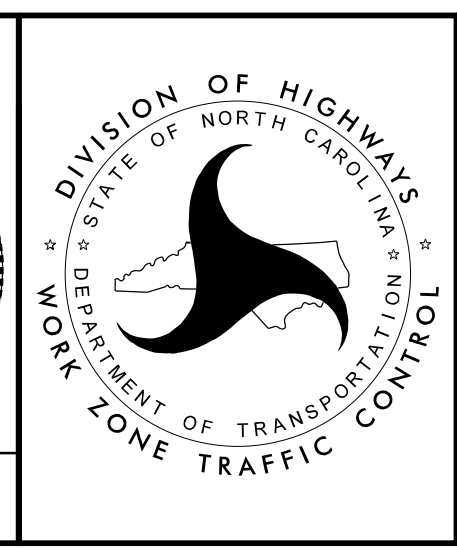
Stantec
 Stantec Consulting Services Inc.
 801 Jones Franklin Road
 Suite 300
 Raleigh, NC 27606
 Tel. (919) 851-6866
 Fax. (919) 851-7024
 www.stantec.com
 License No. F-0672

APPROVED: *Betsy L. Watson*
SEE078834F8743F...

DATE: 7/27/2016

SEAL

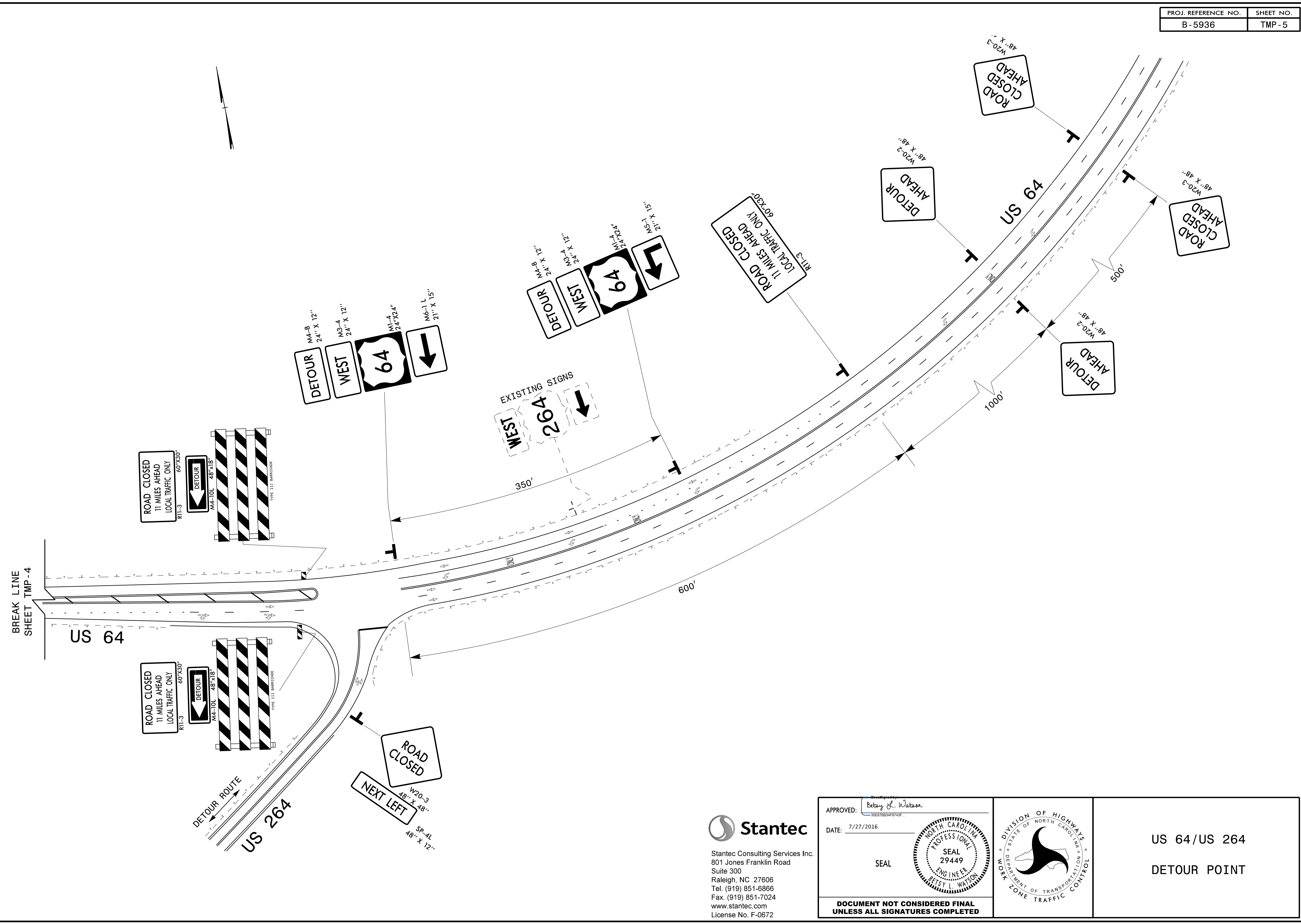
**DOCUMENT NOT CONSIDERED FINAL
UNLESS ALL SIGNATURES COMPLETED**



US 64 ROAD CLOSURE

**EASTERN END
OF BRIDGE #7**

7/27/2016
UsTraffic\Transportation Management Plan\TMP\Terrell County Bridge 7\TMP\Bridge Rehab Project 02-2016\Plan Sheets\ISP\08916_TC_TMP_05_ROAD_CLOSURE_AT_US264_DETOUR_POINT.dgn
inambright



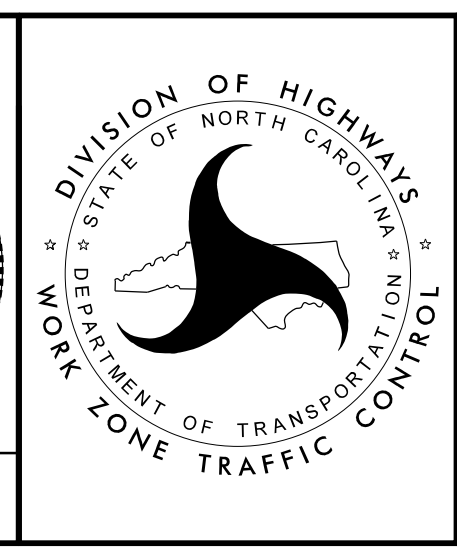
BREAK LINE
SHEET TMP-4

US 64

DETOUR ROUTE
US 264

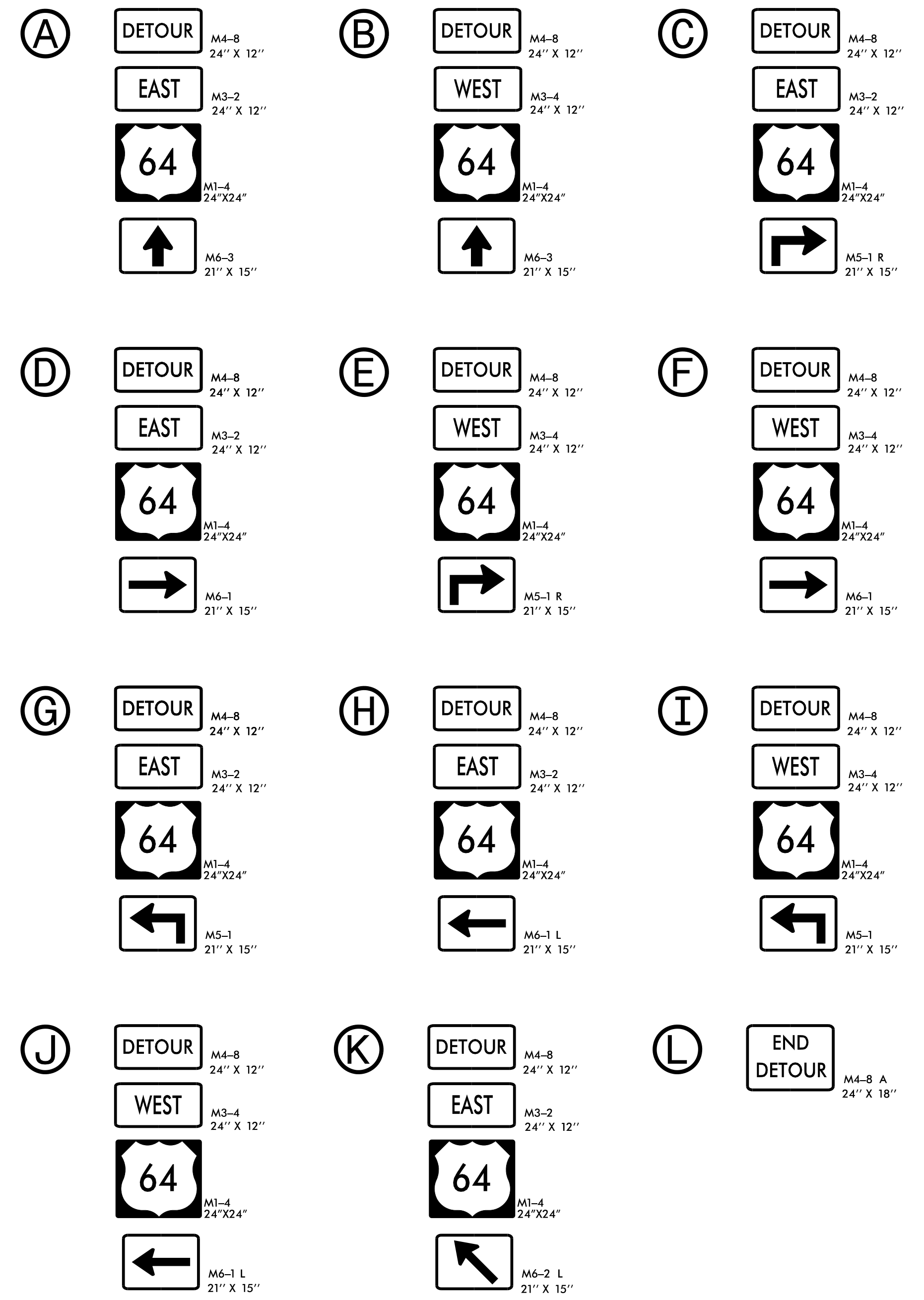
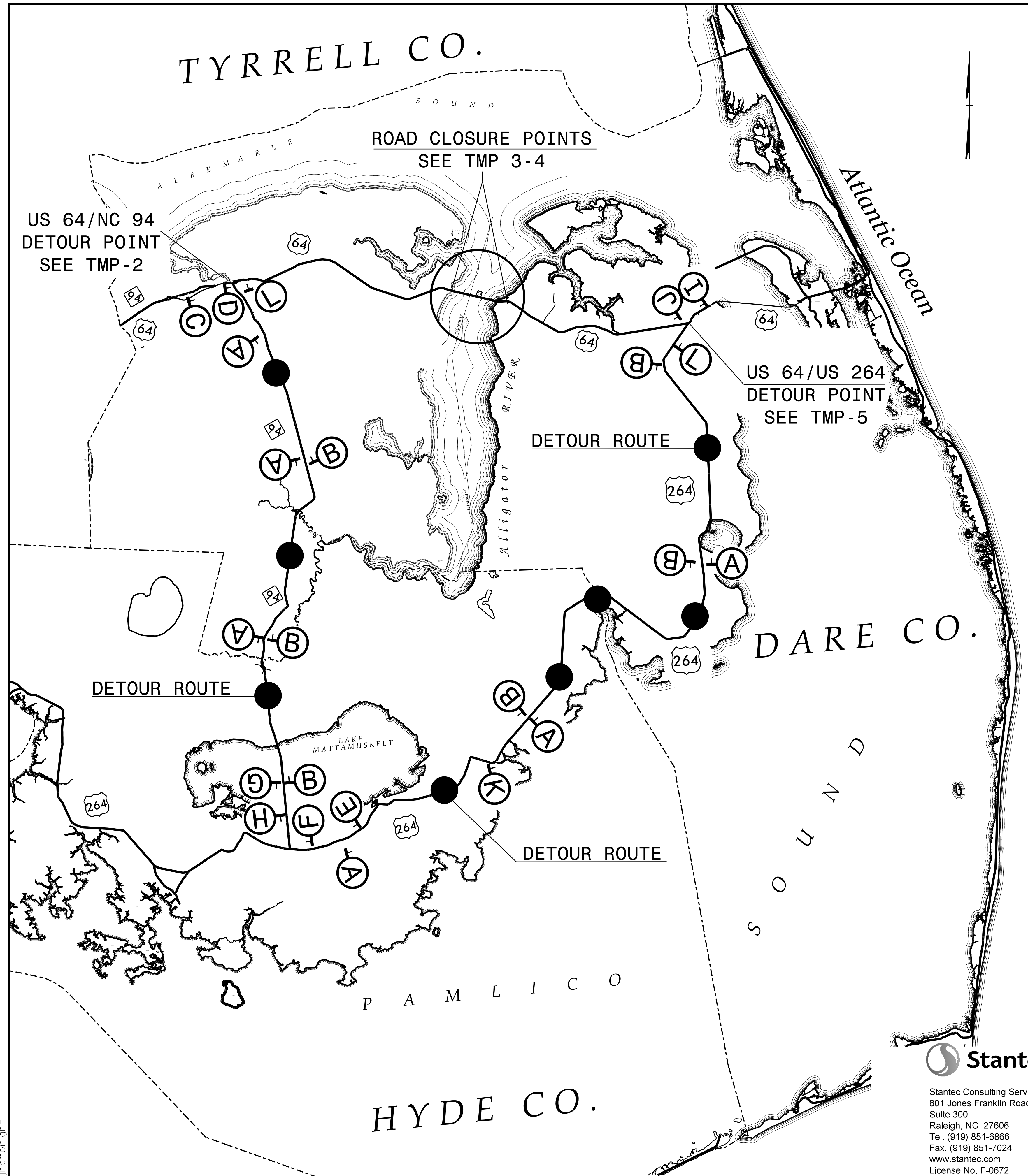
Stantec
 Stantec Consulting Services Inc.
 801 Jones Franklin Road
 Suite 300
 Raleigh, NC 27606
 Tel. (919) 851-6866
 Fax. (919) 851-7024
 www.stantec.com
 License No. F-0672

APPROVED: *Betsy L. Watson*
 DATE: 7/27/2016
 SEAL
**DOCUMENT NOT CONSIDERED FINAL
 UNLESS ALL SIGNATURES COMPLETED**



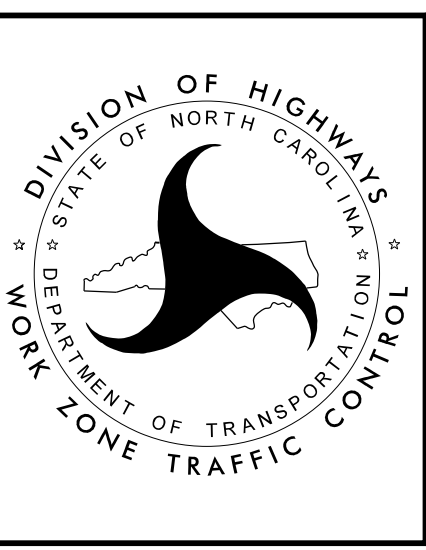
US 64/US 264
 DETOUR POINT

7/27/2016
UsTrafficTransportation Management Plan\TMP\TyrrellCounty Bridge 7\TMP\Bridge Rehab Project 02-2016\Plan Sheets\ISP\08916_TC_TMP_06_DETOUR_ROUTE.dgn
Inambari



Stantec
 Stantec Consulting Services Inc.
 801 Jones Franklin Road
 Suite 300
 Raleigh, NC 27606
 Tel. (919) 851-6866
 Fax. (919) 851-7024
 www.stantec.com
 License No. F-0672

APPROVED: *Betsy L. Watson*
 DATE: 7/27/2016
 SEAL
**DOCUMENT NOT CONSIDERED FINAL
 UNLESS ALL SIGNATURES COMPLETED**



**US 64
 DETOUR ROUTE**