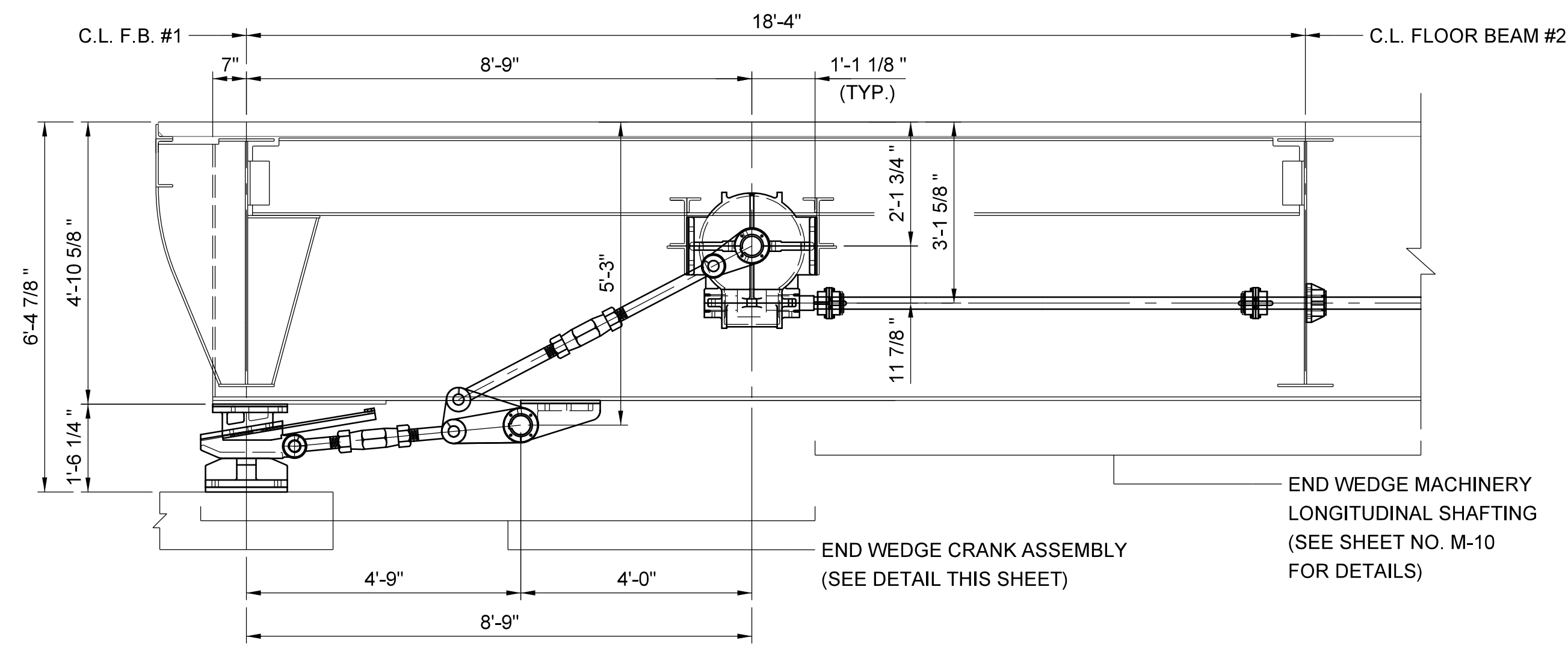
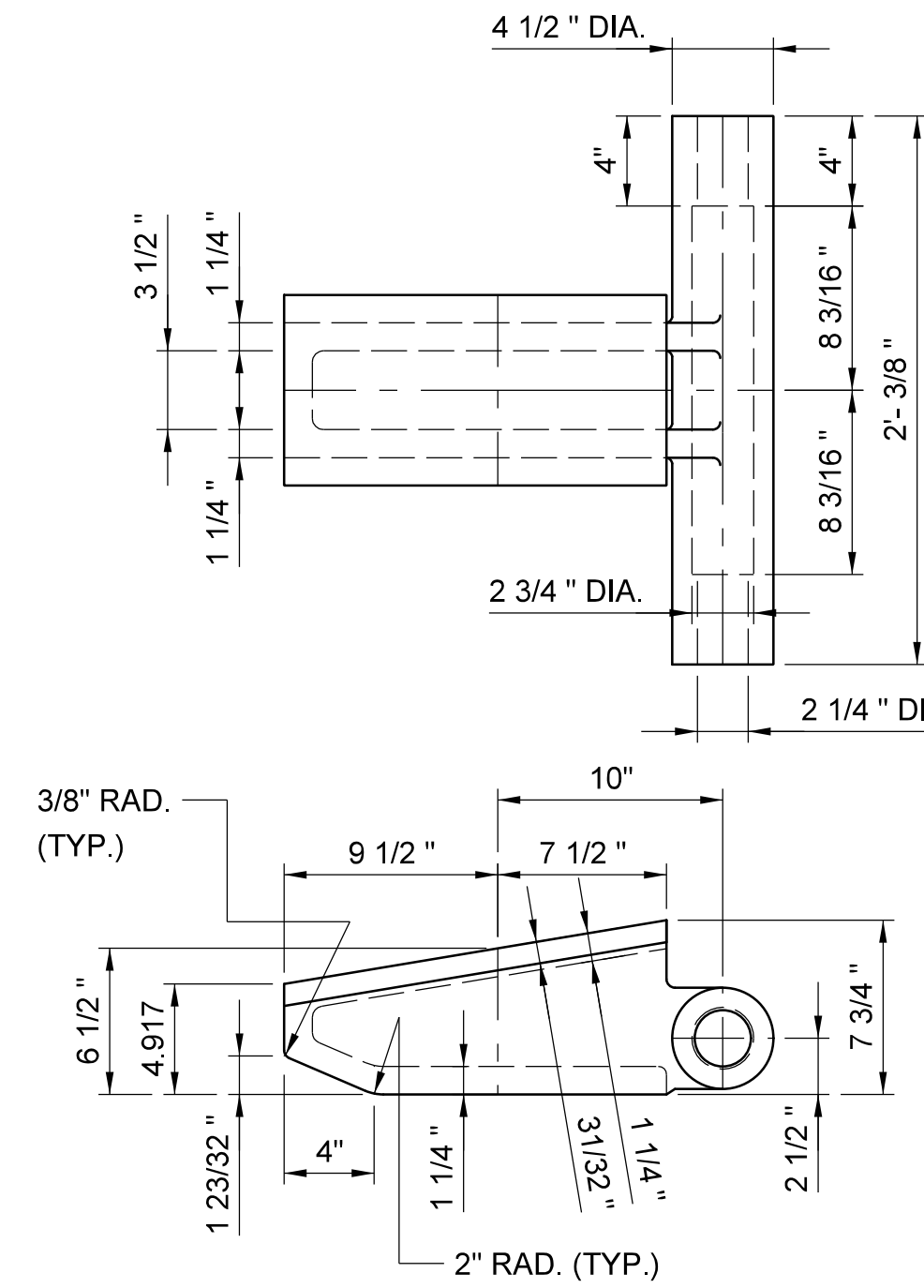


END WEDGE MACHINERY REHABILITATION NOTES:

- FOR A GENERAL DESCRIPTION OF WORK FOR EACH OF THE COMPONENTS SHOWN ON THIS SHEET, PLEASE REFER TO THE END WEDGE MACHINERY TABLES SHOWN ON SHEET NOS. M-13 AND M-14.
- END WEDGE WORM GEAR ASSEMBLY SHALL INCLUDE THE FOLLOWING PIECES: 208-217, 221-228 AND 230-232.

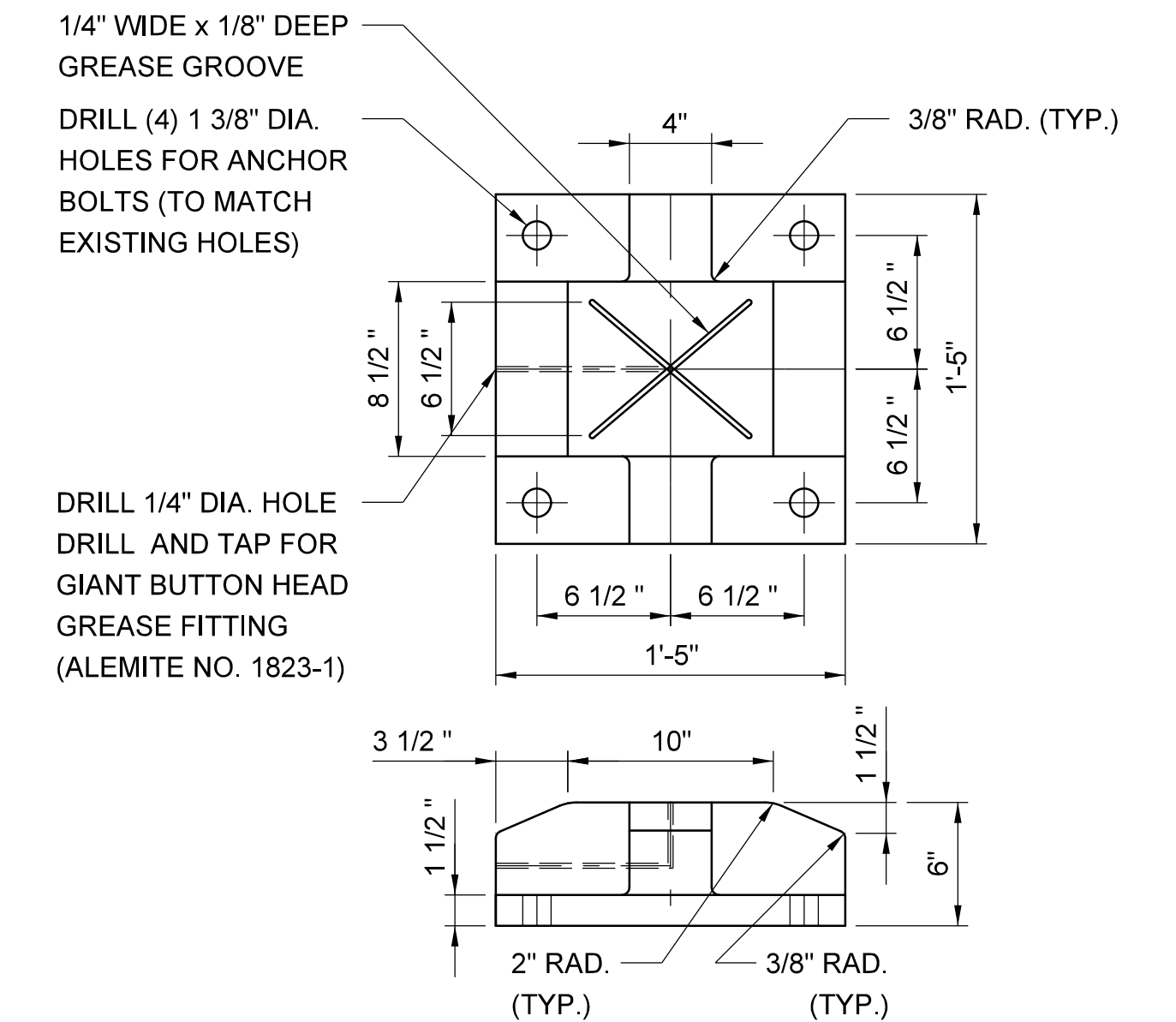


SECTION A-A
SCALE: 1/2" = 1'-0"

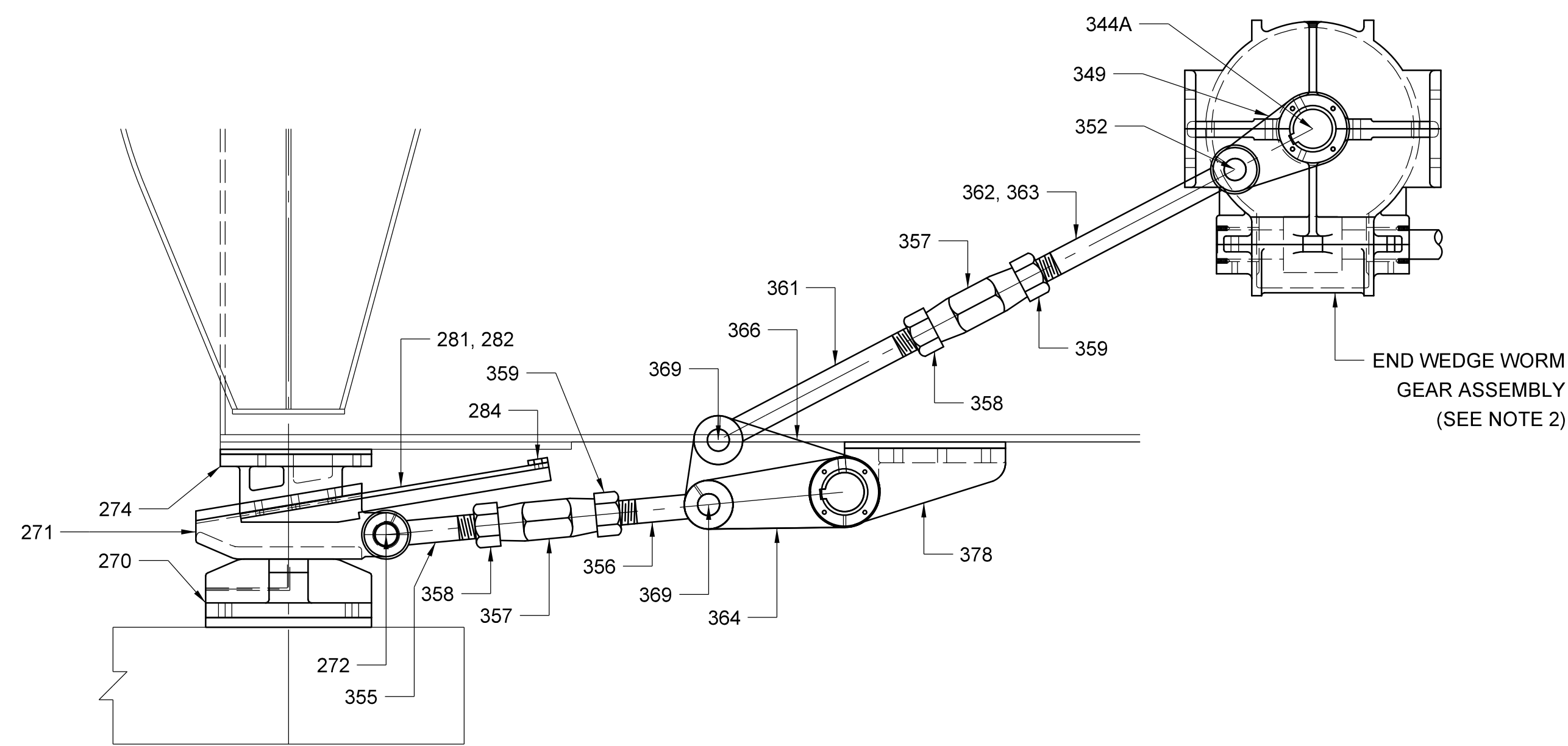


271A - END WEDGE
SCALE: 1 1/2" = 1'-0"

SECTION AT CENTER

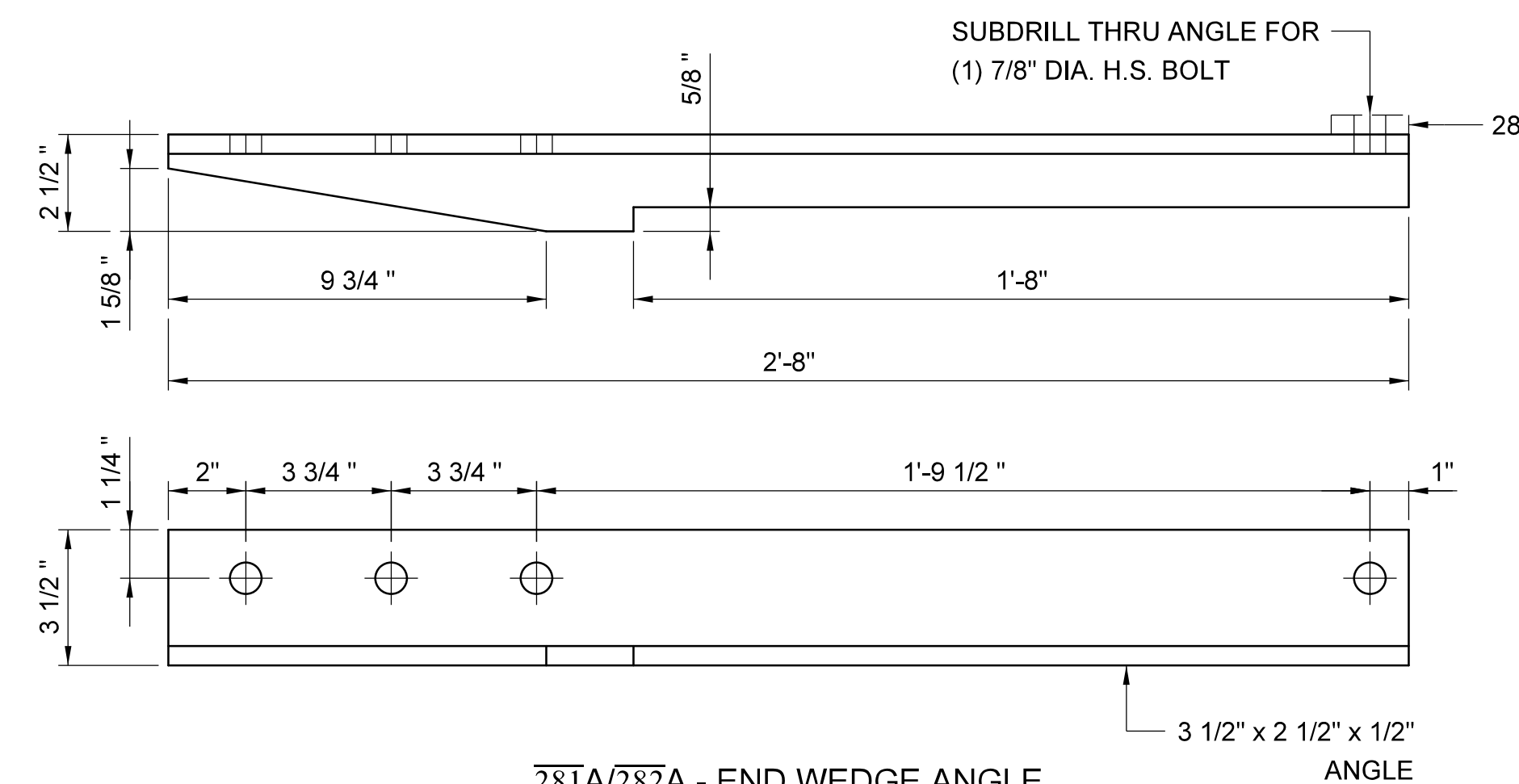


270A - END WEDGE SEAT
SCALE: 1 1/2" = 1'-0"



END WEDGE CRANK ASSEMBLY
SCALE: 1" = 1'-0"

END WEDGE WORM GEAR ASSEMBLY
(SEE NOTE 2)



281A/282A - END WEDGE ANGLE
SCALE: 3" = 1'-0"

PROJECT NO. B-5936
TYRRELL COUNTY
BRIDGE NO: 7

STATE OF NORTH CAROLINA
DEPARTMENT OF TRANSPORTATION
RALEIGH
END WEDGE MACHINERY DETAILS I
ALLIGATOR RIVER SWING SPAN

REVISIONS						SHEET NO.
NO.	BY:	DATE:	NO.	BY:	DATE:	M-8
1			3			TOTAL SHEETS
2			4			23

DRAWN BY: JAG/MS DATE: 8/8/2016
CHECKED BY: GAF/IRH DATE: 8/8/2016
DESIGN ENGINEER OF RECORD: JAG/MS DATE: 8/8/2016

DWG NUMBER: 75 TOTAL DWGS: 90

DOCUMENT NOT CONSIDERED FINAL UNLESS ALL SIGNATURES COMPLETED



DocuSigned by:
Scott Reynolds
BFC65720F6F14B0
9/14/2016

