

GIRDER, DIAPHRAGM, & DECK REPAIR TABLES						
SPAN	MEMBER	LENGTH FROM BENT (FT)	APPROX. REPAIR SIZE	ACTUAL REPAIR SIZE	LOCATION	BAY
2	END DIA.	@ BENT 1	2.2' X 0.6'		DIAPHRAGM	3
2	G-1	@ BENT 2	2.2' X 1'		* BOTTOM FLANGE	2
2	G-1	@ BENT 2	1.5' X 1.2'		WEB	1
2	G-1	@ BENT 2	0.9' X 1'		* BOTTOM FLANGE	1
2	G-1	@ BENT 2	0.4' X 1.3'		* BOTTOM FLANGE & WEB	1
2	G-1	@ BENT 1	3.7' X 1.3'		* BOTTOM FLANGE	LT EXT
2	G-1	10' FROM BENT 2	3' X 0.4'		* BOTTOM FLANGE	1
2	G-1	2' FROM BENT 1	0.3' X 1.2'		WEB	1
2	G-1	2' FROM BENT 2	0.6' X 1.2'		WEB	1
2	G-2	@ BENT 2	0.9' X 1.3'		* BOTTOM FLANGE & WEB	2
2	G-2	@ BENT 2	1' X 1.8'		* BOTTOM FLANGE & WEB	2
2	G-2	2' FROM INTER. DIA.	0.8' X 0.7'		WEB	2
2	G-2	@ BENT 2	2' X 2'		WEB	2
2	G-2	@ BENT 2	2' X 2'		* BOTTOM FLANGE	1
2	G-2	@ BENT 2	10.5' X 1.2'		WEB	2
2	G-2	@ BENT 2	1.3' X 0.7'		* BOTTOM FLANGE	1
2	G-2	@ BENT 2	0.8' X 1.2'		WEB	1
2	G-2	10.5' FROM BENT 2	1.2' X 1.2'		WEB	1
2	G-2	7' FROM BENT 2	0.6' X 0.6'		* BOTTOM FLANGE	2
2	G-3	@ BENT 2	1.1' X 1'		* BOTTOM FLANGE	3
2	G-3	@ BENT 2	2' X 2'		WEB	3
2	G-3	@ BENT 1	2' X 2'		WEB	2
2	G-3	@ BENT 2	1.8' X 2'		* BOTTOM FLANGE	2
2	G-3	3' FROM INTER. DIA.	1.5' X 1.2'		WEB	2
2	G-3	@ BENT 2	1.6' X 1'		* BOTTOM FLANGE	2
2	G-3	@ BENT 2	1.1' X 1.3'		WEB	2
2	G-3	13' FROM BENT 1	13' X 3'		WEB	3
2	G-4	@ BENT 1	1.5' X 1'		WEB	RT EXT
2	G-4	@ BENT 2	0.8' X 1.2'		WEB	RT EXT
2	G-4	@ BENT 2	1' X 0.6'		WEB	3
2	G-4	@ BENT 1	50' X 2'		WEB	3
2	G-4	@ BENT 2	1.1' X 1.5'		* BOTTOM FLANGE	3
2	G-4	@ BENT 2	3' X 2'		WEB	3
2	G-4	2' FROM BENT 1	0.8' X 1.5'		WEB	RT EXT
2	G-4	6' FROM END BENT 1	0.5' X 1'		* BOTTOM FLANGE	RT EXT
2	G-4	8' FROM BENT 1	0.7' X 0.7'		* BOTTOM FLANGE	3
2	INTER. DIA.	25' FROM BENT 1	0.2' X 1.1'		DIAPHRAGM	3
2	INTER. DIA.	25' FROM BENT 1	1' X 0.4'		DIAPHRAGM	2

GIRDER, DIAPHRAGM, & DECK REPAIR TABLES						
SPAN	MEMBER	LENGTH FROM BENT (FT)	APPROX. REPAIR SIZE	ACTUAL REPAIR SIZE	LOCATION	BAY
3	DECK	2' FROM BENT 2	3.2' X 3.3'		BOTTOM OF DECK	1
3	DECK	3' FROM BENT 2	2' X 2'		BOTTOM OF DECK	1
3	DECK	5' FROM BENT 2	2' X 0.8'		BOTTOM OF DECK	1
3	DECK	8' FROM BENT 2	2' X 2'		BOTTOM OF DECK	1
3	DECK	4' FROM BENT 2	1.2' X 0.8'		BOTTOM OF DECK	3
3	END DIA.	@ BENT 2	1.5' X 1'		DIAPHRAGM	1
3	END DIA.	@ BENT 2	0.8' X 1.2'		DIAPHRAGM	1
3	END DIA.	@ BENT 2	0.7' X 1.5'		DIAPHRAGM	1
3	END DIA.	@ BENT 2	4' X 0.6'		DIAPHRAGM	3
3	G-1	@ BENT 2	1.3' X 1'		WEB	LT EXT
3	G-1	@ BENT 2	1' X 0.6'		* BOTTOM FLANGE	1
3	G-1	@ BENT 2	1' X 0.2'		* BOTTOM FLANGE & WEB	1
3	G-1	10' FROM BENT 2	3.2' X 0.4'		* BOTTOM FLANGE	LT EXT
3	G-2	@ BENT 2	0.9' X 2'		* BOTTOM FLANGE & WEB	1
3	G-2	@ BENT 3	5' X 0.5'		* BOTTOM FLANGE	1
3	G-2	@ BENT 3	2' X 2'		WEB	1
3	G-2	@ BENT 3	1' X 1.3'		* BOTTOM FLANGE & WEB	2
3	G-2	@ BENT 2	11.5' X 1.2'		WEB	2
3	G-2	@ BENT 2	5' X 0.5'		* BOTTOM FLANGE	2
3	G-2	4' FROM INTER. DIA.	3.5' X 0.5'		* BOTTOM FLANGE	2
3	G-2	4' FROM BENT 3	2' X 1'		WEB	2
3	G-3	@ BENT 3	1.2' X 1.3'		* BOTTOM FLANGE & WEB	2
3	G-3	@ BENT 2	2.2' X 1'		* BOTTOM FLANGE	3
3	G-3	@ BENT 2	0.8' X 0.6'		* BOTTOM FLANGE	3
3	G-3	@ BENT 2	0.8' X 0.6'		* BOTTOM FLANGE	3
3	G-3	2' FROM BENT 2	8.3' X 1.2'		WEB	2
3	G-3	2' FROM BENT 3	0.9' X 1.2'		WEB	2
3	G-3	2.5' FROM BENT 2	3.7' X 1.2'		WEB	3
3	G-3	5' FROM BENT 2	4' X 0.8'		* BOTTOM FLANGE	2
3	G-3	9' FROM BENT 3	4.5' X 0.5'		* BOTTOM FLANGE	2
3	G-4	@ INTER. DIA.	4.5' X 0.8'		* BOTTOM FLANGE	3
3	G-4	@ BENT 2	1.7' X 1'		* BOTTOM FLANGE	RT EXT
3	G-4	@ BENT 2	4' X 1.2'		WEB	RT EXT
3	G-4	@ BENT 3	0.5' X 0.7'		* BOTTOM FLANGE	RT EXT
3	G-4	@ BENT 2	14' X 1.2'		WEB	3
3	G-4	@ BENT 2	17' X 1'		* BOTTOM FLANGE	3
3	G-4	2' FROM INTER. DIA.	6' X 0.8'		* BOTTOM FLANGE	3
3	G-4	5' FROM BENT 3	1.2' X 0.8'		WEB	3

REPAIR QUANTITY TABLE						
		QUANTITIES				
		ESTIMATE		ACTUAL		
		AREA SF	VOLUME CF	AREA SF	DEPTH FT	VOLUME CF
SPAN 2 & 3	SHOTCRETE					
	GIRDERS	242.07	70.60			
	DIAPHRAGMS	7.85	3.93			
	DECK	21.12	10.56			
EPOXY MORTAR		AREA SF	VOLUME CF	AREA SF	DEPTH FT	VOLUME CF
GIRDERS		76.36	22.27			

VALUES IN CHART REPRESENT ESTIMATED REPAIR TOTALS AFTER REMOVAL OF UNSOUND CONCRETE, MIN. OF 1" BEHIND REBAR AND MIN. 1" CL TO SAWCUT. SEE REPAIR DETAILS.

FOR SHOTCRETE REPAIRS, SEE SPECIAL PROVISIONS.

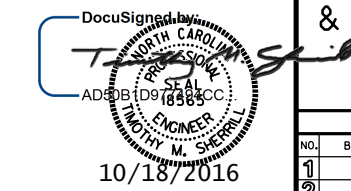
FOR EPOXY MORTAR REPAIRS, SEE SPECIAL PROVISIONS.

CONTRACTOR MAY ELECT TO USE EPOXY MORTAR IN LIEU OF SHOTCRETE.

\* ALL REPAIRS IN GIRDER FLANGE OR INCLUDING GIRDER FLANGE IN REPAIR SHALL BE EPOXY MORTAR.

PROJECT NO. B-5936  
TYRRELL COUNTY  
BRIDGE NO. 7

SHEET 2 OF 22



STATE OF NORTH CAROLINA DEPARTMENT OF TRANSPORTATION RALEIGH					
GIRDER, DIAPHRAGM & UNDERDECK REPAIRS					
REVISIONS					SHEET NO.
NO.	BY:	DATE:	NO.	BY:	DATE:
1			3		
2			4		
					S-17
					TOTAL SHEETS
					394

DRAWN BY : M.ALEE DATE : 6/2016  
CHECKED BY : T.SHERRILL DATE : 6/2016  
DESIGN ENGINEER OF RECORD: T.SHERRILL DATE : 6/2016