

**This electronic collection of documents is provided
for the convenience of the user
and is Not a Certified Document –**

**The documents contained herein were originally issued
and sealed by the individuals whose names and license
numbers appear on each page, on the dates appearing
with their signature on that page.**

**This file or an individual page
shall not be considered a certified document.**

TIP PROJECT: B-4814

STATE OF NORTH CAROLINA

DIVISION OF HIGHWAYS

PLAN FOR PROPOSED HIGHWAY EROSION CONTROL

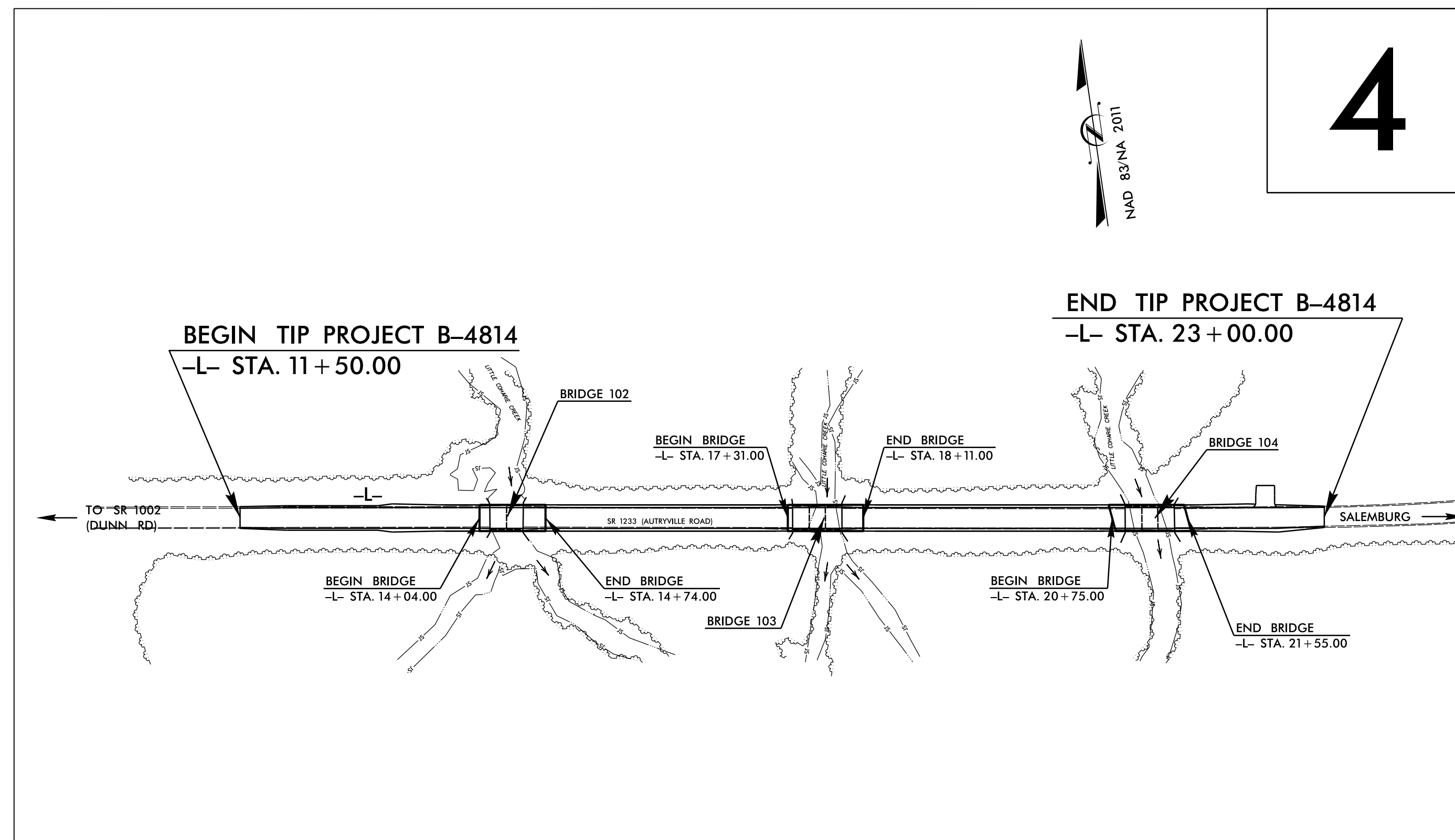
SAMPSON COUNTY

**LOCATION: BRIDGES NO. 102, 103, AND 104 OVER LITTLE
COHARIE CREEK ON SR 1233 (AUTRYVILLE RD.)**
TYPE OF WORK: GRADING, PAVING, DRAINAGE, AND STRUCTURES

STATE	STATE PROJECT REFERENCE NO.	SHEET NO.	TOTAL SHEETS
N.C.	B-4814	EC-1	
STATE PROJ. NO.	F.A. PROJ. NO.	DESCRIPTION	

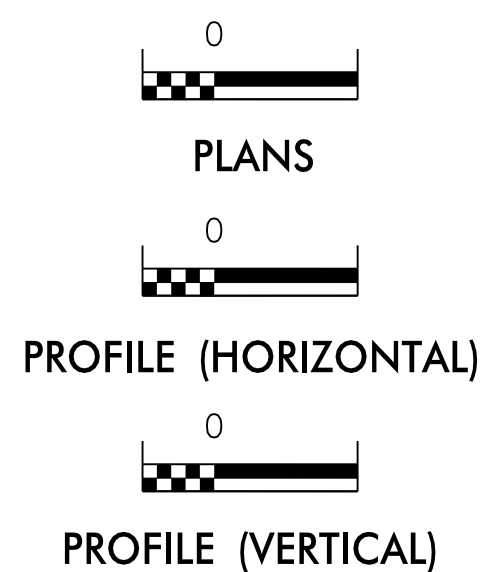
EROSION AND SEDIMENT CONTROL MEASURES

Std. #	Description	Symbol
1630.03	Temporary Silt Ditch	TD
1630.05	Temporary Diversion	TD
1605.01	Temporary Silt Fence	TSF
1606.01	Special Sediment Control Fence	SSCF
1622.01	Temporary Berms and Slope Drains	TBSD
1630.02	Silt Basin Type B	SBSB
1633.01	Temporary Rock Silt Check Type-A	TRSCTA
	Temporary Rock Silt Check Type-A with Matting and Polyacrylamide (PAM)	TRSCTA-PAM
1633.02	Temporary Rock Silt Check Type-B	TRSCBT
	Wattle/Coir Fiber Wattle	WCFW
	Wattle/Coir Fiber Wattle with Polyacrylamide (PAM)	WCFW-PAM
1634.01	Temporary Rock Sediment Dam Type-A	TRSDA
1634.02	Temporary Rock Sediment Dam Type-B	TRSDA-B
1635.01	Rock Pipe Inlet Sediment Trap Type-A	RPISTRA
1635.02	Rock Pipe Inlet Sediment Trap Type-B	RPISTRB
1630.04	Stilling Basin	SB
1630.06	Special Stilling Basin	SSB
	Rock Inlet Sediment Trap:	
1632.01	Type A	A
1632.02	Type B	B
1632.03	Type C	C
	Skimmer Basin	SKB
	Tiered Skimmer Basin	TSKB
	Infiltration Basin	IB



THIS PROJECT CONTAINS
EROSION CONTROL PLANS
FOR CLEARING AND
GRUBBING PHASE OF
CONSTRUCTION.

GRAPHIC SCALE



ROADSIDE ENVIRONMENTAL UNIT
DIVISION OF HIGHWAYS
STATE OF NORTH CAROLINA

THESE EROSION AND SEDIMENT CONTROL PLANS COMPLY
WITH THE REGULATIONS SET FORTH BY THE
NCG-010000 GENERAL CONSTRUCTION PERMIT EFFECTIVE AUGUST 3, 2011
ISSUED BY THE NORTH CAROLINA DEPARTMENT OF ENVIRONMENT AND
NATURAL RESOURCES DIVISION OF WATER QUALITY.

Prepared in the Office of:
ROADSIDE ENVIRONMENTAL UNIT
1 South Wilmington St.
Raleigh, NC 27611
2012 STANDARD SPECIFICATIONS

Designed by:
WES CHANDLER, EI **3374**
NAME LEVEL III CERTIFICATION NO.

Roadway Standard Drawings

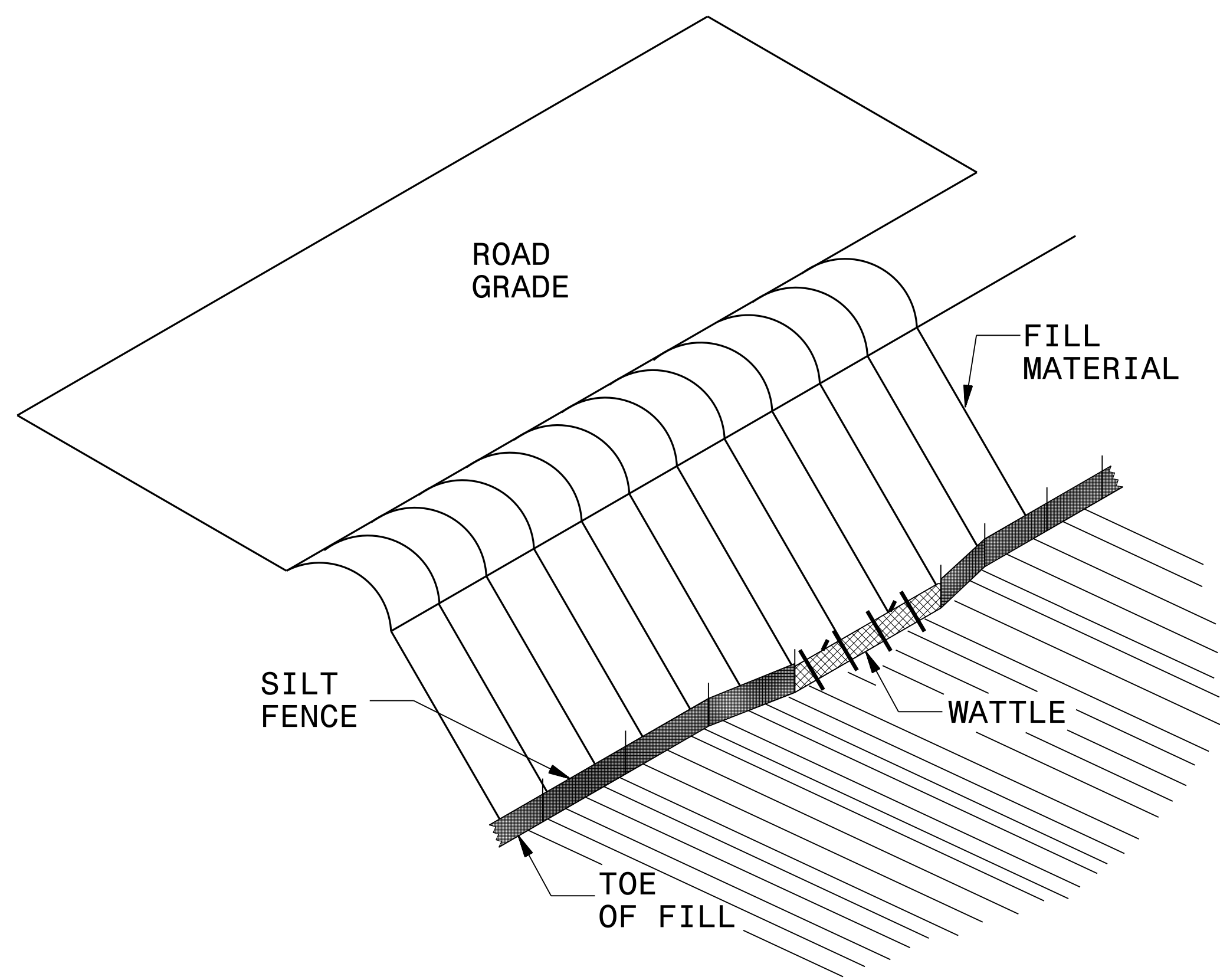
The following roadway english standards as appear in "Roadway Standard Drawings"- Roadway Design Unit - N. C. Department of Transportation - Raleigh, N. C., dated January 2012 and the latest revision thereto are applicable to this project and by reference hereby are considered a part of these plans.

1604.01 Railroad Erosion Control Detail	1632.01 Rock Inlet Sediment Trap Type A
1605.01 Temporary Silt Fence	1632.02 Rock Inlet Sediment Trap Type B
1606.01 Special Sediment Control Fence	1632.03 Rock Inlet Sediment Trap Type C
1607.01 Gravel Construction Entrance	1633.01 Temporary Rock Silt Check Type A
1622.01 Temporary Berms and Slope Drains	1633.02 Temporary Rock Silt Check Type B
1630.01 Riser Basin	1634.01 Temporary Rock Sediment Dam Type A
1630.02 Silt Basin Type B	1634.02 Temporary Rock Sediment Dam Type B
1630.03 Temporary Silt Ditch	1635.01 Rock Pipe Inlet Sediment Trap Type A
1630.04 Stilling Basin	1635.02 Rock Pipe Inlet Sediment Trap Type B
1630.05 Temporary Diversion	1640.01 Coir Fiber Baffle
1630.06 Special Stilling Basin	1645.01 Temporary Stream Crossing
1631.01 Matting Installation	

R-18-AUG-2016 13:32
w:\jchandler\proj\conperm\plan\B-4814_EC_tsh.dgn

SILT FENCE COIR FIBER WATTLE BREAK DETAIL

PROJECT REFERENCE NO. B-4814	SHEET NO. EC-2
RW SHEET NO.	
ROADWAY DESIGN ENGINEER	HYDRAULICS ENGINEER

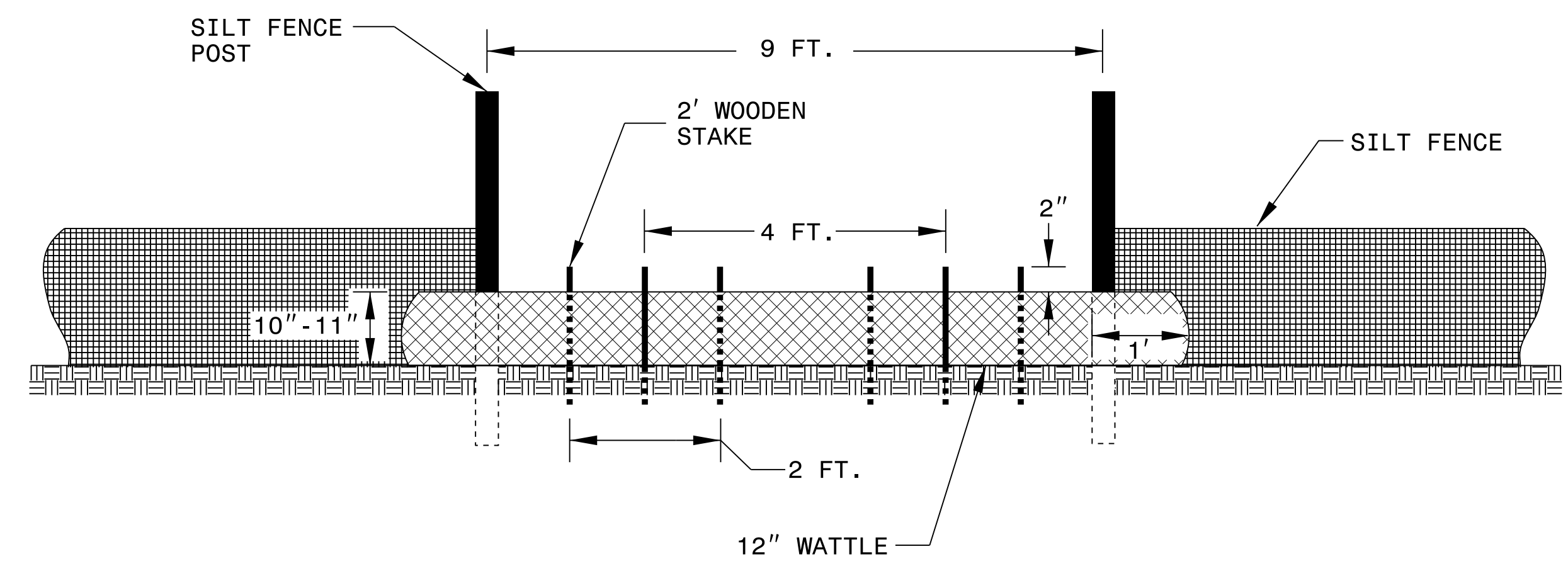
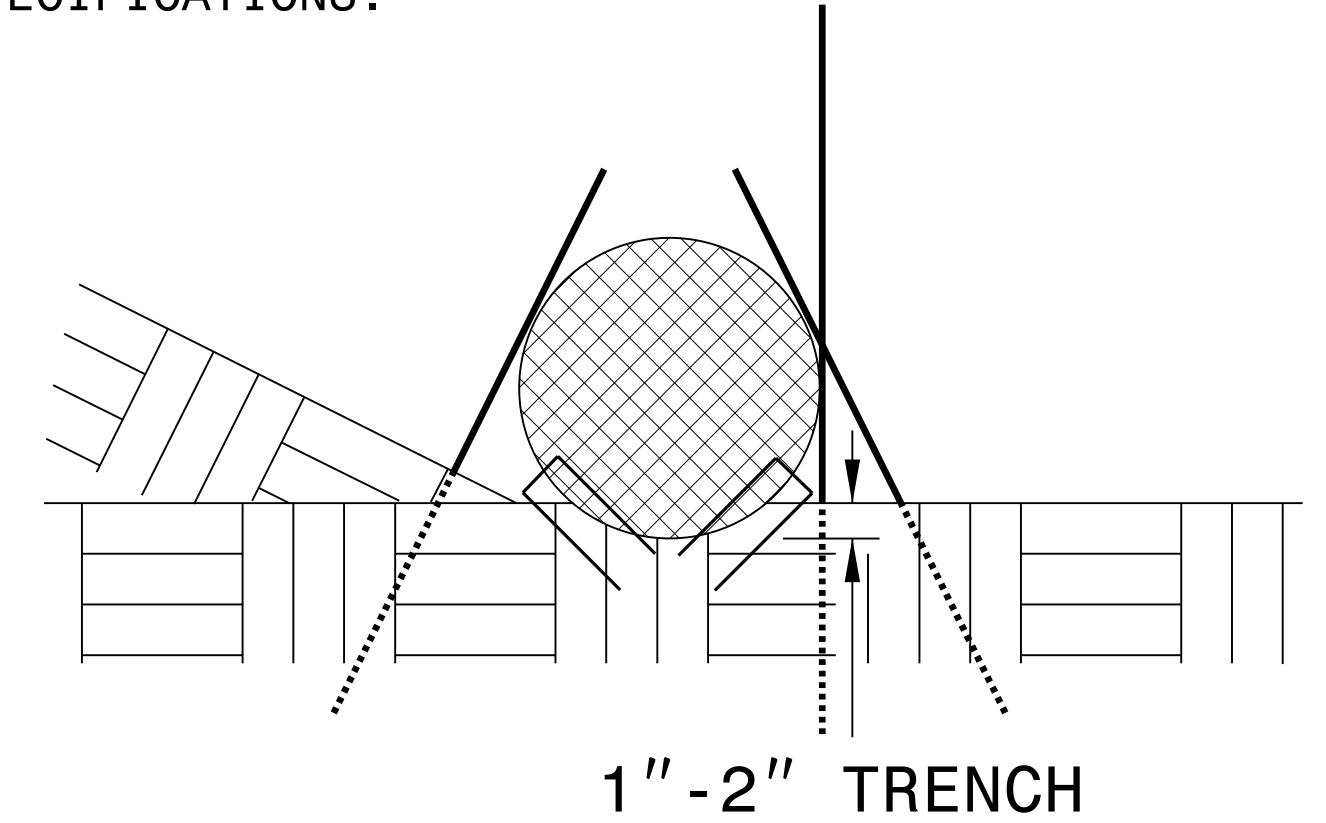


ISOMETRIC VIEW

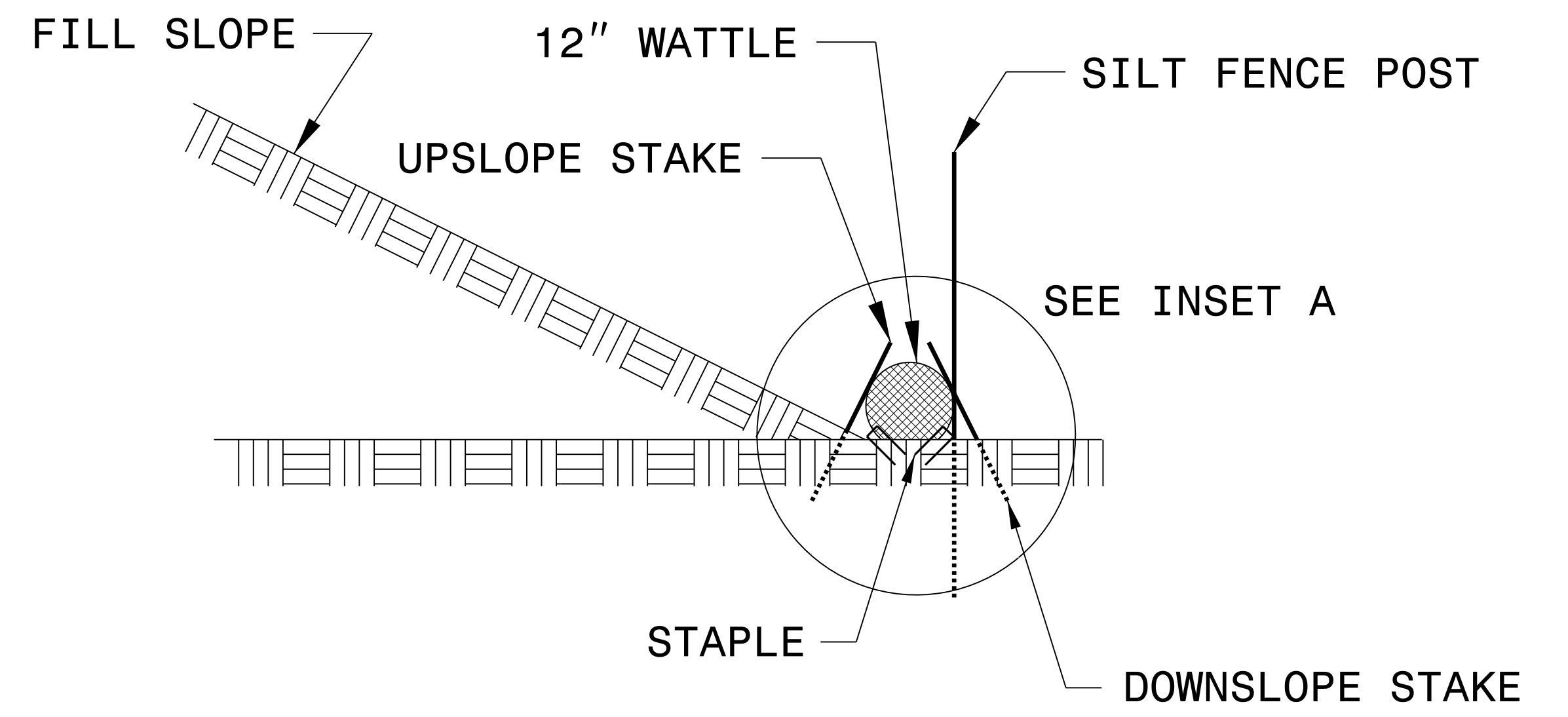
NOTES:

- USE MINIMUM 12 IN. DIAMETER COIR FIBER (COCONUT FIBER) WATTLE AND LENGTH OF 10 FT.
- EXCAVATE A 1 TO 2 INCH TRENCH FOR WATTLE TO BE PLACED.
- DO NOT PLACE WATTLE ON TOE OF SLOPE.
- USE 2 FT. WOODEN STAKES WITH A 2 IN. BY 2 IN. NOMINAL CROSS SECTION.
- INSTALL A MINIMUM OF 2 UPSLOPE STAKES AND 4 DOWNSLOPE STAKES AT AN ANGLE TO WEDGE WATTLE TO GROUND.
- PROVIDE STAPLES MADE OF 0.125 IN. DIAMETER STEEL WIRE FORMED INTO A U SHAPE NOT LESS THAN 12" IN LENGTH.
- INSTALL STAPLES APPROXIMATELY EVERY 1 LINEAR FOOT ON BOTH SIDES OF WATTLE AND AT EACH END TO SECURE IT TO THE SOIL.
- WATTLE INSTALLATION CAN BE ON OUTSIDE OF THE SILT FENCE AS DIRECTED.
- INSTALL TEMPORARY SILT FENCE IN ACCORDANCE WITH SECTION 1605 OF THE STANDARD SPECIFICATIONS.

INSET A



VIEW FROM SLOPE



SIDE VIEW

DIVISION OF HIGHWAYS
STATE OF NORTH CAROLINA

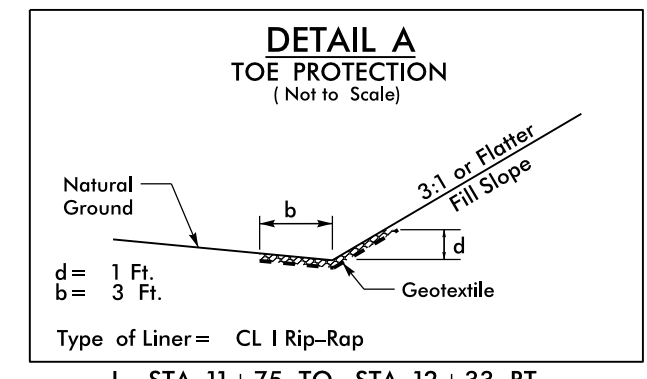
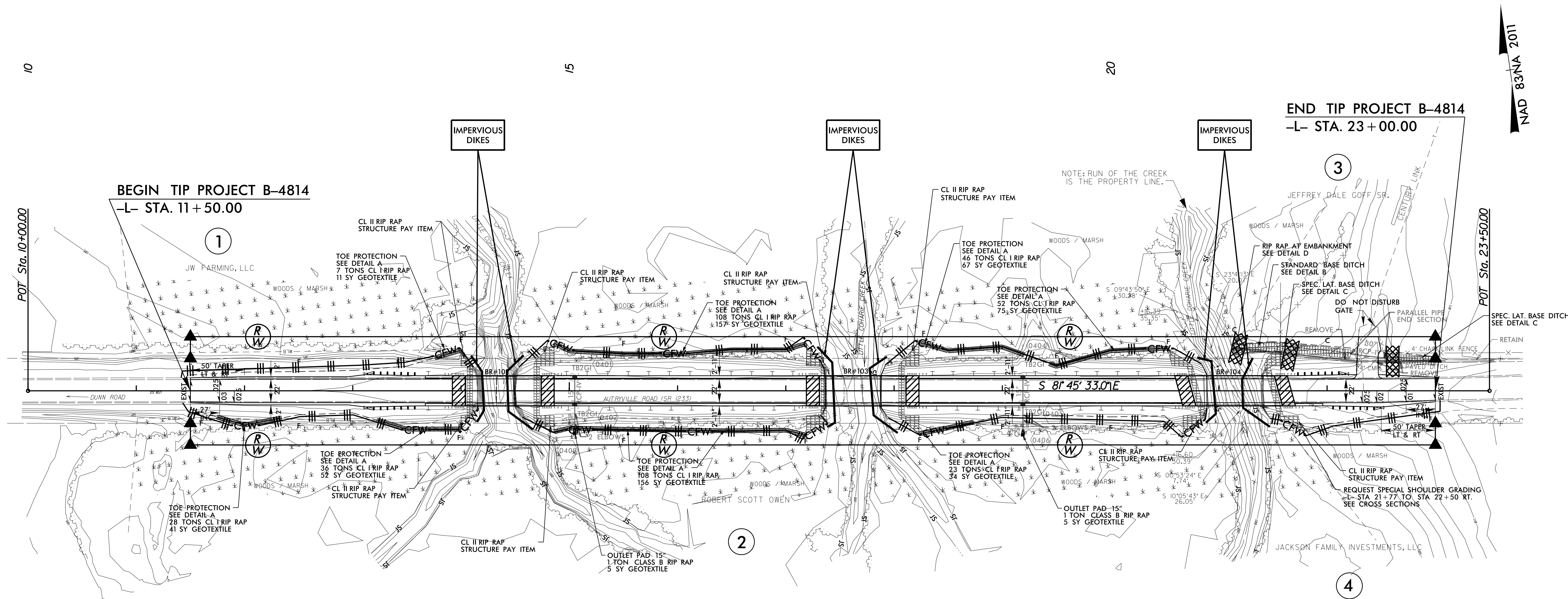
PROJECT REFERENCE NO. <i>B-4814</i>	SHEET NO. <i>EC-3</i>
ROADWAY DESIGN ENGINEER	HYDRAULICS ENGINEER

SOIL STABILIZATION TIMEFRAMES

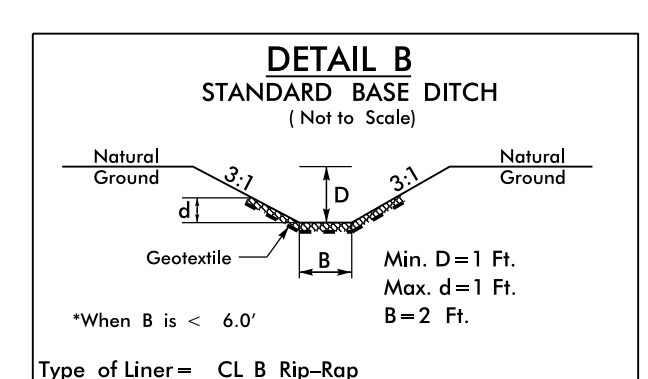
<i>SITE DESCRIPTION</i>	<i>STABILIZATION TIME</i>	<i>TIMEFRAME EXCEPTIONS</i>
PERIMETER DIKES, SWALES, DITCHES AND SLOPES	7 DAYS	NONE
HIGH QUALITY WATER (HQW) ZONES	7 DAYS	NONE
SLOPES STEEPER THAN 3:1	7 DAYS	IF SLOPES ARE 10' OR LESS IN LENGTH AND ARE NOT STEEPER THAN 2:1, 14 DAYS ARE ALLOWED.
SLOPES 3:1 OR FLATTER	14 DAYS	7 DAYS FOR SLOPES GREATER THAN 50' IN LENGTH.
ALL OTHER AREAS WITH SLOPES FLATTER THAN 4:1	14 DAYS	NONE, EXCEPT FOR PERIMETERS AND HQW ZONES.

PROJECT REFERENCE NO.	SHEET NO.
B-4814	EC-4/CONST.4
RW SHEET NO.	
ROADWAY DESIGN ENGINEER	HYDRAULICS ENGINEER

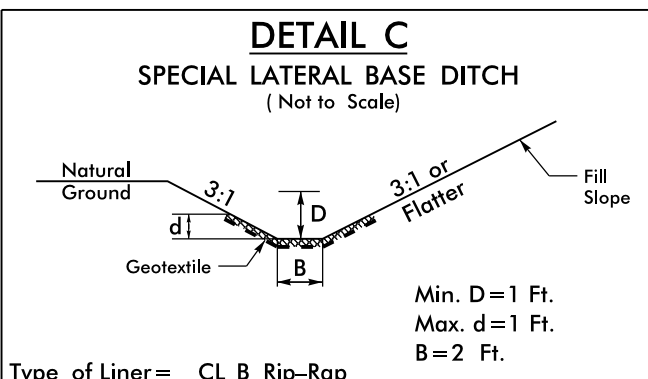
NOTE:
UTILIZE SPECIAL STILLING BASIN(S) AS STILLING BASIN WHERE APPLICABLE.



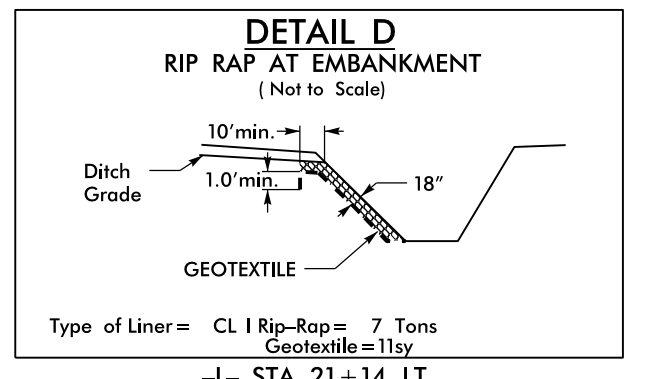
- L- STA. 11+75 TO STA. 12+33 RT.
- L- STA. 13+22 TO STA. 14+00 RT.
- L- STA. 13+85 TO STA. 14+00 LT.
- L- STA. 14+86 TO STA. 17+19 LT.
- L- STA. 14+86 TO STA. 17+19 RT.
- L- STA. 18+23 TO STA. 19+20 LT.
- L- STA. 18+23 TO STA. 18+73 RT.
- L- STA. 19+43 TO STA. 20+52 LT.



- L- STA. 21+14 TO STA. 21+57 LT., S=4.22%, DDE=8 CY, CL B Rip-Rap=17 Tons, Geotextile=38sy



- L- STA. 21+57 TO STA. 23+00 LT., CL B Rip-Rap= 57 Tons, Geotextile=127sy



- L- STA. 21+14 LT.

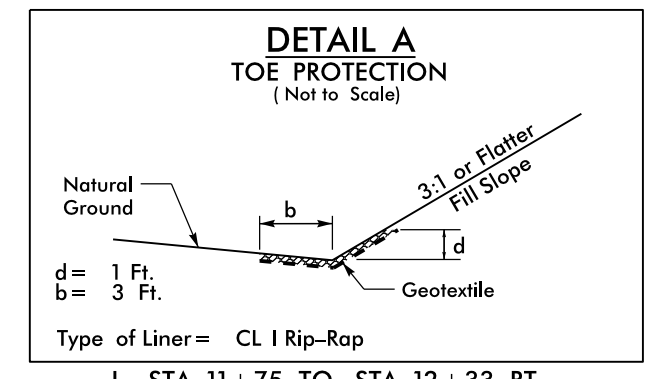
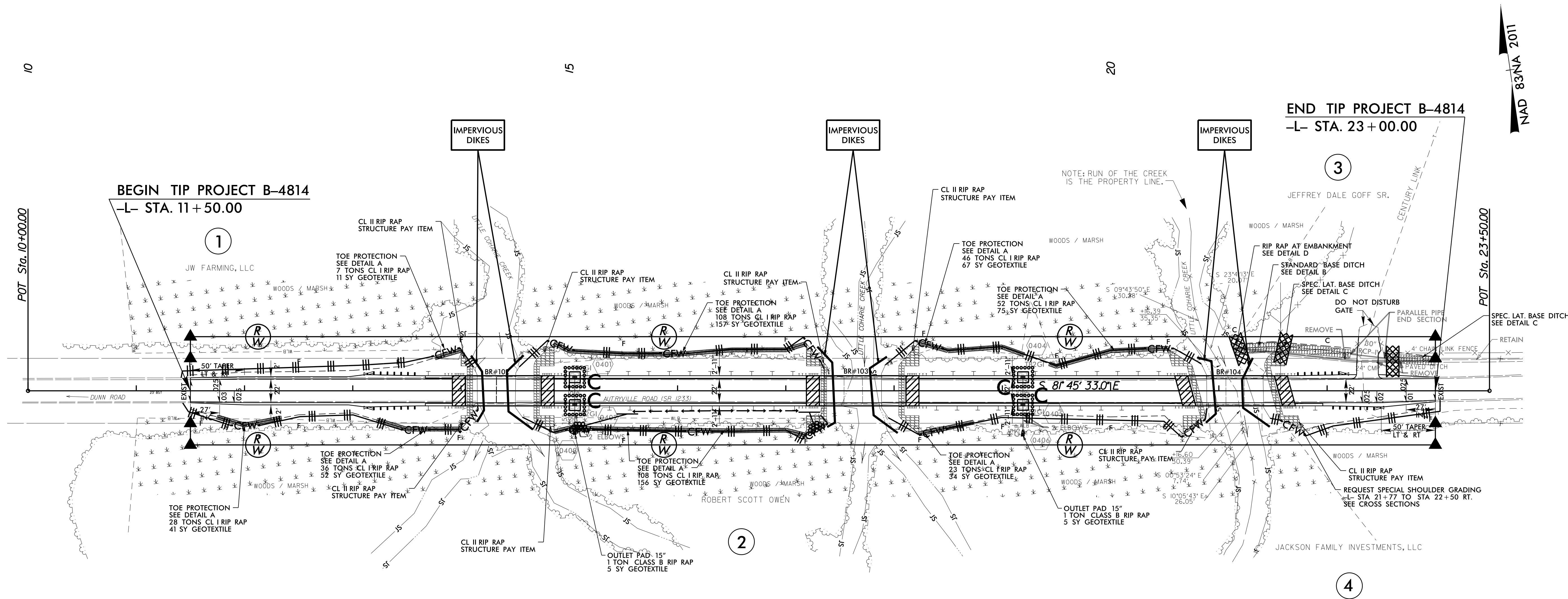
CLEARING AND GRUBBING
EROSION CONTROL FOR
CONSTRUCTION SHEET 4

NOTE:
PLACE TEMPORARY ROCK SEDIMENT DAMS TYPE - B AND TEMPORARY ROCK SILT CHECKS TYPE - A AT DRAINAGE OUTLETS.

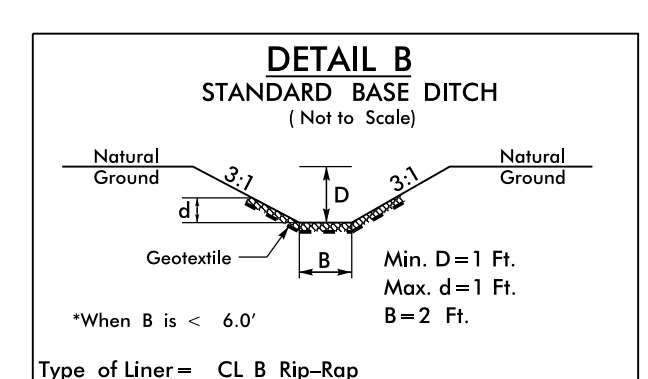
8/17/99
20-SEP-2016 07:53 D:\projects\B-4814-EC.psh_4.dgn
R:\env\m\p\p\B-4814-EC-4.dgn

PROJECT REFERENCE NO.	SHEET NO.
B-4814	EC-5/CONST.4
RW SHEET NO.	
ROADWAY DESIGN ENGINEER	HYDRAULICS ENGINEER

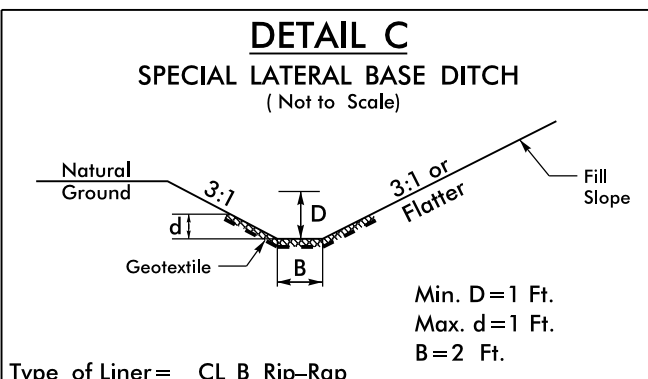
NOTE: UTILIZE SPECIAL STILLING BASIN(S) AS STILLING BASIN WHERE APPLICABLE.



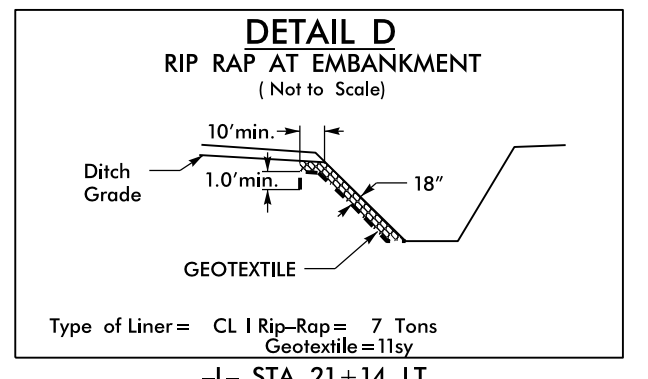
- L- STA. 11+75 TO STA. 12+33 RT.
- L- STA. 13+22 TO STA. 14+00 RT.
- L- STA. 13+85 TO STA. 14+00 LT.
- L- STA. 14+86 TO STA. 17+19 LT.
- L- STA. 14+86 TO STA. 17+19 RT.
- L- STA. 18+23 TO STA. 19+20 LT.
- L- STA. 18+23 TO STA. 18+73 RT.
- L- STA. 19+43 TO STA. 20+52 LT.



- L- STA. 21+14 TO STA. 21+57 LT., S=4.22%, DDE=8 CY, CL B Rip-Rap=17 Tons, Geotextile=38sy



- L- STA. 21+57 TO STA. 23+00 LT., CL B Rip-Rap= 57 Tons, Geotextile=127sy



- L- STA. 21+14 LT.

Place Matting for Erosion Control on Slopes Adjacent to Permitted Wetlands as Work Allows.

8/17/99
20-SEP-2016 07:54 D:\s\p\B-4814-EC.psh_4.dgn
R:\env\m\p\B-4814-EC.psh_4.dgn
R:\env\m\p\B-4814-EC.psh_4.dgn