

FOUNDATION LAYOUT

(DIMENSIONS LOCATING PILES ARE SHOWN TO CENTERLINE OF PILES)

NOTES

FOR PILES, SEE GEOTECHNICAL SPECIAL PROVISIONS AND SECTION 450 OF THE STANDARD SPECIFICATIONS.

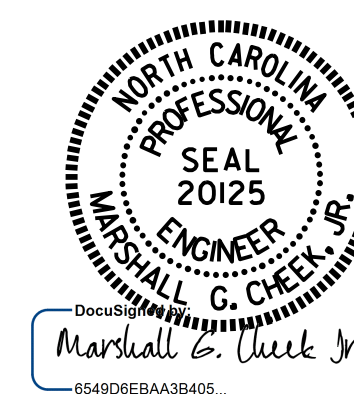
PILES AT END BENT No. 1 AND END BENT No. 2 ARE DESIGNED FOR A FACTORED RESISTANCE OF 100 TONS PER PILE.

DRIVE PILES AT END BENT No. 1 AND END BENT No. 2 TO A REQUIRED DRIVING RESISTANCE OF 170 TONS PER PILE.

TESTING PILES WITH THE PDA DURING DRIVING, RESTRIKING OR REDRIVING MAY BE REQUIRED. THE ENGINEER WILL DETERMINE THE NEED FOR PDA TESTING. FOR PDA TESTING, SEE SECTION 450 OF THE STANDARD SPECIFICATIONS.

PROJECT NO. B-4814
SAMPSON COUNTY
 STATION: 14+39.00 -L-

SHEET 2 OF 3



STATE OF NORTH CAROLINA
 DEPARTMENT OF TRANSPORTATION
 RALEIGH

GENERAL DRAWING
 FOR BRIDGE OVER
 LITTLE COHARIE CREEK
 ON SR 1233
 BETWEEN SR 1406 & SR 1412

DOCUMENT NOT CONSIDERED
 FINAL UNLESS ALL
 SIGNATURES COMPLETED

REVISIONS						SHEET NO.
NO.	BY:	DATE:	NO.	BY:	DATE:	
1			3			S1-2
2			4			TOTAL SHEETS 46

DRAWN BY : B. N. BARODAWALA/MEP DATE : 7-2-15
 CHECKED BY : T.L.CLELLAND DATE : 1-8-16

STR. #1