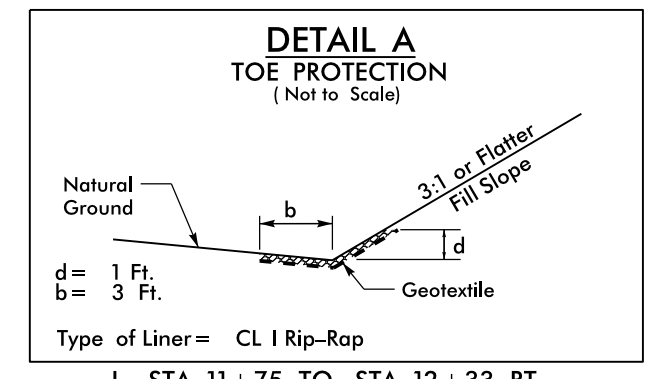
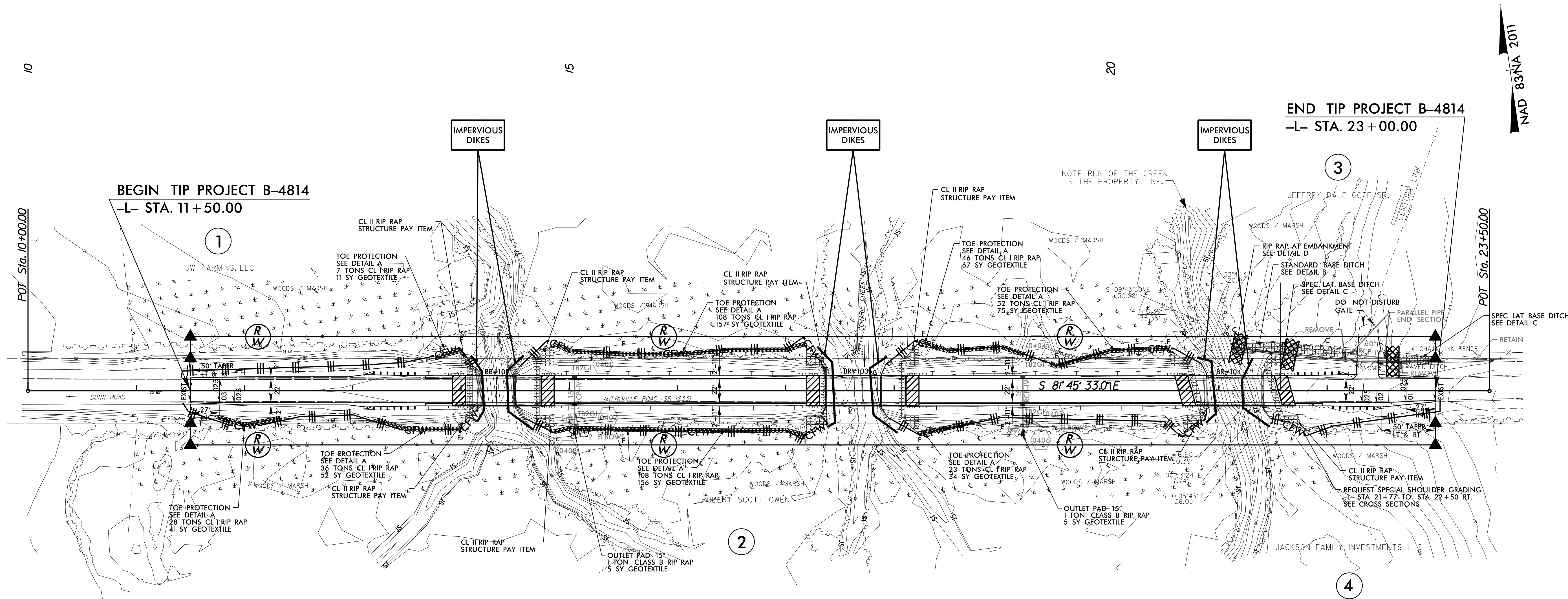
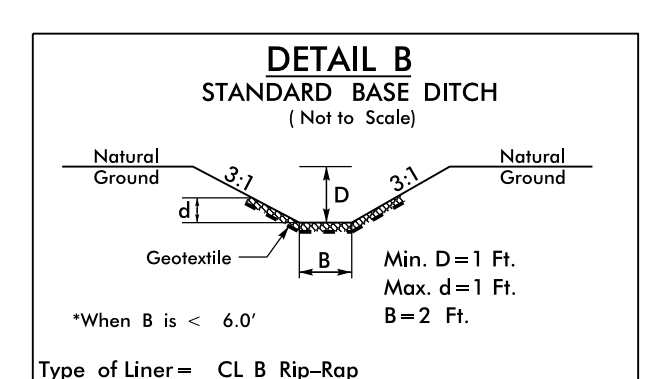


PROJECT REFERENCE NO.	SHEET NO.
B-4814	EC-4/CONST.4
RW SHEET NO.	
ROADWAY DESIGN ENGINEER	HYDRAULICS ENGINEER

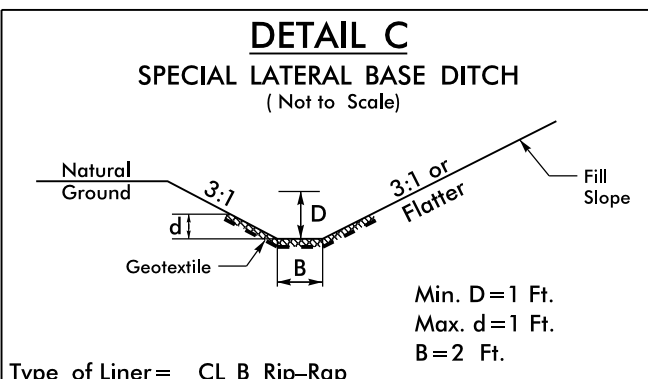
NOTE:  
UTILIZE SPECIAL STILLING BASIN(S) AS STILLING BASIN WHERE APPLICABLE.



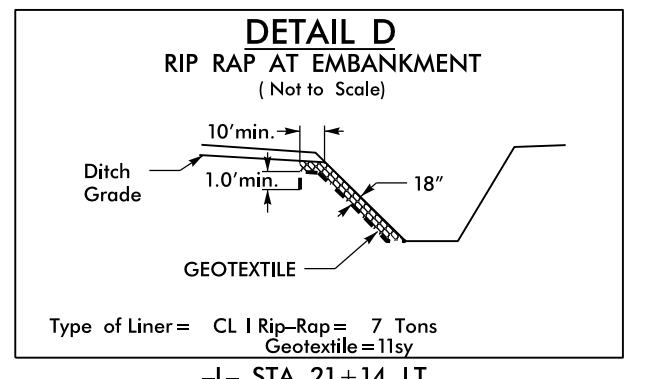
- L- STA. 11+75 TO STA. 12+33 RT.
- L- STA. 13+22 TO STA. 14+00 RT.
- L- STA. 13+85 TO STA. 14+00 LT.
- L- STA. 14+86 TO STA. 17+19 LT.
- L- STA. 14+86 TO STA. 17+19 RT.
- L- STA. 18+23 TO STA. 19+20 LT.
- L- STA. 18+23 TO STA. 18+73 RT.
- L- STA. 19+43 TO STA. 20+52 LT.



- L- STA. 21+14 TO STA. 21+57 LT., S=4.22%, DDE=8 CY, CL B Rip-Rap=17 Tons, Geotextile=38sy



- L- STA. 21+57 TO STA. 23+00 LT., CL B Rip-Rap= 57 Tons, Geotextile=127sy



- L- STA. 21+14 LT.

CLEARING AND GRUBBING  
EROSION CONTROL FOR  
CONSTRUCTION SHEET 4

NOTE:  
PLACE TEMPORARY ROCK SEDIMENT DAMS TYPE - B AND TEMPORARY ROCK SILT CHECKS TYPE - A AT DRAINAGE OUTLETS.

8/17/99  
20-SEP-2016 07:53 D:\projects\B-4814-EC.psh\_4.dgn  
R:\env\m\p\p\B-4814-EC-4.dgn