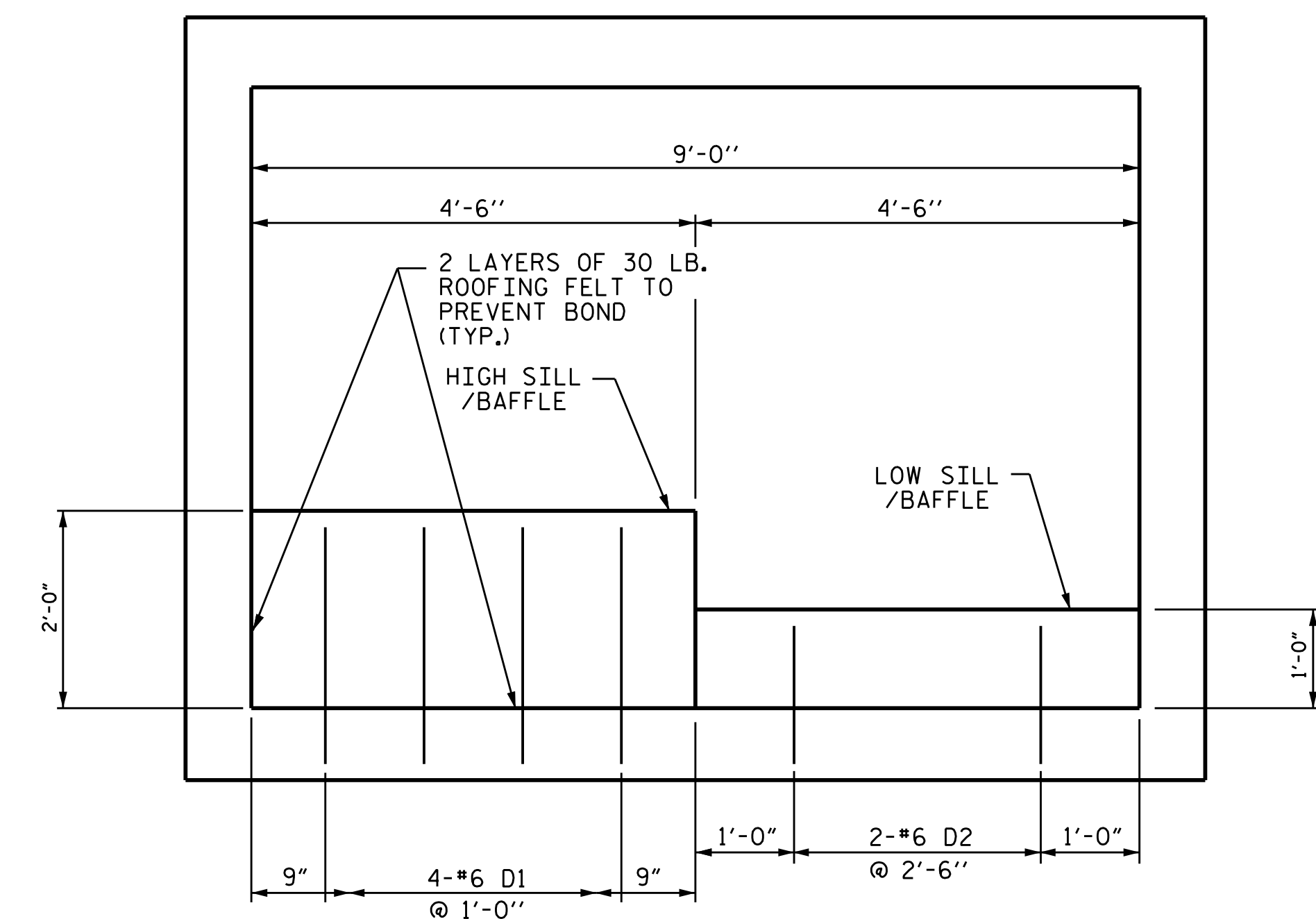
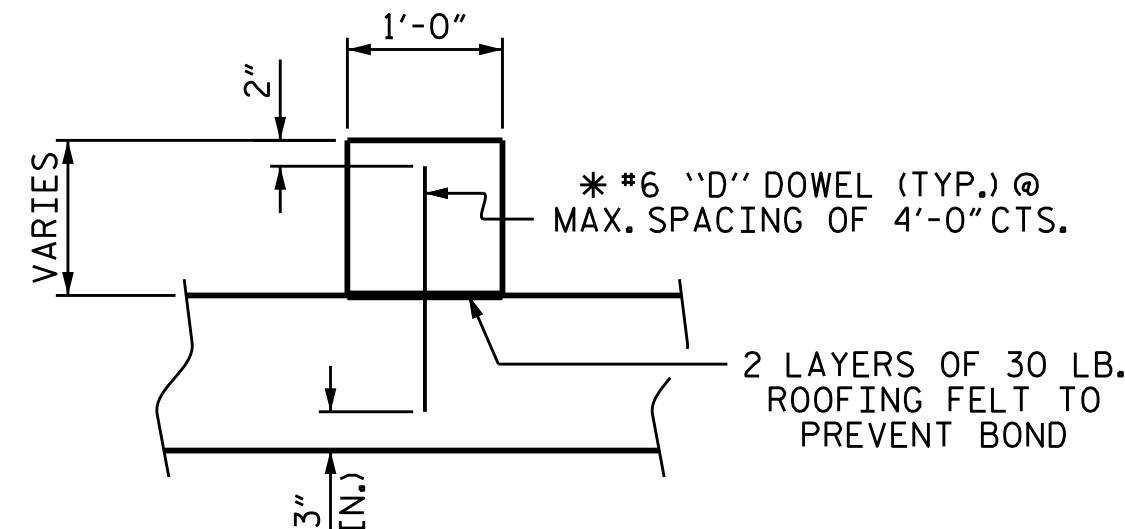


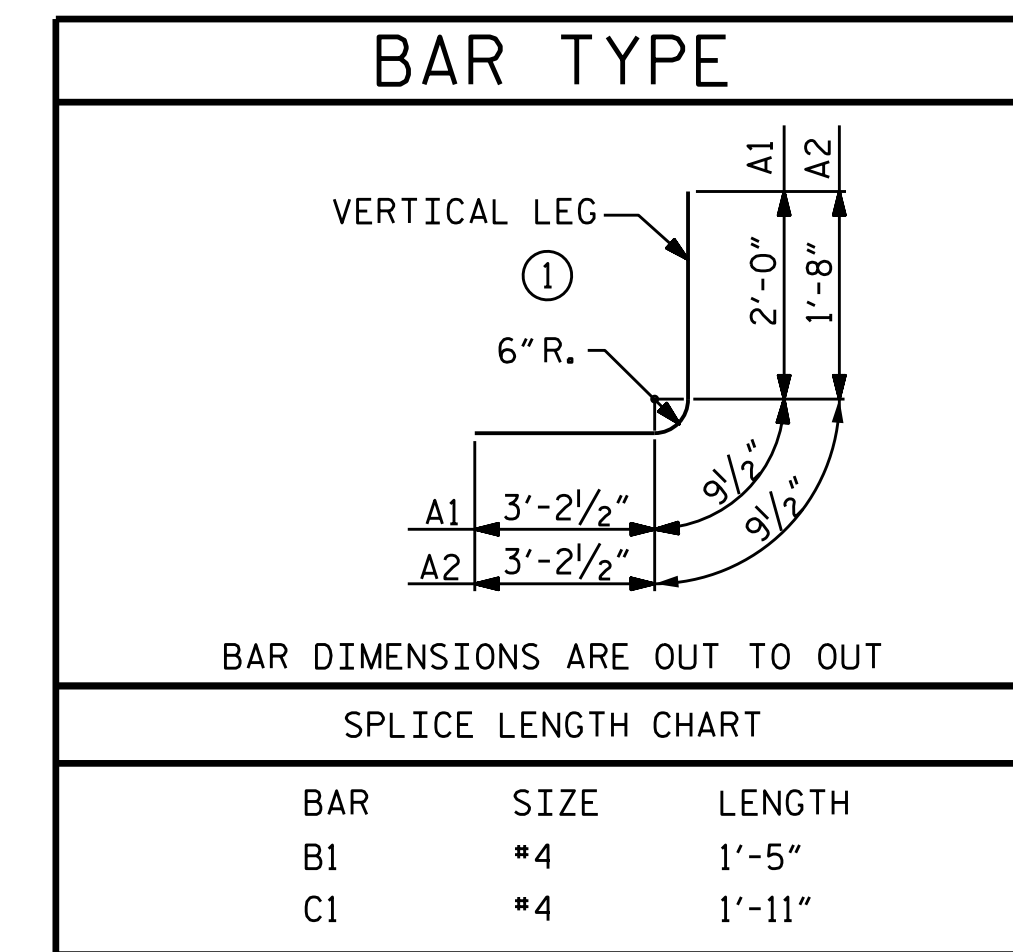
PLAN OF SILL/BAFFLE LOCATIONS  
(STAGE I & II)



ELEVATION  
CULVERT SILL DETAILS  
(LOOKING DOWNSTREAM)



SECTION THRU SILL/BAFFLE



NOTES

- MATERIAL EXCAVATED FROM THE EXISTING BED SHALL BE STOCKPILED FOR USE IN THE PROPOSED CULVERT AND SHALL PROVIDE A CONTINUOUS LOW FLOW CHANNEL AS SHOWN. THE MATERIAL SHALL BE NATURAL STONE WITH A GRADATION SIZE SIMILAR TO THAT OF CLASS B RIP RAP. STONES LARGER THAN 6 INCHES SHALL NOT BE PLACED WITHIN THE LOW FLOW CHANNEL. BED MATERIAL SHALL BE SUBJECT TO APPROVAL BY THE ENGINEER, AND MAY BE SUBJECT TO PERMIT CONDITIONS.
- THE STOCKPILED MATERIAL SHALL BE PLACED TO PROVIDE A DEPTH OF 1 FOOT IN LOW FLOW CHANNEL, AND 2 FEET IN THE HIGH FLOW CHANNEL.
- THE TOP OF BED MATERIAL IN THE LOW FLOW CHANNEL SHOULD MATCH THE STREAM BED ELEVATION.
- BED MATERIAL SHALL BE SUPPLEMENTED BY CLASS B RIP RAP AS NECESSARY IN THE HIGH FLOW CHANNEL ONLY.
- THE ENTIRE COST OF WORK REQUIRED TO PLACE THE EXCAVATED MATERIAL AS SHOWN ON THE PLANS SHALL BE INCLUDED IN THE CONTRACT LUMP SUM PRICE BID FOR CULVERT EXCAVATION.
- THE ENTIRE COST OF WORK REQUIRED TO CONSTRUCT THE SILLS/BAFFLES SHALL BE INCLUDED IN THE VARIOUS PAY ITEMS.

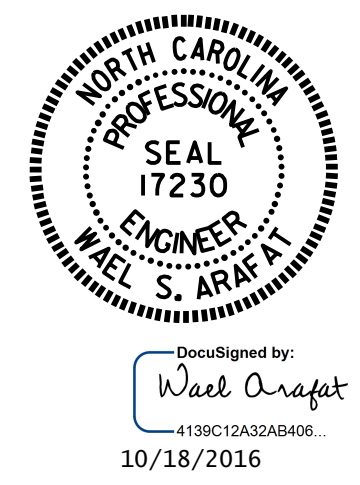
BAR SCHEDULE

STAGE I					
BAR	NO.	SIZE	TYPE	LENGTH	WEIGHT
A1	138	#4	1	6'-0"	553
A2	138	#4	1	5'-8"	522
A100	69	#5	STR	9'-11"	714
A200	69	#6	STR	9'-11"	1028
B1	70	#4	STR	7'-10"	366
B2	138	#4	STR	6'-4"	584
C1	76	#4	STR	19'-2"	973
D1	8	#6	STR	2'-3"	27
D2	4	#6	STR	1'-3"	8
G1	2	#4	STR	10'-0"	13
REINFORCING STEEL =					4788 LBS.

BAR SCHEDULE					
STAGE II					
BAR	NO.	SIZE	TYPE	LENGTH	WEIGHT
A1	118	#4	1	6'-0"	473
A2	118	#4	1	5'-8"	447
A100	59	#5	STR	9'-11"	610
A200	59	#6	STR	9'-11"	879
B1	60	#4	STR	7'-10"	314
B2	118	#4	STR	6'-4"	499
C2	38	#4	STR	29'-2"	740
D1	4	#6	STR	2'-3"	14
D2	2	#6	STR	1'-3"	4
G1	2	#4	STR	10'-0"	13
REINFORCING STEEL =					3993 LBS.

PROJECT NO. R-4753  
JACKSON COUNTY  
 STATION: 142+79.00 -L-

SHEET 5 OF 7  
 STATE OF NORTH CAROLINA  
 DEPARTMENT OF TRANSPORTATION  
 RALEIGH  
 SINGLE 9 FT. X 7 FT.  
 CONCRETE BOX CULVERT  
 90°-00'-00" SKEW



DRAWN BY : V.X. NGUYEN DATE : 8-3-16  
 CHECKED BY : H.T. BARBOUR DATE : 8-8-16  
 DESIGN ENGINEER OF RECORD: A. M. LEE DATE : 9-16

DOCUMENT NOT CONSIDERED  
 FINAL UNLESS ALL  
 SIGNATURES COMPLETED

REVISIONS				SHEET NO.	
NO.	BY:	DATE:	NO.	BY:	DATE:
1			3		
2			4		

TOTAL SHEETS: 14