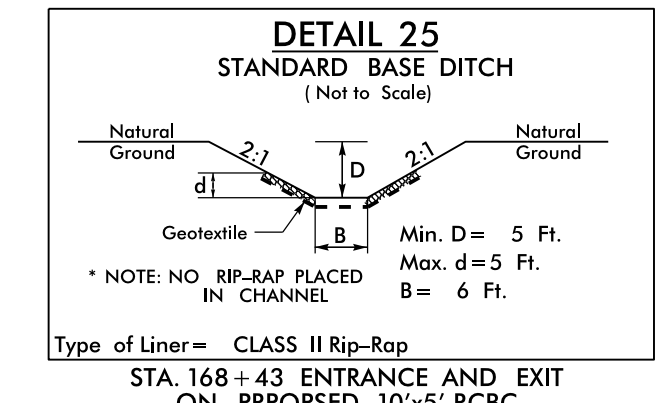
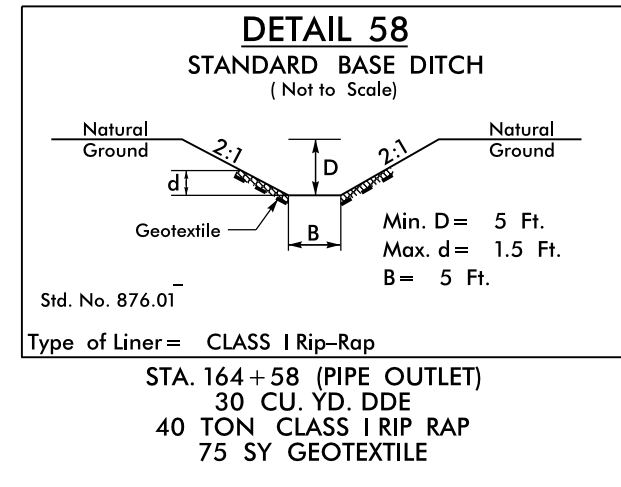
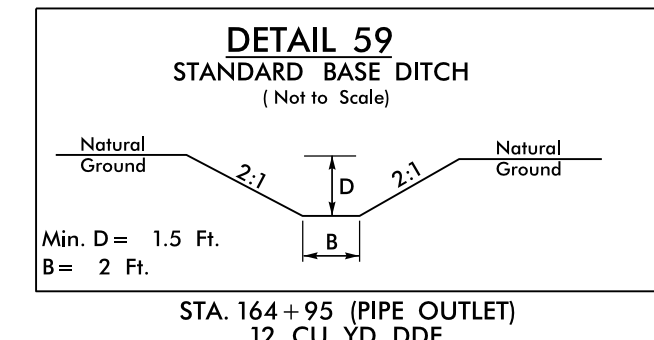
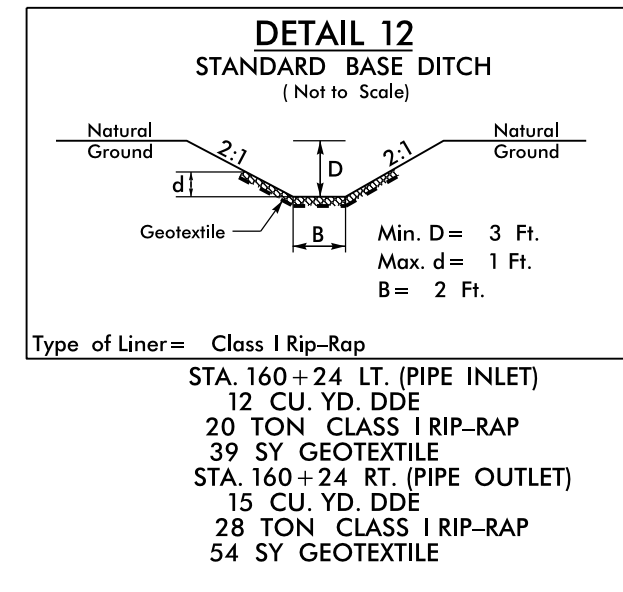
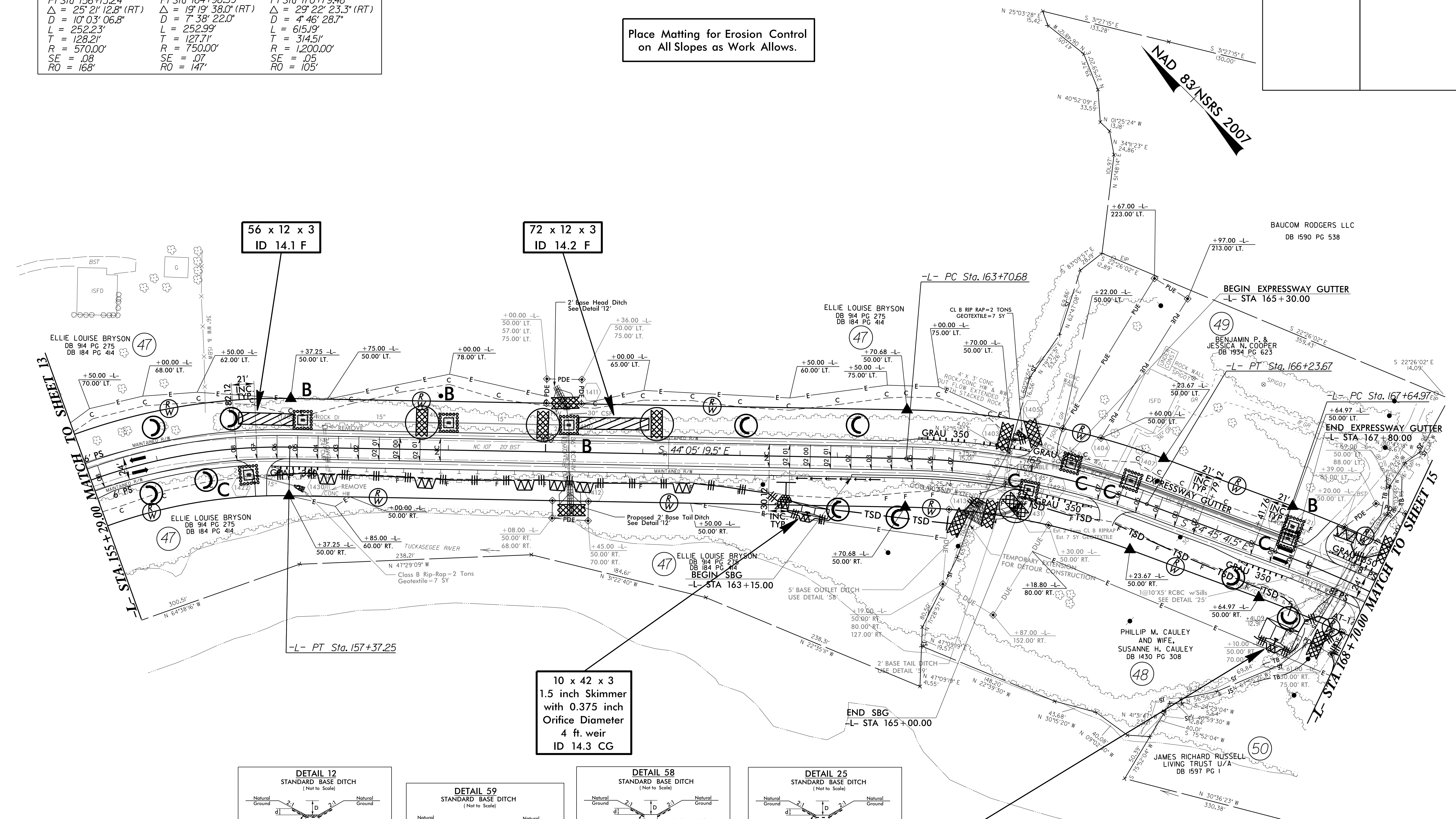


PROJECT REFERENCE NO.	SHEET NO.
R-4753	EC-32/CONST.14
RW SHEET NO.	
ROADWAY DESIGN ENGINEER	HYDRAULICS ENGINEER

-L-		
PI Sta 156+13.24 Δ = 25° 21' 12.8" (RT) D = 10° 03' 06.8" L = 252.23' T = 128.21' R = 570.00' SE = .08 RO = 168'	PI Sta 164+98.39 Δ = 19° 19' 38.0" (RT) D = 7° 38' 22.0" L = 252.99' T = 127.71' R = 750.00' SE = .07 RO = 147'	PI Sta 170+79.48 Δ = 29° 22' 23.3" (RT) D = 4° 46' 28.7" L = 615.19' T = 314.51' R = 1,200.00' SE = .05 RO = 105'

Place Matting for Erosion Control on All Slopes as Work Allows.



Note: All Driveway Radii are 20' Unless Otherwise Noted
 Note: All Proposed Guardrail to Use Weathered Steel Unless Otherwise Noted
 SBG = SHOULDER BERM GUTTER
 SEE SHEET 24 FOR -L- PROFILE

5/14/99
R:\E-12-SEP-2016 0959...
R:\E-12-SEP-2016 0959...
R:\E-12-SEP-2016 0959...