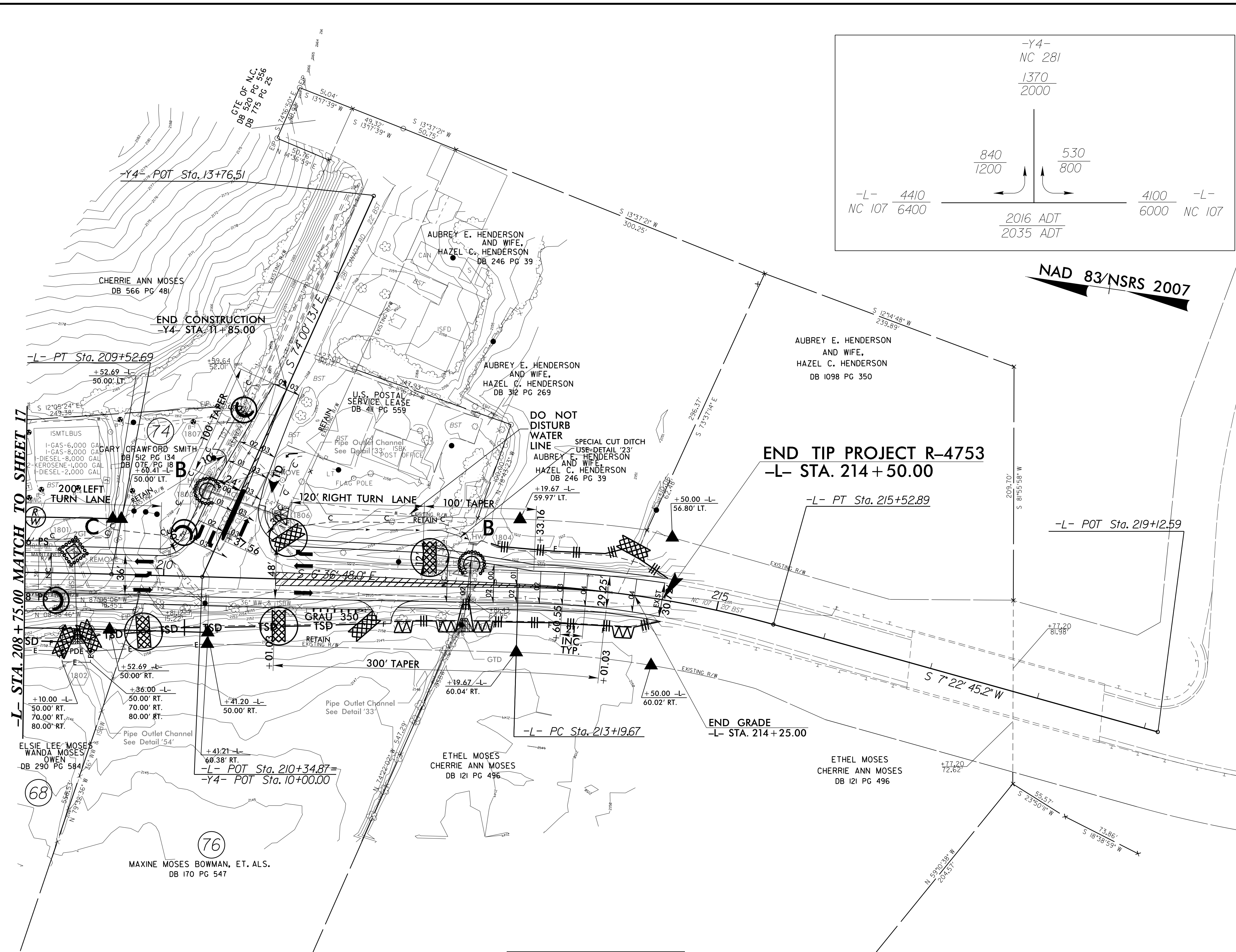
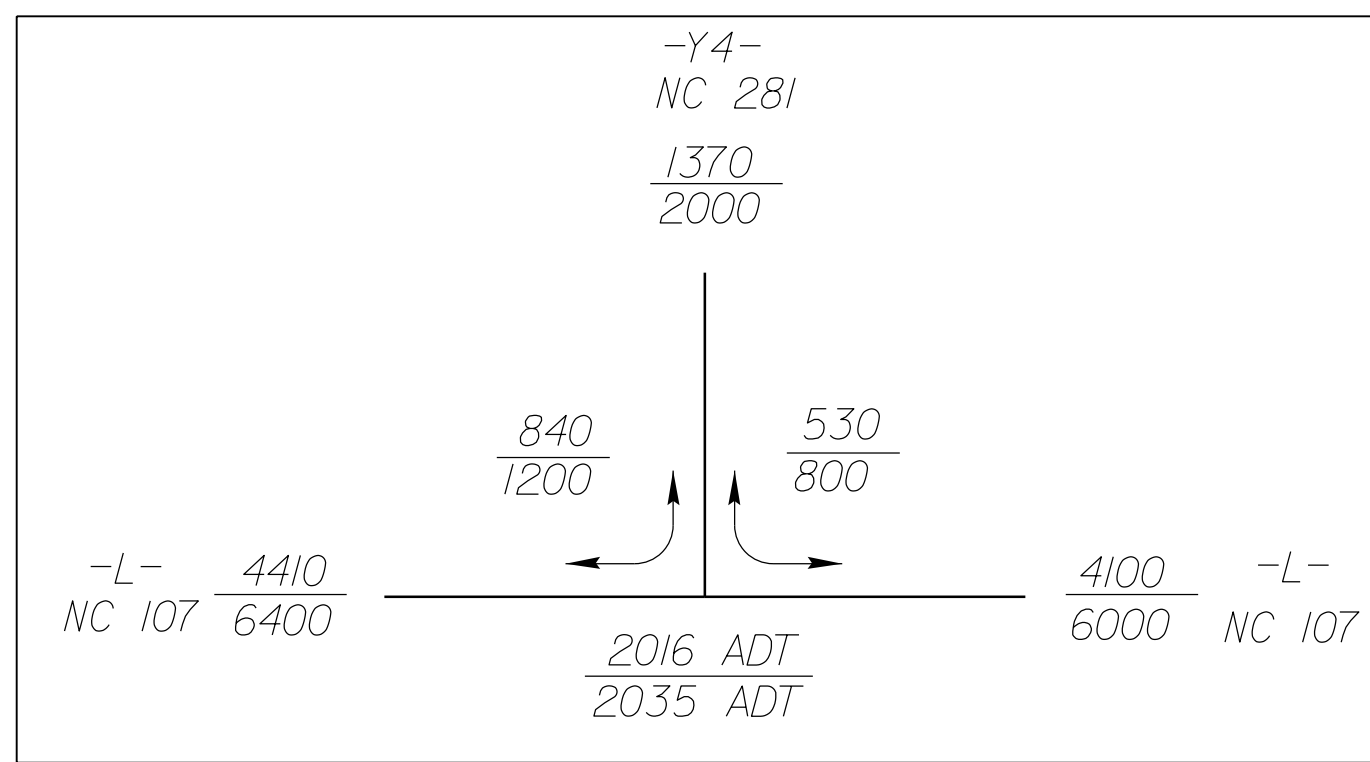


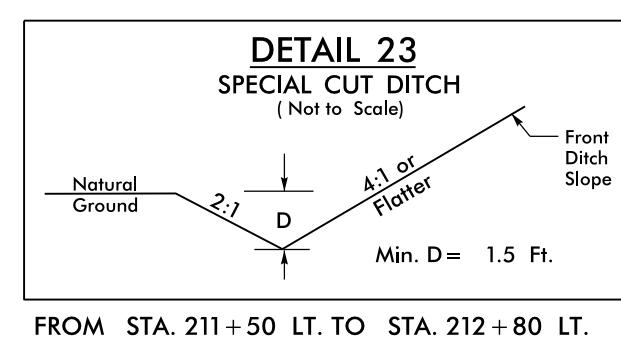
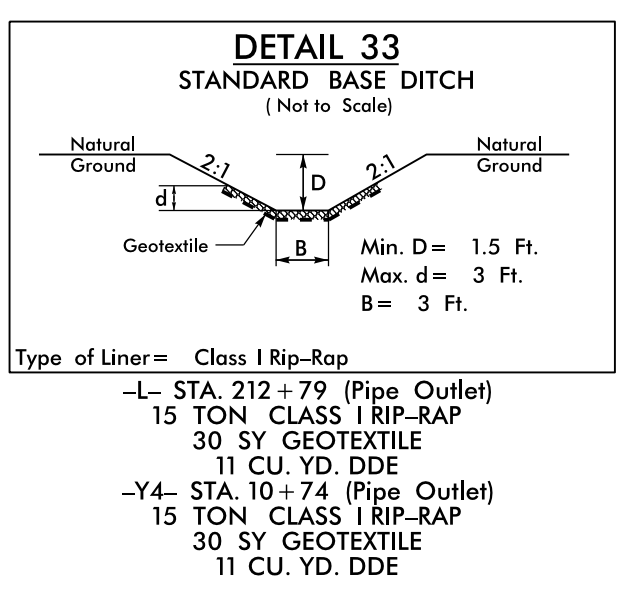
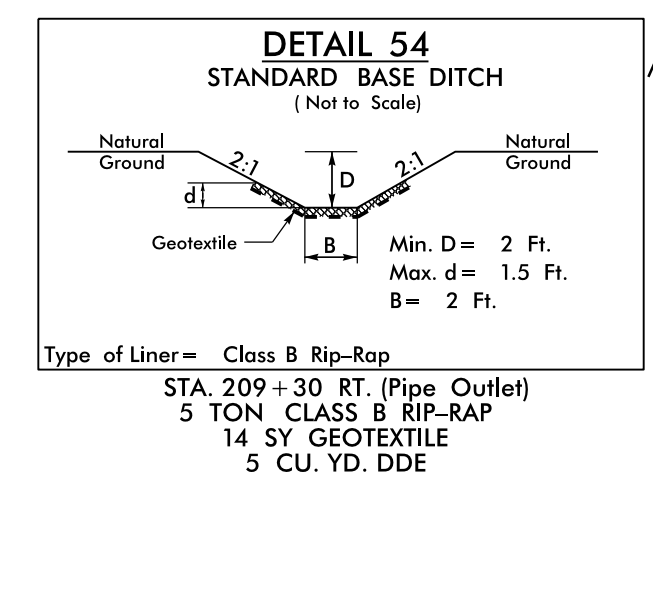
PROJECT REFERENCE NO.	SHEET NO.
R-4753	EC-21/CONST.18
RW SHEET NO.	
ROADWAY DESIGN ENGINEER	HYDRAULICS ENGINEER



-L- STA. 208+75.00 MATCH TO SHEET 17

NAD 83/NSRS 2007

END TIP PROJECT R-4753  
-L- STA. 214+50.00



-L-	-L-
PI Sta 205+28.46	PI Sta 214+36.86
$\Delta = 9' 44' 46.4''$ (RT)	$\Delta = 13' 59' 33.2''$ (RT)
$D = 1' 08' 45.3''$	$D = 5' 59' 58.4''$
$L = 850.52'$	$L = 233.23'$
$T = 426.29'$	$T = 117.20'$
$R = 5,000.00'$	$R = 955.00'$
$SE = NC$	$SE = Exist (.04)$

CLEARING AND GRUBBING  
EROSION CONTROL FOR  
CONSTRUCTION SHEET 18

NOTE:  
PLACE TEMPORARY ROCK SEDIMENT DAMS TYPE - B  
AND TEMPORARY ROCK SILT CHECKS TYPE - A AT  
DRAINAGE OUTLETS.

PROP. CONC. ISLAND  
 PROP. PAINT STRIPING  
 GTD = GRADE TO DRAIN  
 SEE SHEETS 25 & 26 FOR -L- PROFILE  
 SEE SHEET 28 FOR -Y4- PROFILE

Note: All Driveway Radii are 20' Unless Otherwise Noted  
 Note: All Proposed Guardrail to Use Weathered Steel Unless Otherwise Noted  
 Note: Transition From 6' Paved Shoulder To Existing -L- Sta. 213+51.03 To Sta. 214+01.03 Lt./Rt.

5/14/99  
09-SEP-2016 15:50  
R:\E\Projects\2016\1550\Drawings\EC-21\CONST.18.dgn  
11/1/2016 10:19:56 AM