

52899

PIPE HYDRAULIC DATA
Structure No.1602 -L- Sta.186+52

DRAINAGE AREA	= 13	AC
DESIGN FREQUENCY	= 50	YRS
DESIGN DISCHARGE	= 27	CFS
DESIGN HW ELEVATION	= 2168.49	FT
100 YEAR DISCHARGE	= 29	CFS
100 YEAR HW ELEVATION	= 2168.61	FT
OVERTOPPING FREQUENCY	= 100+	YRS
OVERTOPPING DISCHARGE	= 63.5	CFS
OVERTOPPING ELEVATION	= 2171.4	FT

PIPE HYDRAULIC DATA
Structure No.1603 -L- Sta.190+00

DRAINAGE AREA	= 6.2	AC
DESIGN FREQUENCY	= 50	YRS
DESIGN DISCHARGE	= 13	CFS
DESIGN HW ELEVATION	= 2173.15	FT
100 YEAR DISCHARGE	= 14.1	CFS
100 YEAR HW ELEVATION	= 2173.25	FT
OVERTOPPING FREQUENCY	= 100+	YRS
OVERTOPPING DISCHARGE	= 24	CFS
OVERTOPPING ELEVATION	= 2175.1	FT

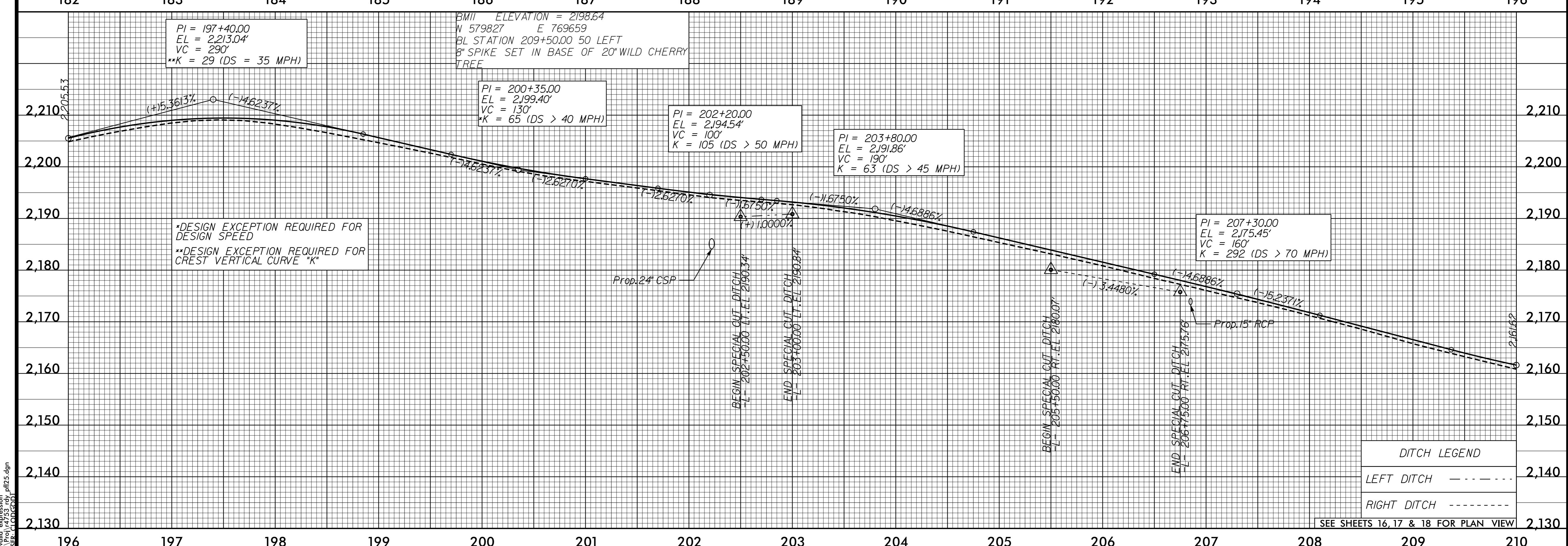
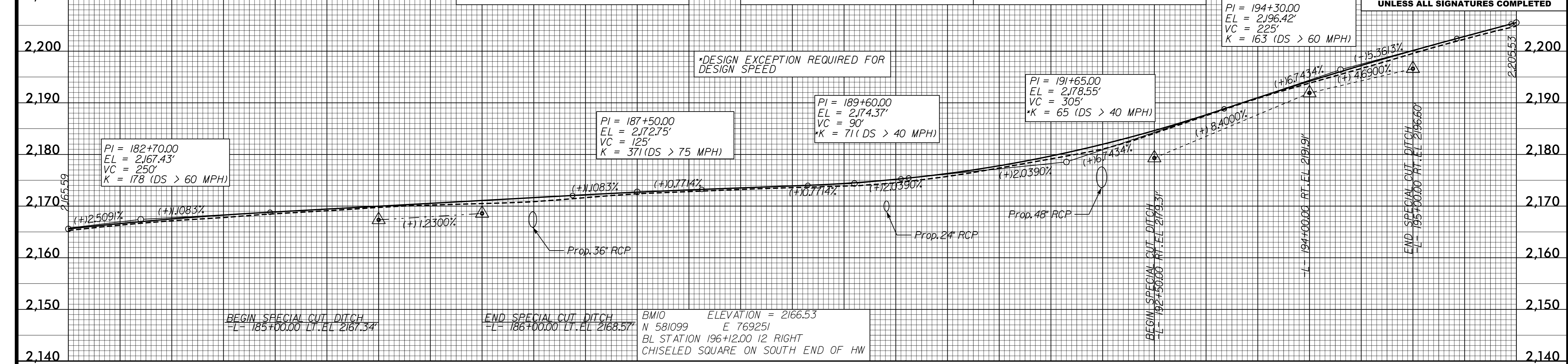
PIPE HYDRAULIC DATA
Structure No.1607 -L- Sta.192+08

DRAINAGE AREA	= 57	AC
DESIGN FREQUENCY	= 50	YRS
DESIGN DISCHARGE	= 80	CFS
DESIGN HW ELEVATION	= 2178.8	FT
100 YEAR DISCHARGE	= 97	CFS
100 YEAR HW ELEVATION	= 2197.6	FT
OVERTOPPING FREQUENCY	= 500+	YRS
OVERTOPPING DISCHARGE	= 171	CFS
OVERTOPPING ELEVATION	= 2181.46	FT



PROJECT REFERENCE NO.	R-4753	SHEET NO.	25
ROADWAY DESIGN ENGINEER	DAVID J. CLODDO	HYDRAULICS ENGINEER	STEPHEN R. MORGAN
NORTH CAROLINA PROFESSIONAL ENGINEER SEAL 035683		NORTH CAROLINA PROFESSIONAL ENGINEER SEAL 022100	
DAVID J. CLODDO, PE		STEPHEN R. MORGAN, PE	

DOCUMENT NOT CONSIDERED FINAL UNLESS ALL SIGNATURES COMPLETED



Invalid expression in user-defined function.