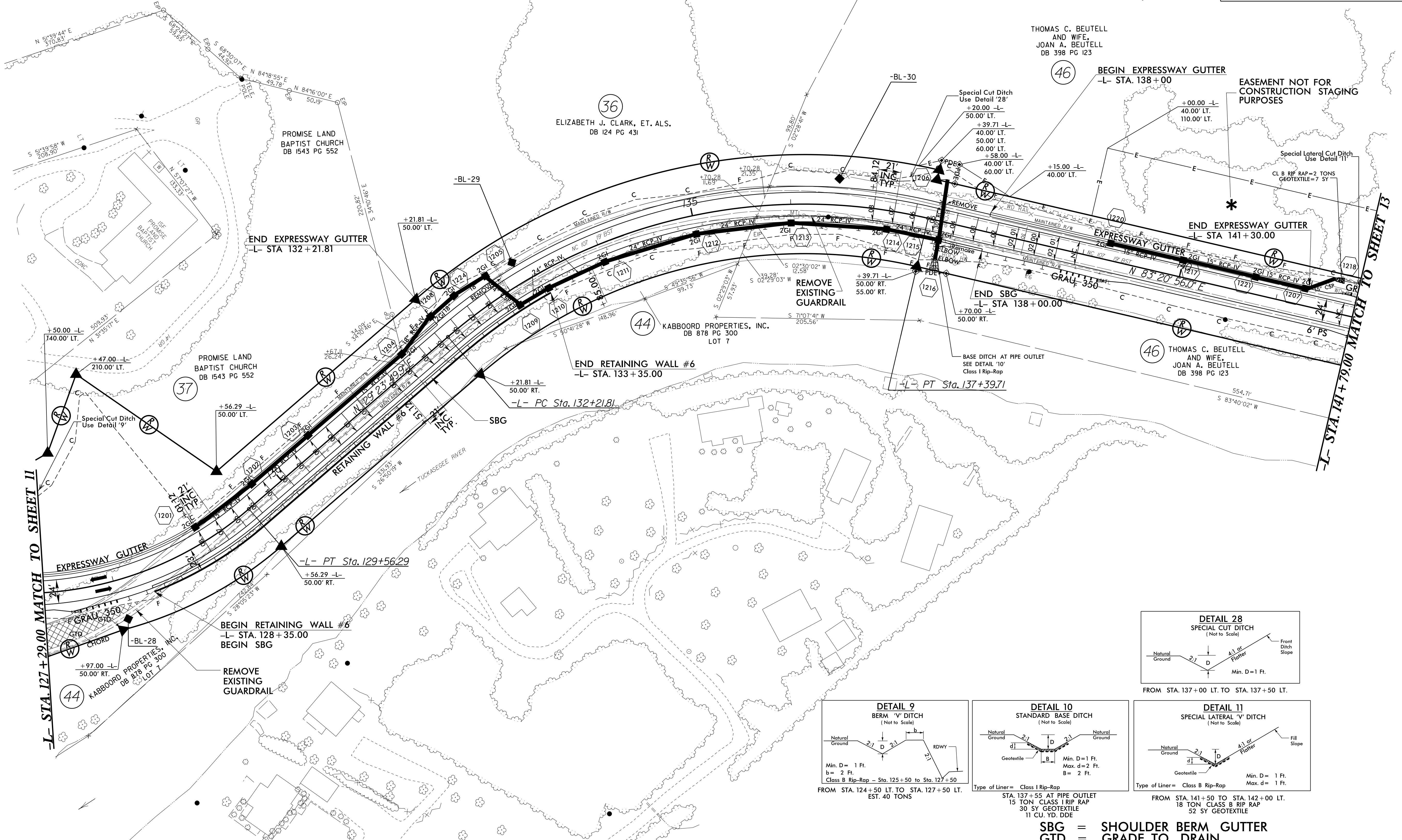
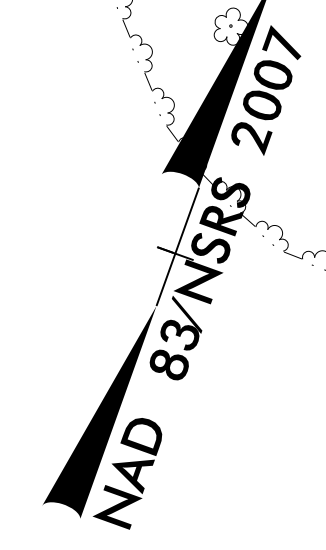


PROJECT REFERENCE NO. R-4753		SHEET NO. 12	
RW SHEET NO.			
ROADWAY DESIGN ENGINEER		HYDRAULICS ENGINEER	
David J. Cloddo, PE		Stephen R. Morgan, PE	
DOCUMENT NOT CONSIDERED FINAL UNLESS ALL SIGNATURES COMPLETED			

-L-	
PI Sta 128+00.46	PI Sta 135+01.76
$\Delta = 114^{\circ} 22' 34.4"$ (LT)	$\Delta = 53^{\circ} 57' 06.0"$ (RT)
D = 16' 22" 12.8"	D = 10' 25" 02.7"
L = 698.68'	L = 517.90'
T = 542.85'	T = 279.95'
*R = 350.00' (35mph)	*R = 550.00' (40mph)
SE = .08	SE = .08
RO = 168'	RO = 168'

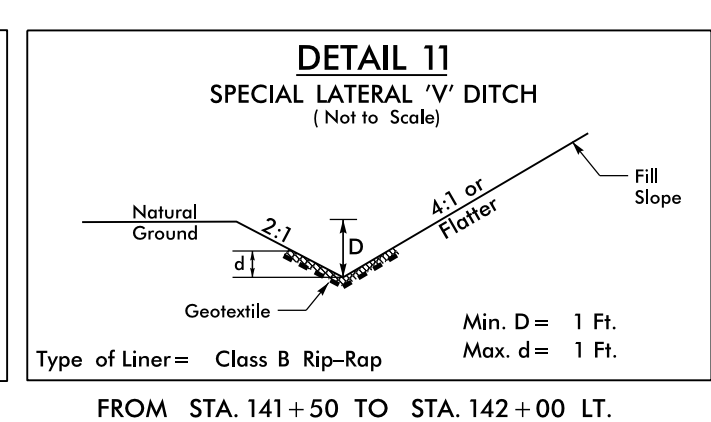
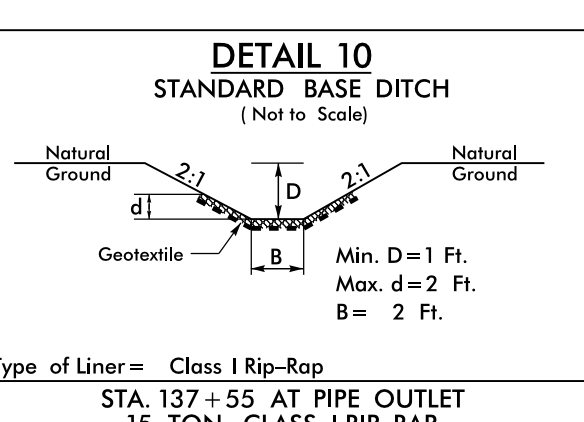
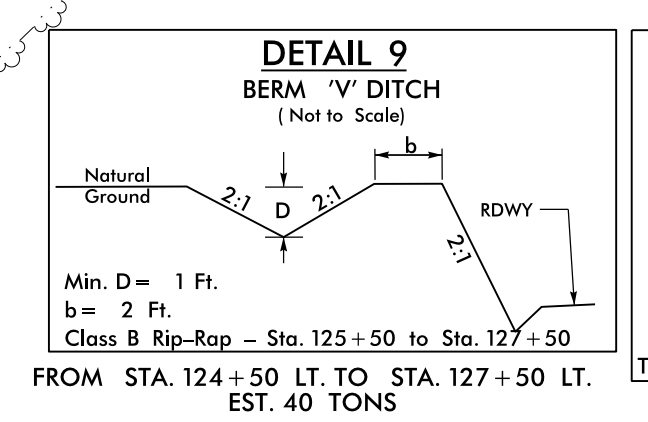
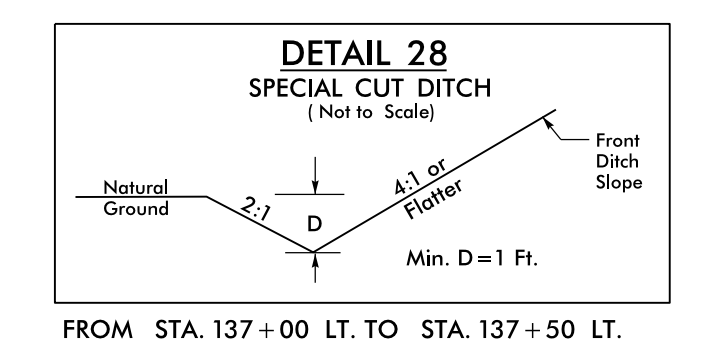
*Design Exception Required For Design Speed
 ** Design Exception Required For Horizontal Curve Radius



REVISIONS

-L- STA. 127 + 29.00 MATCH TO SHEET 11

-L- STA. 141 + 79.00 MATCH TO SHEET 13



SBG = SHOULDER BERM GUTTER
 GTD = GRADE TO DRAIN
 SEE SHEET 23 FOR -L- PROFILE
 SEE SHEETS W-1 THRU W-8 FOR RETAINING WALL PLANS

Note: All Proposed Guardrail to Use Weathered Steel Unless Otherwise Noted

Invalid Expressions: 53_Rdu_psh12.dgn
 JUSEE: 11/06/2016