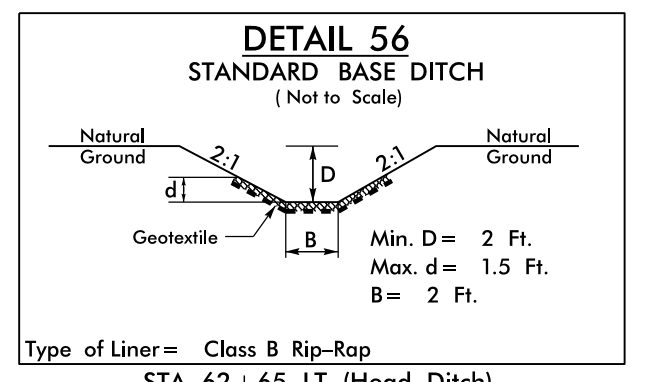
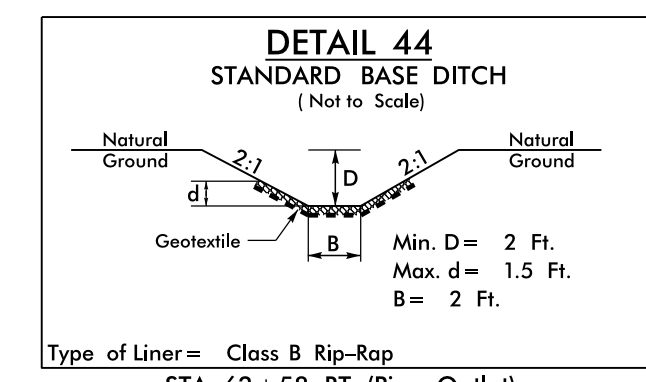
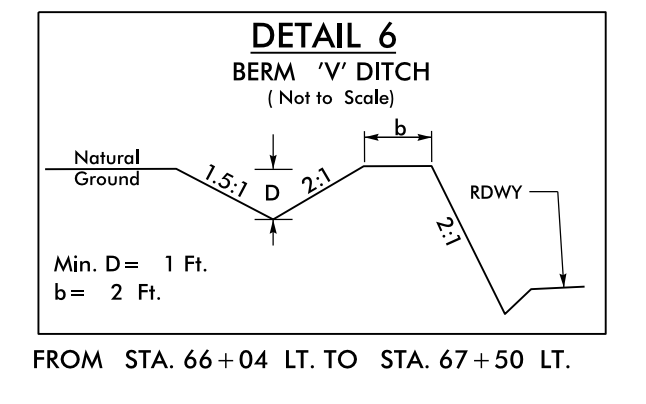
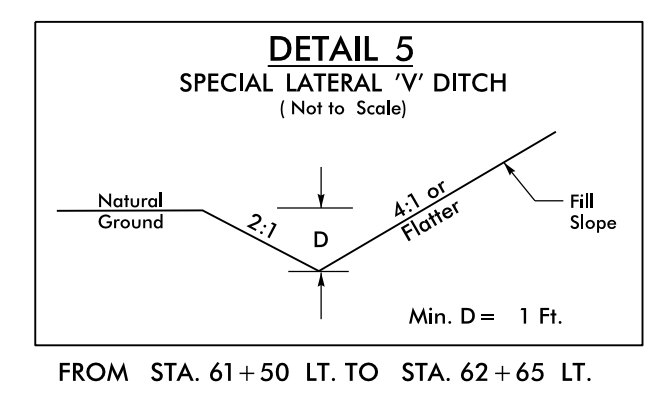
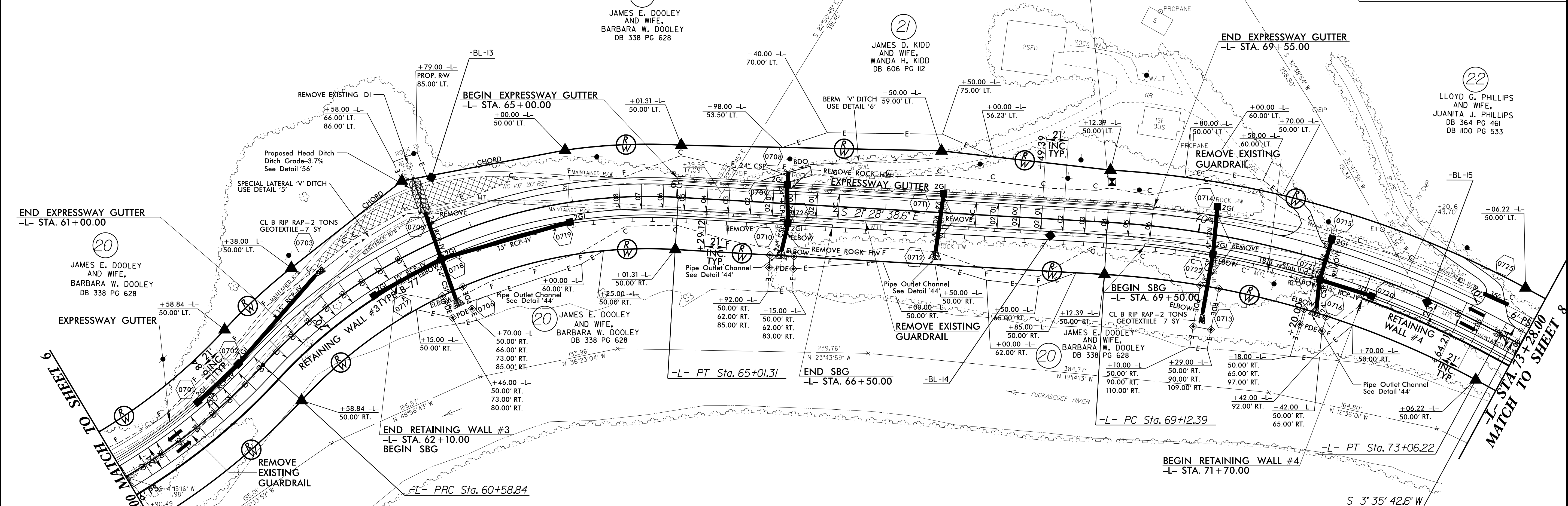


PROJECT REFERENCE NO. R-4753		SHEET NO. 7	
RW SHEET NO.			
ROADWAY DESIGN ENGINEER		HYDRAULICS ENGINEER	
DOCUMENT NOT CONSIDERED FINAL UNLESS ALL SIGNATURES COMPLETED			

-L-		
PI Sta 57+94.02	PI Sta 62+95.74	PI Sta 71+12.51
$\Delta = 56^{\circ} 24' 55.1''$ (LT)	$\Delta = 50^{\circ} 42' 11.3''$ (RT)	$\Delta = 25^{\circ} 04' 21.2''$ (RT)
D = 9' 41' 56.1"	D = 11' 27' 31.5"	D = 6' 21' 58.3"
L = 581.67'	L = 442.48'	L = 393.84'
T = 316.86'	T = 236.91'	T = 200.12'
R = 590.74'	*R = 500.02' (40mph)	R = 900.00'
	SE = .08	SE = .06
	RO = 168'	RO = 126'

\* Design Exception Required for Design Speed



- STA. 62+58 RT. (Pipe Outlet)
- 5 CY DDE, 14 SY Geotextile
- 5 Ton Class B Rip-Rap
- STA. 66+03 RT. (Pipe Outlet)
- 5 CY DDE, 14 SY Geotextile
- 5 Ton Class B Rip-Rap
- STA. 67+50 RT. (Pipe Outlet)
- 5 CY DDE, 14 SY Geotextile
- 5 Ton Class B Rip-Rap
- STA. 71+30 RT. (Pipe Outlet)
- 5 CY DDE, 14 SY Geotextile
- 5 Ton Class B Rip-Rap

- STA. 62+65 LT. (Head Ditch)
- 15 CY DDE
- 20 Ton Class B Rip-Rap
- 55 SY GEOTEXTILE

Note: All Driveway Radii are 20' Unless Otherwise Noted  
 Note: Tie all Driveways to the Right of Way Line. Follow the "Pavement Design for Driveways" Memo Dated March 18, 2002 or as Directed by the Engineer  
 Note: All Proposed Guardrail to Use Weathered Steel Unless Otherwise Noted

BDO = BERM DITCH OUTLET  
 SBG = SHOULDER BERM GUTTER  
 SEE SHEETS 20 & 21 FOR -L- PROFILE  
 SEE SHEETS W-1 THRU W-8 FOR RETAINING WALL PLANS

REVISIONS

Invalid expression: \\S3.Rd\psh07.dgn  
USER: N:\COM\N...