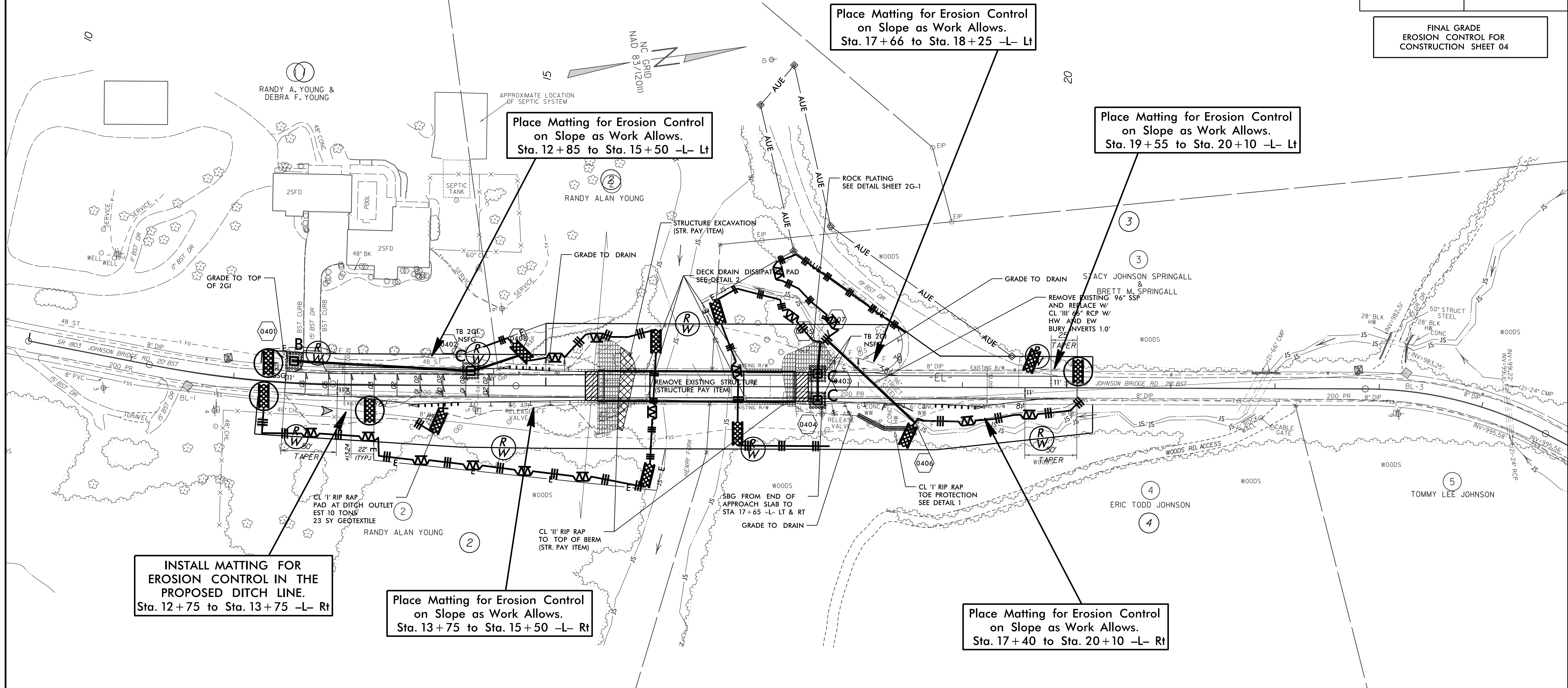


NOTES: ANY DEVIATION FROM OPTIONS GIVEN WILL REQUIRE PRIOR APPROVAL BY ENGINEER.

ADDITIONAL EROSION CONTROL DEVICES MAY NEED TO BE INSTALLED AS DIRECTED BY THE ENGINEER.

PROJECT REFERENCE NO. B-5398	SHEET NO. EC-06/CONST.04
RW SHEET NO.	
ROADWAY DESIGN ENGINEER	HYDRAULICS ENGINEER

FINAL GRADE  
EROSION CONTROL FOR  
CONSTRUCTION SHEET 04



Place Matting for Erosion Control on Slope as Work Allows.  
Sta. 12+85 to Sta. 15+50 -L- Lt

Place Matting for Erosion Control on Slope as Work Allows.  
Sta. 17+66 to Sta. 18+25 -L- Lt

Place Matting for Erosion Control on Slope as Work Allows.  
Sta. 19+55 to Sta. 20+10 -L- Lt

INSTALL MATTING FOR EROSION CONTROL IN THE PROPOSED DITCH LINE.  
Sta. 12+75 to Sta. 13+75 -L- Rt

Place Matting for Erosion Control on Slope as Work Allows.  
Sta. 13+75 to Sta. 15+50 -L- Rt

Place Matting for Erosion Control on Slope as Work Allows.  
Sta. 17+40 to Sta. 20+10 -L- Rt

