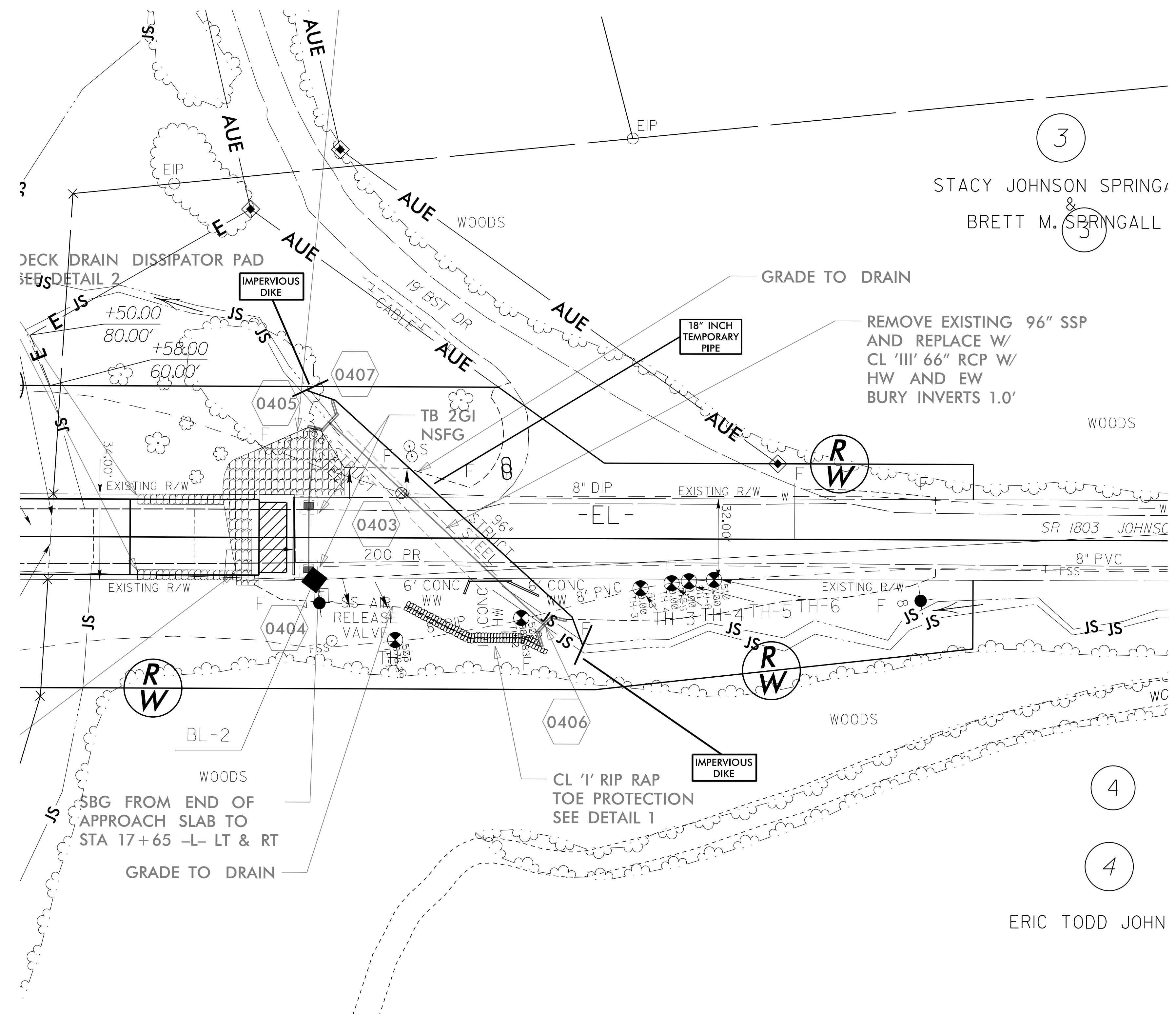


PROJECT REFERENCE NO. B-5398	SHEET NO. EC-05/CONST.04
RW SHEET NO.	
ROADWAY DESIGN ENGINEER	HYDRAULICS ENGINEER

NOTES: ANY DEVIATION FROM OPTIONS GIVEN WILL REQUIRE PRIOR APPROVAL BY ENGINEER.

ADDITIONAL EROSION CONTROL DEVICES MAY NEED TO BE INSTALLED AS DIRECTED BY THE ENGINEER.

PIPE PHASING FOR CONSTRUCTION SHEET 04



- ### PROPOSED 66" RCP CONSTRUCTION PHASING
1. INSTALL IMPERVIOUS DIKES AND 18" TEMPORARY PIPE
 2. REMOVE EXISTING 96" SSP, HW, AND EW
 3. DEWATER AREA USING SPECIAL STILLING BASIN
 4. CONSTRUCT PROPOSED 66" RCP, HW, AND EW
 5. REMOVE IMPERVIOUS DIKES AND TEMPORARY PIPE

STACY JOHNSON SPRING
&
BRETT M. SPRINGALL

ERIC TODD JOHN