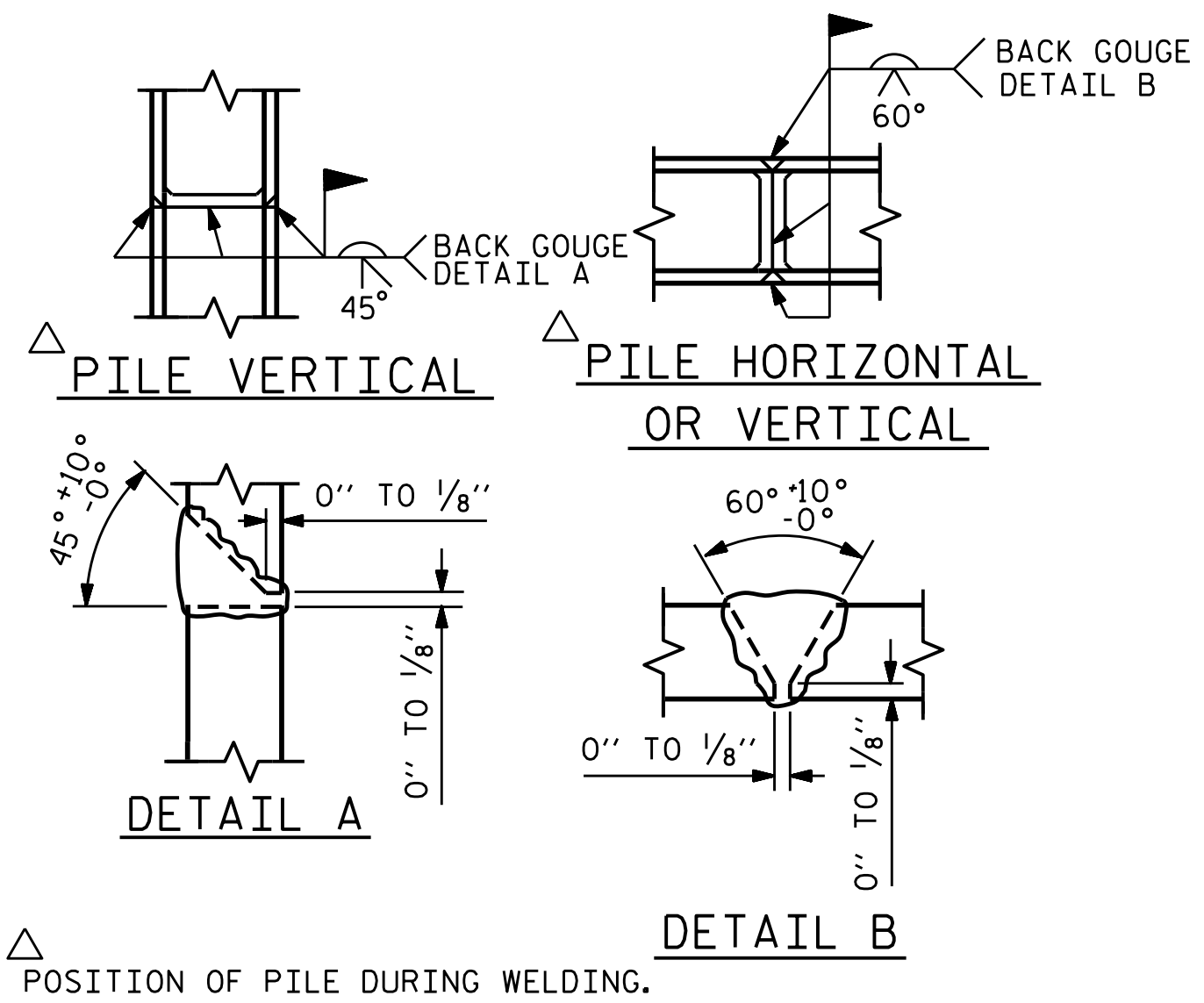


BAGGED STONE AND PIPE SHALL BE PLACED IMMEDIATELY AFTER COMPLETION STEEL, CORRUGATED ALUMINUM ALLOY, OR CORRUGATED PLASTIC. PERFORATED PIPE WILL NOT BE ALLOWED.

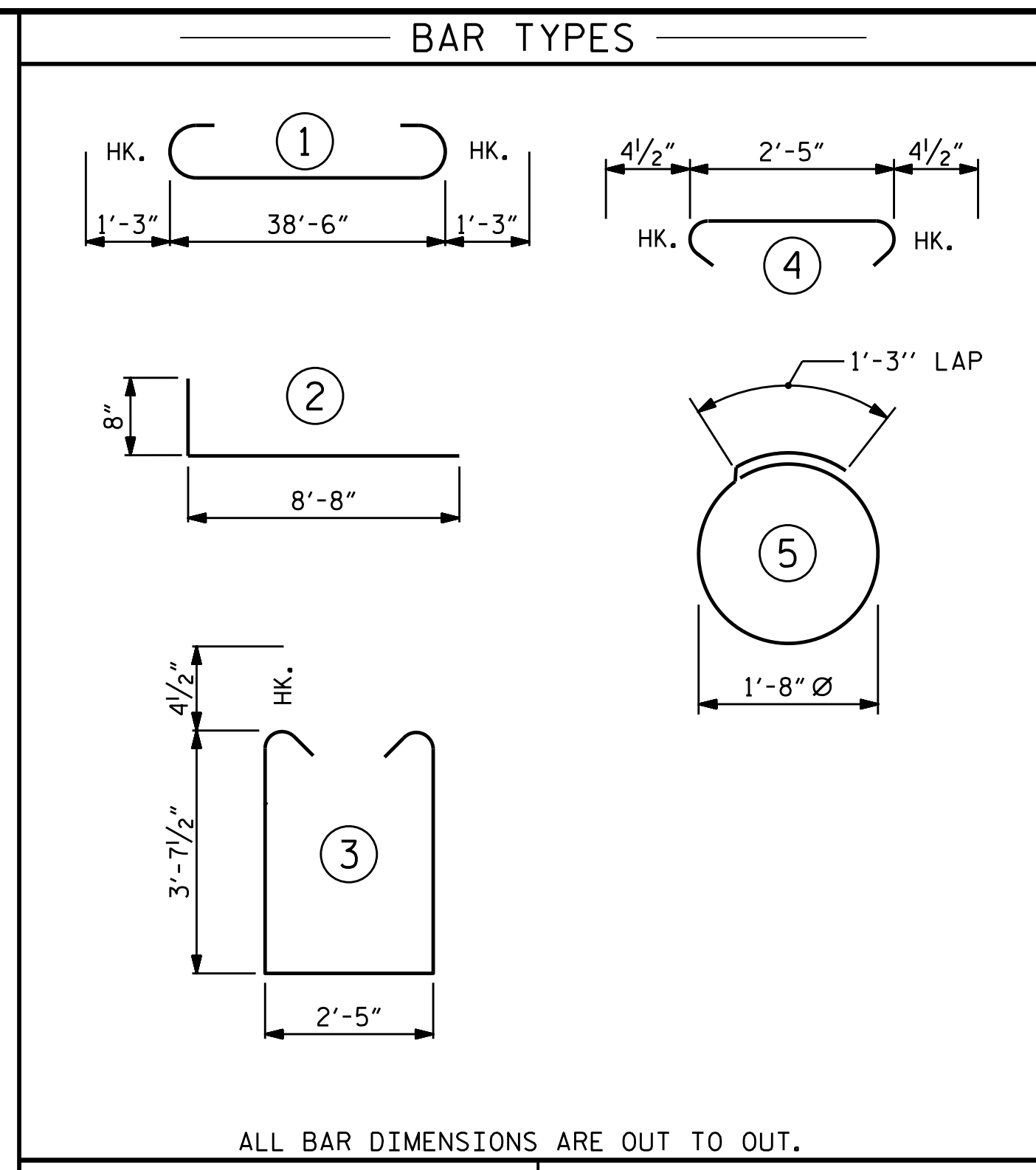
BAGGED STONE SHALL REMAIN IN PLACE UNTIL THE ENGINEER DIRECTS THAT IT BE REMOVED. THE CONTRACTOR SHALL REMOVE AND DISPOSE OF SILT ACCUMULATIONS AT BAGGED STONE WHEN SO DIRECTED BY THE ENGINEER. BAGS SHALL BE REMOVED AND REPLACED WHENEVER THE ENGINEER DETERMINES THAT THEY HAVE DETERIORATED AND LOST THEIR EFFECTIVENESS.

NO SEPARATE PAYMENT WILL BE MADE FOR THIS WORK AND THE ENTIRE COST OF THIS WORK SHALL BE INCLUDED IN THE UNIT CONTRACT PRICE BID FOR THE SEVERAL PAY ITEMS.

TEMPORARY DRAINAGE AT END BENT

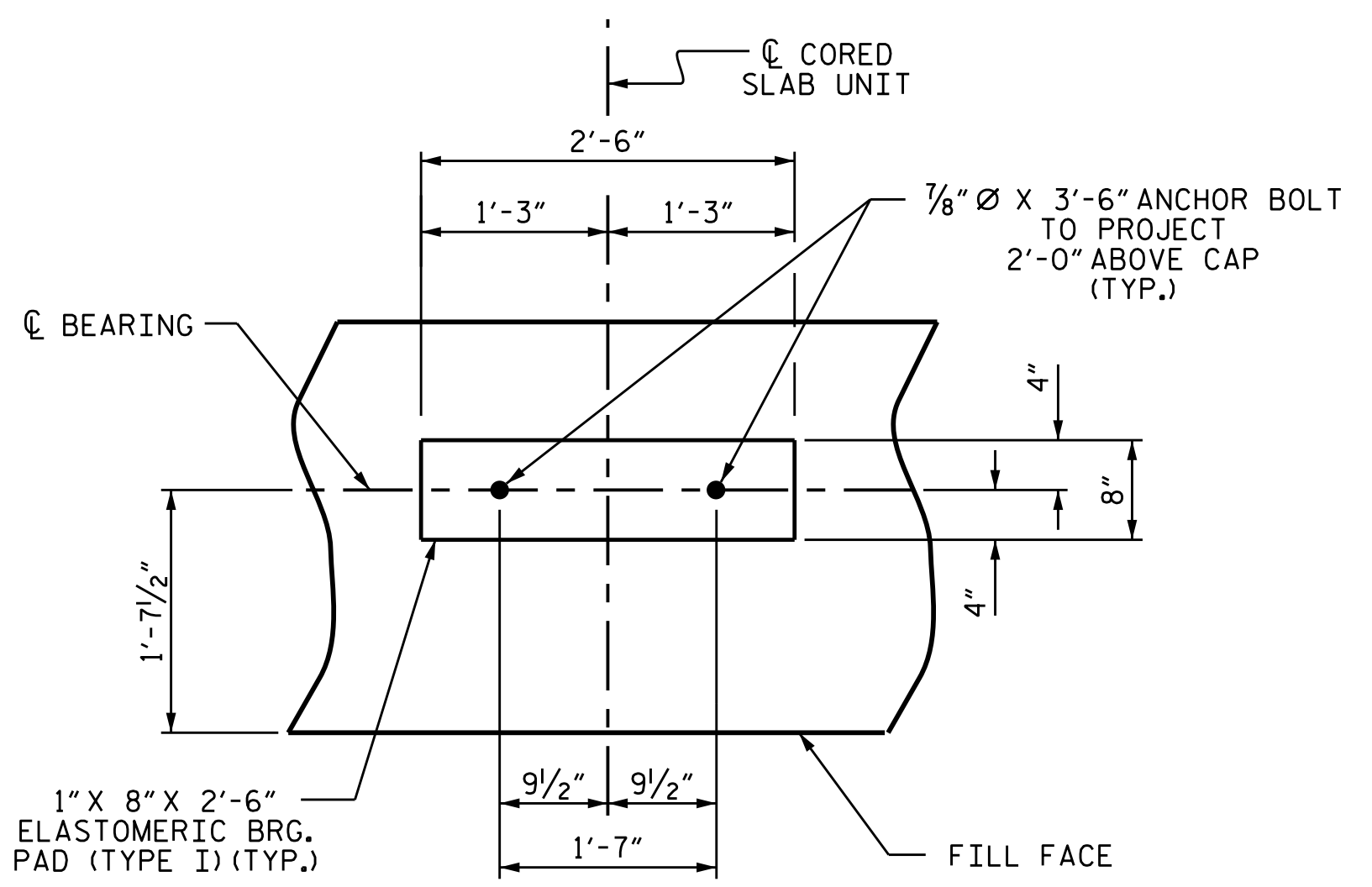


PILE SPLICE DETAILS



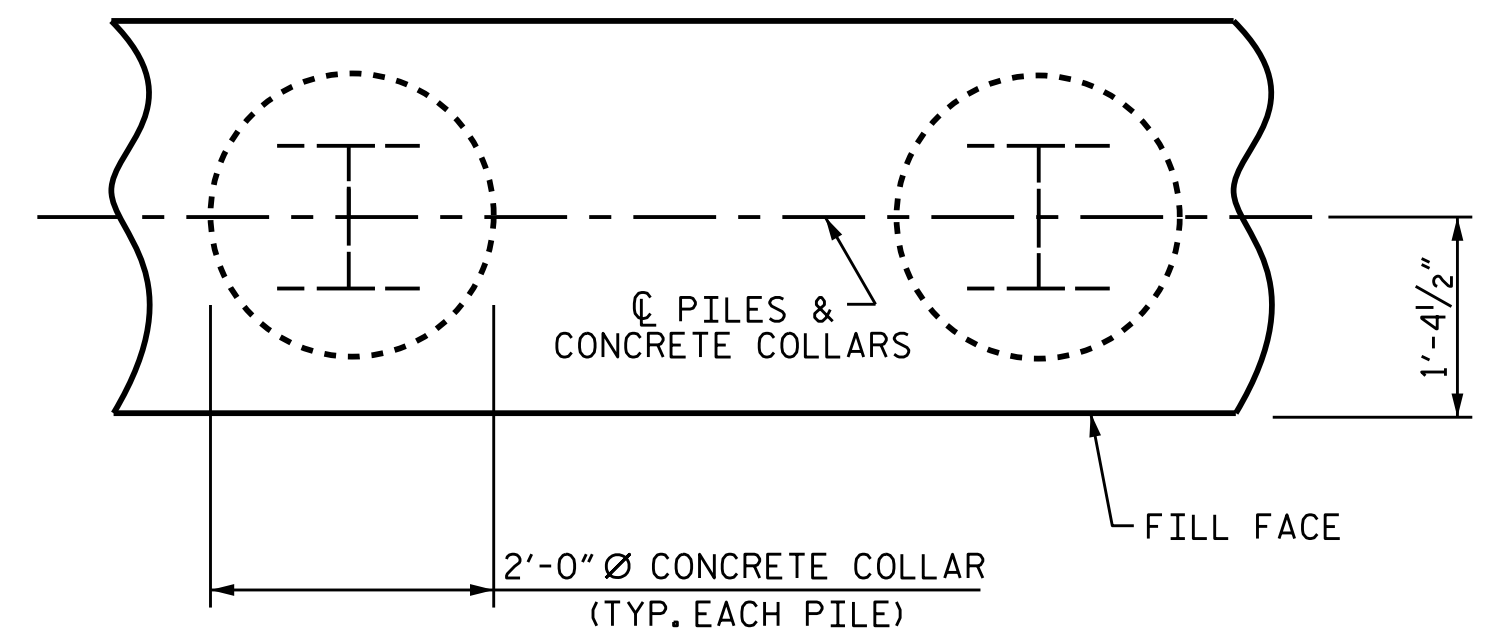
END BENT 1	END BENT 2
HP 12 X 53 STEEL PILES NO: 7 LIN. FT.= 70	HP 12 X 53 STEEL PILES NO: 7 LIN. FT.= 70
STEEL PILE POINTS EA. = 7	STEEL PILE POINTS EA. = 7
PILE EXCAVATION IN SOIL LIN. FT.= 31	PILE EXCAVATION IN SOIL LIN. FT.= 35
PILE EXCAVATION NOT IN SOIL LIN. FT.= 39	PILE EXCAVATION NOT IN SOIL LIN. FT.= 35

BILL OF MATERIAL					
FOR ONE END BENT (2 REQ'D)					
BAR NO.	NO.	SIZE	TYPE	LENGTH	WEIGHT
B1	8	#9	1	41'-0"	1115
B2	28	#4	STR	20'-7"	385
B3	10	#4	STR	2'-5"	16
H1	40	#4	2	9'-4"	249
K1	16	#4	STR	3'-1"	33
S1	50	#4	3	10'-5"	348
S2	50	#4	4	3'-2"	106
S3	28	#4	5	6'-6"	122
V1	52	#4	STR	6'-2"	214
REINFORCING STEEL					2588 LBS.
CLASS A CONCRETE BREAKDOWN					
POUR #1 CAP, LOWER PART OF WINGS & COLLARS					19.5 C.Y.
POUR #2 UPPER PART OF WINGS					2.3 C.Y.
TOTAL CLASS A CONCRETE					21.8 C.Y.

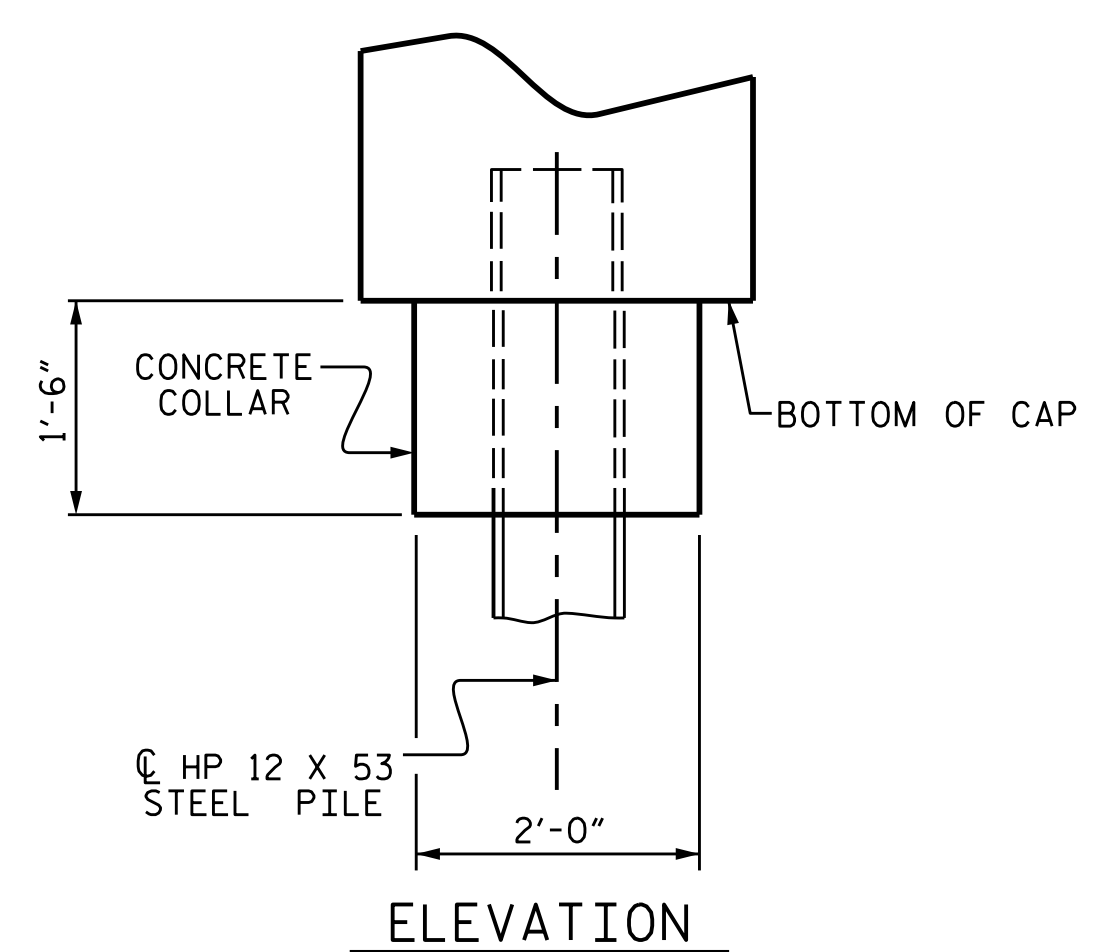


DETAIL "A"

(END BENT 1 SHOWN, END BENT 2 SIMILAR BY ROTATION)



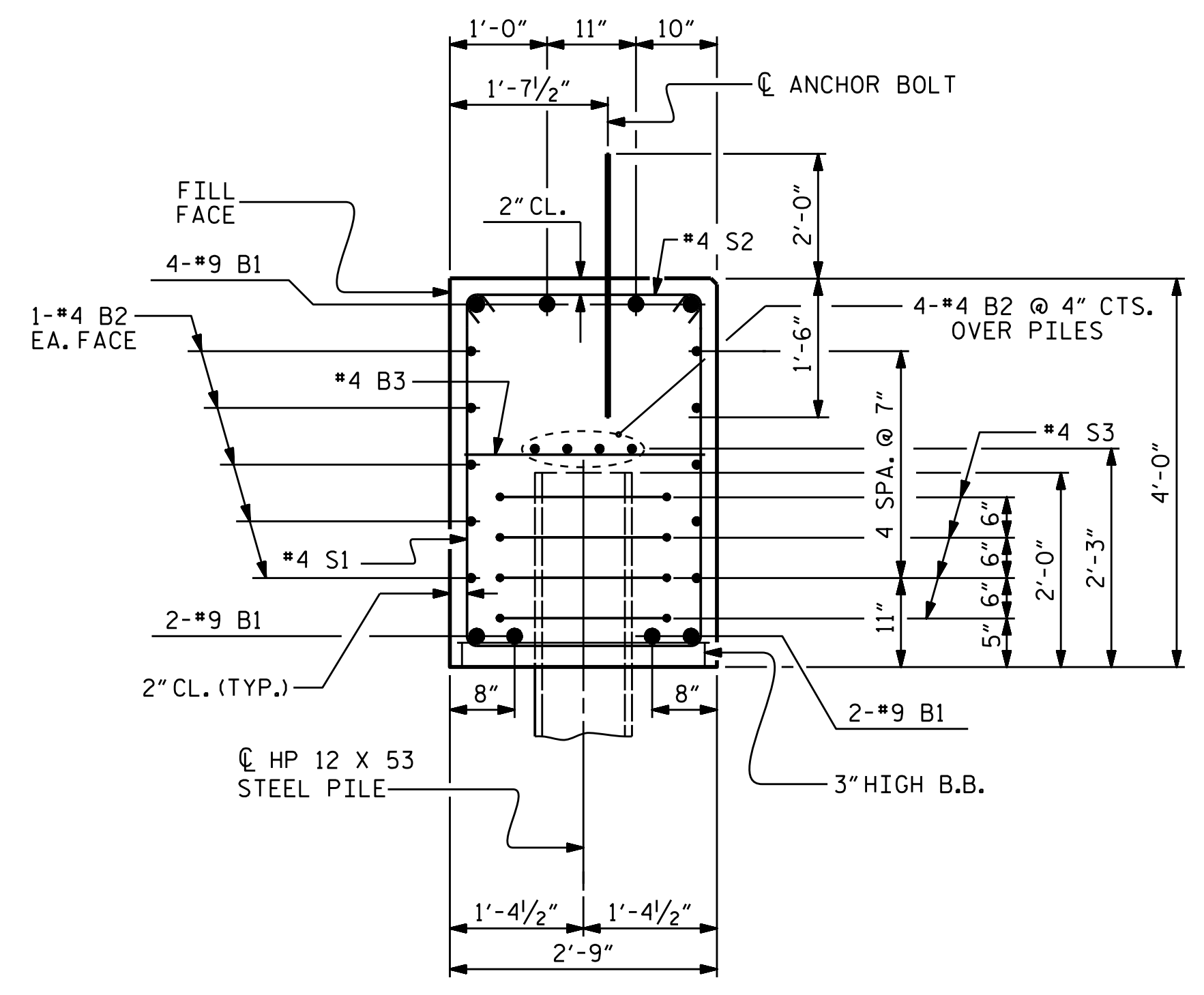
PLAN



ELEVATION

CORROSION PROTECTION FOR STEEL PILES DETAIL

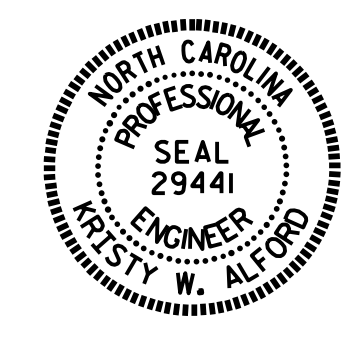
(END BENT 1 SHOWN, END BENT 2 SIMILAR BY ROTATION)



SECTION A-A

(CONCRETE COLLAR NOT SHOWN FOR CLARITY. SEE "CORROSION PROTECTION FOR STEEL PILES DETAIL.")

PROJECT NO. B-5343
ROCKINGHAM COUNTY
 STATION: 16+60.00 -L-
 SHEET 4 OF 4



STATE OF NORTH CAROLINA
 DEPARTMENT OF TRANSPORTATION
 RALEIGH
 SUBSTRUCTURE
 END BENTS 1 & 2
 DETAILS

ASSEMBLED BY : H. B. DESAI	DATE : 10/2015
CHECKED BY : E. I. OMILE	DATE : 11/2/15
DRAWN BY : WJH	12/11
CHECKED BY : AAC	12/11

DOCUMENT NOT CONSIDERED FINAL UNLESS ALL SIGNATURES COMPLETED

REVISIONS						SHEET NO.	
NO.	BY:	DATE:	NO.	BY:	DATE:	S-16	
1			3			TOTAL SHEETS 18	
2			4				