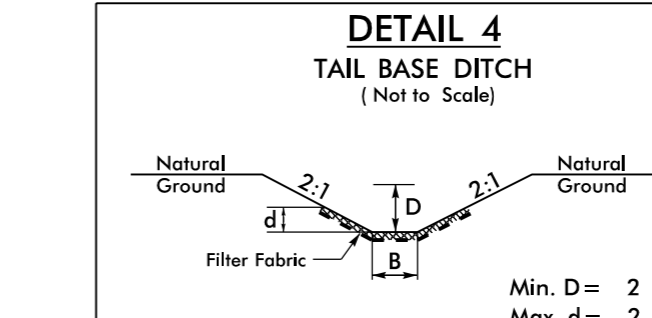
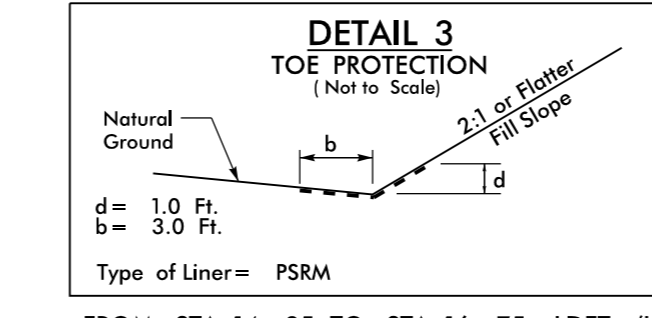
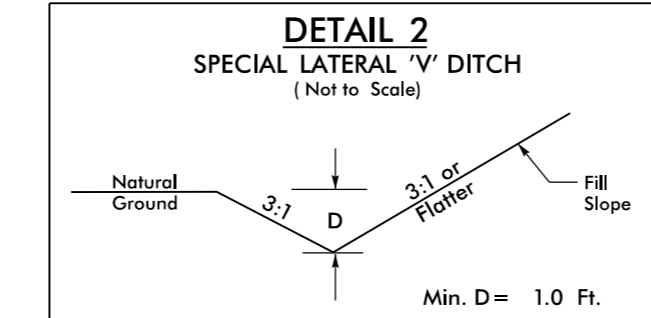
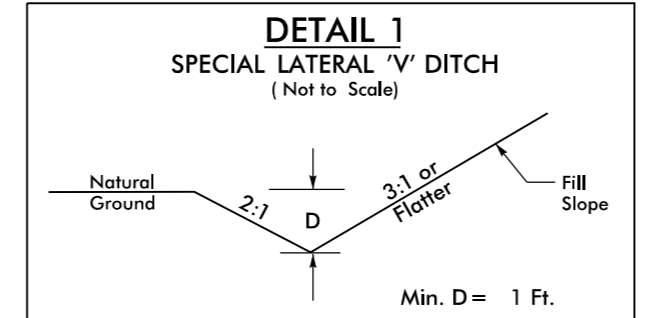
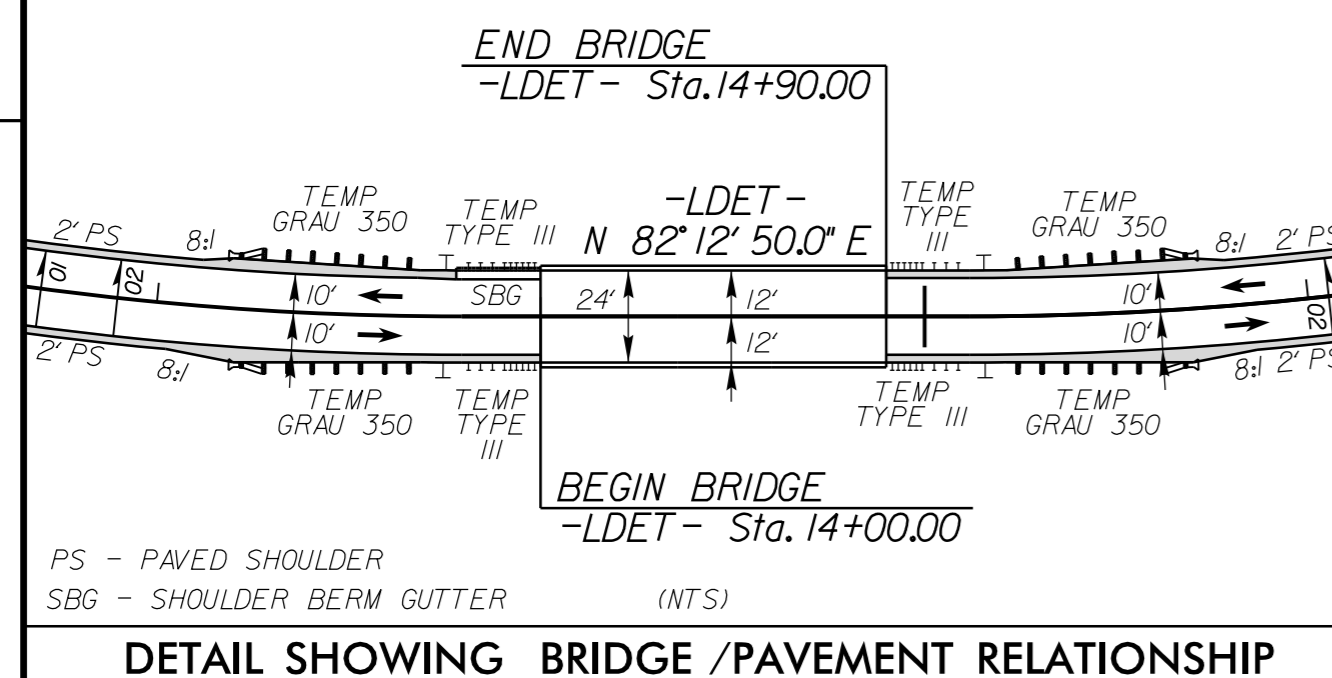


PROJECT REFERENCE NO. B-5343	SHEET NO. 5
RW SHEET NO.	
ROADWAY DESIGN ENGINEER	HYDRAULICS ENGINEER

**DOCUMENT NOT CONSIDERED FINAL UNLESS ALL SIGNATURES COMPLETED**



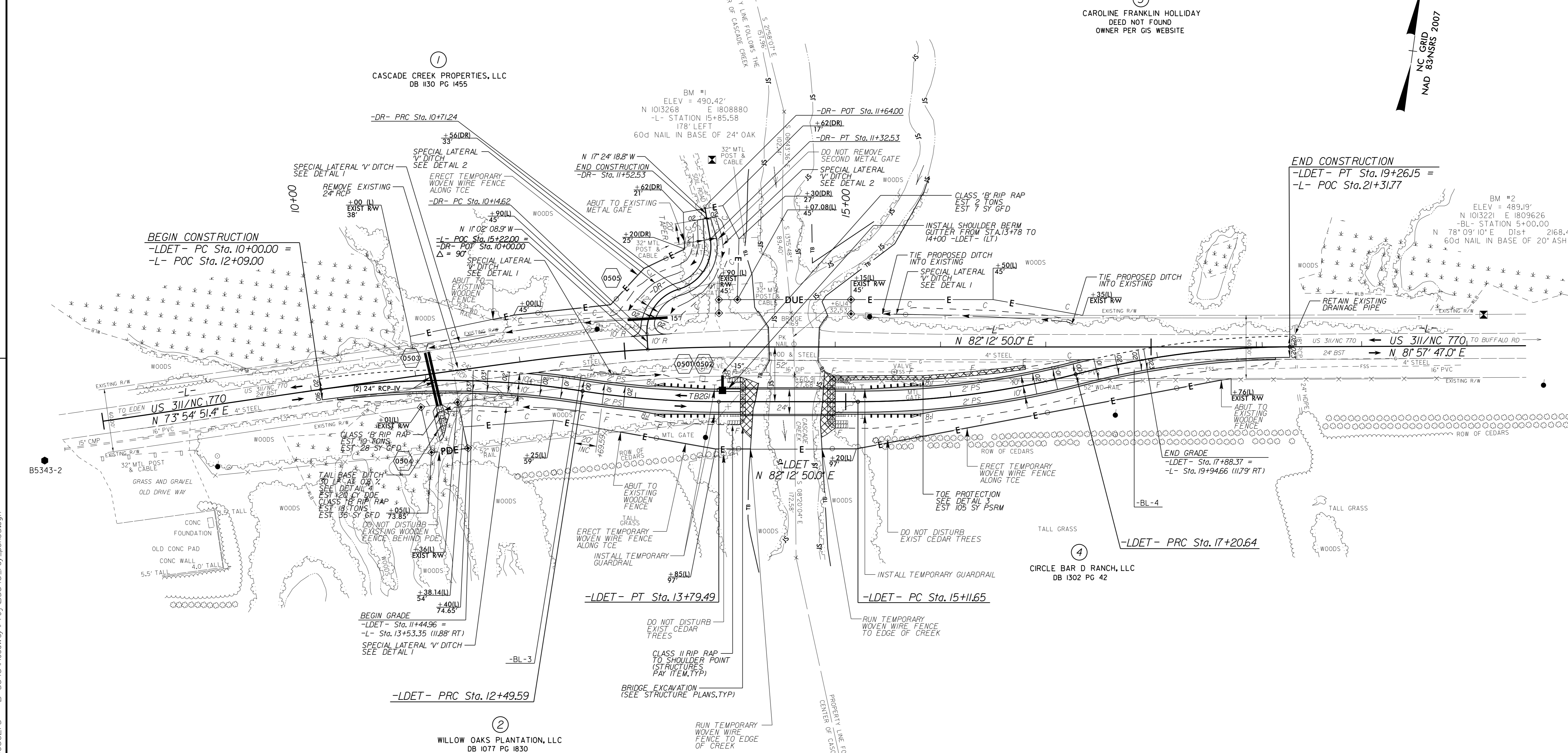
FROM STA. 13+15 TO STA. 15+00 -L- (LT)  
 FROM STA. 17+45 TO STA. 19+20 -L- (LT)  
 FROM STA. 11+17 TO STA. 12+50 -LDET- (RT)  
 FROM STA. 12+50 TO STA. 13+25 -LDET- (LT)

FROM STA. 10+25 TO STA. 11+52.53 -DR- (LT)  
 FROM STA. 10+40 TO STA. 11+52.53 -DR- (RT)

FROM STA. 14+85 TO STA. 16+75 -LDET- (LT)

FROM STA. 11+13 TO STA. 11+17 -LDET- (RT)

REVISIONS



①  
 CASCADE CREEK PROPERTIES, LLC  
 DB 1130 PG 1455

②  
 WILLOW OAKS PLANTATION, LLC  
 DB 1077 PG 1830

③  
 CAROLINE FRANKLIN HOLLIDAY  
 DEED NOT FOUND  
 OWNER PER GIS WEBSITE

④  
 CIRCLE BAR D RANCH, LLC  
 DB 1302 PG 42

-LDET- (V<sub>DET</sub> = 50 MPH)

PI Sta 11+25.74 Δ = 17° 10' 03.0" (RT) D = 6' 52' 41.7" L = 249.59' T = 125.74' R = 833.00' DS = 50 MPH SE = RC RO = 40'	PI Sta 13+14.67 Δ = 8° 56' 05.3" (LT) D = 6' 52' 41.7" L = 129.90' T = 65.08' R = 833.00' DS = 50 MPH SE = RC RO = 40'	PI Sta 16+16.70 Δ = 14° 22' 28.1" (LT) D = 6' 52' 41.7" L = 208.98' T = 105.04' R = 833.00' DS = 50 MPH SE = RC RO = 40'	PI Sta 18+23.92 Δ = 14° 08' 09.7" (RT) D = 6' 52' 41.7" L = 205.52' T = 103.28' R = 833.00' DS = 50 MPH SE = RC RO = 40'
--	--	--	--

ALL TEMPORARY WOVEN WIRE FENCING TO BE INSTALLED BY ROADWAY CONTRACTOR

ALL TEMPORARY WOVEN WIRE FENCING TO BE REMOVED BY OTHERS

SEE SHEET 6 FOR -LDET- PROFILE

SEE SHEET 6 FOR -DR- PROFILE

SEE SHEETS SITHRU S18 FOR STRUCTURE PLANS

8/9/2016 K:\PAL\_Roadway\01036275 - B-5343\Roadway\Proj\B5343\_rdy\_dsn05.dgn