

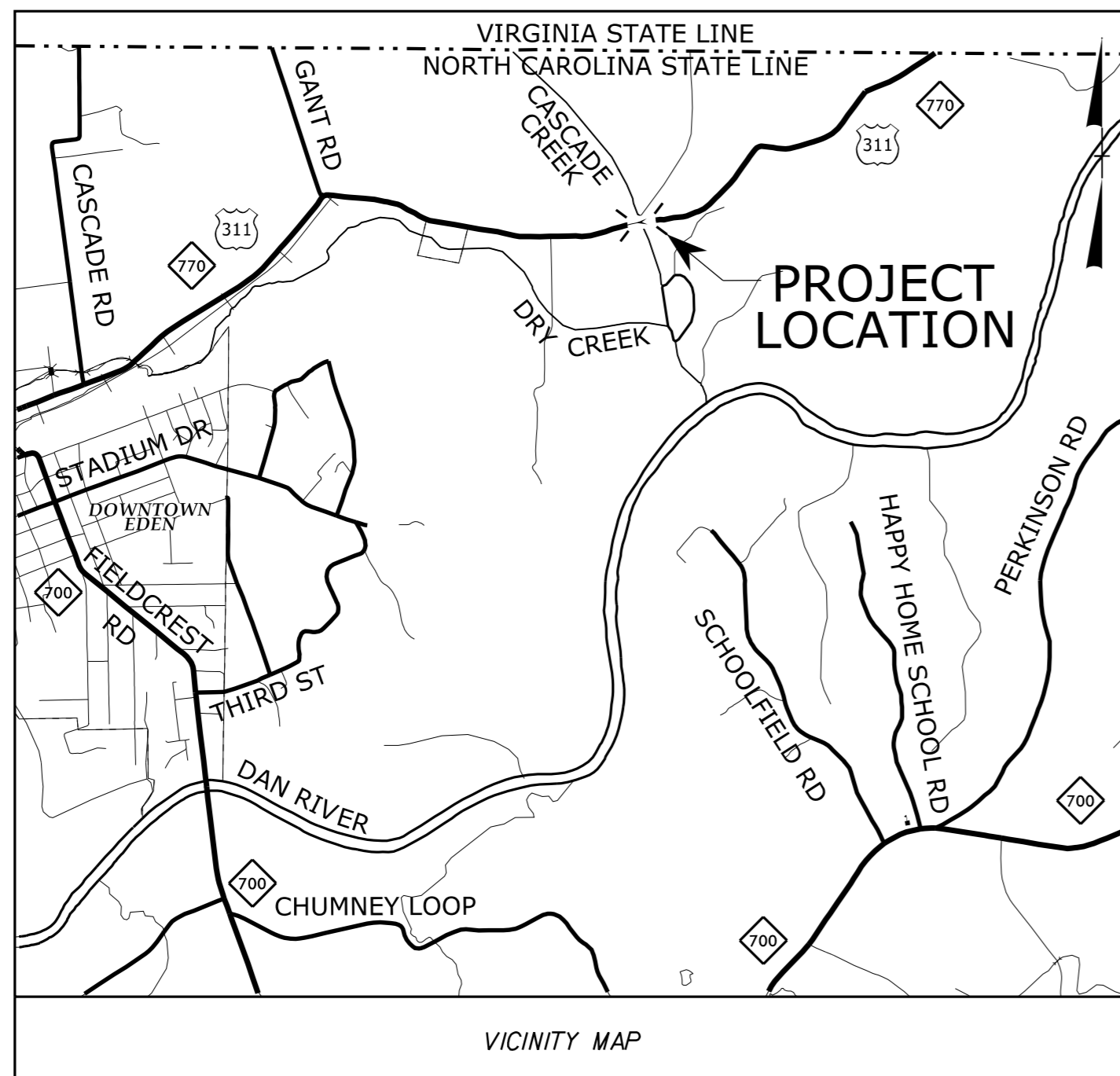
See Sheet 1A For Index of Sheets  
 See Sheet 1B For Conventional Symbols  
 See Sheet 1C-1 For Survey Control Sheet

STATE OF NORTH CAROLINA  
 DIVISION OF HIGHWAYS

**ROCKINGHAM COUNTY**

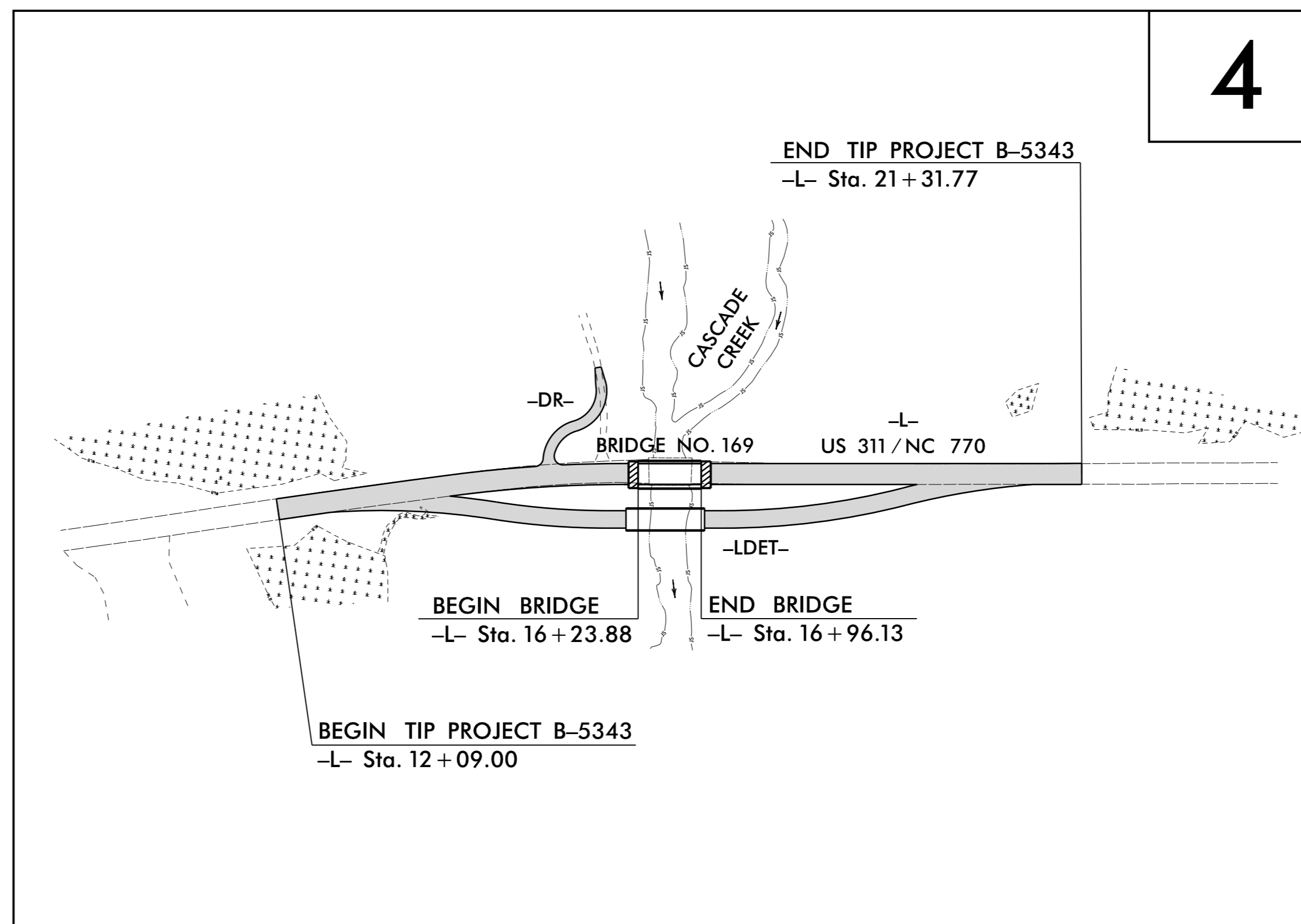
STATE	STATE PROJECT REFERENCE NO.	SHEET NO.	TOTAL SHEETS
N.C.	B-5343	1	
STATE PROJ. NO.	F.A. PROJ. NO.	DESCRIPTION	
46057.1.1	BRSTP-0770(4)	P.E.	
46057.2.1		RIGHT-OF-WAY	
46057.2.1		UTILITIES	
46057.3.1		CONSTRUCTION	

**TIP PROJECT: B-5343**

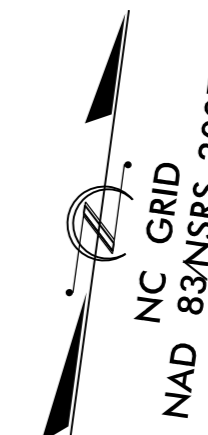


**LOCATION: BRIDGE NO. 169 OVER CASCADE CREEK  
 ON US 311 / NC 770**

**TYPE OF WORK: GRADING, DRAINAGE, PAVING, AND STRUCTURE**

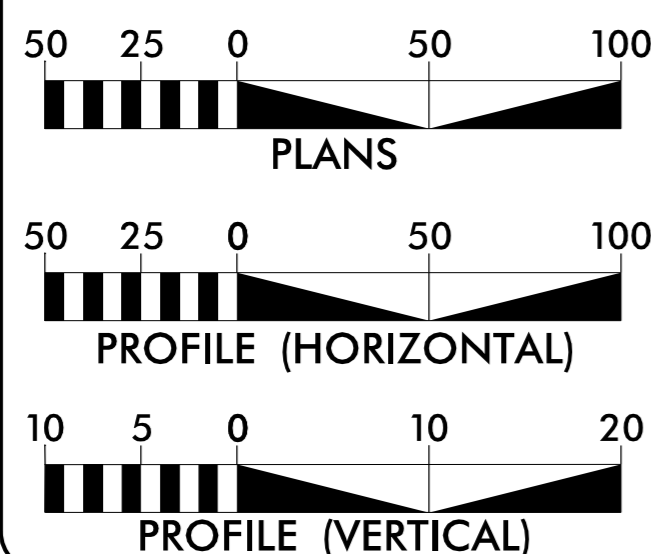


**4**



**CONTRACT: C203802**

**GRAPHIC SCALES**



**DESIGN DATA**

ADT 2016 = 2829 VPD  
 ADT 2040 = 4800 VPD  
 K = 10%  
 D = 55%  
 T = 11%\*  
 V = 60 MPH  
 V<sub>DET</sub> = 50 MPH  
 FUNCTIONAL CLASSIFICATION: RURAL MAJOR COLLECTOR  
 \* 8% TTST 3% DUAL SUB-REGIONAL TIER

**PROJECT LENGTH**

LENGTH ROADWAY TIP PROJECT B-5343 = 0.161 MILES  
 LENGTH STRUCTURE TIP PROJECT B-5343 = 0.014 MILES  
 TOTAL LENGTH TIP PROJECT B-5343 = 0.175 MILES

PLANS PREPARED FOR THE NCDOT BY:

**Kimley Horn**

THE ENGINEER HAS:  
 P.L. BOX 3348  
 RALEIGH, NORTH CAROLINA 27602  
 PHONE: (919) 977-0200

2012 STANDARD SPECIFICATIONS

RIGHT OF WAY DATE:

NOVEMBER 20, 2015

LETTING DATE:

NOVEMBER 15, 2016

**JEFFREY W. MOORE, P.E.**  
 PROJECT ENGINEER

**J. JASON PACE, P.E.**  
 PROJECT DESIGN ENGINEER

**BRENDA MOORE, P.E., CPM**  
 ASSISTANT STATE ROADWAY DESIGN ENGINEER

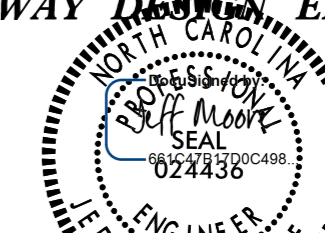
**HYDRAULICS ENGINEER**



10/7/2016

P.E.

**ROADWAY DESIGN ENGINEER**



10/7/2016

P.E.

SIGNATURE:

DOCUMENT NOT CONSIDERED FINAL  
 UNLESS ALL SIGNATURES COMPLETED

