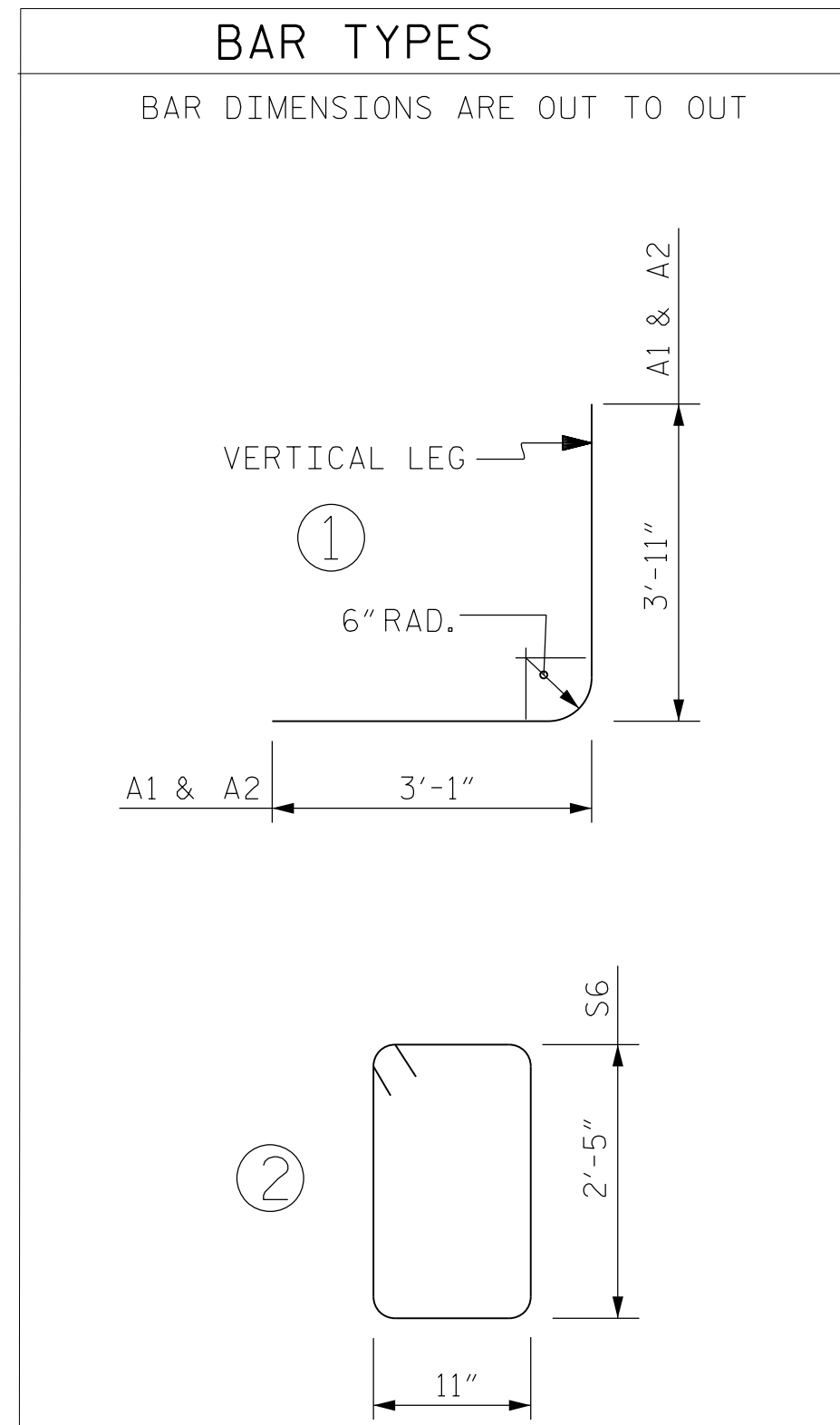


PHASE III

PHASE IV



BAR	NO.	SIZE	TYPE	LENGTH	WEIGHT
A1	118	5	1	7'-0"	862
A2	118	5	1	7'-0"	862
A150	68	8	STR	25'-0"	4539
A250	137	5	STR	25'-0"	3572
A350	118	5	STR	25'-0"	3077
A450	118	5	STR	25'-0"	3077
B1	68	4	STR	7'-6"	341
B2	118	5	STR	6'-8"	820
B3	274	6	STR	8'-9"	3601
C3	156	4	STR	24'-3"	2527
C4	78	4	STR	26'-3"	1368
D1	4	6	STR	1'-7"	10
D2	4	6	STR	2'-7"	16
G3	4	5	STR	25'-0"	104
S3	6	5	STR	25'-0"	156
S6	25	5	2	6'-8"	174

PHASE III TOTAL REINFORCING STEEL = 25,106 LBS

BAR	NO.	SIZE	TYPE	LENGTH	WEIGHT
A1	241	5	1	7'-0"	1760
A2	241	5	1	7'-0"	1760
A150	128	8	STR	25'-0"	8544
A151	1	8	STR	24'-6"	65
A152	1	8	STR	22'-9"	61
A153	1	8	STR	21'-1"	56
A154	1	8	STR	19'-4"	52
A155	1	8	STR	17'-7"	47
A156	1	8	STR	15'-10"	42
A157	1	8	STR	14'-1"	38
A158	1	8	STR	12'-5"	33
A159	1	8	STR	10'-8"	28
A160	1	8	STR	8'-11"	24
A161	1	8	STR	7'-2"	19
A162	1	8	STR	5'-5"	14
A163	1	8	STR	3'-9"	10
A250	256	5	STR	25'-0"	6675
A251	1	5	STR	24'-6"	26
A252	1	5	STR	23'-8"	25
A253	1	5	STR	22'-9"	24
A254	1	5	STR	21'-11"	23
A255	1	5	STR	21'-1"	22
A256	1	5	STR	20'-2"	21
A257	1	5	STR	19'-4"	20
A258	1	5	STR	18'-5"	19
A259	1	5	STR	17'-7"	18
A260	1	5	STR	16'-9"	17
A261	1	5	STR	15'-10"	17
A262	1	5	STR	15'-0"	16
A263	1	5	STR	14'-1"	15
A264	1	5	STR	13'-3"	14
A265	1	5	STR	12'-5"	13
A266	1	5	STR	11'-6"	12
A267	1	5	STR	10'-8"	11
A268	1	5	STR	9'-9"	10
A269	1	5	STR	8'-11"	9
A270	1	5	STR	8'-1"	8
A271	1	5	STR	7'-2"	7
A272	1	5	STR	6'-4"	7
A273	1	5	STR	5'-5"	6
A274	1	5	STR	4'-7"	5
A275	1	5	STR	3'-9"	4
A276	1	5	STR	2'-10"	3

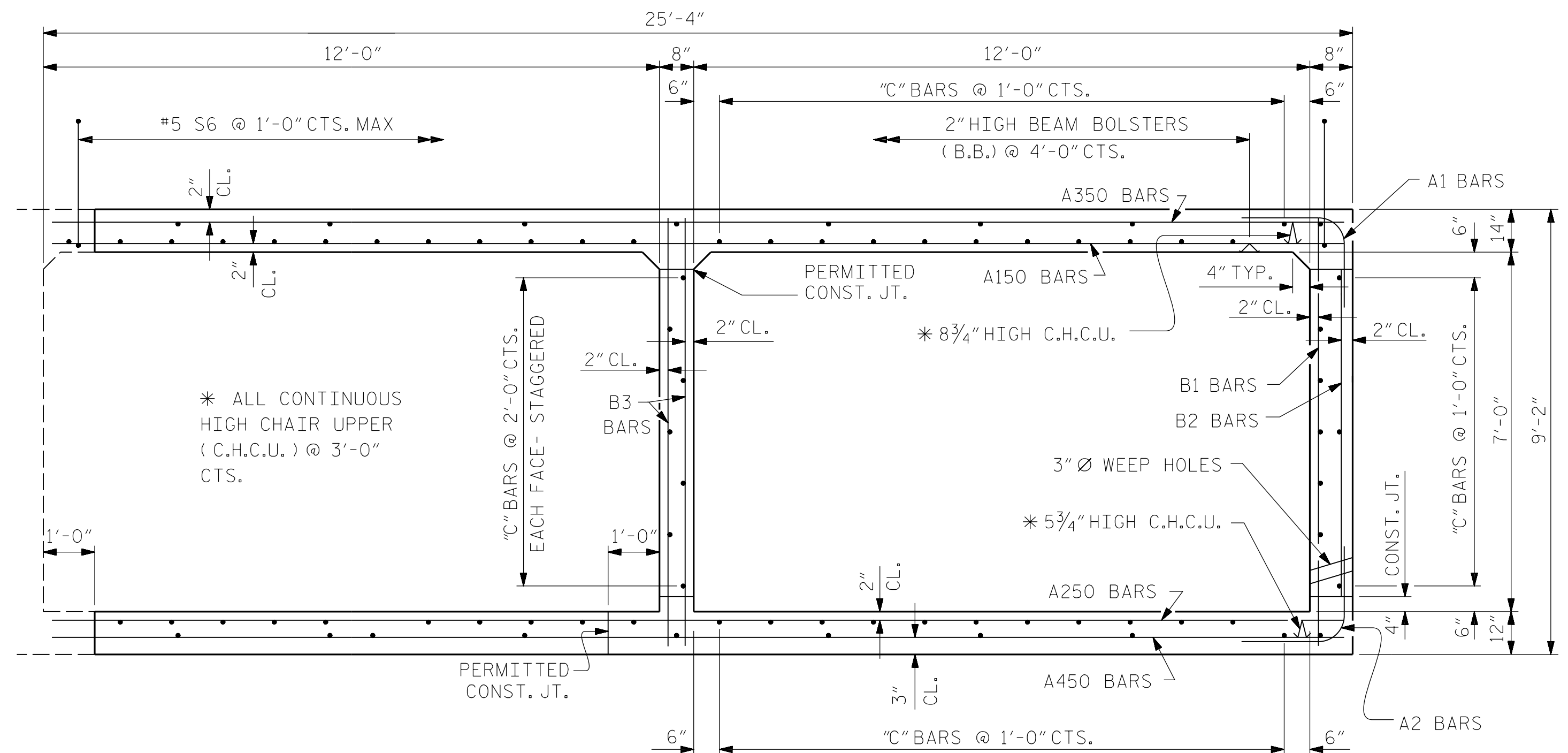
A450	219	5	STR	25'-0"	5710
A451	1	5	STR	24'-3"	25
A452	1	5	STR	23'-2"	24
A453	1	5	STR	22'-2"	23
A454	1	5	STR	21'-2"	22
A455	1	5	STR	20'-2"	21
A456	1	5	STR	19'-2"	20
A457	1	5	STR	18'-2"	19
A458	1	5	STR	17'-2"	18
A459	1	5	STR	16'-2"	17
A460	1	5	STR	15'-2"	16
A461	1	5	STR	14'-2"	15
A462	1	5	STR	13'-1"	14
A463	1	5	STR	12'-1"	13
A464	1	5	STR	11'-1"	12
A465	1	5	STR	10'-1"	11
A466	1	5	STR	9'-1"	9
A467	1	5	STR	8'-0"	8
A468	1	5	STR	7'-0"	7
A469	1	5	STR	6'-0"	6
A470	1	5	STR	5'-0"	5
A471	1	5	STR	4'-0"	4
A472	1	5	STR	3'-0"	3
B1	141	4	STR	7'-6"	706
B2	243	5	STR	6'-8"	1690
B3	540	6	STR	8'-9"	7097
C5	390	4	STR	29'-3"	7620
D1	4	6	STR	1'-7"	10
D2	4	6	STR	2'-7"	16
G4	4	5	STR	28'-11"	121
S4	6	5	STR	28'-11"	181
U2	16	5	STR	4'-9"	80
A350	219	5	STR	25'-0"	5710
A351	1	5	STR	24'-3"	25
A352	1	5	STR	23'-2"	24
A353	1	5	STR	22'-2"	23
A354	1	5	STR	21'-2"	22
A355	1	5	STR	20'-2"	21
A356	1	5	STR	19'-2"	20
A357	1	5	STR	18'-2"	19
A358	1	5	STR	17'-2"	18
A359	1	5	STR	16'-2"	17
A360	1	5	STR	15'-2"	16
A361	1	5	STR	14'-2"	15
A362	1	5	STR	13'-1"	14
A363	1	5	STR	12'-1"	13
A364	1	5	STR	11'-1"	12
A365	1	5	STR	10'-1"	11
A366	1	5	STR	9'-1"	19
A367	1	5	STR	8'-0"	8
A368	1	5	STR	7'-0"	7
A369	1	5	STR	6'-1"	6
A370	1	5	STR	5'-0"	5
A371	1	5	STR	4'-0"	4
A372	1	5	STR	3'-0"	3

PHASE IV TOTAL REINFORCING STEEL = 49,165 LBS

BAR	SPLICE LENGTH
#4	2'-0"
#5	2'-7"
#8	7'-7"

NOTES

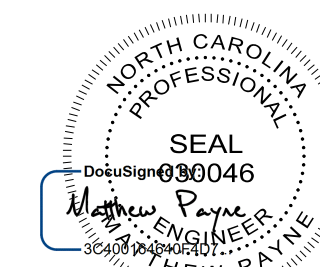
1. BAR DIMENSIONS ARE OUT TO OUT
2. ALL REINFORCING STEEL AND BAR SUPPORTS SHALL BE EPOXY COATED IN ACCORDANCE WITH THE STANDARD SPECIFICATIONS.
3. C4 BARS ARE THE LONGITUDINAL EXTENSION FOR PHASE III INTO PHASE IV.



PHASE III AND IV RIGHT ANGLE SECTION OF BARREL

THERE ARE 78 "C" BARS IN SECTION OF BARREL.

PROJECT NO. 17BP.3.R.28
 NEW HANOVER COUNTY
 STATION: 14+60.69 -L-



9/28/2016

DOCUMENT NOT CONSIDERED FINAL UNLESS ALL SIGNATURES COMPLETED

STATE OF NORTH CAROLINA
 DEPARTMENT OF TRANSPORTATION
 RALEIGH
 TRIPLE 12 FT. X 7 FT.
 CONCRETE BOX CULVERT
 90°(-L-) 60°(-Y-) SKEW

DRAWN BY : C. DESROCHERS DATE : MAY 2014
 CHECKED BY : M. PAYNE DATE : MAY 2014

28-SEP-2016 14:26
 *****DCN*****
 PAYN5628 AT LUS290333

ATKINS 1616 E. MILLBROOK ROAD, SUITE #310
 RALEIGH, NORTH CAROLINA 27609
 (919) 876-6888 NCBES #F-0326

REVISIONS						SHEET NO.
NO.	BY:	DATE:	NO.	BY:	DATE:	C-8
1			3			TOTAL SHEETS
2			4			11