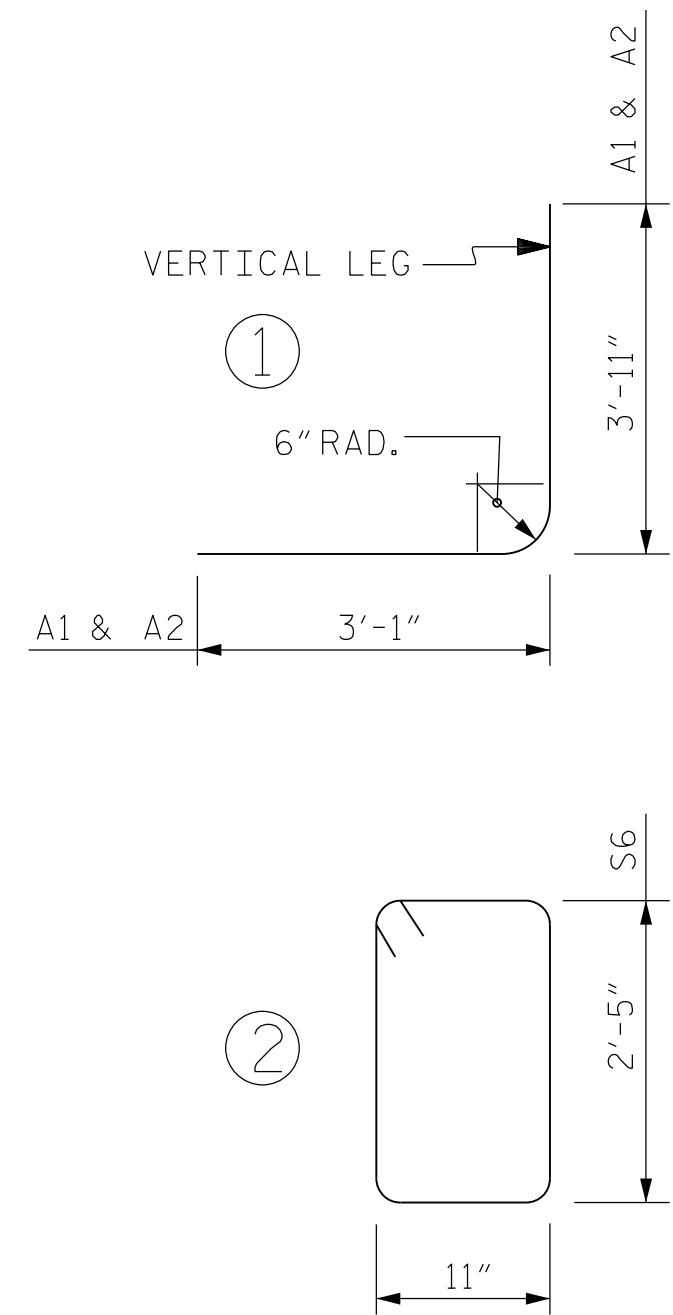


PHASE I

PHASE II

BAR TYPES

BAR DIMENSIONS ARE OUT TO OUT



SPLICE LENGTH CHART	
BAR	SPLICE LENGTH
#4	2'-0"
#5	2'-7"
#8	7'-7"

NOTES

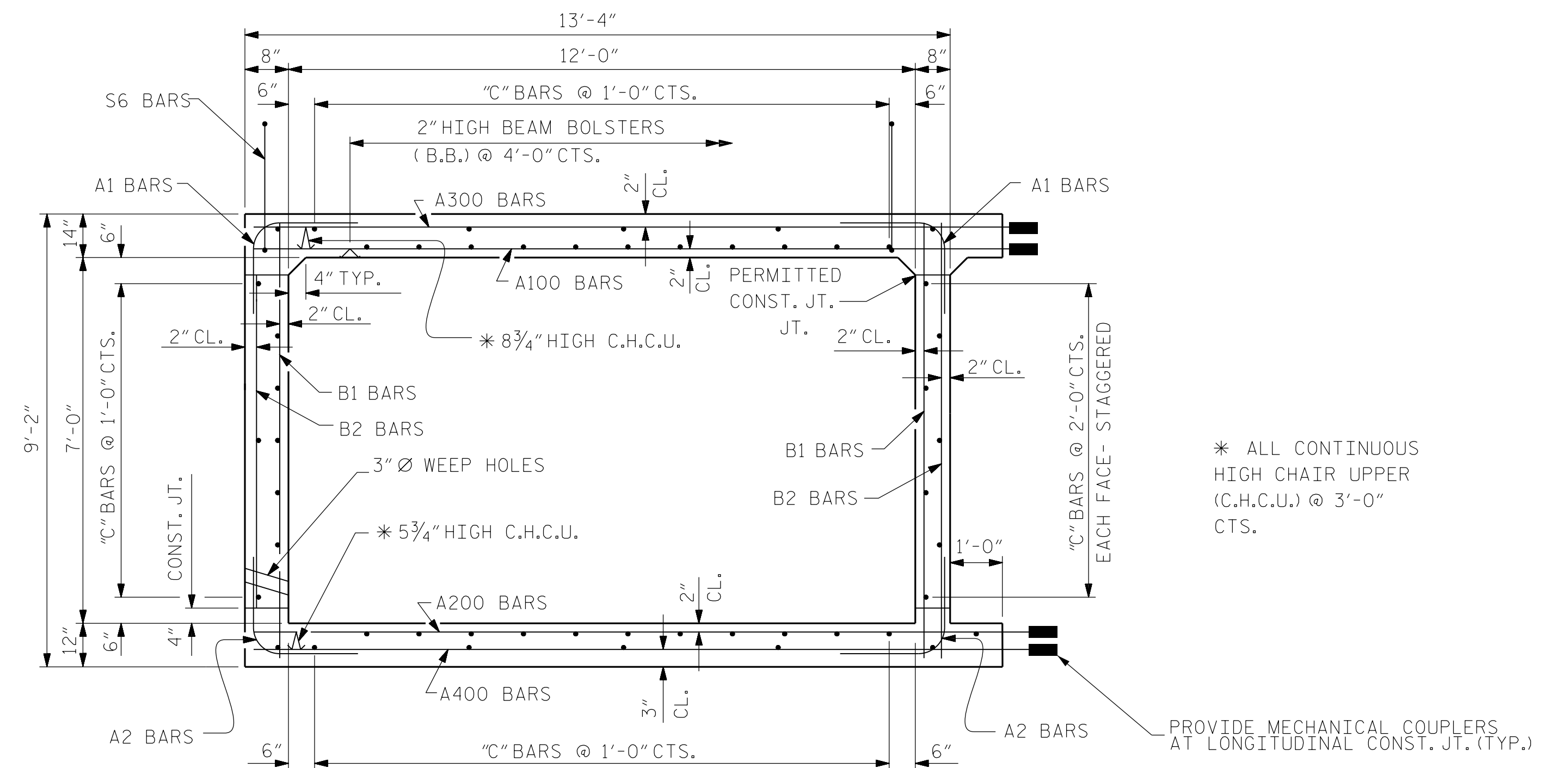
1. BAR DIMENSIONS ARE OUT TO OUT
2. ALL REINFORCING STEEL AND BAR SUPPORTS SHALL BE EPOXY COATED IN ACCORDANCE WITH THE STANDARD SPECIFICATIONS.
3. C2 BARS ARE THE LONGITUDINAL EXTENSION FOR PHASE I INTO PHASE II.

BAR	NO.	SIZE	TYPE	LENGTH	WEIGHT
A1	422	5	1	7'-0"	3081
A2	422	5	1	7'-0"	3081
A100	121	8	STR	16'-9"	5411
A101	1	8	STR	15'-0"	40
A102	1	8	STR	13'-3"	35
A103	1	8	STR	11'-6"	31
A104	1	8	STR	9'-9"	26
A105	1	8	STR	8'-1"	22
A106	1	8	STR	6'-4"	17
A200	241	5	STR	16'-2"	4064
A201	1	5	STR	15'-3"	16
A202	1	5	STR	14'-5"	15
A203	1	5	STR	13'-6"	14
A204	1	5	STR	12'-8"	13
A205	1	5	STR	11'-10"	12
A206	1	5	STR	10'-11"	11
A207	1	5	STR	10'-1"	11
A208	1	5	STR	9'-2"	10
A209	1	5	STR	8'-4"	9
A210	1	5	STR	7'-6"	8
A211	1	5	STR	6'-7"	7
A212	1	5	STR	5'-9"	6
A300	206	5	STR	16'-2"	3474
A301	1	5	STR	15'-1"	16
A302	1	5	STR	14'-1"	15
A303	1	5	STR	13'-1"	14
A304	1	5	STR	12'-1"	13
A305	1	5	STR	11'-1"	12
A306	1	5	STR	10'-1"	11
A307	1	5	STR	9'-1"	9
A308	1	5	STR	8'-1"	8
A309	1	5	STR	7'-0"	7
A310	1	5	STR	6'-0"	6
A400	206	5	STR	16'-2"	3474
A401	1	5	STR	15'-1"	16
A402	1	5	STR	14'-1"	15
A403	1	5	STR	13'-1"	14
A404	1	5	STR	12'-1"	13
A405	1	5	STR	11'-1"	12
A406	1	5	STR	10'-1"	11
A407	1	5	STR	9'-1"	9
A408	1	5	STR	8'-1"	8
A409	1	5	STR	7'-0"	7
A410	1	5	STR	6'-0"	6
B1	248	4	STR	7'-6"	1242
B2	424	5	STR	6'-8"	2948
C1	250	4	STR	27'-2"	4606
D1	4	6	STR	1'-7"	10
G1	4	5	STR	18'-8"	78
S1	6	5	STR	18'-8"	117
U1	8	5	STR	4'-3"	34

PHASE I TOTAL REINFORCING STEEL = 32,145 LBS

BAR	NO.	SIZE	TYPE	LENGTH	WEIGHT
A1	236	5	1	7'-0"	1723
A2	236	5	1	7'-0"	1723
A100	68	8	STR	16'-9"	3041
A200	137	5	STR	16'-2"	2310
A300	118	5	STR	16'-2"	1990
A400	118	5	STR	16'-2"	1990
B1	136	4	STR	7'-6"	681
B2	236	5	STR	6'-8"	1641
C3	150	4	STR	24'-3"	2430
D1	4	6	STR	1'-7"	10
G2	4	5	STR	16'-2"	67
S2	6	5	STR	16'-2"	101
S6	12	5	2	6'-8"	83

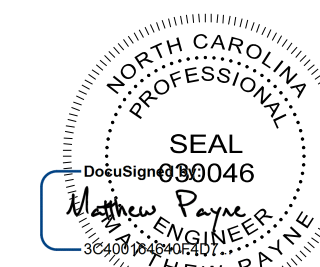
PHASE II TOTAL REINFORCING STEEL = 17,790 LBS



RIGHT ANGLE SECTION OF BARREL FOR PHASE I AND II

THERE ARE 50 "C" BARS IN SECTION OF BARREL.

PROJECT NO. 17BP.3.R.28
 NEW HANOVER COUNTY
 STATION: 14+60.69 -L-



9/28/2016

DOCUMENT NOT CONSIDERED FINAL UNLESS ALL SIGNATURES COMPLETED

STATE OF NORTH CAROLINA
 DEPARTMENT OF TRANSPORTATION
 RALEIGH
 TRIPLE 12 FT. X 7 FT.
 CONCRETE BOX CULVERT
 90°(-L-) 60°(-Y-) SKEW

DRAWN BY : C. DESROCHERS DATE : MAY 2014
 CHECKED BY : M. PAYNE DATE : MAY 2014

28-SEP-2016 14:26
 *****DCN*****
 PAYN5628 AT LUS290333

ATKINS 1616 E. MILLBROOK ROAD, SUITE #310
 RALEIGH, NORTH CAROLINA 27609
 (919) 876-6888 NCBES #F-0326

REVISIONS						SHEET NO.
NO.	BY:	DATE:	NO.	BY:	DATE:	C-7
1			3			TOTAL SHEETS
2			4			11