



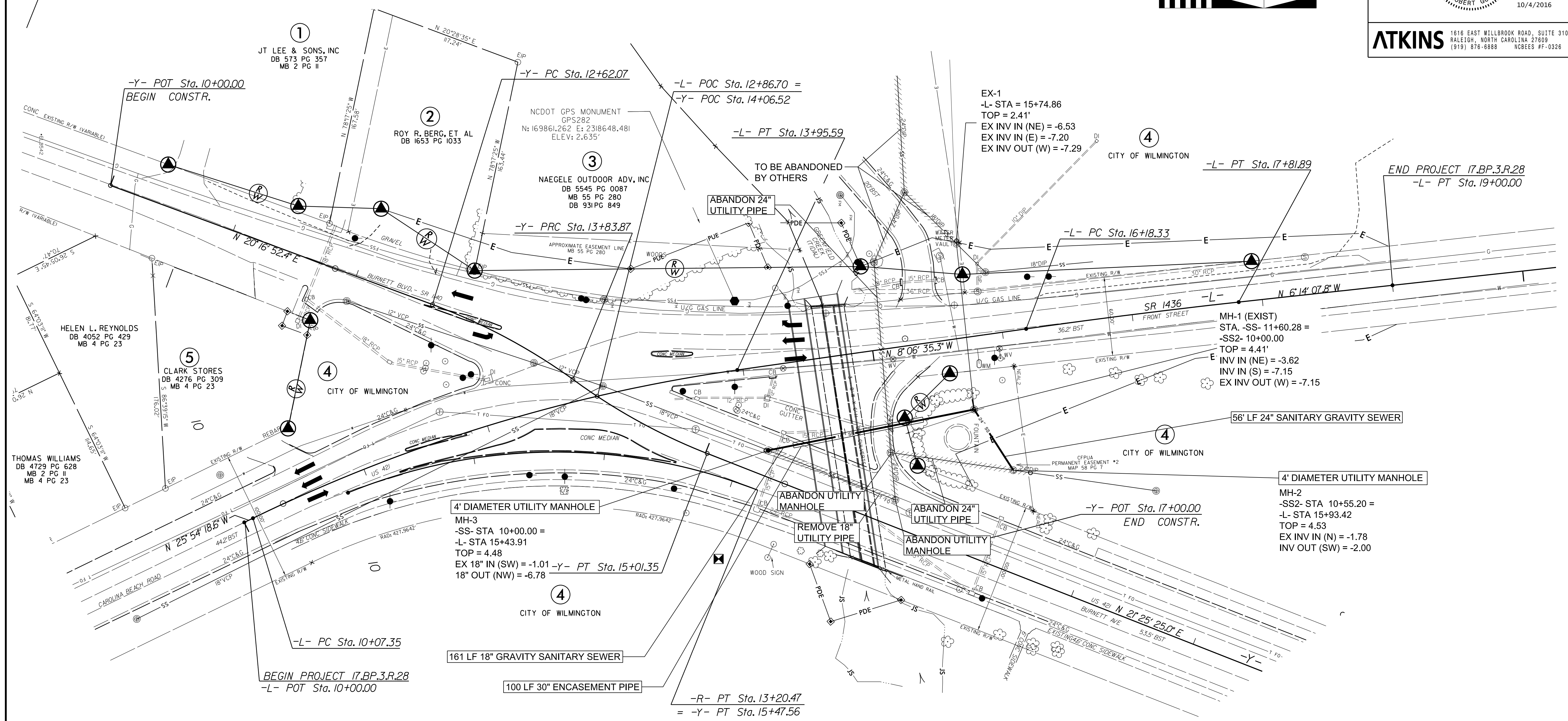
10/13/14

PROJECT REFERENCE NO. 17BP.3.R.28	SHEET NO. UC-4
RW SHEET NO.	
UTILITY ENGINEER	
	
10/4/2016	
	
<small>1616 EAST WILLOW ROAD, SUITE 310 RALEIGH, NORTH CAROLINA 27609 (919) 876-8888 NCEES #F-0326</small>	

NAD 83/NSRS 2007



# PROPOSED SANITARY SEWER CONSTRUCTION



### NOTES:

1. PROPOSED UTILITY CONSTRUCTION TO BE COMPLETED BEFORE CULVERT CONSTRUCTION BEGINS. SEE TMP SHEETS FOR CONSTRUCTION PHASING DETAILS.

SEE SHEET UC-6 FOR -SS- PROFILE

04-OCT-2016 11:58 AM R:\Projects\17BP.3.R.28\UC-4.dgn