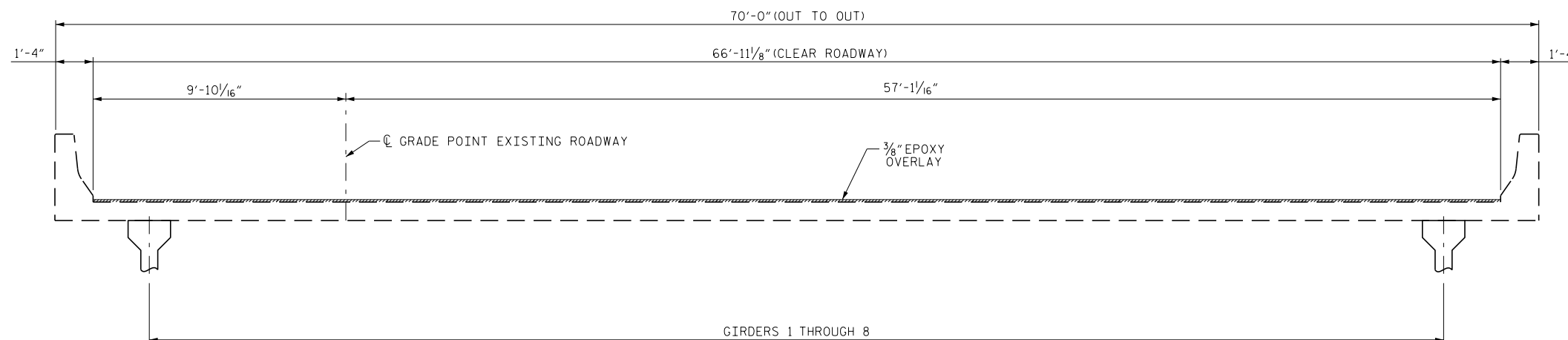
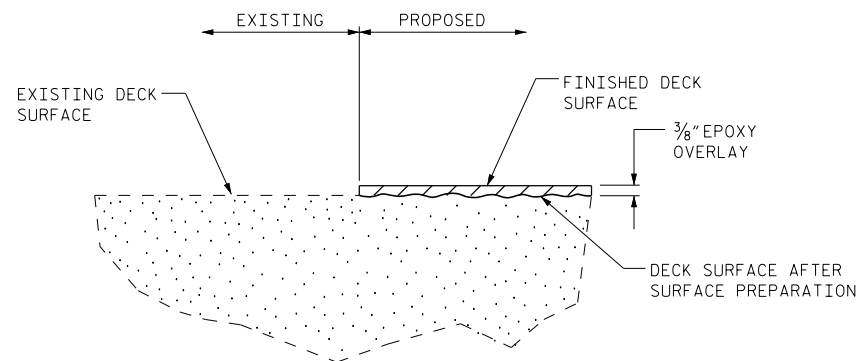


TYPICAL SECTION
 (EXISTING BRIDGE 922 NORTHBOUND LANE SHOWN -
 BRIDGE 923 SOUTHBOUND LANE SIMILAR BY ROTATION)



TYPICAL SECTION
 (EPOXY OVERLAY)



DETAIL OF EPOXY OVERLAY

PROJECT NO. I-5960
MECKLENBURG COUNTY
 BRIDGE NO. 922 & 923

DocuSigned by:
Farzin Asefina
 E068C400CAE457
 STATE OF NORTH CAROLINA
 PROFESSIONAL
 SEAL
 2013
 ENGINEER
 FARZIN ASEFINA
 7/28/2016

STATE OF NORTH CAROLINA
 DEPARTMENT OF TRANSPORTATION
 RALEIGH
**TYPICAL SECTIONS
 &
 EPOXY OVERLAY
 DETAIL**

DRAWN BY : M.K. BEARD DATE : 4/22/16
 CHECKED BY : W.C. SMITH DATE : 6/14/16

28-JUL-2016 16:10
 F:\15960\Structures\003.I5960.SMJ.S8.TS.922.923.DGN
 fosefrio

DOCUMENT NOT CONSIDERED
 FINAL UNLESS ALL
 SIGNATURES COMPLETED

REVISIONS						SHEET NO.
NO.	BY:	DATE:	NO.	BY:	DATE:	S-8
1			3			TOTAL SHEETS
2			4			11