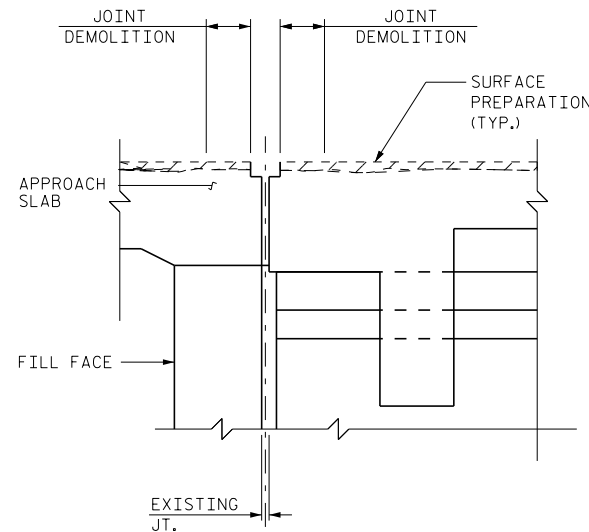
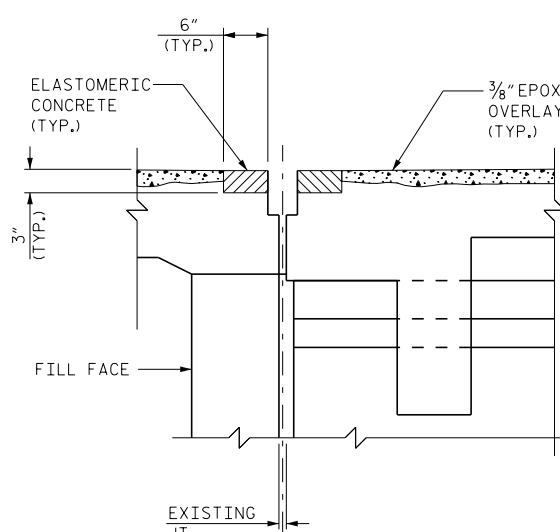


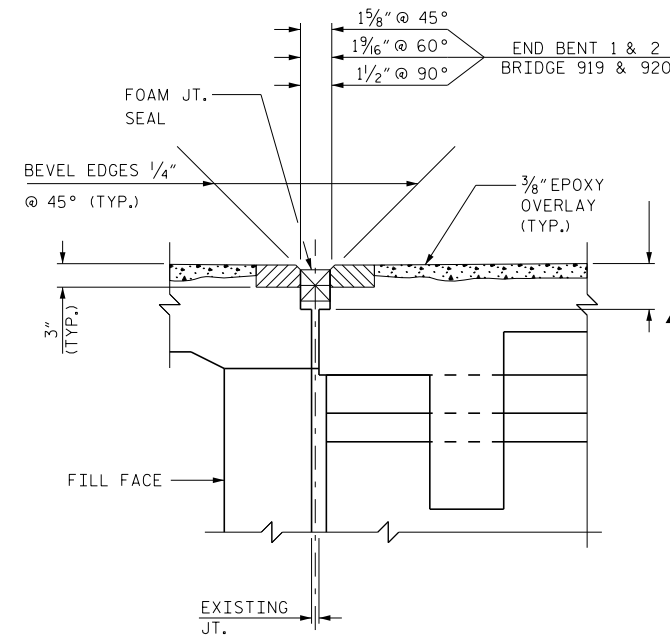
EXISTING JOINT



MINIMUM EXISTING JOINT DEMOLITION



PROPOSED JOINT

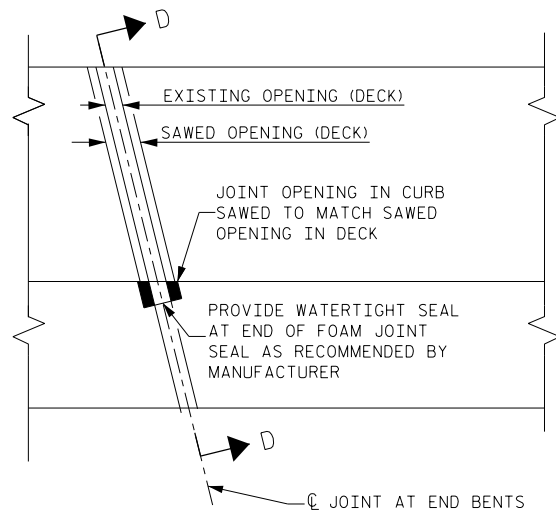


PROPOSED FOAM JOINT SEAL EXPANSION

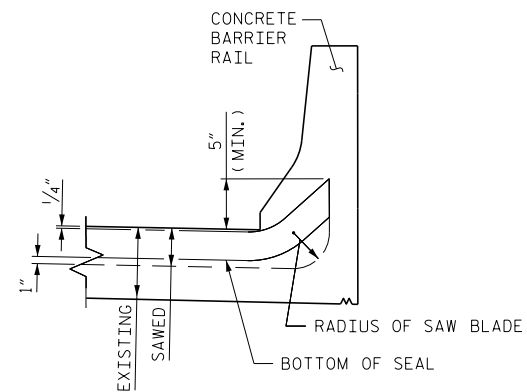
▲ SAW CUT SHALL BE 3/4" BELOW THE BOTTOM OF THE JOINT SEAL. SEE MANUFACTURER RECOMMENDATIONS

NOTES:
 CONTRACTOR SHALL FIELD VERIFY THE EXISTING FORMED OPENING PRIOR TO OBTAINING JOINT MATERIAL.
 FOR FOAM JOINT SEALS, SEE SPECIAL PROVISIONS.
 FOR ELASTOMERIC CONCRETE, SEE SPECIAL PROVISIONS.
 RETAIN ALL EXISTING REINFORCING STEEL, CLEAN AND REPAIR AS NEEDED.
 THE WIDTH OF THE UNCOMPRESSED FOAM JOINT MATERIAL SHALL BE 2".

JOINT INSTALLATION SEQUENCE AT END BENTS
 SECTION A-A



PLAN



SECTION D-D

PROJECT NO. I-5960
 MECKLENBURG COUNTY
 BRIDGE NO.: 919 & 920

DocuSigned by:
 Farzin Asefina
 E06B6400C4AC16
 STATE OF NORTH CAROLINA
 PROFESSIONAL ENGINEER
 SEAL 20103
 FARZIN ASEFINA
 7/28/2016

STATE OF NORTH CAROLINA
 DEPARTMENT OF TRANSPORTATION
 RALEIGH
 SUPERSTRUCTURE
 JOINT DETAILS

DRAWN BY : M.K. BEARD DATE : 4/20/16
 CHECKED BY : W. SMITH DATE : 7/19/16

REVISIONS						SHEET NO.
NO.	BY:	DATE:	NO.	BY:	DATE:	S-6
1			3			TOTAL SHEETS
2			4			11