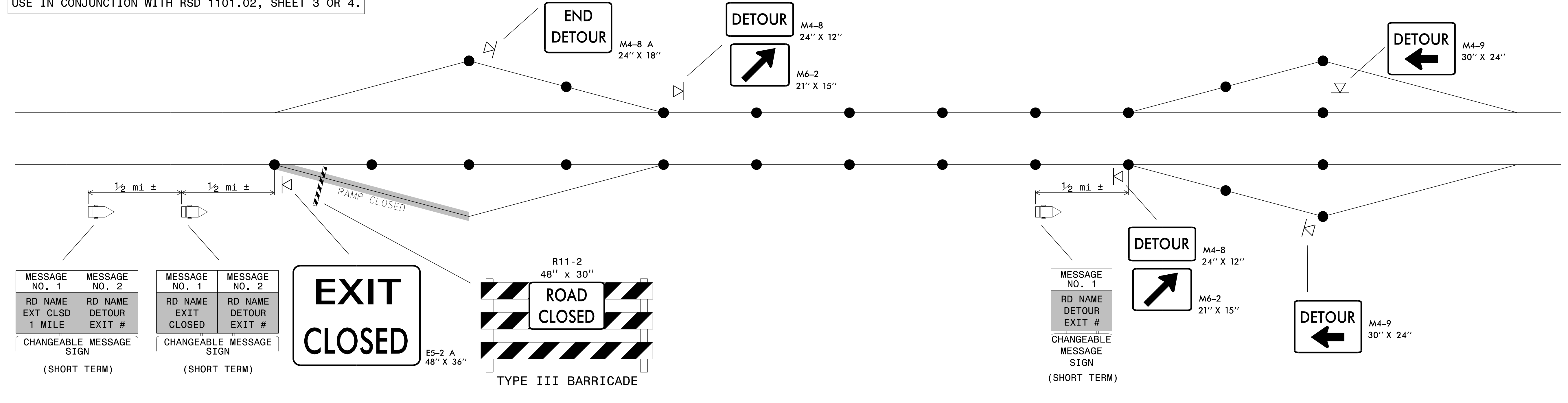


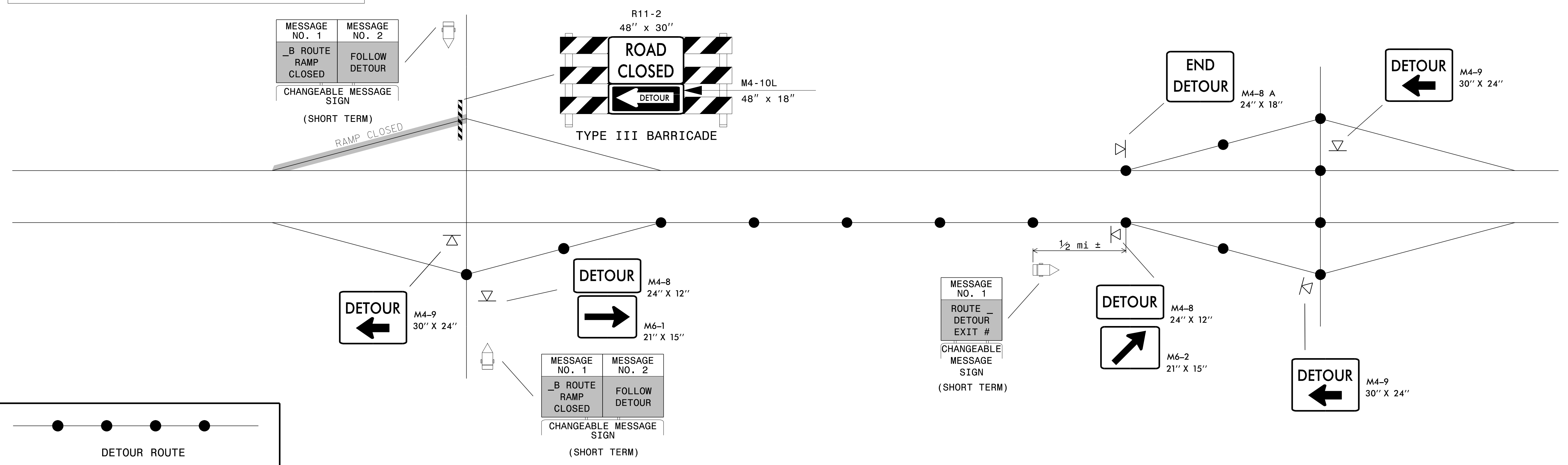
SHORT TERM CLOSURE AND DETOUR OF OFF-RAMP TO ADJACENT INTERCHANGE

USE IN CONJUNCTION WITH RSD 1101.02, SHEET 3 OR 4.



SHORT TERM CLOSURE AND DETOUR OF ON-RAMP TO ADJACENT INTERCHANGE

USE IN CONJUNCTION WITH RSD 1101.02, SHEET 3 OR 4.

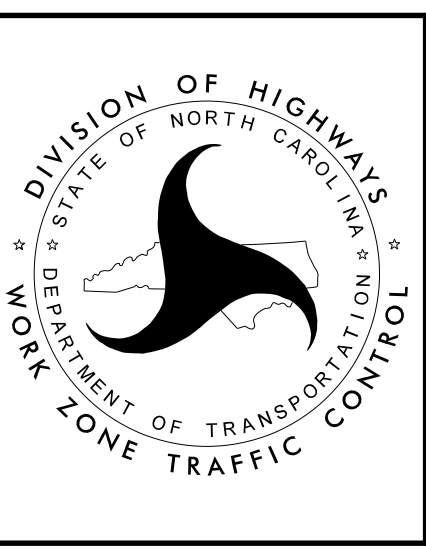


GENERAL NOTES:

1. THIS DRAWING IS INTENDED FOR USE DURING SHORT TERM CLOSURES OF INTERSTATE AND FREEWAY RAMPS.
2. RAMP CLOSURES SHALL BE APPROVED BY THE ENGINEER.
3. IF RAMP CLOSURE RESTRICTIONS APPLY, SEE SPECIAL PROVISION, "INTERMEDIATE CONTRACT TIMES AND LIQUIDATED DAMAGES".
4. ADDITIONAL CHANGEABLE MESSAGE SIGNS AND POSSIBLE DETOUR SIGNS MAY BE NECESSARY FOR MORE COMPLEX CLOSURES/DETOURS. COMPENSATION FOR ADDITIONAL DEVICES SHALL BE MADE BASED ON THE UNIT BID PRICE FOR THE RESPECTIVE DEVICE.

APPROVED: *Steve Kite*
 DATE: 7/25/2016

DOCUMENT NOT CONSIDERED FINAL
 UNLESS ALL SIGNATURES COMPLETED



**SHORT TERM CLOSURE
 AND DETOUR OF
 INTERSTATE/FREEWAY
 RAMPS**

7/19/2016 P:\TIP\Projects-N5960-TrafficControl\TCP\5960_TMP4_TypicalOff-Ramp_Detour.dgn User:keddis