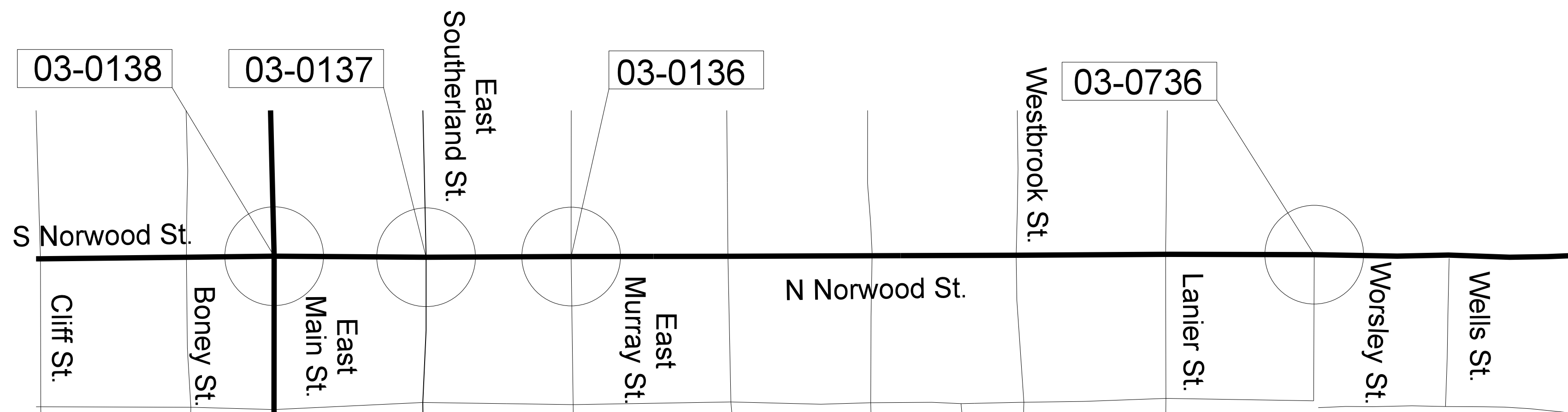
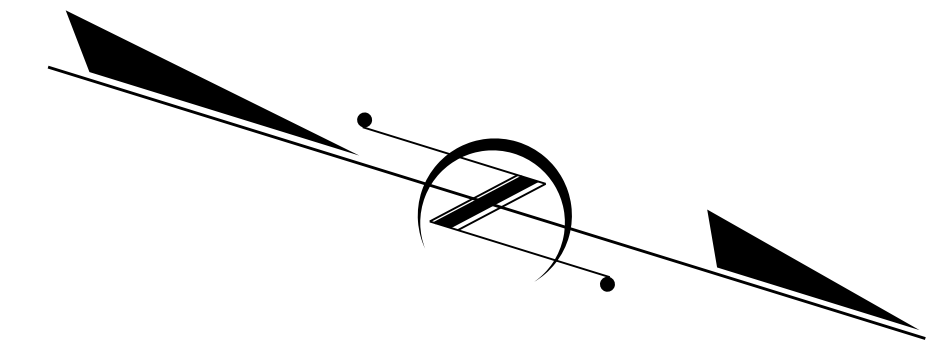
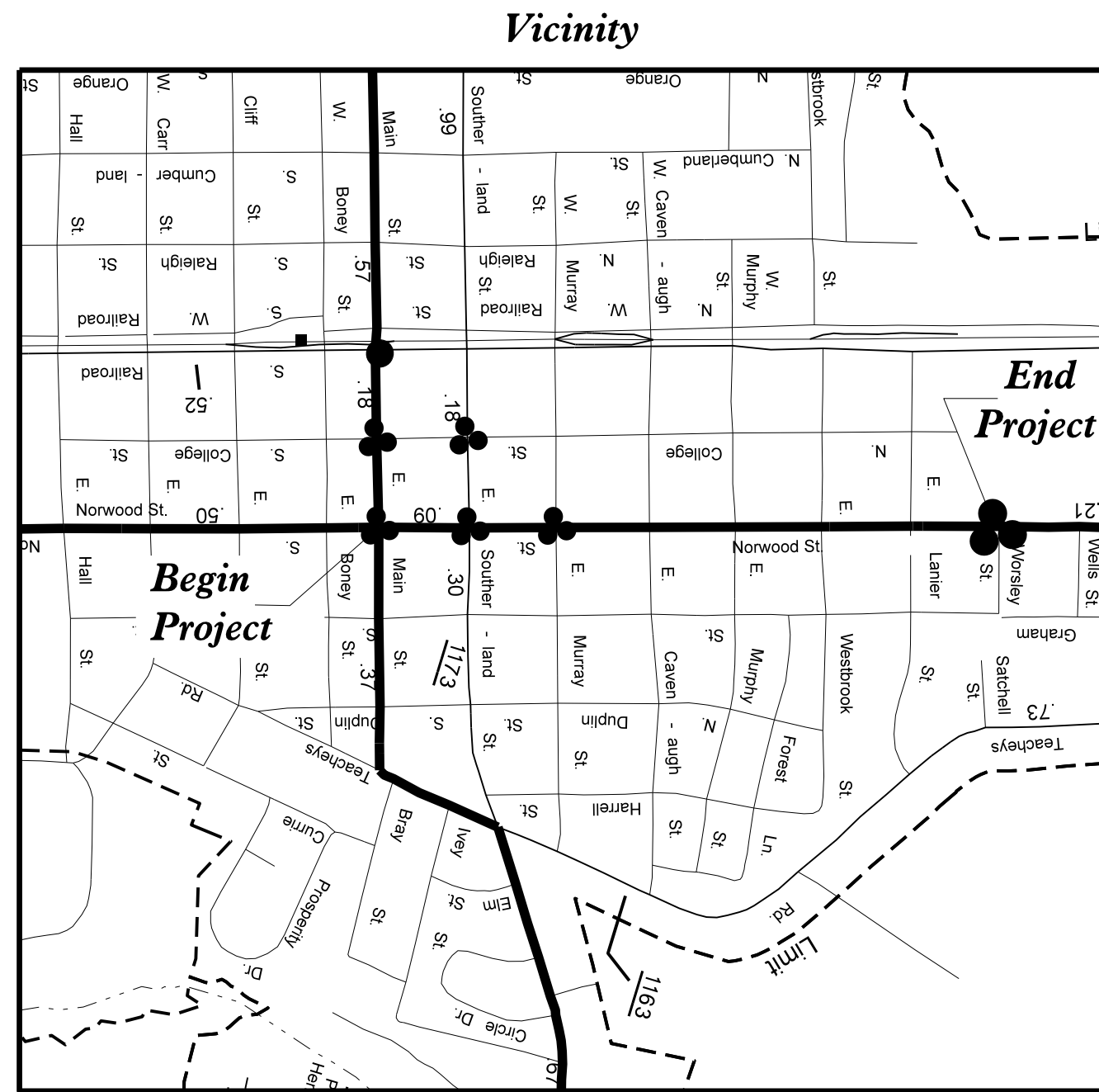


STATE OF NORTH CAROLINA
DIVISION OF HIGHWAYS

Duplin County

LOCATION: US 117 (Norwood Street) from NC 41 (Main Street) to Worsley Street / Wallace Crossing Shopping Center
TYPE OF WORK: TRAFFIC SIGNAL



Resurfacing Project: 2017CPT.03.04.10311

27-APR-2016 13:09 S:\155&50\115 Signals\Signal Design Section\Eastern Region\Div-03\Duplin Resurfacing\Title Sheet\Title Sheet.dgn

Refer to "Roadway Standard Drawings NCDOT" dated January 2012 and "Standard Specifications for Roads and Structures" dated January 2012.

Sheet #	Reference #	Index of Plans	Location/Description
Sig. 0.0	-----	Title Sheet	
Sig. 1.0-1.1	03-0138	US 117 (Norwood Street) at NC 41 (E Main Street)	
Sig. 2.0-2.4	03-0137	US 117 (N Norwood Street) at SR 1173 (E Southerland Street)	
Sig. 3.0-3.1	03-0136	US 117 (N Norwood Street) at East Murray Street	
Sig. 4.0-4.1	03-0736	US 117 (N Norwood Street) at Worsley Street / Wallace Crossing Shopping Center	

INTELLIGENT TRANSPORTATION AND SIGNALS UNIT

Contacts:

Pamela Alexander, PE - Eastern Region Signals Engineer
Keith M. Mims, PE - Signal Equipment Design Engineer

Prepared In the Office of:
DIVISION OF HIGHWAYS
TRANSPORTATION MOBILITY AND SAFETY
DIVISION

