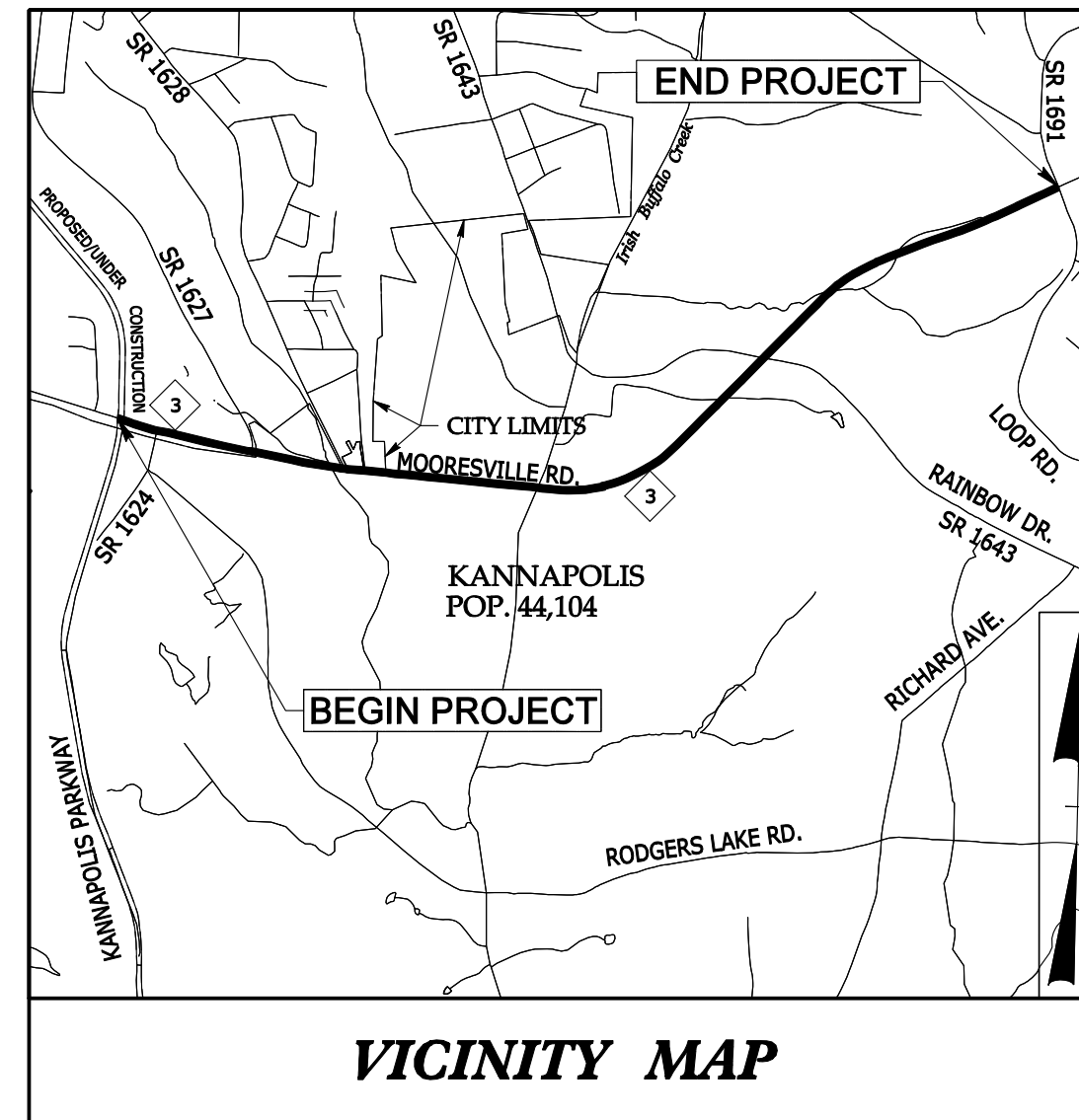


**TIP PROJECT: U-3440**



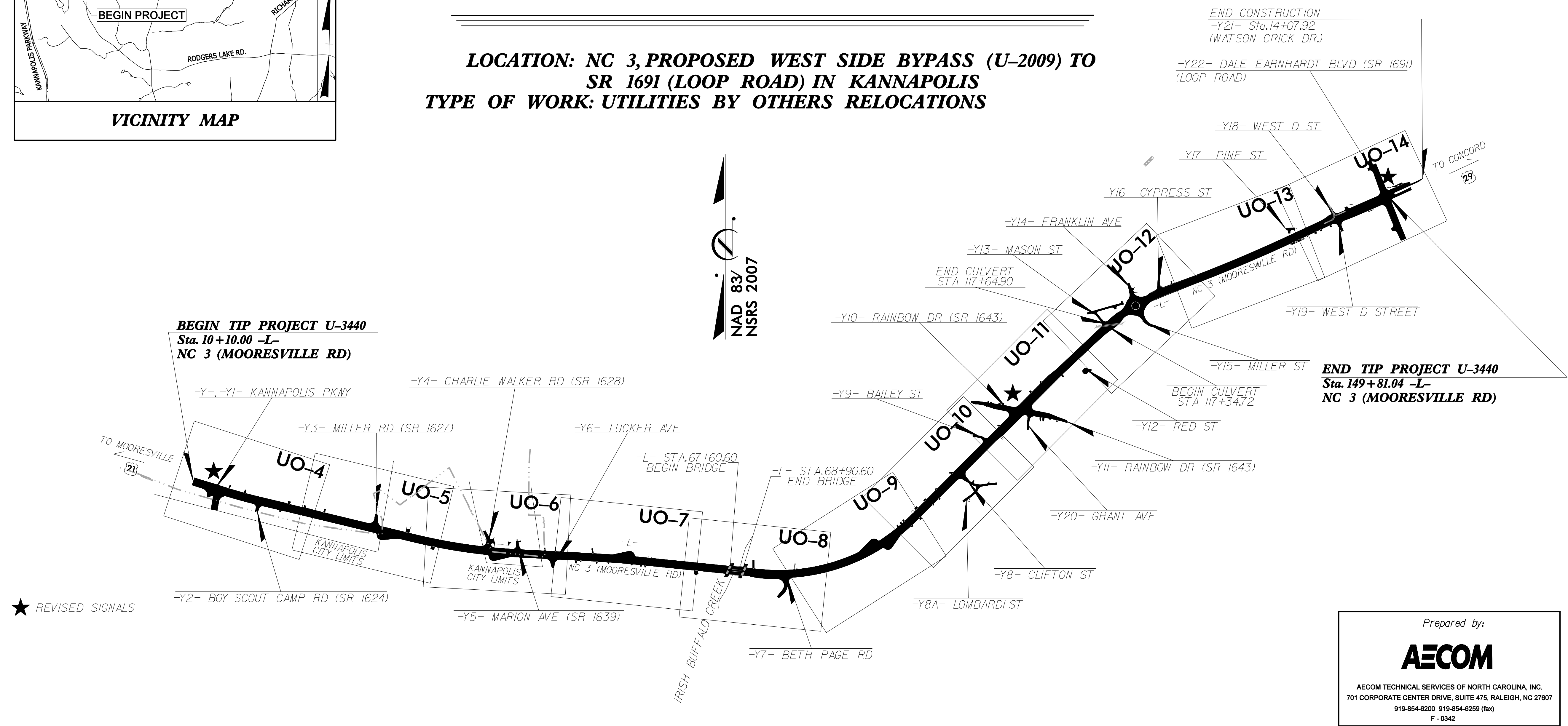
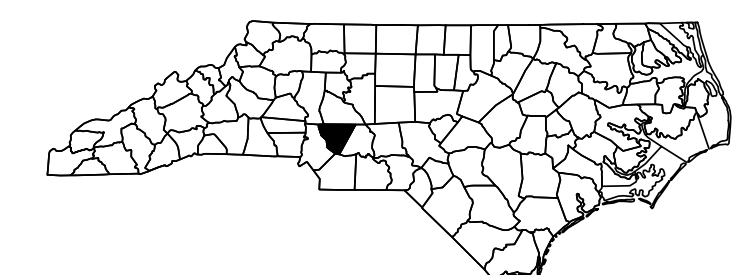
**VICINITY MAP**

STATE OF NORTH CAROLINA  
DIVISION OF HIGHWAYS

**UTILITIES BY OTHERS PLANS  
CABARRUS COUNTY**

**LOCATION: NC 3, PROPOSED WEST SIDE BYPASS (U-2009) TO  
SR 1691 (LOOP ROAD) IN KANNAPOLIS**  
**TYPE OF WORK: UTILITIES BY OTHERS RELOCATIONS**

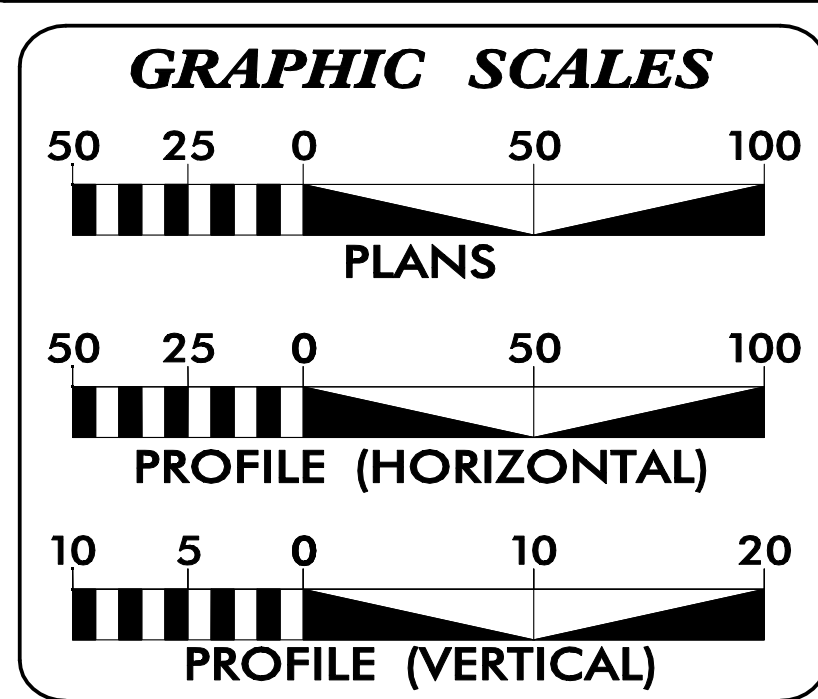
T.I.P. NO.	SHEET NO.
<b>U-3440</b>	<b>UO-1</b>



★ REVISED SIGNALS

Prepared by:  
**AECOM**  
AECOM TECHNICAL SERVICES OF NORTH CAROLINA, INC.  
701 CORPORATE CENTER DRIVE, SUITE 475, RALEIGH, NC 27607  
919-854-6200 919-854-6259 (fax)  
F - 0342

**CONTRACT:**



**INDEX OF SHEETS**

SHEET NO.	DESCRIPTION
UO-1	TITLE SHEET
UO-2	LEGEND OF SYMBOLS
UO-3	OMITTED
UO-4 THRU UO-14	UTILITY BY OTHERS PLAN SHEETS

**UTILITY OWNERS ON PROJECT**

(A) Duke Energy Progress - Power Distribution  
(B) Duke Energy Progress - Power Transmission  
(C) Windstream Lexicon - Telecom  
(D) TWC - CATV  
(E) PSNC - Natural Gas  
(F) MCNC - Telecom

PREPARED IN THE OFFICE OF:  
**DIVISION OF HIGHWAYS  
UTILITIES UNIT  
UTILITIES ENGINEERING**

1555 MAIL SERVICES CENTER  
RALEIGH, NC 27699-1555  
PHONE (919) 707-6600  
FAX (919) 250-4151

**Roger Worthington, P.E.** UTILITIES SECTION ENGINEER  
**Bo Hemphill, P.E.** UTILITIES SQUAD LEADER PROJECT ENGINEER  
**AECOM Tech. Services of NC** UTILITIES PROJECT DESIGNER

\$\$\$\$\$ SYSTEMS\$\$\$\$\$  
\$\$\$\$\$ DON\$\$\$\$\$  
\$\$\$\$\$ USERNAME\$\$\$\$\$

# STATE OF NORTH CAROLINA, DIVISION OF HIGHWAYS

## CONVENTIONAL PLAN SHEET SYMBOLS

*Note: Not to Scale*      \*S.U.E. = *Subsurface Utility Engineering*

### BOUNDARIES AND PROPERTY:

State Line	-----
County Line	-----
Township Line	-----
City Line	-----
Reservation Line	-----
Property Line	-----
Existing Iron Pin	○ EIP
Property Corner	→
Property Monument	□ ECM
Parcel/Sequence Number	②③
Existing Fence Line	-x-x-x-
Proposed Woven Wire Fence	○
Proposed Chain Link Fence	□
Proposed Barbed Wire Fence	◇
Existing Wetland Boundary	-WLB-
Proposed Wetland Boundary	WLB
Existing Endangered Animal Boundary	-EAB-
Existing Endangered Plant Boundary	-EPB-
Existing Historic Property Boundary	-HPB-
Known Contamination Area: Soil	-----
Potential Contamination Area: Soil	-----
Known Contamination Area: Water	-----
Potential Contamination Area: Water	-----
Contaminated Site: Known or Potential	☠ ☢

### BUILDINGS AND OTHER CULTURE:

Gas Pump Vent or U/G Tank Cap	○
Sign	○ S
Well	○ W
Small Mine	⚡
Foundation	□
Area Outline	□
Cemetery	⊕
Building	▭
School	▭
Church	⊕
Dam	▭

### HYDROLOGY:

Stream or Body of Water	~~~~~
Hydro, Pool or Reservoir	▭
Jurisdictional Stream	--- JS ---
Buffer Zone 1	--- BZ 1 ---
Buffer Zone 2	--- BZ 2 ---
Flow Arrow	←
Disappearing Stream	→
Spring	○
Wetland	▭
Proposed Lateral, Tail, Head Ditch	← FLD →
False Sump	▽

### RAILROADS:

Standard Gauge	-----
RR Signal Milepost	CSX TRANSPORTATION MILEPOST 35
Switch	SWITCH
RR Abandoned	-----
RR Dismantled	-----

### RIGHT OF WAY:

Baseline Control Point	◆
Existing Right of Way Marker	△
Existing Right of Way Line	-----
Proposed Right of Way Line	Ⓡ
Proposed Right of Way Line with Iron Pin and Cap Marker	Ⓡ ▲
Proposed Right of Way Line with Concrete or Granite R/W Marker	Ⓡ
Proposed Control of Access Line with Concrete CA Marker	Ⓡ
Existing Control of Access	Ⓡ
Proposed Control of Access	Ⓡ
Existing Easement Line	E
Proposed Temporary Construction Easement	E
Proposed Temporary Drainage Easement	TDE
Proposed Permanent Drainage Easement	PDE
Proposed Permanent Drainage / Utility Easement	DUE
Proposed Permanent Utility Easement	PUE
Proposed Temporary Utility Easement	TUE
Proposed Aerial Utility Easement	AUE
Proposed Permanent Easement with Iron Pin and Cap Marker	◆

### ROADS AND RELATED FEATURES:

Existing Edge of Pavement	-----
Existing Curb	-----
Proposed Slope Stakes Cut	C
Proposed Slope Stakes Fill	F
Proposed Curb Ramp	CR
Existing Metal Guardrail	-----
Proposed Guardrail	-----
Existing Cable Guiderail	-----
Proposed Cable Guiderail	-----
Equality Symbol	⊕
Pavement Removal	▨

### VEGETATION:

Single Tree	☼
Single Shrub	☼
Hedge	~~~~~
Woods Line	~~~~~

Orchard	☼ ☼ ☼ ☼
Vineyard	▭ Vineyard

### EXISTING STRUCTURES:

MAJOR:	
Bridge, Tunnel or Box Culvert	CONC
Bridge Wing Wall, Head Wall and End Wall	CONC WW
MINOR:	
Head and End Wall	CONC HW
Pipe Culvert	-----
Footbridge	-----
Drainage Box: Catch Basin, DI or JB	CB
Paved Ditch Gutter	-----
Storm Sewer Manhole	Ⓢ
Storm Sewer	S

### UTILITIES:

POWER:	
Existing Power Pole	●
Proposed Power Pole	○
Existing Joint Use Pole	●
Proposed Joint Use Pole	○
Power Manhole	Ⓢ
Power Line Tower	⊠
Power Transformer	⊠
U/G Power Cable Hand Hole	-----
H-Frame Pole	●
U/G Power Line LOS B (S.U.E.*)	----- P
U/G Power Line LOS C (S.U.E.*)	----- P
U/G Power Line LOS D (S.U.E.*)	----- P

### TELEPHONE:

Existing Telephone Pole	●
Proposed Telephone Pole	○
Telephone Manhole	Ⓢ
Telephone Pedestal	⊠
Telephone Cell Tower	⊠
U/G Telephone Cable Hand Hole	-----
U/G Telephone Cable LOS B (S.U.E.*)	----- T
U/G Telephone Cable LOS C (S.U.E.*)	----- T
U/G Telephone Cable LOS D (S.U.E.*)	----- T
U/G Telephone Conduit LOS B (S.U.E.*)	----- TC
U/G Telephone Conduit LOS C (S.U.E.*)	----- TC
U/G Telephone Conduit LOS D (S.U.E.*)	----- TC
U/G Fiber Optics Cable LOS B (S.U.E.*)	----- T FO
U/G Fiber Optics Cable LOS C (S.U.E.*)	----- T FO
U/G Fiber Optics Cable LOS D (S.U.E.*)	----- T FO

### WATER:

Water Manhole	Ⓢ
Water Meter	⊠
Water Valve	⊠
Water Hydrant	⊠
U/G Water Line LOS B (S.U.E.*)	----- W
U/G Water Line LOS C (S.U.E.*)	----- W
U/G Water Line LOS D (S.U.E.*)	----- W
Above Ground Water Line	A/G Water

### TV:

TV Pedestal	⊠
TV Tower	⊠
U/G TV Cable Hand Hole	-----
U/G TV Cable LOS B (S.U.E.*)	----- TV
U/G TV Cable LOS C (S.U.E.*)	----- TV
U/G TV Cable LOS D (S.U.E.*)	----- TV
U/G Fiber Optic Cable LOS B (S.U.E.*)	----- TV FO
U/G Fiber Optic Cable LOS C (S.U.E.*)	----- TV FO
U/G Fiber Optic Cable LOS D (S.U.E.*)	----- TV FO

### GAS:

Gas Valve	◇
Gas Meter	⊠
U/G Gas Line LOS B (S.U.E.*)	----- G
U/G Gas Line LOS C (S.U.E.*)	----- G
U/G Gas Line LOS D (S.U.E.*)	----- G
Above Ground Gas Line	A/G Gas

### SANITARY SEWER:

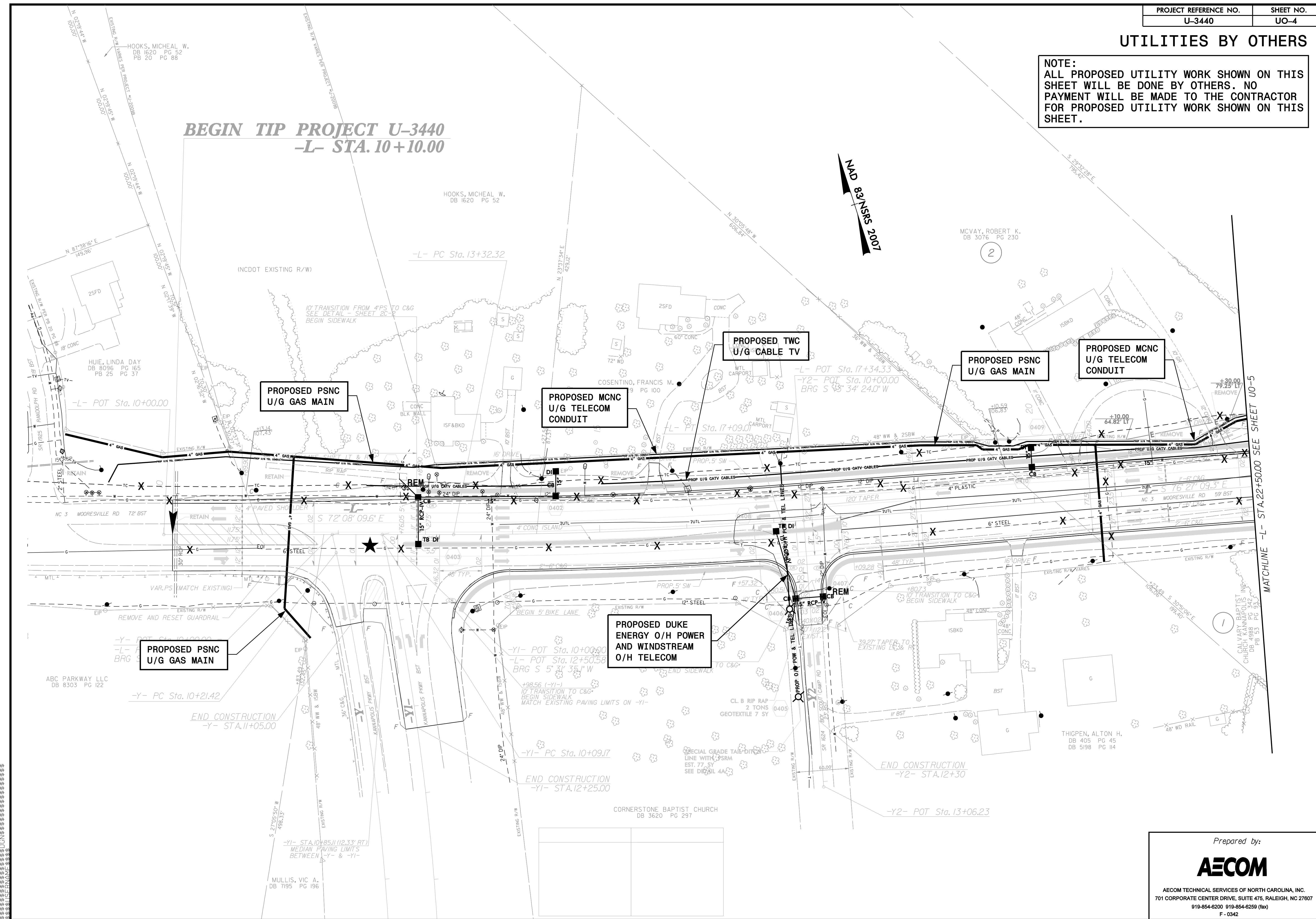
Sanitary Sewer Manhole	Ⓢ
Sanitary Sewer Cleanout	⊕
U/G Sanitary Sewer Line	----- SS
Above Ground Sanitary Sewer	A/G Sanitary Sewer
SS Forced Main Line LOS B (S.U.E.*)	----- FSS
SS Forced Main Line LOS C (S.U.E.*)	----- FSS
SS Forced Main Line LOS D (S.U.E.*)	----- FSS

### MISCELLANEOUS:

Utility Pole	●
Utility Pole with Base	⊠
Utility Located Object	○
Utility Traffic Signal Box	⊠
Utility Unknown U/G Line LOS B (S.U.E.*)	----- UTL
U/G Tank; Water, Gas, Oil	▭
Underground Storage Tank, Approx. Loc.	UST
A/G Tank; Water, Gas, Oil	▭
Geoenvironmental Boring	⊠
U/G Test Hole LOS A (S.U.E.*)	⊠
Abandoned According to Utility Records	AATUR
End of Information	E.O.I.

### UTILITIES BY OTHERS

**NOTE:**  
 ALL PROPOSED UTILITY WORK SHOWN ON THIS SHEET WILL BE DONE BY OTHERS. NO PAYMENT WILL BE MADE TO THE CONTRACTOR FOR PROPOSED UTILITY WORK SHOWN ON THIS SHEET.



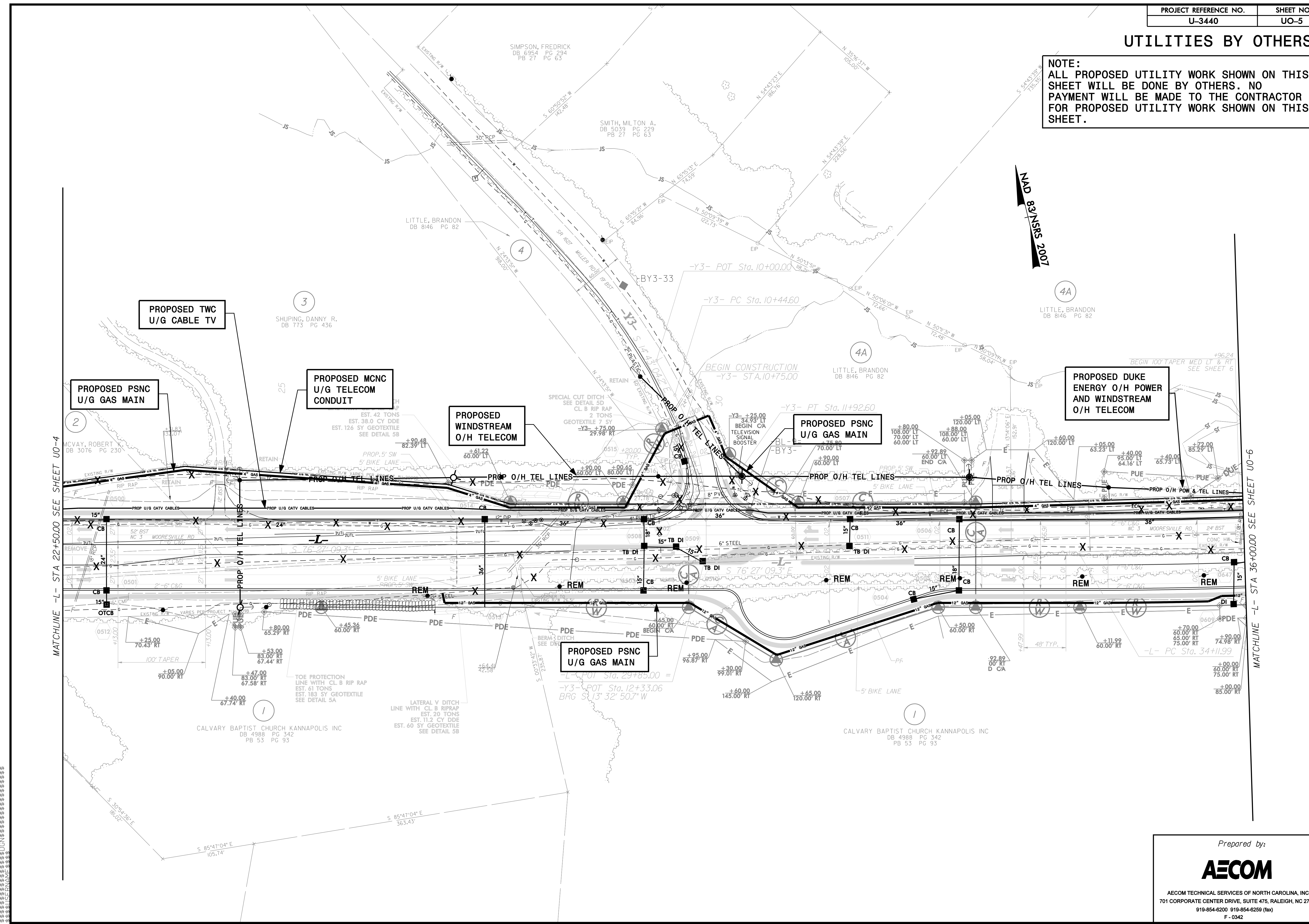
Prepared by:



AECOM TECHNICAL SERVICES OF NORTH CAROLINA, INC.  
 701 CORPORATE CENTER DRIVE, SUITE 475, RALEIGH, NC 27607  
 919-854-6200 919-854-6259 (fax)  
 F - 0342

### UTILITIES BY OTHERS

**NOTE:**  
 ALL PROPOSED UTILITY WORK SHOWN ON THIS SHEET WILL BE DONE BY OTHERS. NO PAYMENT WILL BE MADE TO THE CONTRACTOR FOR PROPOSED UTILITY WORK SHOWN ON THIS SHEET.



MATCHLINE -L- STA 22+50.00 SEE SHEET UO-4

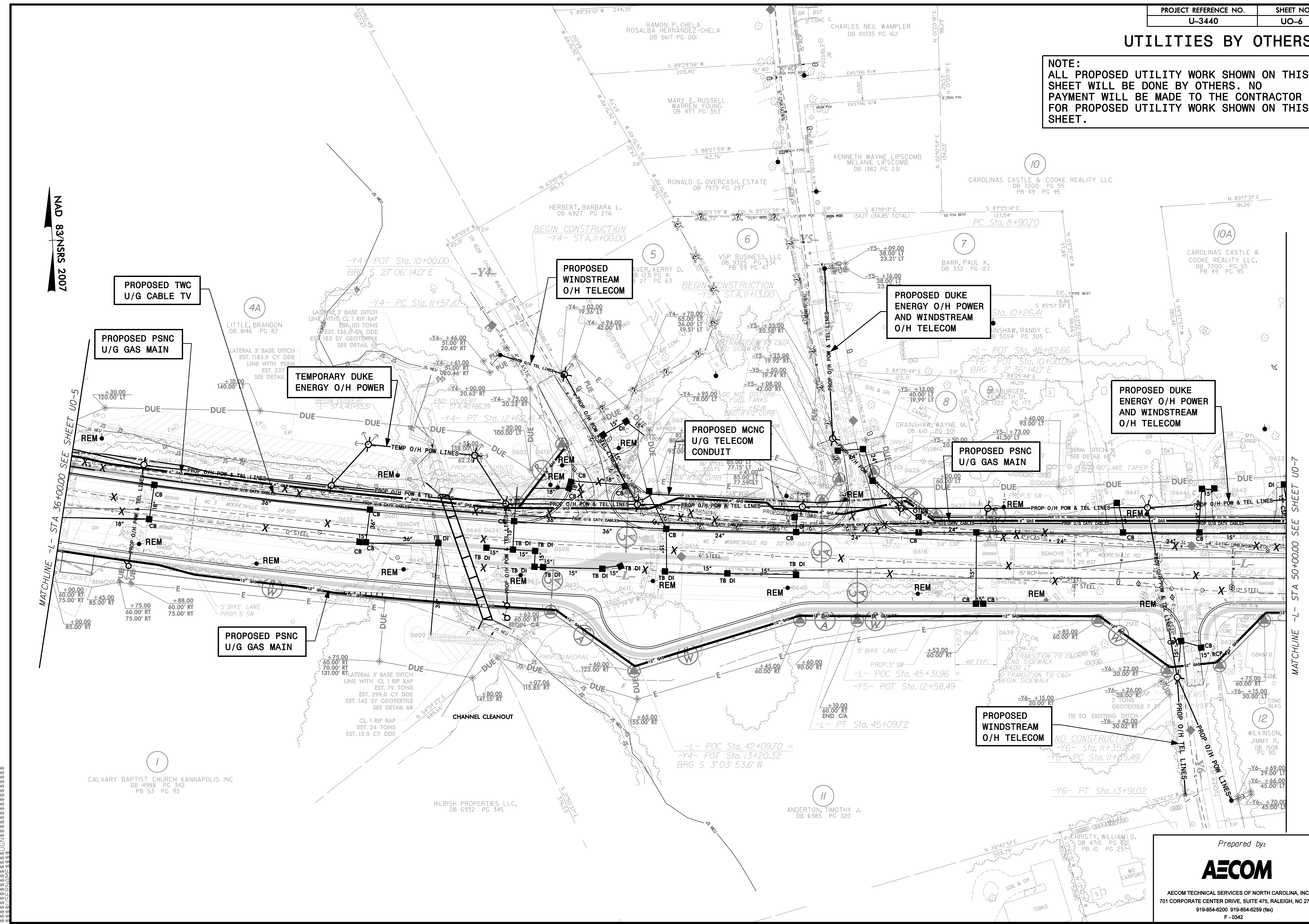
MATCHLINE -L- STA 36+00.00 SEE SHEET UO-6

NAD 83/NSRS 2007

# UTILITIES BY OTHERS

**NOTE:**  
 ALL PROPOSED UTILITY WORK SHOWN ON THIS SHEET WILL BE DONE BY OTHERS. NO PAYMENT WILL BE MADE TO THE CONTRACTOR FOR PROPOSED UTILITY WORK SHOWN ON THIS SHEET.

NAD 83/NSRS 2007



MATCHLINE -L- STA 16+00.00 SEE SHEET UO-5

MATCHLINE -L- STA 50+00.00 SEE SHEET UO-7

CALVARY BAPTIST CHURCH KANNAPOLIS INC  
 DB 4988 PG 342  
 PB 53 PG 93

HILBISH PROPERTIES LLC,  
 DB 6932 PG 345

ANDERTON, TIMOTHY J.  
 DB 6985 PG 320

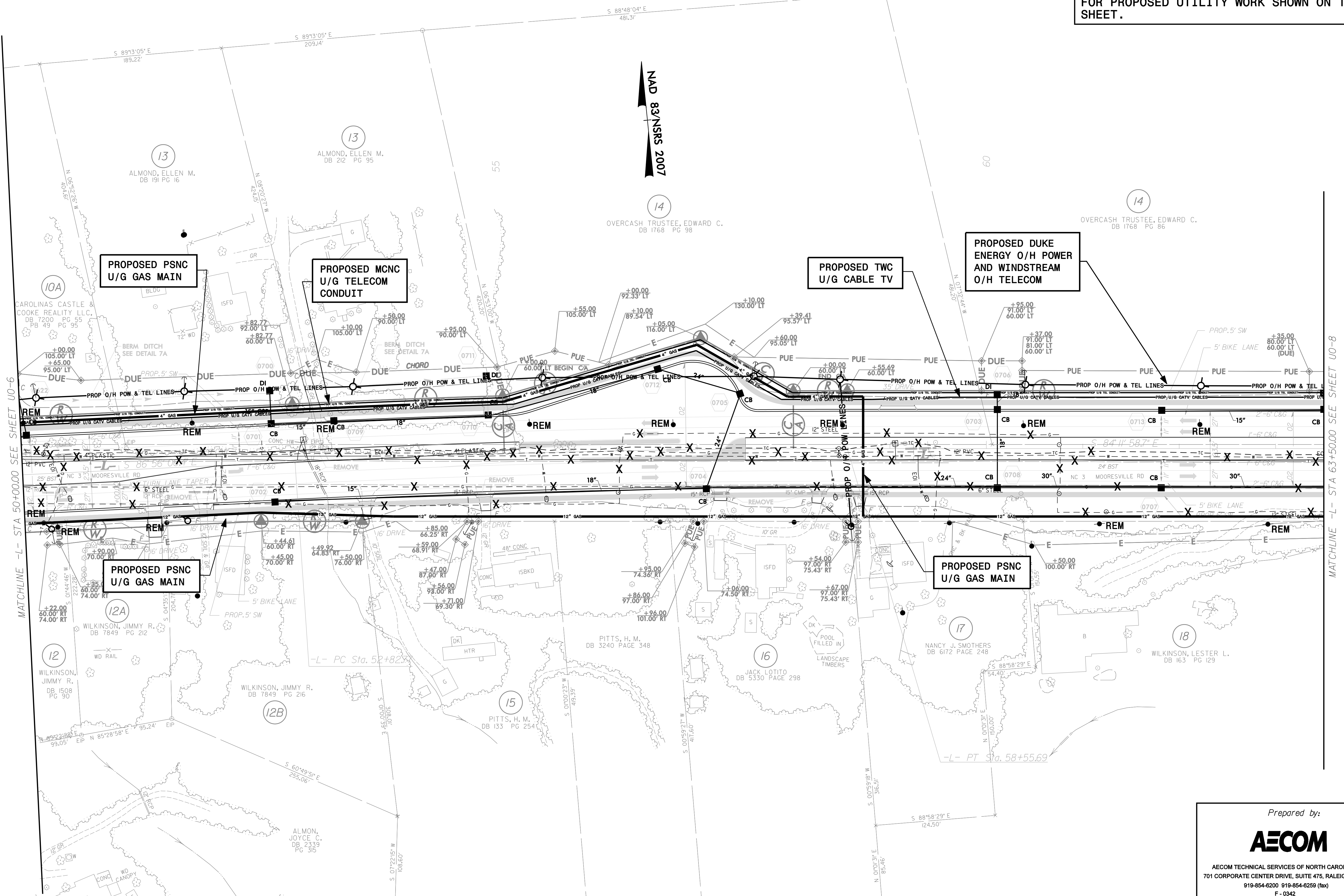
Prepared by:



AECOM TECHNICAL SERVICES OF NORTH CAROLINA, INC.  
 701 CORPORATE CENTER DRIVE, SUITE 475, RALEIGH, NC 27607  
 919-854-6200 919-854-6259 (fax)  
 F - 0342

### UTILITIES BY OTHERS

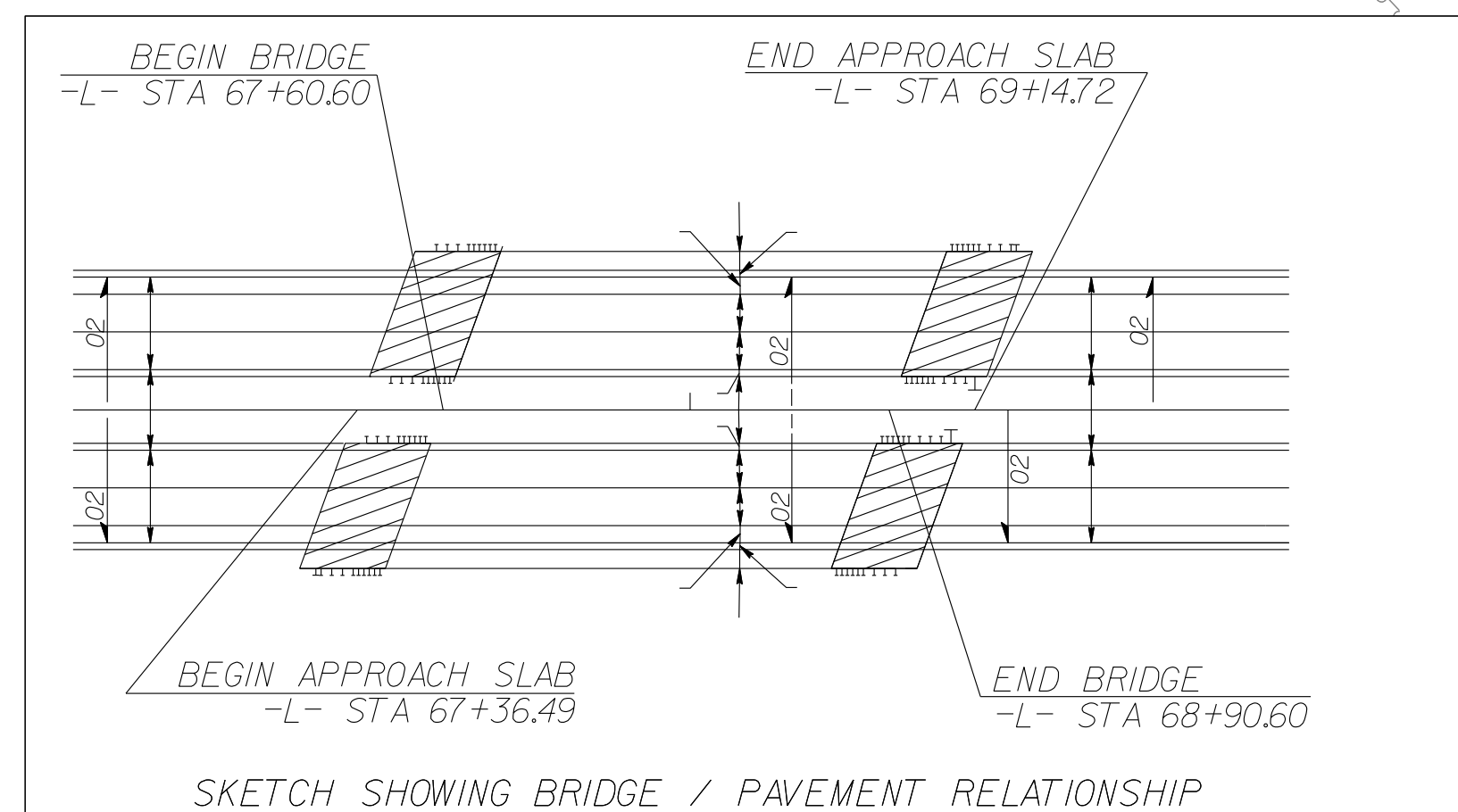
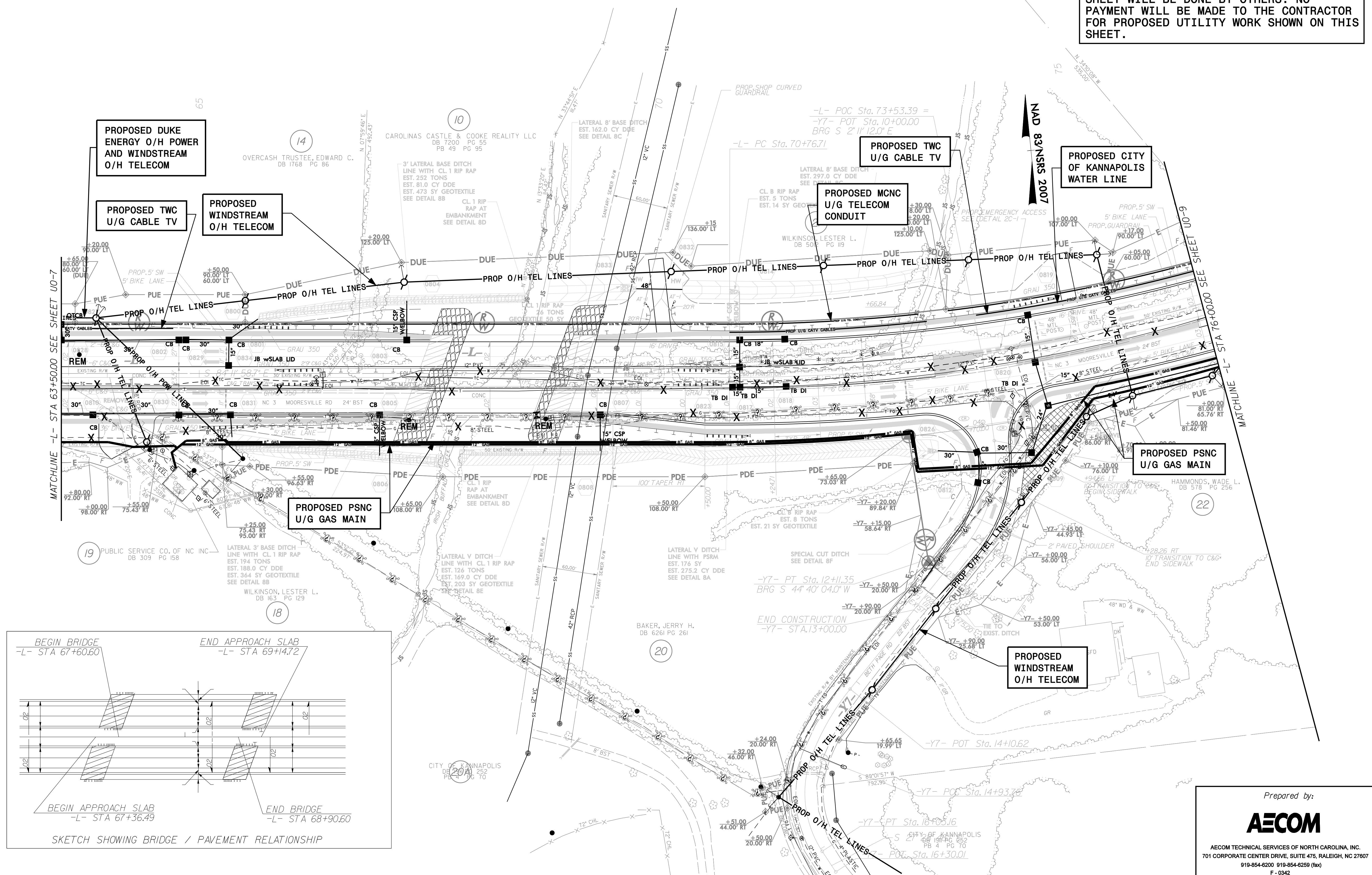
**NOTE:**  
 ALL PROPOSED UTILITY WORK SHOWN ON THIS SHEET WILL BE DONE BY OTHERS. NO PAYMENT WILL BE MADE TO THE CONTRACTOR FOR PROPOSED UTILITY WORK SHOWN ON THIS SHEET.



SYSTEMS  
 DESIGN  
 CONSULTING  
 INC.

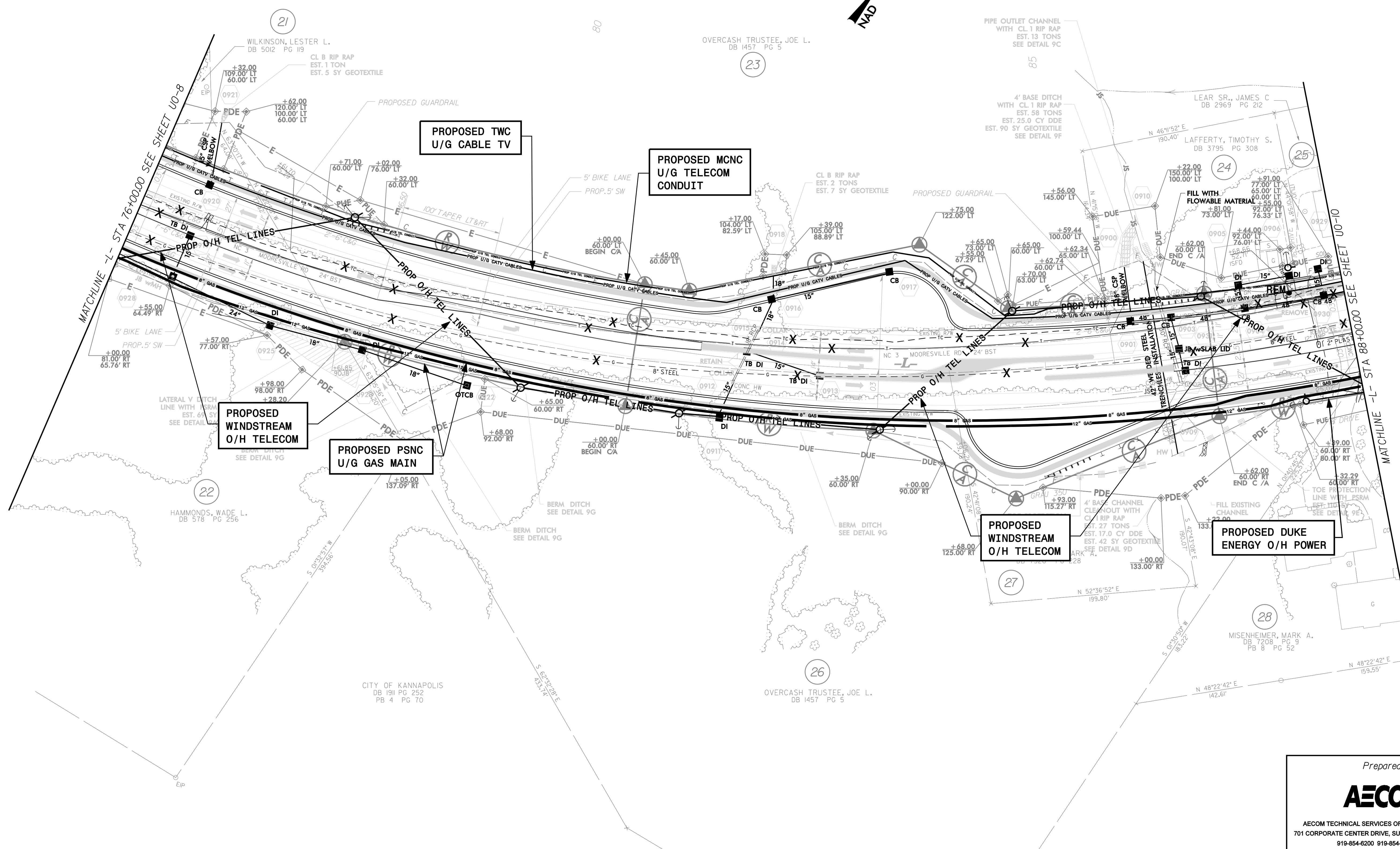
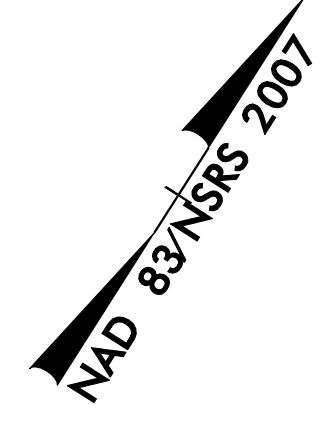
# UTILITIES BY OTHERS

**NOTE:**  
 ALL PROPOSED UTILITY WORK SHOWN ON THIS SHEET WILL BE DONE BY OTHERS. NO PAYMENT WILL BE MADE TO THE CONTRACTOR FOR PROPOSED UTILITY WORK SHOWN ON THIS SHEET.



### UTILITIES BY OTHERS

NOTE:  
ALL PROPOSED UTILITY WORK SHOWN ON THIS SHEET WILL BE DONE BY OTHERS. NO PAYMENT WILL BE MADE TO THE CONTRACTOR FOR PROPOSED UTILITY WORK SHOWN ON THIS SHEET.



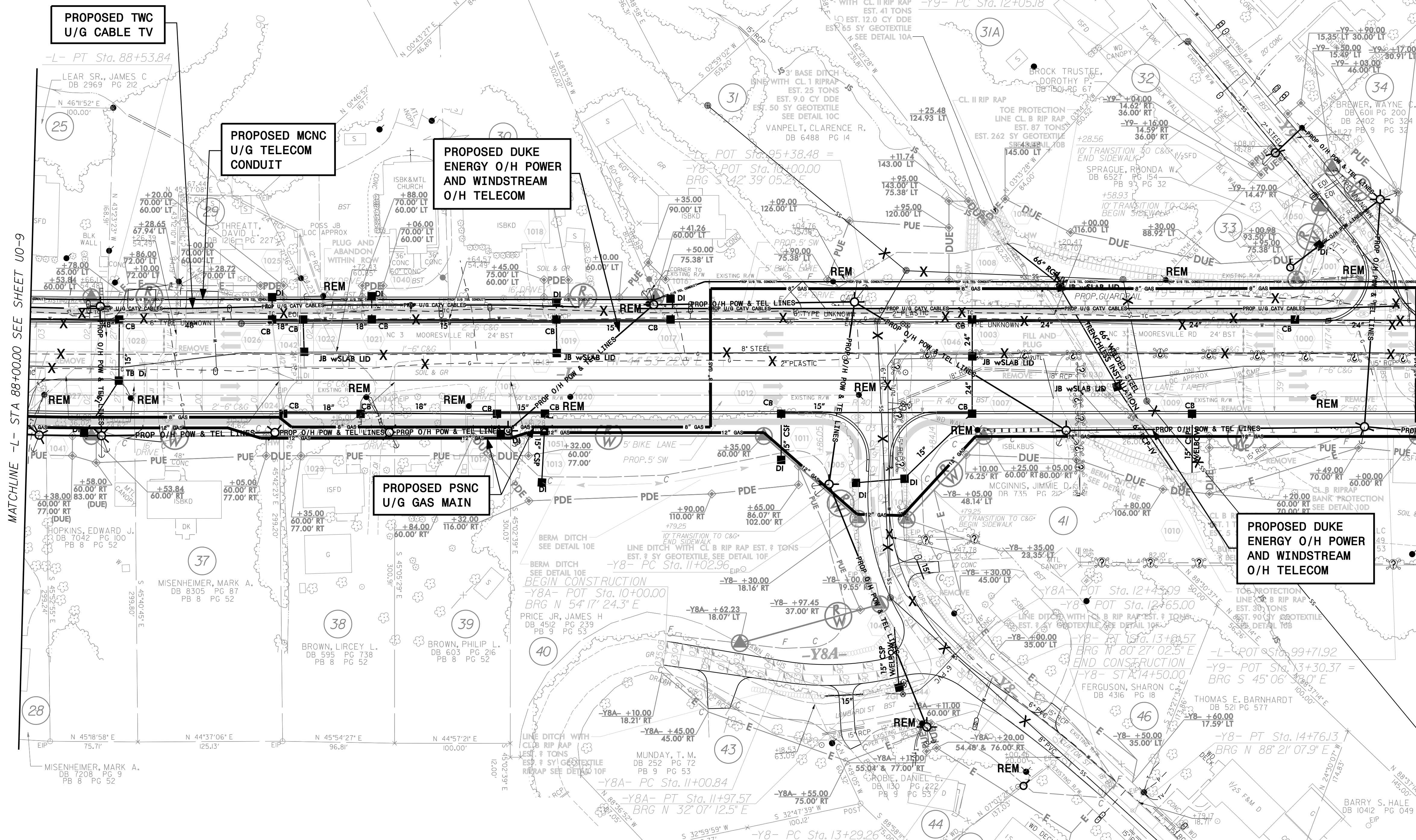
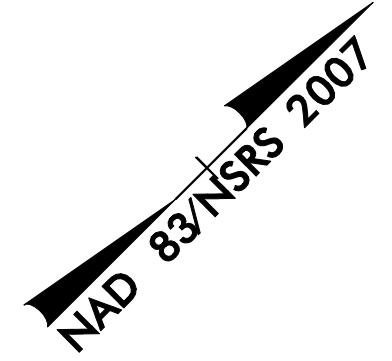
DATE PLOTTED: 08/27/2014 10:00 AM

Prepared by:  
**AECOM**  
AECOM TECHNICAL SERVICES OF NORTH CAROLINA, INC.  
701 CORPORATE CENTER DRIVE, SUITE 475, RALEIGH, NC 27607  
919-854-6200 919-854-6259 (fax)  
F - 0342



UTILITIES BY OTHERS

NOTE:  
ALL PROPOSED UTILITY WORK SHOWN ON THIS SHEET WILL BE DONE BY OTHERS. NO PAYMENT WILL BE MADE TO THE CONTRACTOR FOR PROPOSED UTILITY WORK SHOWN ON THIS SHEET.



MATCHLINE -L- STA 88+00.00 SEE SHEET UO-9

MATCHLINE -L- STA 100+00.00 SEE SHEET UO-11

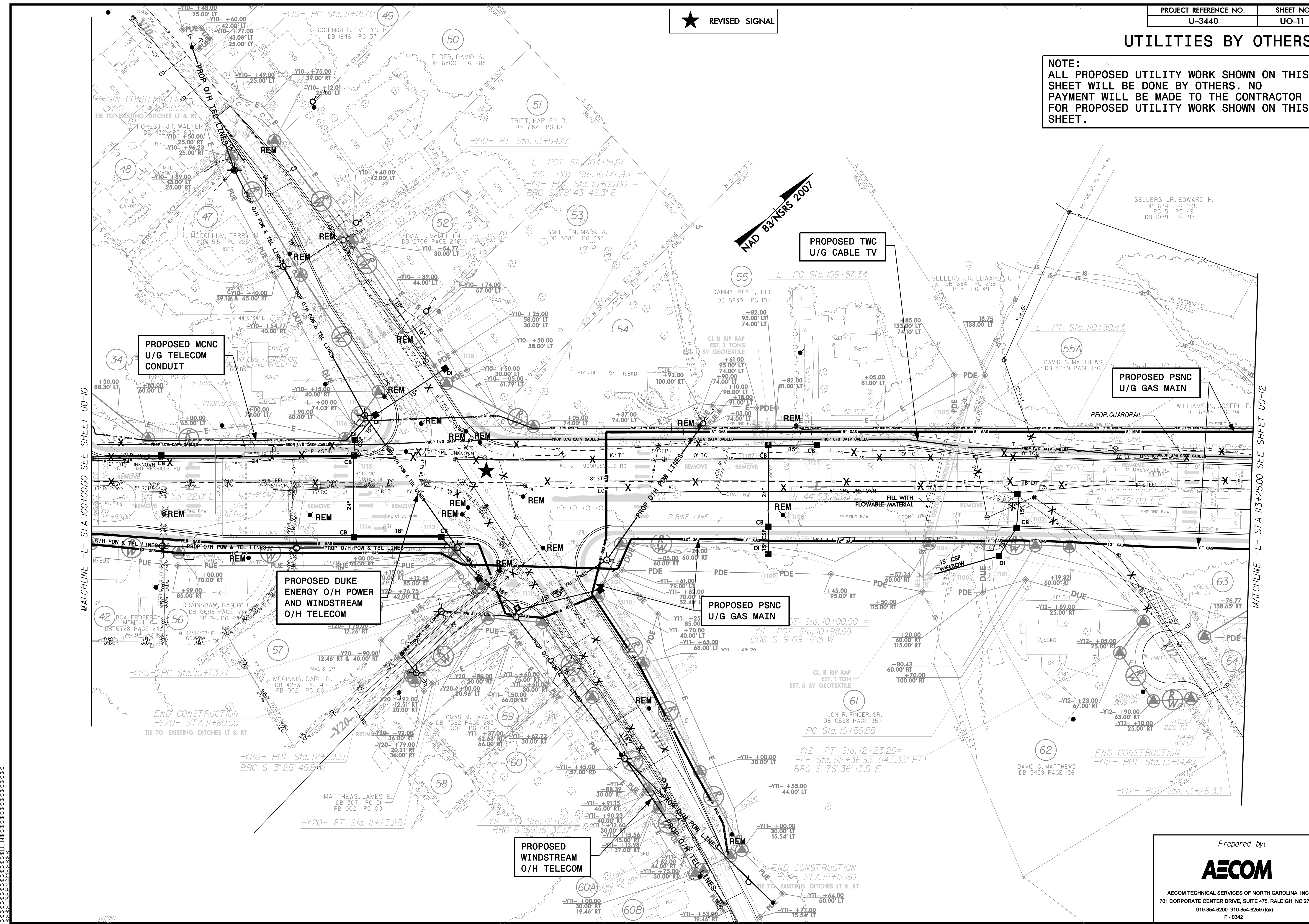
Prepared by:

**AECOM**

AECOM TECHNICAL SERVICES OF NORTH CAROLINA, INC.  
701 CORPORATE CENTER DRIVE, SUITE 475, RALEIGH, NC 27607  
919-854-6200 919-854-6259 (fax)  
F - 0342

## UTILITIES BY OTHERS

**NOTE:**  
 ALL PROPOSED UTILITY WORK SHOWN ON THIS SHEET WILL BE DONE BY OTHERS. NO PAYMENT WILL BE MADE TO THE CONTRACTOR FOR PROPOSED UTILITY WORK SHOWN ON THIS SHEET.



★ REVISED SIGNAL

NAD 83/NSRS 2007

MATCHLINE -L- STA 100+00.00 SEE SHEET UO-10

MATCHLINE -L- STA 113+25.00 SEE SHEET UO-12

**PROPOSED MCNC  
U/G TELECOM  
CONDUIT**

**PROPOSED TWC  
U/G CABLE TV**

**PROPOSED PSNC  
U/G GAS MAIN**

**PROPOSED DUKE  
ENERGY O/H POWER  
AND WINDSTREAM  
O/H TELECOM**

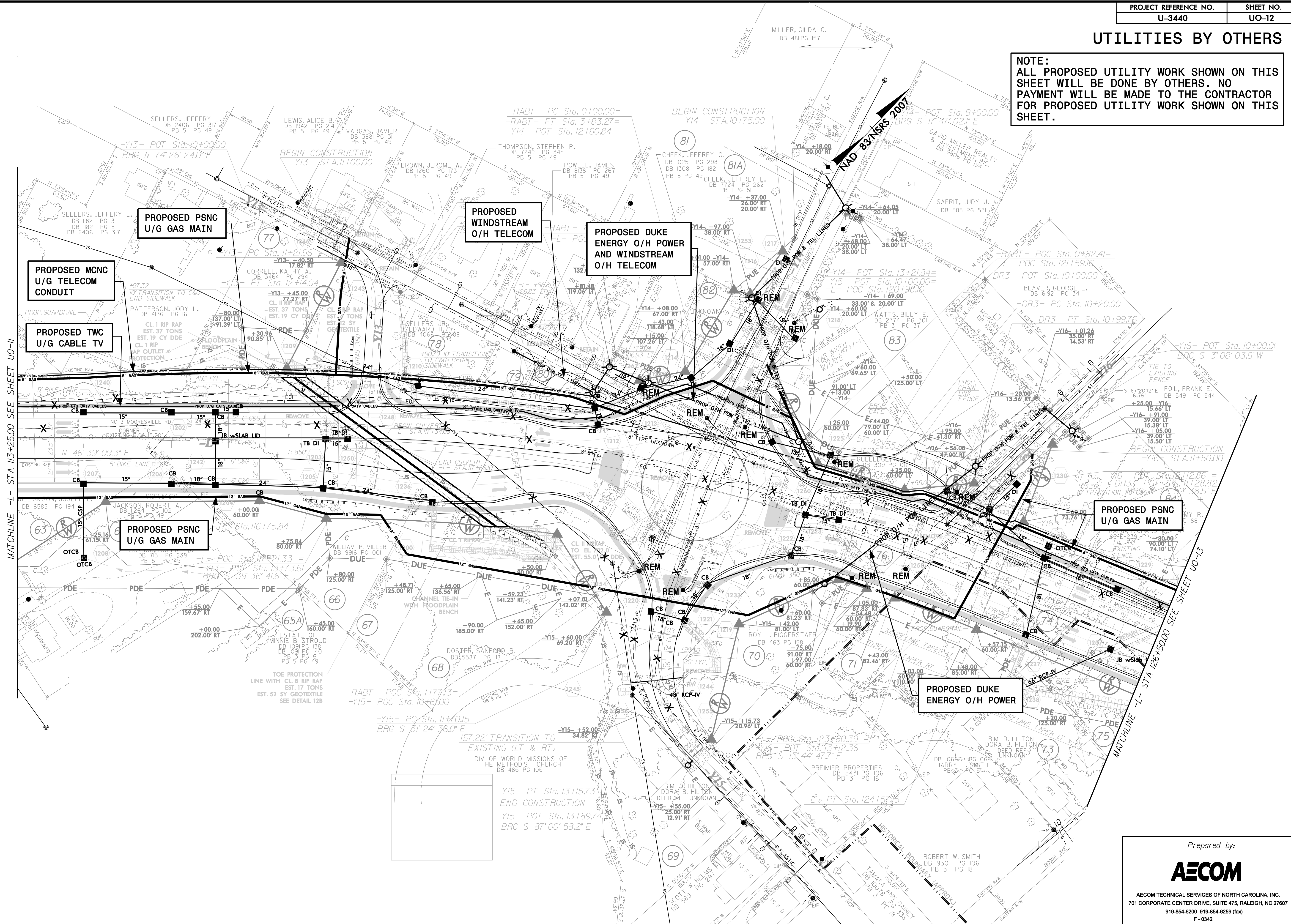
**PROPOSED PSNC  
U/G GAS MAIN**

**PROPOSED  
WINDSTREAM  
O/H TELECOM**

Prepared by:  
**AECOM**  
 AECOM TECHNICAL SERVICES OF NORTH CAROLINA, INC.  
 701 CORPORATE CENTER DRIVE, SUITE 475, RALEIGH, NC 27607  
 919-854-6200 919-854-6259 (fax)  
 F - 0342

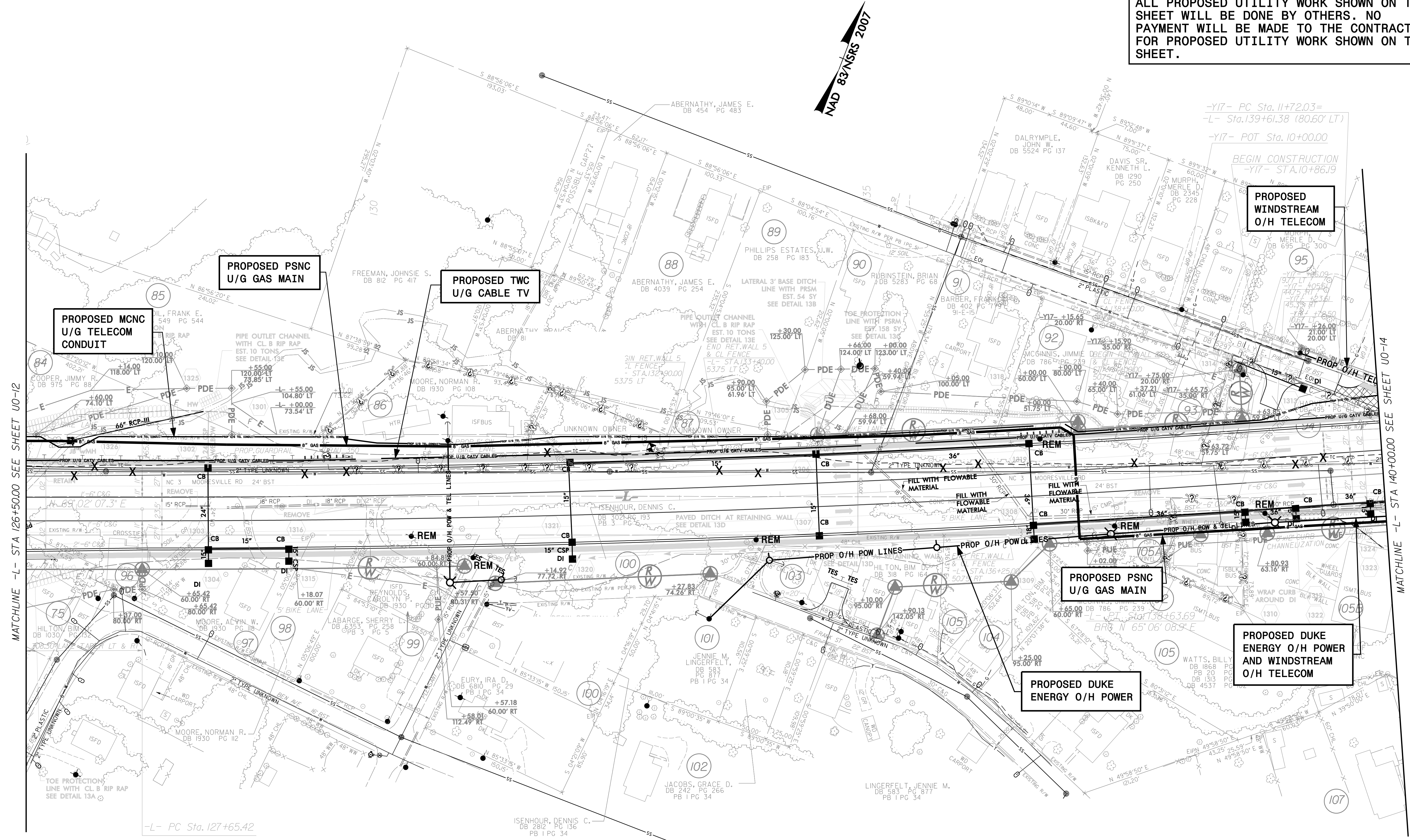
# UTILITIES BY OTHERS

**NOTE:**  
 ALL PROPOSED UTILITY WORK SHOWN ON THIS SHEET WILL BE DONE BY OTHERS. NO PAYMENT WILL BE MADE TO THE CONTRACTOR FOR PROPOSED UTILITY WORK SHOWN ON THIS SHEET.



## UTILITIES BY OTHERS

**NOTE:**  
 ALL PROPOSED UTILITY WORK SHOWN ON THIS SHEET WILL BE DONE BY OTHERS. NO PAYMENT WILL BE MADE TO THE CONTRACTOR FOR PROPOSED UTILITY WORK SHOWN ON THIS SHEET.



MATCHLINE -L- STA 126+50.00 SEE SHEET UO-12

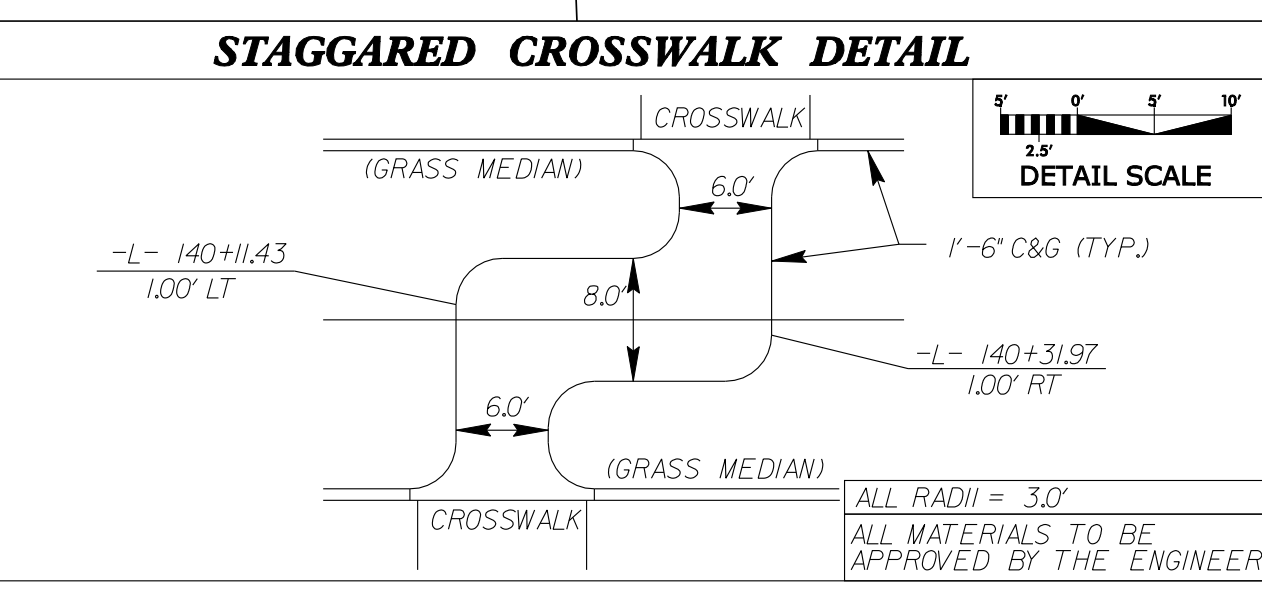
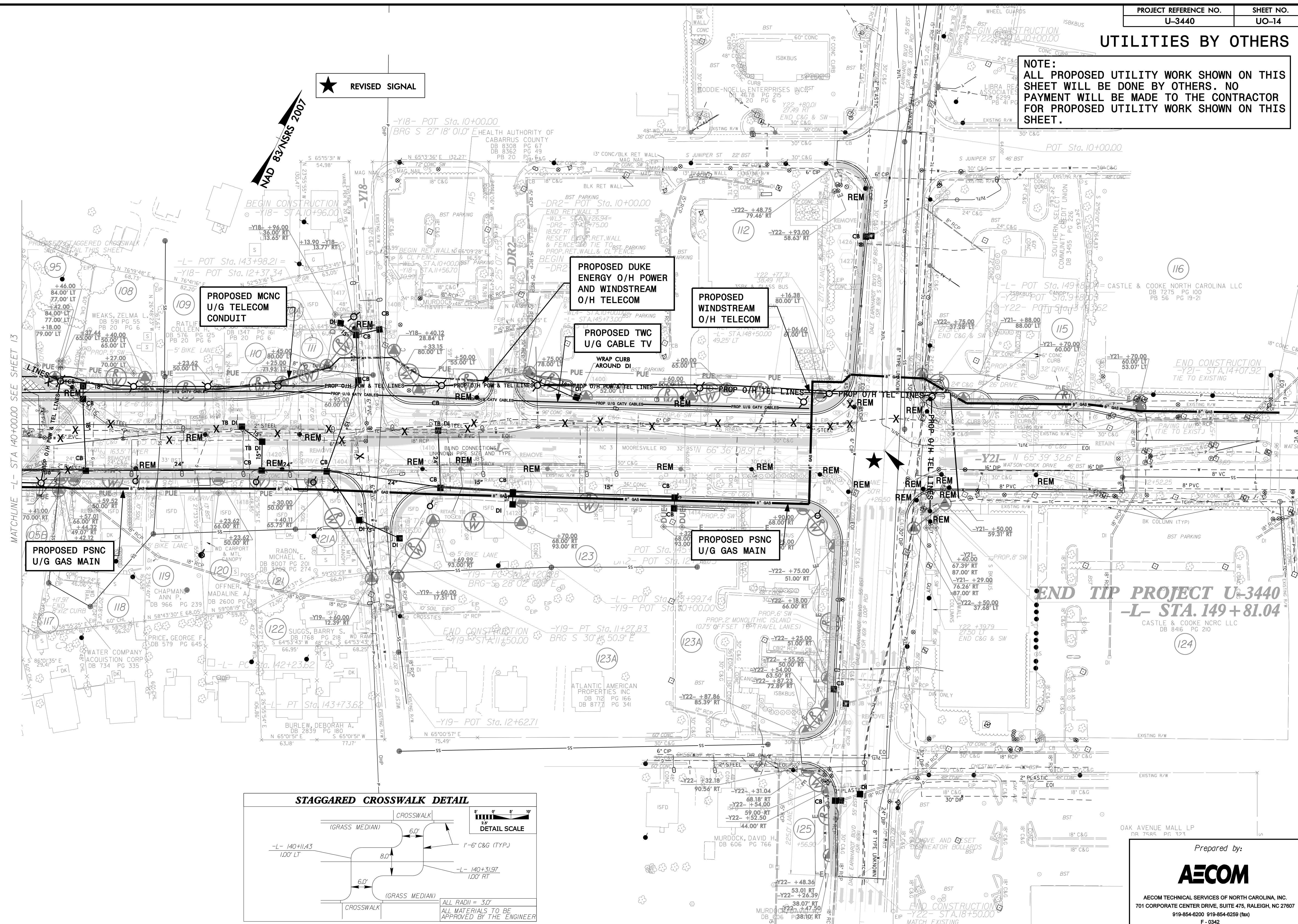
MATCHLINE -L- STA 140+00.00 SEE SHEET UO-14

-L- PC Sta. 127+65.42

ISENHOUR, DENNIS C.  
 DB 2812 PG 136  
 PB 1 PG 34

**UTILITIES BY OTHERS**

**NOTE:**  
 ALL PROPOSED UTILITY WORK SHOWN ON THIS SHEET WILL BE DONE BY OTHERS. NO PAYMENT WILL BE MADE TO THE CONTRACTOR FOR PROPOSED UTILITY WORK SHOWN ON THIS SHEET.



**END TIP PROJECT U-3440**  
**-L- STA. 149 + 81.04**  
 CASTLE & COOKE NCR LLC  
 DB 8416 PG 210

Prepared by:  
**AECOM**  
 AECOM TECHNICAL SERVICES OF NORTH CAROLINA, INC.  
 701 CORPORATE CENTER DRIVE, SUITE 475, RALEIGH, NC 27607  
 919-854-6200 919-854-6259 (fax)  
 F - 0342