

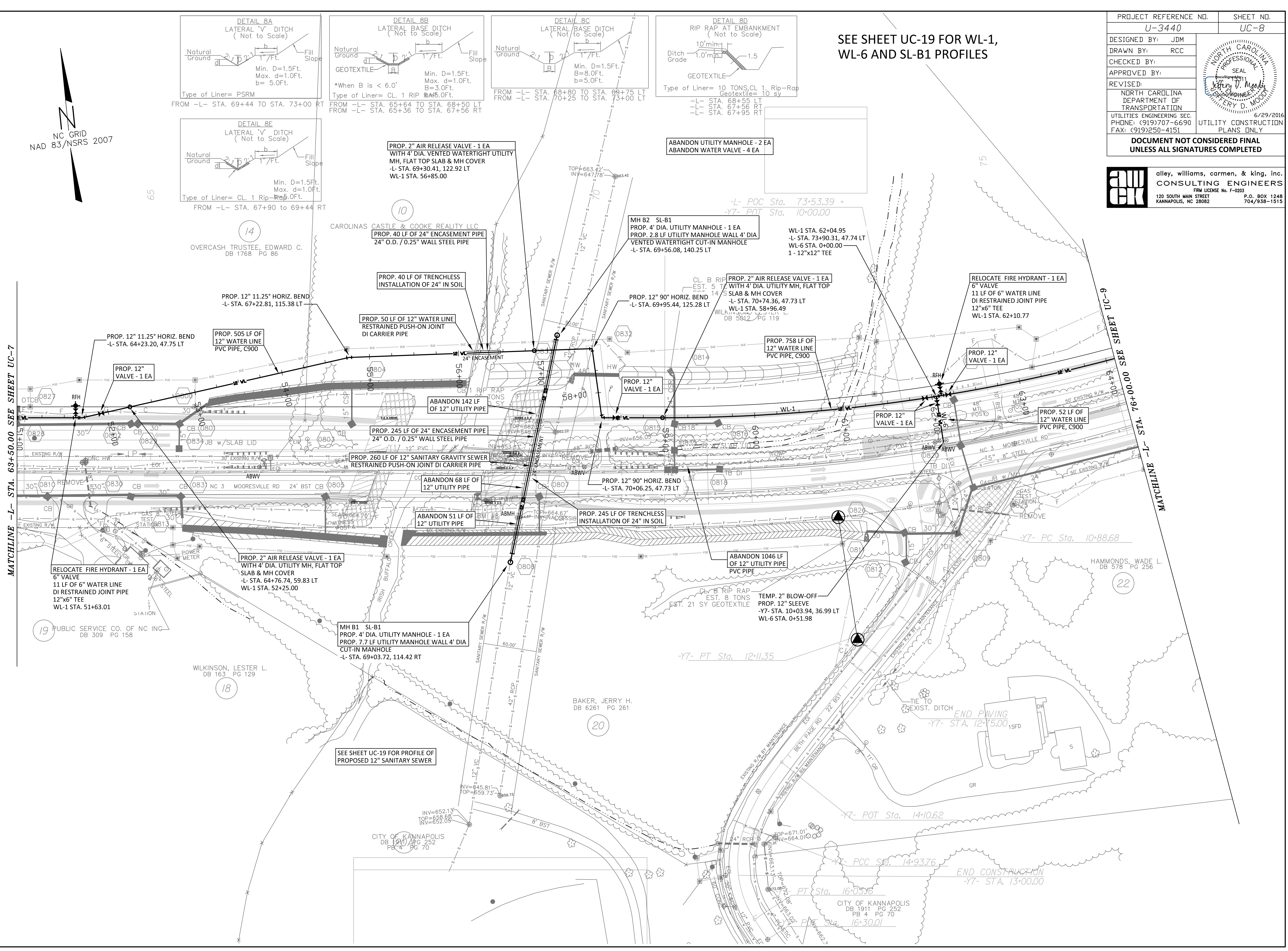
SEE SHEET UC-19 FOR WL-1, WL-6 AND SL-B1 PROFILES

PROJECT REFERENCE NO.	U-3440	SHEET NO.	UC-8
DESIGNED BY:	JDM		
DRAWN BY:	RCC		
CHECKED BY:			
APPROVED BY:			
REVISED:			
NORTH CAROLINA DEPARTMENT OF TRANSPORTATION		6/29/2016	
UTILITIES ENGINEERING SEC. PHONE: (919)707-6690 FAX: (919)250-4151		UTILITY CONSTRUCTION PLANS ONLY	
DOCUMENT NOT CONSIDERED FINAL UNLESS ALL SIGNATURES COMPLETED			

alley, williams, carmen, & king, inc.  
CONSULTING ENGINEERS  
FIRM LICENSE No. F-0203  
120 SOUTH MAIN STREET P.O. BOX 1248  
KANNAPOLIS, NC 28082 704/938-1515

MATCHLINE -L- STA. 63+50.00 SEE SHEET UC-7

MATCHLINE -L- STA. 76+00.00 SEE SHEET UC-9



SEE SHEET UC-19 FOR PROFILE OF PROPOSED 12" SANITARY SEWER

END PAVING -Y7- STA. 12+55.00

END CONSTRUCTION -Y7- STA. 13+00.00

19 PUBLIC SERVICE CO. OF NC INC. DB 309 PG 158

18 WILKINSON, LESTER L. DB 163 PG 129

17 CITY OF KANNAPOLIS DB 1210 PG 252

20 BAKER, JERRY H. DB 6261 PG 261

22 HAMMONDS, WADE L. DB 578 PG 256

NAD 83/NSRS 2007

14 OVERCASH TRUSTEE, EDWARD C. DB 1768 PG 86

10 CAROLINAS CASTLE & COOKE REALTY LLC

WL-1 STA. 62+04.95  
-L- STA. 73+90.31, 47.74 LT  
WL-6 STA. 0+00.00  
1 - 12"x12" TEE

PROP. 758 LF OF 12" WATER LINE PVC PIPE, C900

PROP. 12" VALVE - 1 EA

PROP. 52 LF OF 12" WATER LINE PVC PIPE, C900

MH B1 SL-B1  
PROP. 4" DIA. UTILITY MANHOLE - 1 EA  
PROP. 7.7' UTILITY MANHOLE WALL 4" DIA CUT-IN MANHOLE  
-L- STA. 69+03.72, 114.42 RT

PROP. 2" AIR RELEASE VALVE - 1 EA WITH 4" DIA. UTILITY MH, FLAT TOP SLAB & MH COVER  
-L- STA. 64+76.74, 59.83 LT  
WL-1 STA. 52+25.00

PROP. 12" 90° HORIZ. BEND -L- STA. 70+06.25, 47.73 LT

TEMP. 2" BLOW-OFF PROP. 12" SLEEVE  
-Y7- STA. 10+03.94, 36.99 LT  
WL-6 STA. 0+51.98

PROP. 12" AIR RELEASE VALVE - 1 EA WITH 4" DIA. UTILITY MH, FLAT TOP SLAB & MH COVER  
-L- STA. 70+74.36, 47.73 LT  
WL-1 STA. 58+96.49

RELOCATE FIRE HYDRANT - 1 EA  
6" VALVE  
11 LF OF 6" WATER LINE DI RESTRAINED JOINT PIPE  
12"x6" TEE  
WL-1 STA. 62+10.77

PROP. 40 LF OF TRENCHLESS INSTALLATION OF 24" IN SOIL

PROP. 50 LF OF 12" WATER LINE RESTRAINED PUSH-ON JOINT DI CARRIER PIPE

PROP. 260 LF OF 12" SANITARY GRAVITY SEWER RESTRAINED PUSH-ON JOINT DI CARRIER PIPE

ABANDON 51 LF OF 12" UTILITY PIPE

ABANDON 68 LF OF 12" UTILITY PIPE

PROP. 245 LF OF 24" ENCASEMENT PIPE 24" O.D. / 0.25" WALL STEEL PIPE

PROP. 40 LF OF 24" ENCASEMENT PIPE 24" O.D. / 0.25" WALL STEEL PIPE

PROP. 12" 11.25° HORIZ. BEND -L- STA. 67+22.81, 115.38 LT

PROP. 505 LF OF 12" WATER LINE PVC PIPE, C900

PROP. 12" 11.25° HORIZ. BEND -L- STA. 64+23.20, 47.75 LT

PROP. 12" VALVE - 1 EA

RELOCATE FIRE HYDRANT - 1 EA  
6" VALVE  
11 LF OF 6" WATER LINE DI RESTRAINED JOINT PIPE  
12"x6" TEE  
WL-1 STA. 51+63.01

PROP. 12" 11.25° HORIZ. BEND -L- STA. 64+23.20, 47.75 LT

PROP. 12" VALVE - 1 EA

PROP. 12" 11.25° HORIZ. BEND -L- STA. 67+22.81, 115.38 LT

PROP. 12" 11.25° HORIZ. BEND -L- STA. 67+22.81, 115.38 LT

PROP. 12" 11.25° HORIZ. BEND -L- STA. 67+22.81, 115.38 LT

PROP. 12" 11.25° HORIZ. BEND -L- STA. 67+22.81, 115.38 LT

PROP. 12" 11.25° HORIZ. BEND -L- STA. 67+22.81, 115.38 LT

PROP. 12" 11.25° HORIZ. BEND -L- STA. 67+22.81, 115.38 LT

PROP. 12" 11.25° HORIZ. BEND -L- STA. 67+22.81, 115.38 LT

PROP. 12" 11.25° HORIZ. BEND -L- STA. 67+22.81, 115.38 LT

PROP. 12" 11.25° HORIZ. BEND -L- STA. 67+22.81, 115.38 LT

PROP. 12" 11.25° HORIZ. BEND -L- STA. 67+22.81, 115.38 LT

PROP. 12" 11.25° HORIZ. BEND -L- STA. 67+22.81, 115.38 LT

PROP. 12" 11.25° HORIZ. BEND -L- STA. 67+22.81, 115.38 LT

PROP. 12" 11.25° HORIZ. BEND -L- STA. 67+22.81, 115.38 LT

PROP. 12" 11.25° HORIZ. BEND -L- STA. 67+22.81, 115.38 LT

PROP. 12" 11.25° HORIZ. BEND -L- STA. 67+22.81, 115.38 LT