

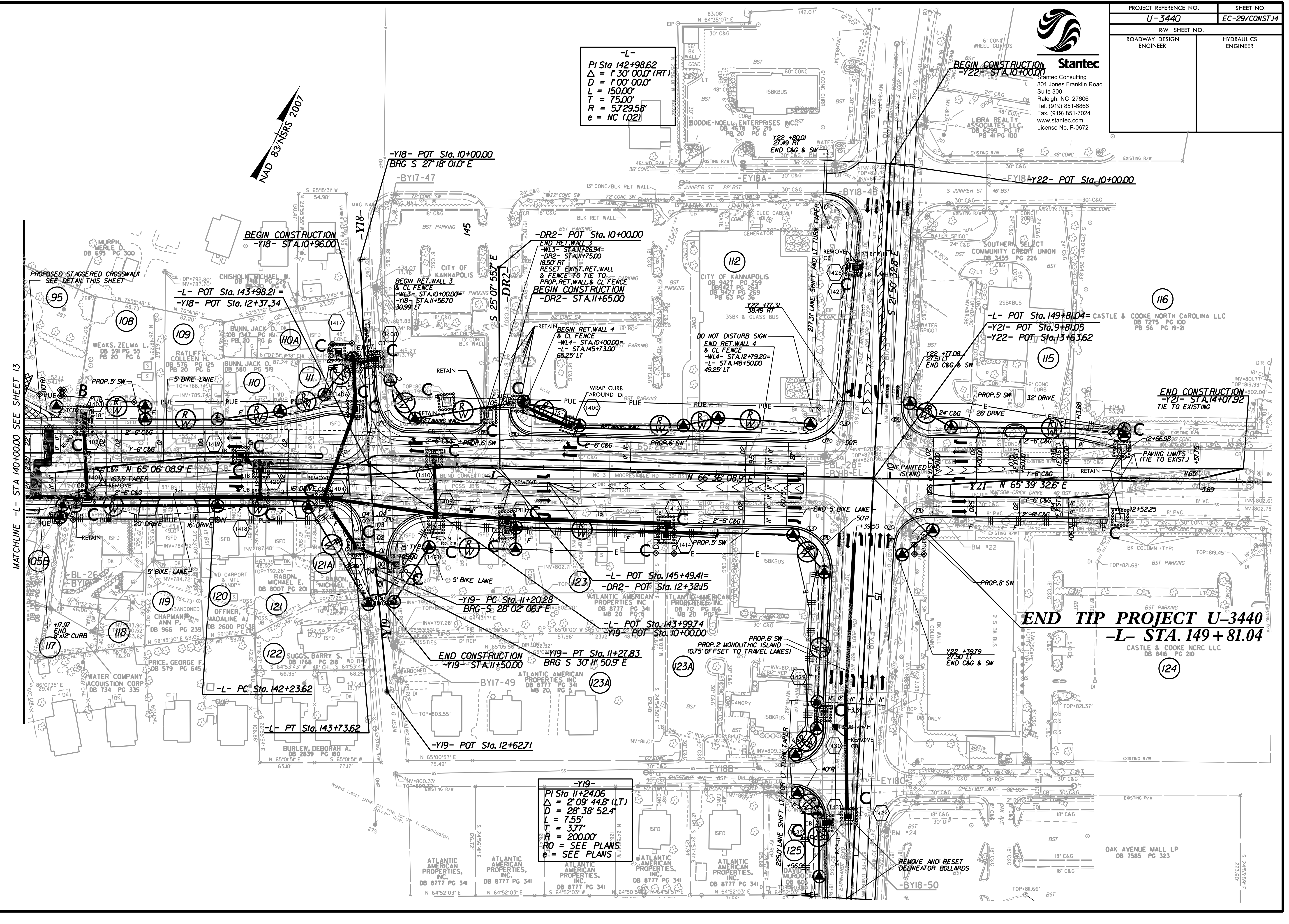


PROJECT REFERENCE NO.	SHEET NO.
U-3440	EC-29/CONST.14
R/W SHEET NO.	
ROADWAY DESIGN ENGINEER	HYDRAULICS ENGINEER

Stantec
 Stantec Consulting
 801 Jones Franklin Road
 Suite 300
 Raleigh, NC 27606
 Tel. (919) 851-6866
 Fax. (919) 851-7024
 www.stantec.com
 License No. F-0672

-L-
 PI Sta 142+98.62
 $\Delta = 1' 30'' 00.0''$ (RT)
 D = 1'00' 00.0"
 L = 150.00'
 T = 75.00'
 R = 5,729.58'
 e = NC (1.02)

-Y19-
 PI Sta 11+24.06
 $\Delta = 2' 09'' 44.8''$ (LT)
 D = 28' 38'' 52.4"
 L = 7.55'
 T = 3.77'
 R = 200.00'
 RO = SEE PLANS
 e = SEE PLANS



NAD 83 NSRS 2007

MATCHLINE -L- STA 140+00.00 SEE SHEET 13

END TIP PROJECT U-3440
-L- STA. 149 + 81.04
 CASTLE & COOKE NCR LLC
 DB 8416 PG 210

END CONSTRUCTION
 -Y21- STA.14+07.92
 TIE TO EXISTING

-L- POT Sta. 149+81.04 = CASTLE & COOKE NORTH CAROLINA LLC
 -Y21- POT Sta. 9+81.05
 -Y22- POT Sta. 13+63.62

-Y18- POT Sta. 10+00.00
 BRG S 27° 18' 01.0" E

-L- POT Sta. 143+98.21 =
 -Y18- POT Sta. 12+37.34

BEGIN CONSTRUCTION
 -Y18- STA.10+96.00

-DR2- POT Sta. 10+00.00
 END RET. WALL 3
 -WL3- STA.11+28.94=
 -DR2- STA.11+75.00
 18.50 RT
 RESET EXIST. RET. WALL
 & FENCE TO TIE TO
 PROP. RET. WALL & CL FENCE
BEGIN CONSTRUCTION
 -DR2- STA.11+65.00

BEGIN RET. WALL 4
 & CL FENCE
 -WL4- STA.10+00.00=
 -L- STA.145+73.00
 65.25' LT

-L- POT Sta. 145+49.41=
 -DR2- POT Sta. 12+32.15

-Y19- PC Sta. 11+20.28
 BRG S 28° 02' 06.1" E

-L- POT Sta. 143+99.74
 -Y19- POT Sta. 10+00.00

END CONSTRUCTION
 -Y19- PT Sta. 11+27.83
 BRG S 30° 11' 50.9" E

-L- PC Sta. 142+23.62

-L- PT Sta. 143+73.62

-Y19- POT Sta. 12+62.71

Y22 +39.79
 21.50' LT
 END C&G & SW

OAK AVENUE MALL LP
 DB 7585 PG 323

S 24°53'19" E
 223.60'