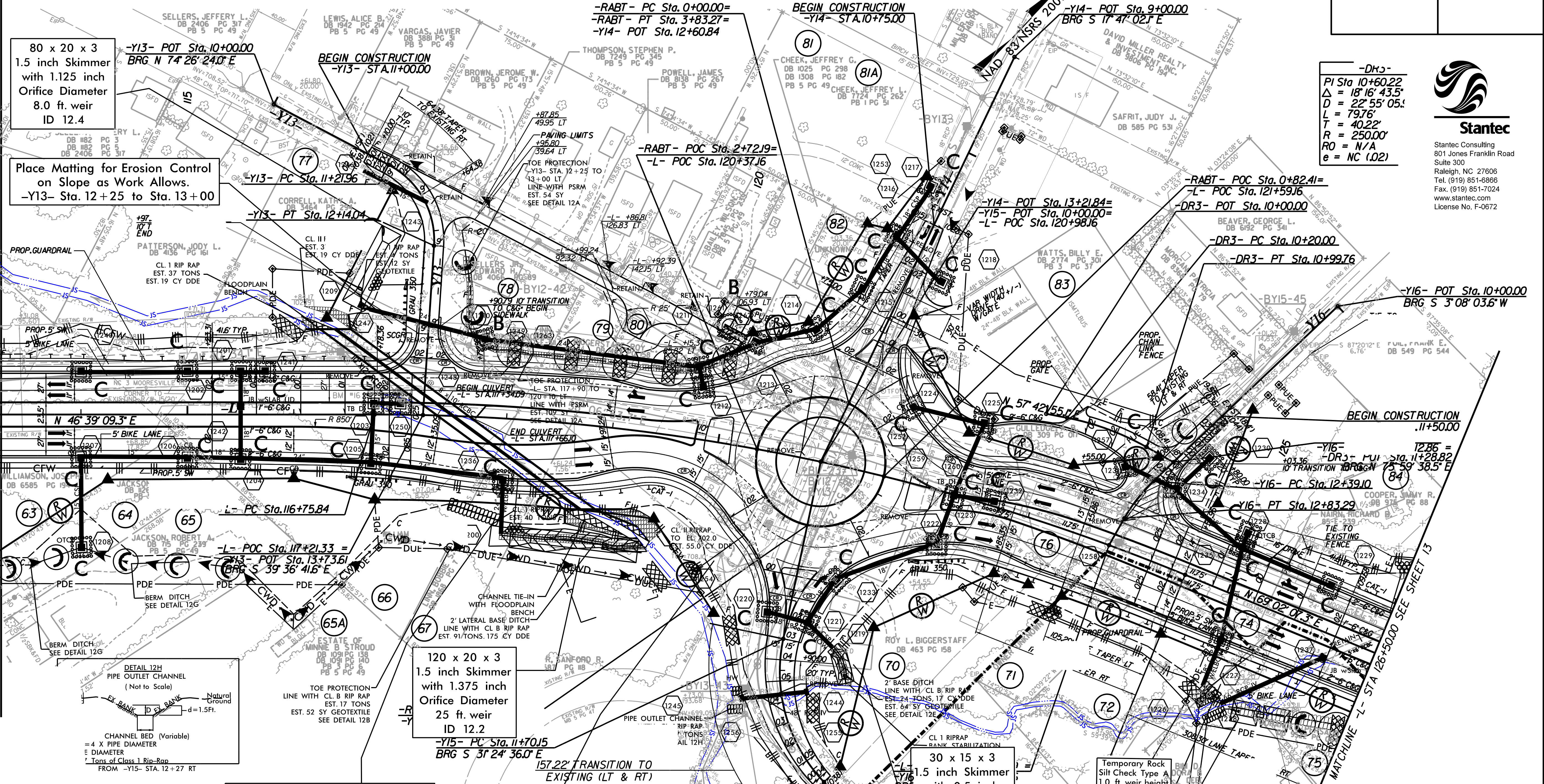
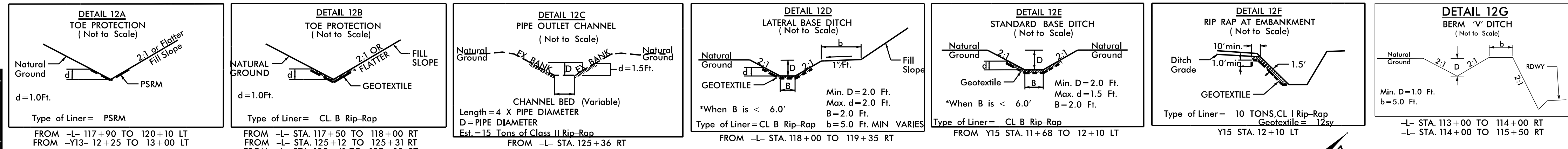


|                         |                     |
|-------------------------|---------------------|
| PROJECT REFERENCE NO.   | SHEET NO.           |
| U-3440                  | EC-27/CONST J2      |
| RW SHEET NO.            |                     |
| ROADWAY DESIGN ENGINEER | HYDRAULICS ENGINEER |

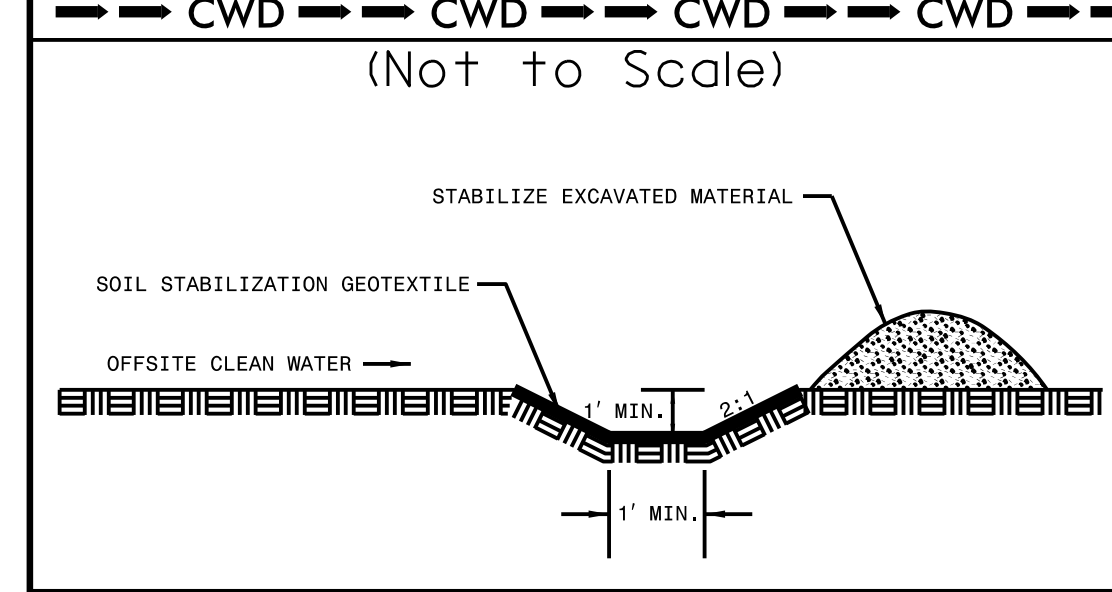


-DR3-  
 PI Sta 10+60.22  
 $\Delta = 18' 16" 43.5"$   
 $D = 22' 55" 05.1"$   
 $L = 7976'$   
 $T = 40.22'$   
 $R = 2500.00'$   
 $RO = N/A$   
 $e = NC (.02)$



**Stantec**  
 Stantec Consulting  
 801 Jones Franklin Road  
 Suite 300  
 Raleigh, NC 27606  
 Tel. (919) 851-6866  
 Fax. (919) 851-7024  
 www.stantec.com  
 License No. F-0672

### CLEAN WATER DIVERSION



Place Matting for Erosion Control on Slope as Work Allows.  
 -L- Sta. 117+50 to Sta. 119+50

Place Matting for Erosion Control on Slope as Work Allows.  
 -RDAB- Sta. 2+00 to Sta. 2+50

-L-  
 PI Sta 120+71.54  
 $\Delta = 22' 22" 58.0" (RT)$   
 $D = 2' 51" 53.2"$   
 $L = 781.31'$   
 $T = 395.70'$   
 $R = 2,000.00'$   
 $RO = 104'$   
 $e = .025$

-Y15- PT Sta. 13+15.73  
 END CONSTRUCTION  
 -Y15- POT Sta. 13+89.74  
 BRG S 87°00' 58.2" E

-Y15-  
 PI Sta 12+49.25  
 $\Delta = 55' 36" 22.2" (LT)$   
 $D = 38' 11" 49.9"$   
 $L = 145.58'$   
 $T = 79.10'$   
 $R = 150.00'$   
 $RO = SEE PLANS$   
 $e = SFF PLANS$

(69) Place Matting for Erosion Control on Slope as Work Allows.  
 -L- Sta. 123+50 to Sta. 126+75

25 x 20 x 3  
 1.5 inch Skimmer  
 with 0.75 inch  
 Orifice Diameter  
 4.0 ft. weir  
 (See Tiered Skimmer  
 Basin Detail)  
 ID 12.5