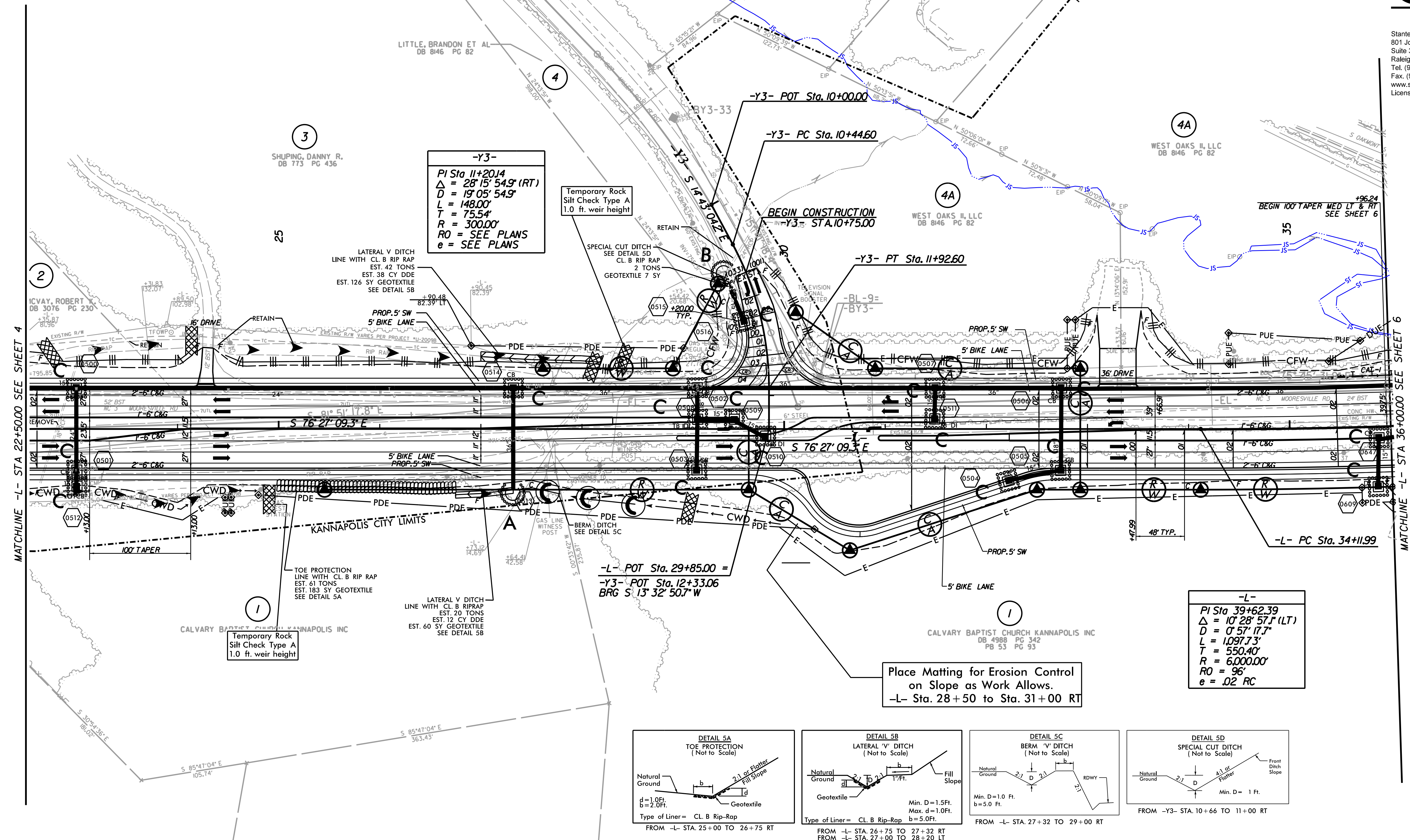


PROJECT REFERENCE NO.	SHEET NO.
U-3440	EC-20/CONST.5
RW SHEET NO.	
ROADWAY DESIGN ENGINEER	HYDRAULICS ENGINEER



**-Y3-**  
 PI Sta 11+2014  
 $\Delta = 28' 15'' 54.9''$  (RT)  
 $D = 19' 05'' 54.9''$   
 $L = 148.00'$   
 $T = 75.54'$   
 $R = 300.00'$   
 $RO = \text{SEE PLANS}$   
 $e = \text{SEE PLANS}$

**-L-**  
 PI Sta 39+62.39  
 $\Delta = 10' 28'' 57.1''$  (LT)  
 $D = 0' 57'' 17.7''$   
 $L = 1,097.73'$   
 $T = 550.40'$   
 $R = 6,000.00'$   
 $RO = 96'$   
 $e = .02$  RC

Place Matting for Erosion Control  
 on Slope as Work Allows.  
 -L- Sta. 28+50 to Sta. 31+00 RT

