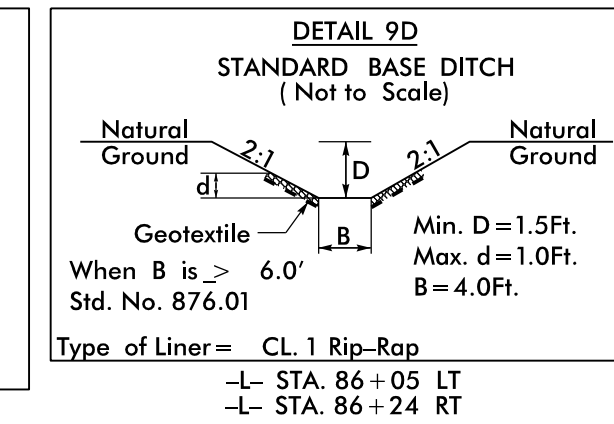
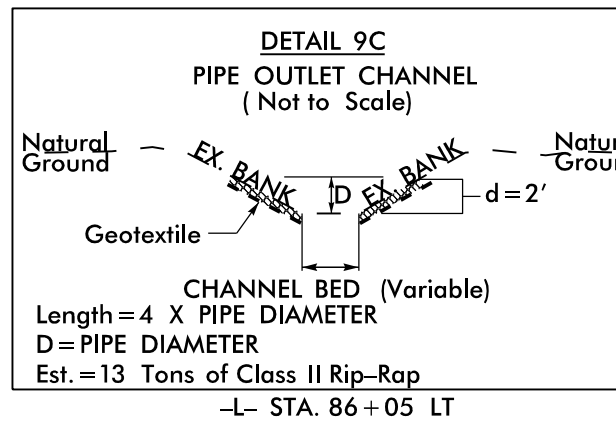
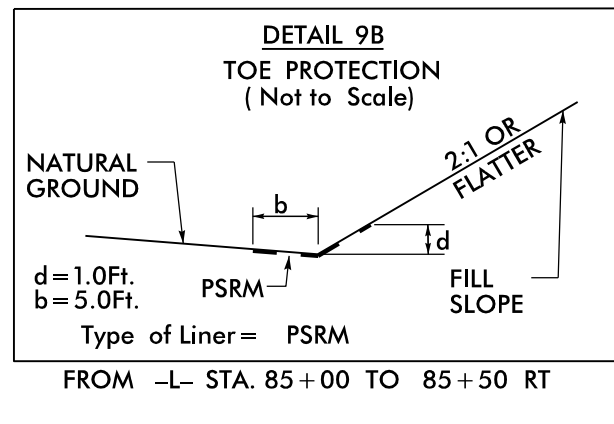
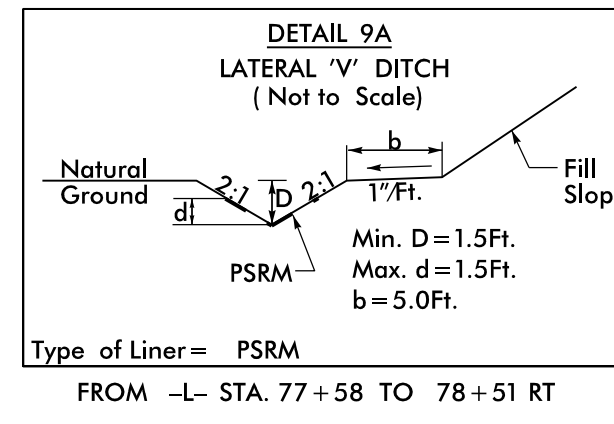
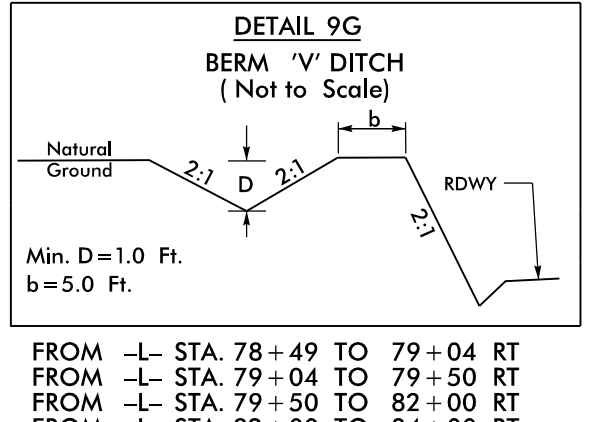
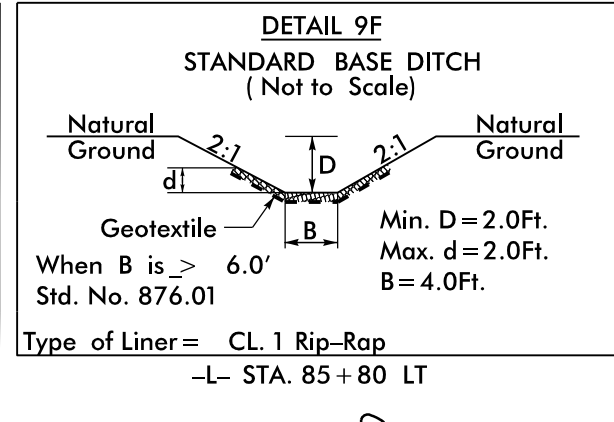
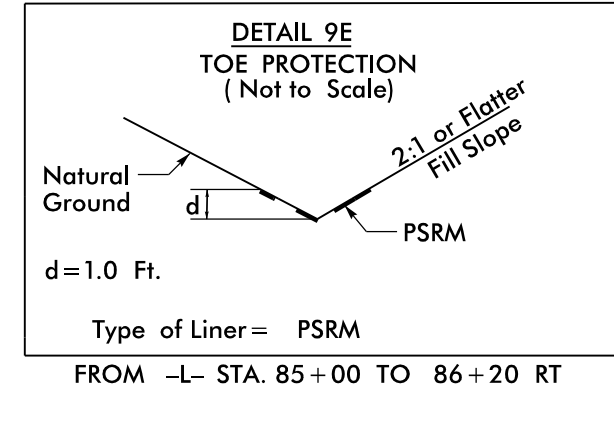


PROJECT REFERENCE NO. U-3440		SHEET NO. 9	
RW SHEET NO.		HYDRAULICS ENGINEER	
ROADWAY DESIGN ENGINEER		ENGINEER	
10/4/2016		10/5/2016	
DOCUMENT NOT CONSIDERED FINAL UNLESS ALL SIGNATURES COMPLETED			



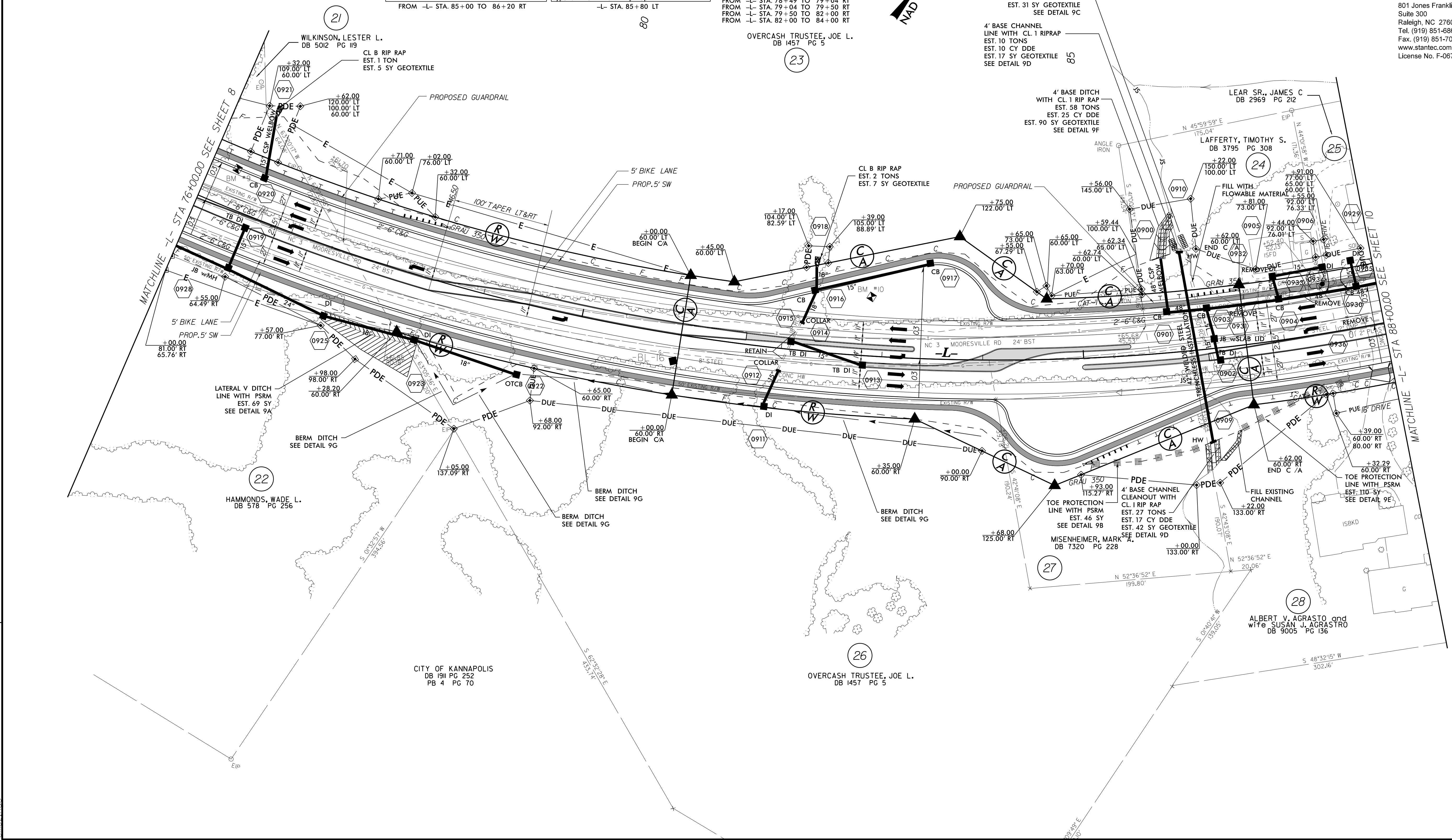
-L-  
PI Sta 80+28.76  
 $\Delta = 50' 54' 39.2'' (LT)$   
 $D = 2' 5' 53.2''$   
 $L = 1,777.13'$   
 $T = 952.04'$   
 $R = 2,000.00'$   
 $RO = 144'$   
 $e = .03$



NOTE: SEE SHEET 17 FOR -L- PROFILE  
SEE SHEET 2B-2 FOR -L- BULBOUT DETAIL

NAD 83 NSRS 2007

REVISIONS



10/4/2016  
U:\Roadway\Proj\U-3440\_rdy\_psh9.dgn  
mhz

**Stantec**

Stantec Consulting Services Inc.  
801 Jones Franklin Road  
Suite 300  
Raleigh, NC 27606  
Tel. (919) 851-8866  
Fax. (919) 851-7024  
www.stantec.com  
License No. F-0672