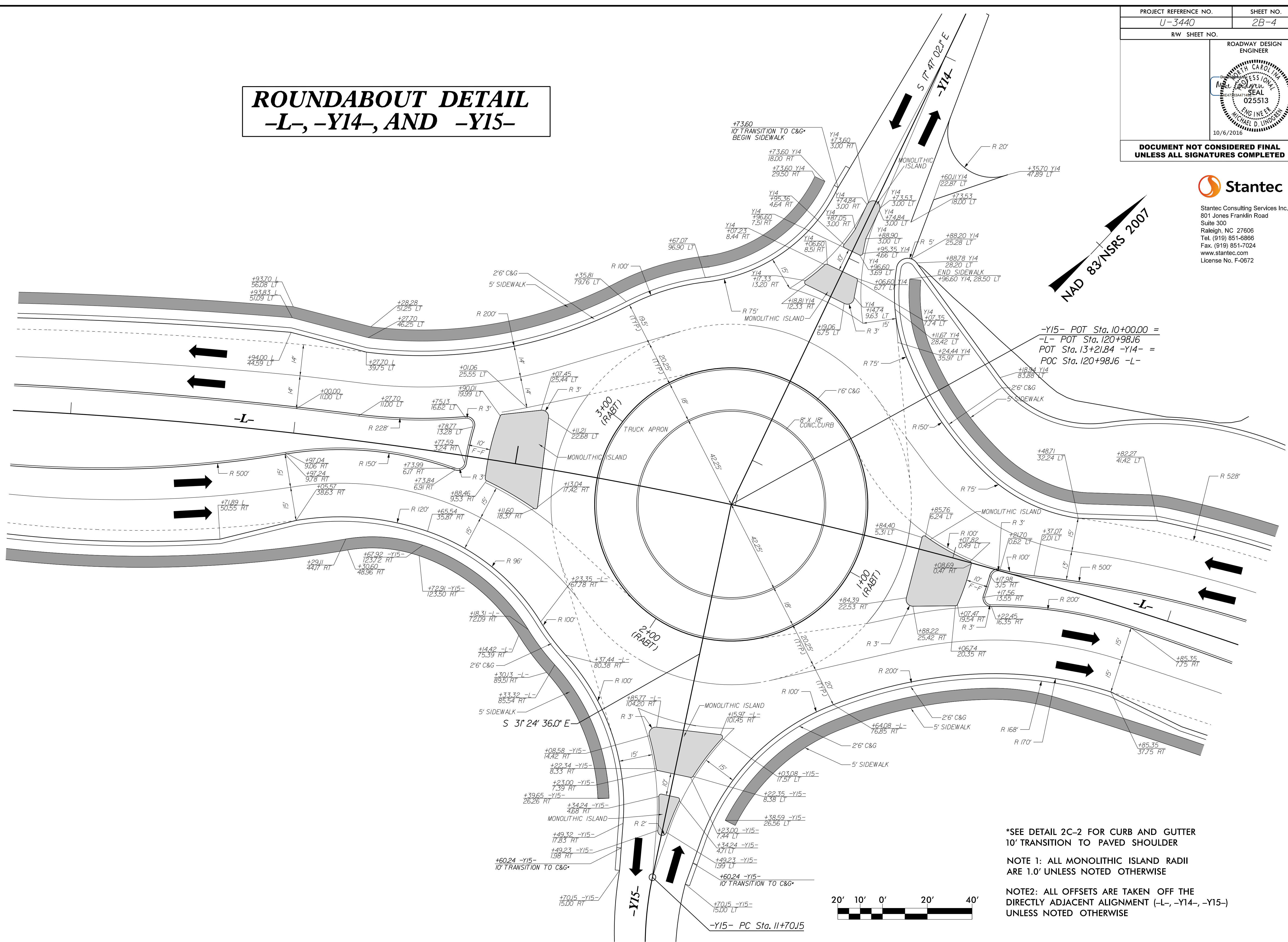


ROUNDABOUT DETAIL -L-, -Y14-, AND -Y15-

PROJECT REFERENCE NO. U-3440	SHEET NO. 2B-4
RW SHEET NO.	
ROADWAY DESIGN ENGINEER	
DOCUMENT NOT CONSIDERED FINAL UNLESS ALL SIGNATURES COMPLETED	

Stantec Consulting Services Inc.
801 Jones Franklin Road
Suite 300
Raleigh, NC 27606
Tel. (919) 851-6866
Fax. (919) 851-7024
www.stantec.com
License No. F-0672



NAD 83/NSRS 2007

-Y15- POT Sta. 10+00.00 =
-L- POT Sta. 120+98J6
POT Sta. 13+21.84 -Y14- =
POC Sta. 120+98J6 -L-

*SEE DETAIL 2C-2 FOR CURB AND GUTTER
10' TRANSITION TO PAVED SHOULDER

NOTE 1: ALL MONOLITHIC ISLAND RADII
ARE 1.0' UNLESS NOTED OTHERWISE

NOTE 2: ALL OFFSETS ARE TAKEN OFF THE
DIRECTLY ADJACENT ALIGNMENT (-L-, -Y14-, -Y15-)
UNLESS NOTED OTHERWISE

