

SURVEY CONTROL SHEET

BM1 ELEVATION - 820.90 N 637472 E 1501839 Y STATION 10+49.564 RIGHT RR SPIKE IN BASE OF 30' OAK	JAS55 ELEVATION - 713.02 N 636812 E 1505154 L STATION 40+21.7 LEFT 55 JAS
BM2 ELEVATION - 830.41 N 637380 E 1502919 L STATION 17+13.66 LEFT RR SPIKE IN BASE OF POWER POLE	BM5 ELEVATION - 712.62 N 636727 E 1505415 L STATION 42+89.49 RIGHT RR SPIKE IN BASE OF 24' TREE
BM3 ELEVATION - 768.85 N 637165 E 1503953 L STATION 27+68.100 LEFT RR SPIKE IN BASE OF 18' PINE	BM6 ELEVATION - 723.62 N 636669 E 1506273 L STATION 51+47.56 RIGHT RR SPIKE IN BASE OF TEL POLE
	BM25 ELEVATION - 751.30 N 638457 E 1505437 Y5 STATION 10+00 N 07°11'54.2" W DIST 1455.17 RR SPIKE IN 15' OAK

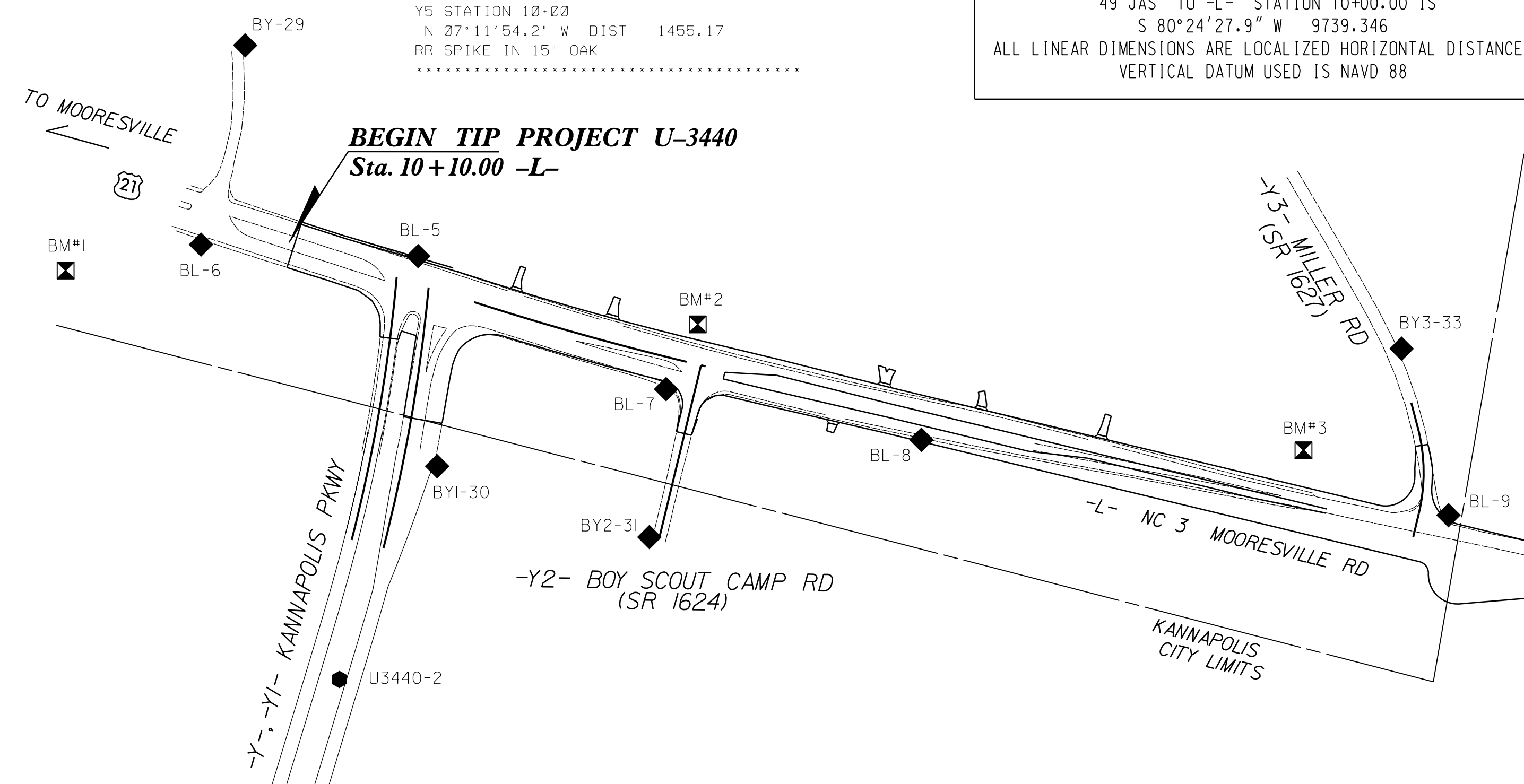
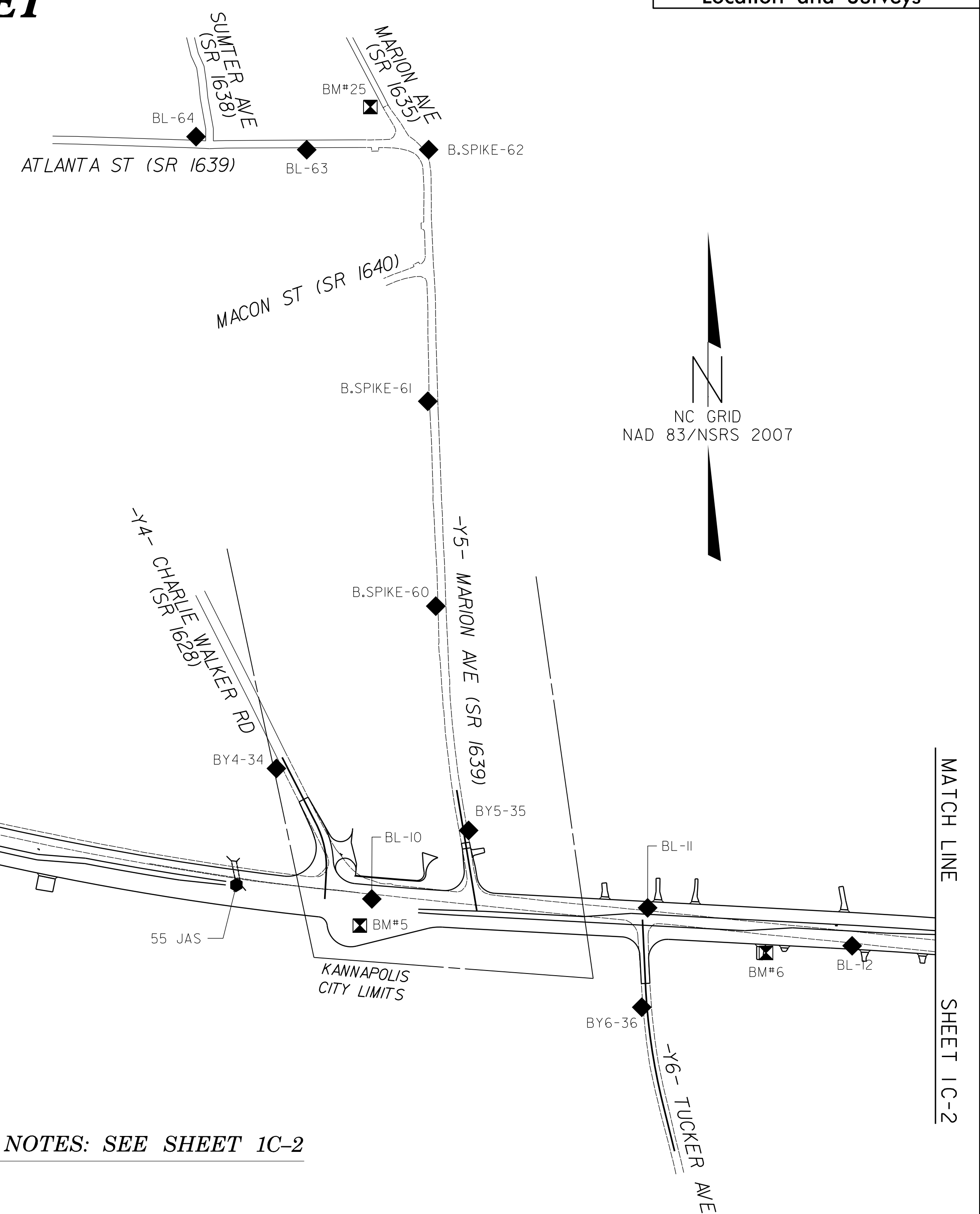
DATUM DESCRIPTION

THE LOCALIZED COORDINATE SYSTEM DEVELOPED FOR THIS PROJECT IS BASED ON THE STATE PLANE COORDINATES ESTABLISHED BY NCDOT FOR MONUMENT "49 JAS" WITH NAD 83/NSRS 2007 STATE PLANE GRID COORDINATES OF NORTHING: 639143.117(±) EASTING: 1511823.969(±) ELEVATION: 703.19(±)

THE AVERAGE COMBINED GRID FACTOR USED ON THIS PROJECT (GROUND TO GRID) IS: 0.9998490

THE N.C. LAMBERT GRID BEARING AND LOCALIZED HORIZONTAL GROUND DISTANCE FROM "49 JAS" TO -L- STATION 10+00.00 IS
S 80°24'27.9" W 9739.346

ALL LINEAR DIMENSIONS ARE LOCALIZED HORIZONTAL DISTANCES
VERTICAL DATUM USED IS NAVD 88



BY POINT	DESC.	NORTH	EAST	ELEVATION	L STATION	OFFSET
29	BY-29	637856.7610	1502145.9140	820.33	OUTSIDE PROJECT LIMITS	
E06	BL-6	637516.4630	1502070.3650	818.84	OUTSIDE PROJECT LIMITS	
BY1 POINT	DESC.	NORTH	EAST	ELEVATION	Y1 STATION	OFFSET
E05	BL-5	637496.7280	1502441.1870	823.93	OUTSIDE PROJECT LIMITS	
30	BY1-30	637137.9720	1502473.5560	823.78	12+97.24	58.26 LT
2	U3440-2	636773.8700	1502307.0250	816.64	OUTSIDE PROJECT LIMITS	
1	U3440-1	635258.0140	1501847.8020	797.49	OUTSIDE PROJECT LIMITS	
BY2 POINT	DESC.	NORTH	EAST	ELEVATION	Y2 STATION	OFFSET
E07	BL-7	637269.5560	1502864.5220	825.10	10+53.70	48.47 RT
31	BY2-31	637016.8170	1502836.0820	819.23	13+06.06	16.80 RT
BY3 POINT	DESC.	NORTH	EAST	ELEVATION	Y3 STATION	OFFSET
33	BY3-33	637338.5980	1504120.3140	753.65	OUTSIDE PROJECT LIMITS	
E09	BL-9	637054.4130	1504200.1330	758.30	11+84.39	49.81 LT
BY4 POINT	DESC.	NORTH	EAST	ELEVATION	Y4 STATION	OFFSET
34	BY4-34	637058.3640	1505238.4550	718.63	10+15.49	21.70 RT
E010	BL-10	636782.6820	1505440.1260	717.05	13+14.88	99.11 LT

NOTES: SEE SHEET 1C-2

BY5 POINT	DESC.	NORTH	EAST	ELEVATION	Y5 STATION	OFFSET
64	BL-64	638393.6500	1505068.6140	767.46	OUTSIDE PROJECT LIMITS	
63	BL-63	638366.0070	1505302.5670	760.45	OUTSIDE PROJECT LIMITS	
62	B.SPIKE-62	638366.2670	1505560.2270	746.85	OUTSIDE PROJECT LIMITS	
61	B.SPIKE-61	637834.4670	1505558.4440	775.40	OUTSIDE PROJECT LIMITS	
60	B.SPIKE-60	637401.5680	1505575.3100	751.46	OUTSIDE PROJECT LIMITS	
35	BY5-35	636927.4730	1505644.6760	732.30	10+88.30	10.73 LT
E0U10	BL-10	636782.6820	1505440.1260	717.05	11+97.40	214.88 RT
BY6 POINT	DESC.	NORTH	EAST	ELEVATION	Y6 STATION	OFFSET
E011	BL-11	636763.8530	1506023.0010	729.78	OUTSIDE PROJECT LIMITS	
36	BY6-36	636553.7280	1506010.5810	726.29	11+84.68	11.11 RT

NOTE: DRAWING NOT TO SCALE

5/21/14
U:\Projects\U3440\U3440-1C-1.dgn
11/2/2016 10:54:06 AM
L:\Projects\U3440\U3440-1C-1.dgn
L:\Projects\U3440\U3440-1C-1.dgn