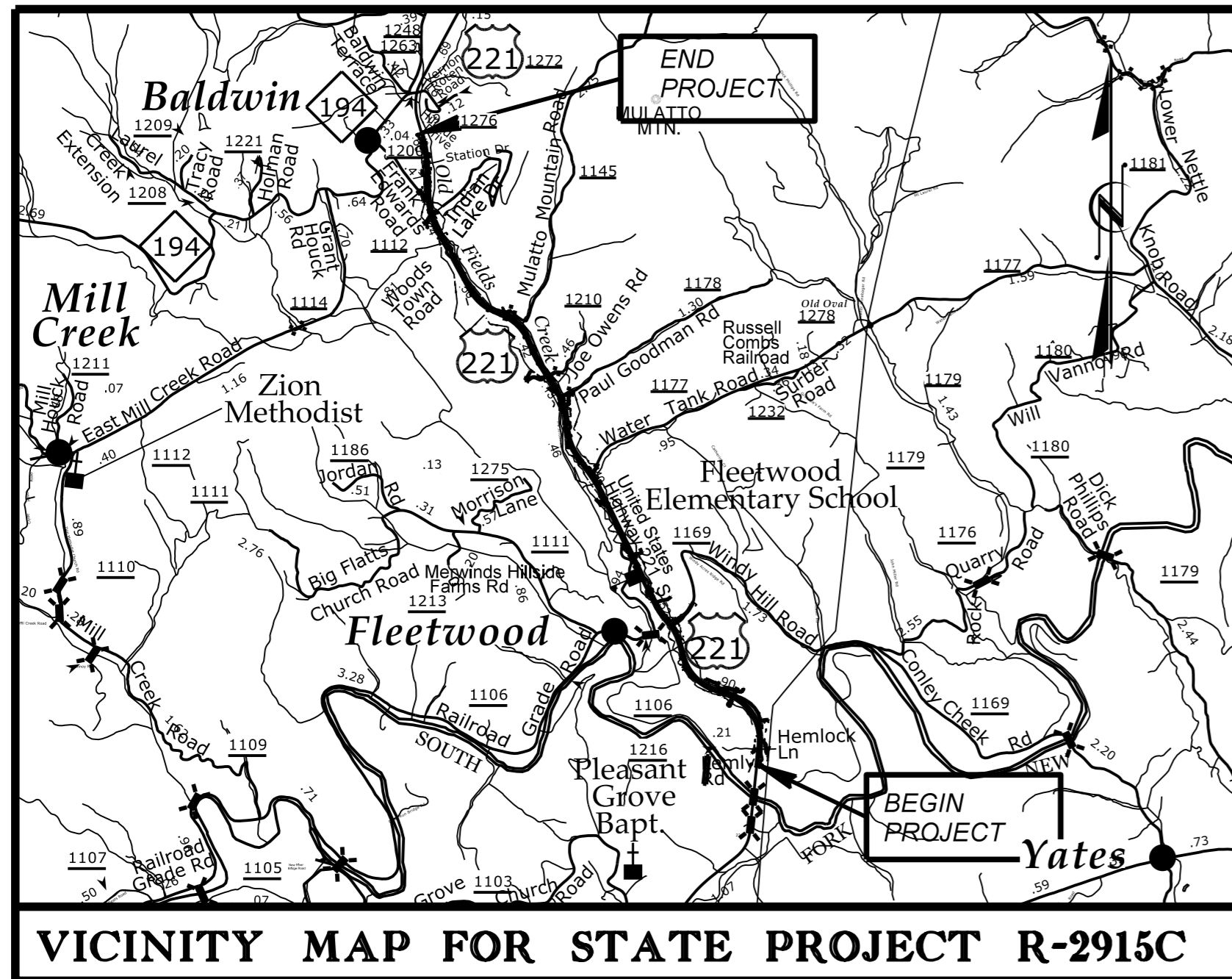


TIP PROJECT: R-2915C

CONTRACT: C203801

STATE	STATE PROJECT REFERENCE NO.	SHEET NO.	TOTAL SHEETS
N.C.	R-2915C		
STATE PROJ. NO.	F.A. PROJ. NO.	DESCRIPTION	
34518.1.4	STP-0221(41)	P.E.	
34518.2.FR3	STP-0221(41)	R/W	
34518.2.FR3	STP-0221(41)	UTILITIES	
34518.3.FR3	STP-0221(41)	CONSTR.	

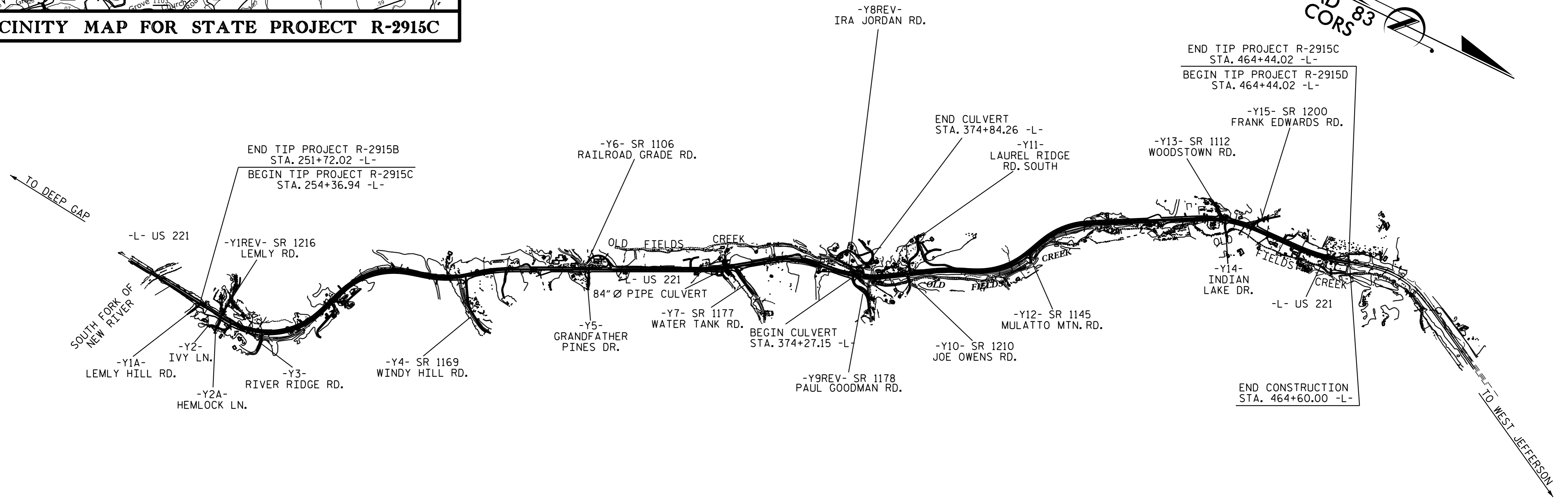


VICINITY MAP FOR STATE PROJECT R-2915C

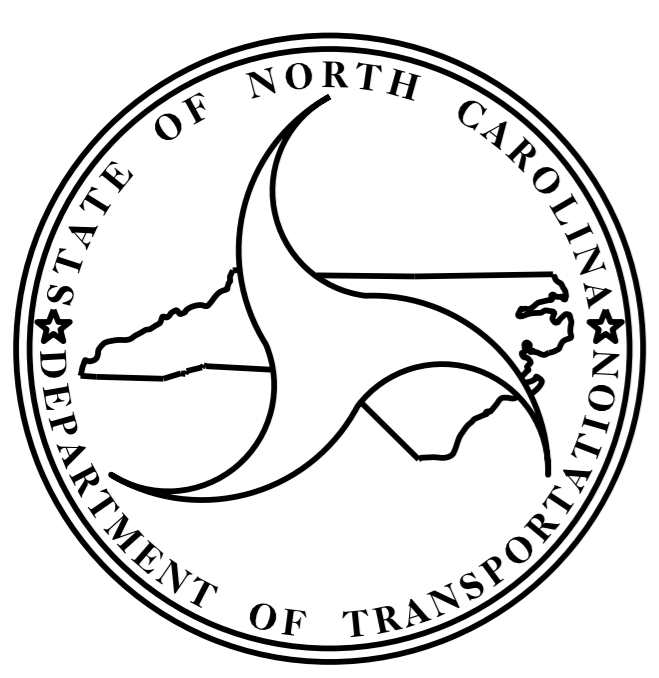
STATE OF NORTH CAROLINA  
DIVISION OF HIGHWAYS  
**ASHE COUNTY**

**LOCATION: US 221 FROM NORTH OF SOUTH FORK NEW RIVER  
TO SOUTH OF NC 194.**

**TYPE OF WORK: GRADING, DRAINAGE, PAVING, CULVERT,  
AND RETAINING WALLS**



**STRUCTURES**



**DESIGN DATA**

ADT 2016 =	12,743
ADT 2036 =	21,029
K =	9 %
D =	60 %
T =	9 % *
V =	60 MPH**
* = (TTST 2% + DUAL 7%)	
FUNC CLASS =	RURAL ARTERIAL
	STATEWIDE TIER

**PROJECT LENGTH**

LENGTH ROADWAY TIP PROJECT R-2915C =	3.969 MILES
LENGTH STRUCTURE TIP PROJECT R-2915C =	0.010 MILES
<b>TOTAL LENGTH TIP PROJECT R-2915C =</b>	<b>3.979 MILES</b>

Prepared in the Office of:  
**DIVISION OF HIGHWAYS**  
STRUCTURES MANAGEMENT UNIT  
1000 BIRCH RIDGE DR.  
RALEIGH, N.C. 27610

2012 STANDARD SPECIFICATIONS

LETTING DATE :

November 15, 2016

\_\_\_\_\_  
D. R. Calhoun, P.E.  
PROJECT ENGINEER

\_\_\_\_\_  
W. S. Arafat, P.E.  
PROJECT DESIGN ENGINEER