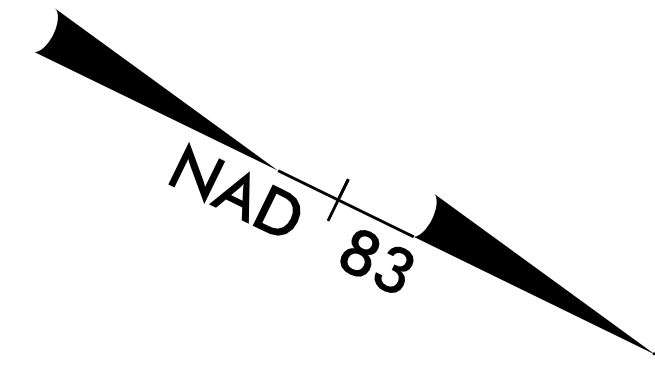


UTILITIES BY OTHERS

NOTE:
ALL PROPOSED UTILITY WORK
SHOWN ON THIS SHEET WILL
BE DONE BY OTHERS

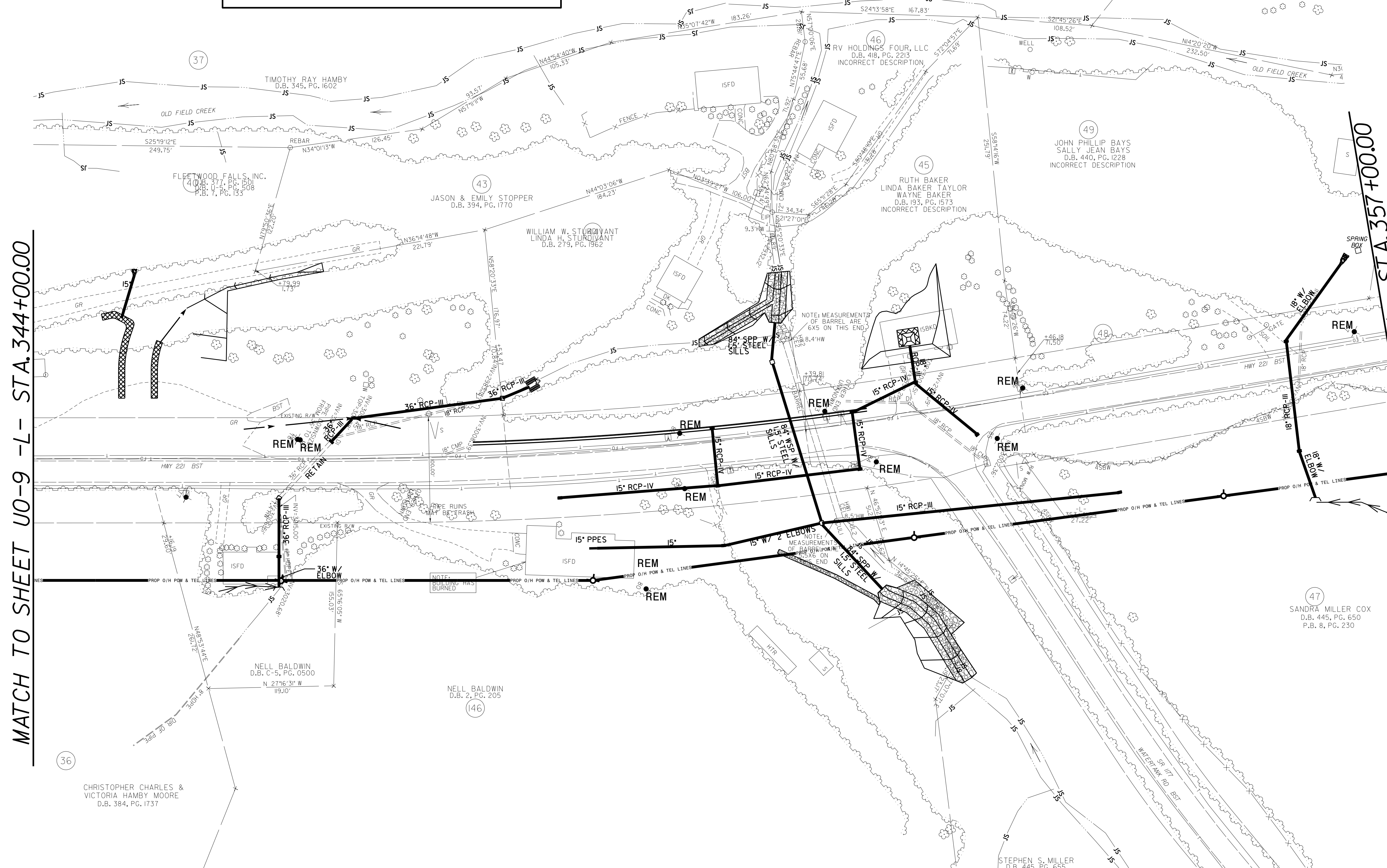
Existing buried phone lines
will be abandoned and
attached BREMC poles



MATCH TO SHEET UO-9 -L- STA. 344+00.00

MATCH TO SHEET UO-11 -L- STA. 357+00.00

5/14/99
082\F-2915\CAD\Drawings\Redy\Ut\Proj\NR2915C_ut_edj12_UO10.psh.dgn
T:\2016\082\F-2915\CAD\Drawings\Redy\Ut\Proj\NR2915C_ut_edj12_UO10.psh.dgn



36
CHRISTOPHER CHARLES &
VICTORIA HAMBY MOORE
D.B. 384, PG. 1737

NELL BALDWIN
D.B. C-5, PG. 0500
N. 27'16"31" W
119.10'

NELL BALDWIN
D.B. 2, PG. 205

JASON & EMILY STOPPER
D.B. 394, PG. 1770

WILLIAM W. STURDIVANT
LINDA H. STURDIVANT
D.B. 275, PG. 1562

45
RUTH BAKER
LINDA BAKER TAYLOR
WAYNE BAKER
D.B. 193, PG. 1573
INCORRECT DESCRIPTION

49
JOHN PHILLIP BAYS
SALLY JEAN BAYS
D.B. 440, PG. 1228
INCORRECT DESCRIPTION

47
SANDRA MILLER COX
D.B. 445, PG. 650
P.B. 8, PG. 230

STEPHEN S. MILLER
D.B. 445, PG. 655
P.B. 8, PG. 230