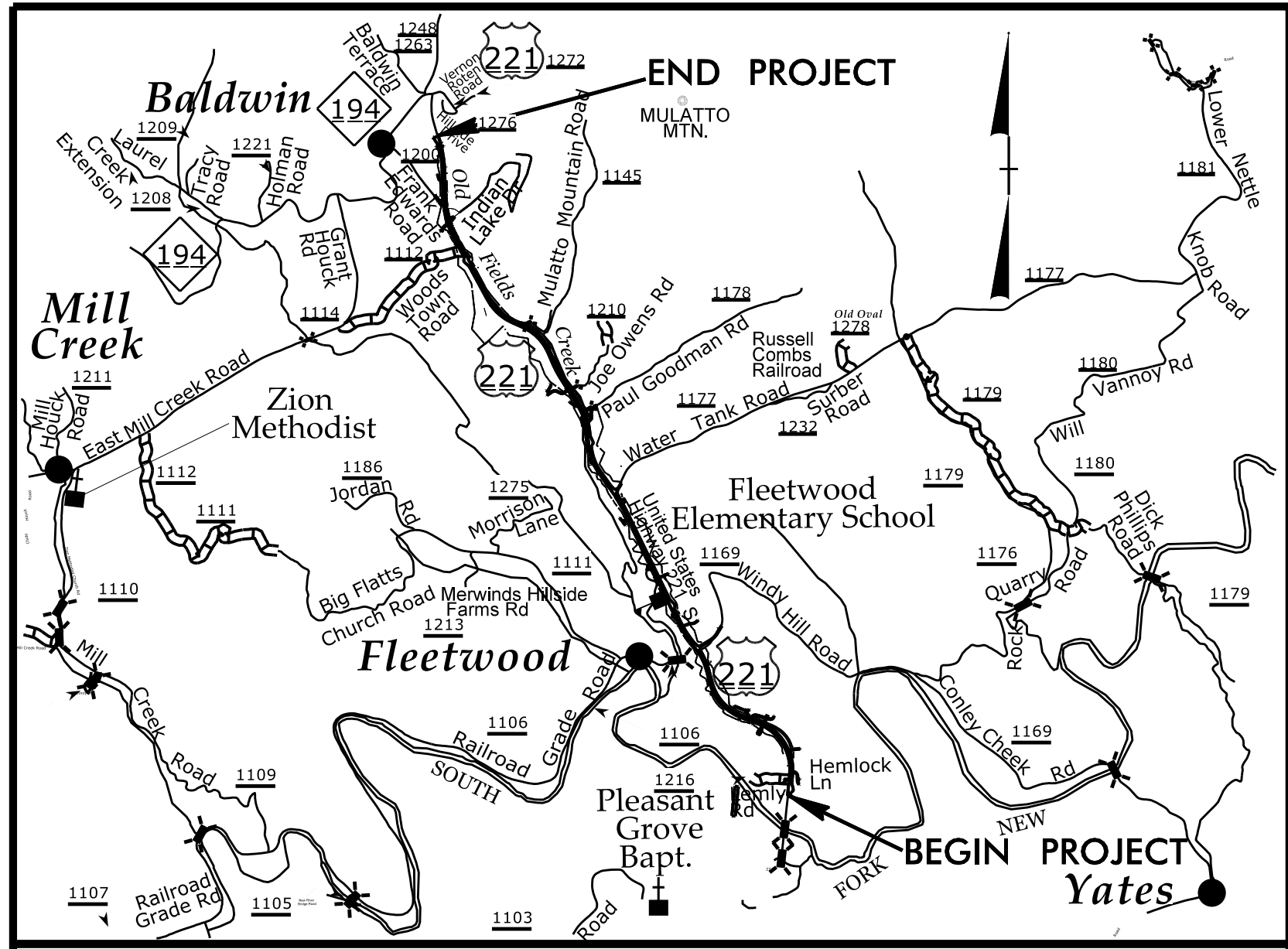


TIP PROJECT: R-2915C



VICINITY MAP FOR STATE PROJECT R-2915C

STATE OF NORTH CAROLINA
DIVISION OF HIGHWAYS

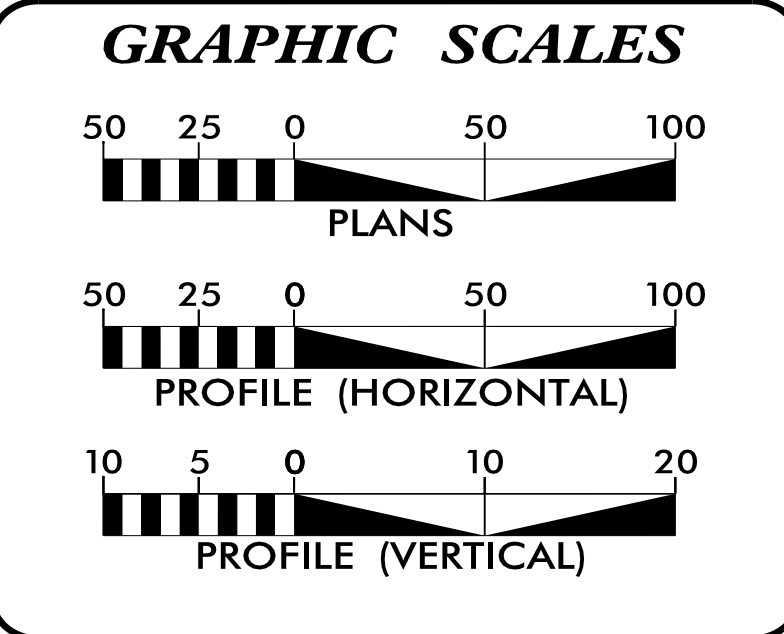
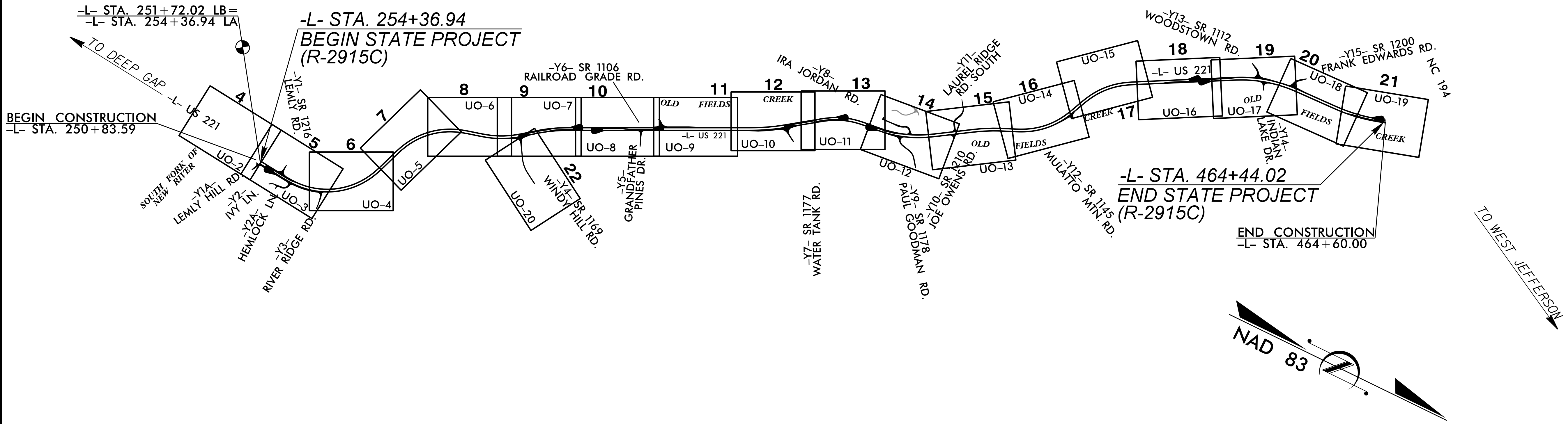
**UTILITIES BY OTHERS PLANS
ASHE COUNTY**

LOCATION: US 221 FROM NORTH OF SOUTH FORK NEW RIVER TO SOUTH OF NC 194.

TYPE OF WORK: POWER AND TELECOMMUNICATION BY OTHERS RELOCATION

T.I.P. NO.	SHEET NO.
R-2915C	UO-1

NOTE:
ALL UTILITY WORK SHOWN ON THIS SHEET IS DONE BY OTHERS. NO PAYMENT WILL BE MADE TO THE CONTRACTOR FOR UTILITY WORK SHOWN ON THIS SHEET.



INDEX OF SHEETS

SHEET NO.:	DESCRIPTION:
UO-1	TITLE SHEET
UO-02 THRU UO-20	UBO PLAN SHEETS

UTILITY OWNERS WITH CONFLICTS

(A) POWER - Blue Ridge EMC
(B) TELEPHONE - Skyline
(C) CATV - Ashe County Cable

PREPARED IN THE OFFICE OF:

M A Engineering Consultants, Inc.
598 East Chatham Street Suite 137 Cary, NC 27511
Phone: 919.297.0220 Fax: 919.297.0221

NC License: F-0160

WEBB WHITE PROJECT UTILITY COORDINATOR

DIVISION OF HIGHWAYS UTILITIES UNIT
1555 MAIL SERVICES CENTER
RALEIGH NC 27699-1555
PHONE (919) 707-6690
FAX (919) 250-4151

CARL BARCLAY, PE UTILITIES REGIONAL ENGINEER
JAMES SWINSON UTILITIES ENGINEER
AMY DUPREE UTILITIES AREA COORDINATOR
GREG SEALY UTILITIES COORDINATOR

7/22/2016 1:50:57 PM F:\JUBS\0659\082\R-2915C\Utilities\U01\Proj\R2915C_ut_1_tsh_u01_psh.dgn