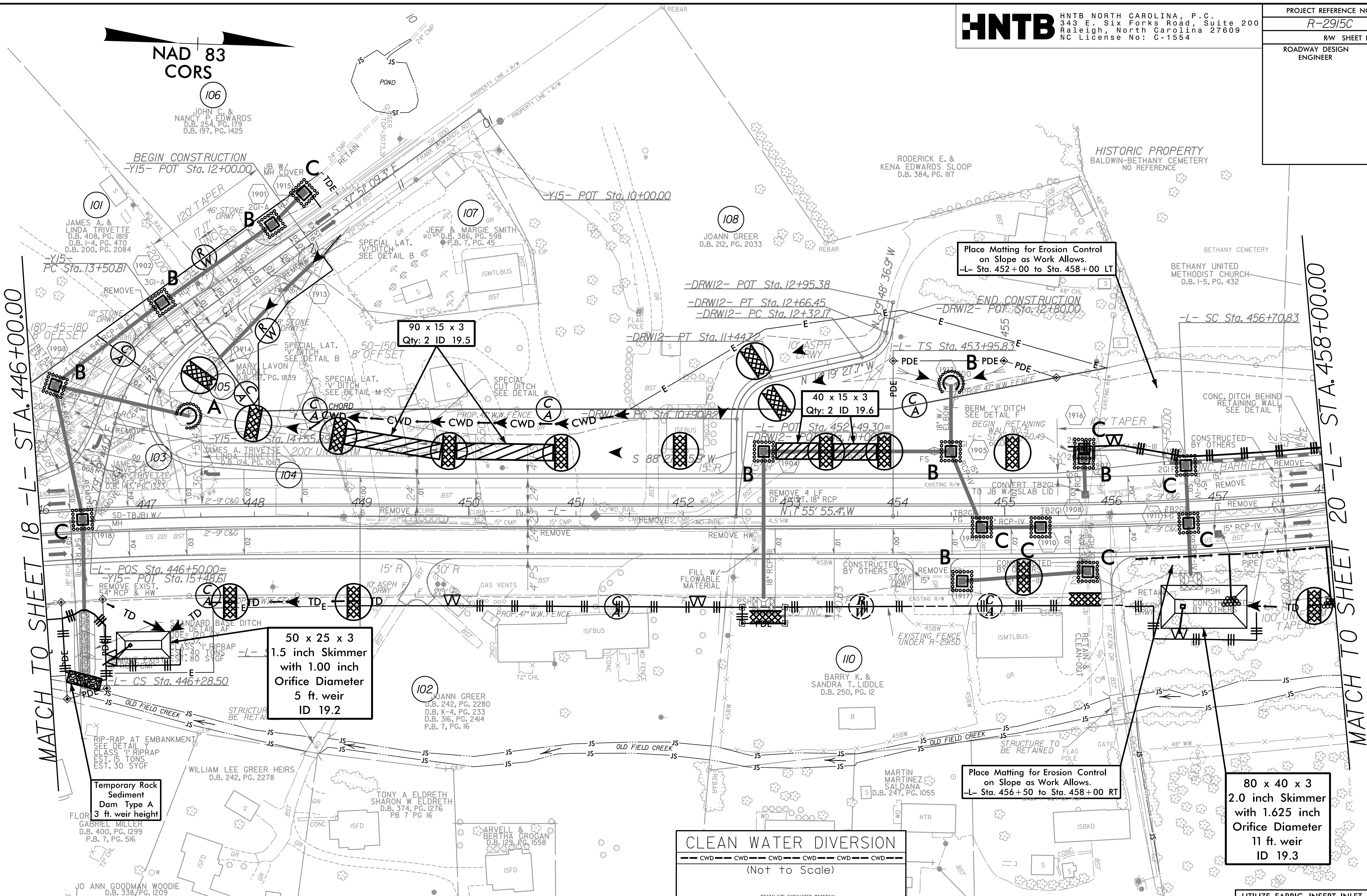


PROJECT REFERENCE NO.	SHEET NO.
R-2915C	EC-39/CONST.19
RW SHEET NO.	
ROADWAY DESIGN ENGINEER	HYDRAULICS ENGINEER

NAD 83
 CORS



MATCH TO SHEET 18 -L- STA. 446+00.00

MATCH TO SHEET 20 -L- STA. 458+00.00

UTILIZE FABRIC INSERT INLET PROTECTION DEVICE IN LIEU OF ROCK INLET SEDIMENT TRAP TYPE 'C' TO AVOID IMPOUNDING RUNOFF ON ROADWAY OPEN TO PUBLIC AND AS DIRECTED.

INSTALL MATTING FOR EROSION CONTROL IN PROPOSED DITCH LINES. (SEE MATTING SUMMARY)

REVISIONS

12:57:00 PM R-2915C.ec_PSH19.dgn