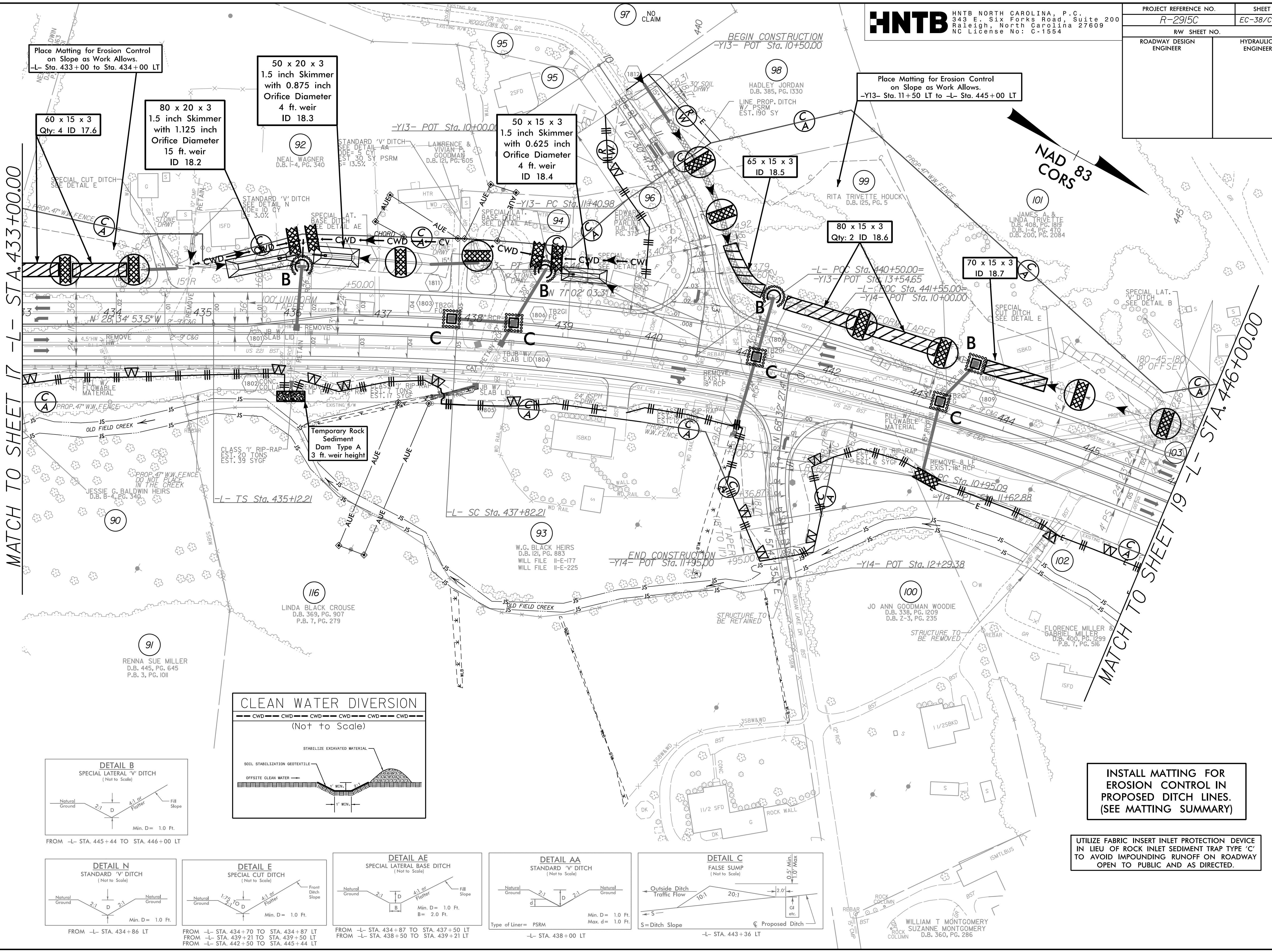


8/17/99

PROJECT REFERENCE NO.	SHEET NO.
R-2915C	EC-38/CONST.18
RW SHEET NO.	
ROADWAY DESIGN ENGINEER	HYDRAULICS ENGINEER

MATCH TO SHEET 17 -L- STA. 433+00.00

MATCH TO SHEET 19 -L- STA. 446+00.00



REVISIONS

Place Matting for Erosion Control on Slope as Work Allows.
 -L- Sta. 433+00 to Sta. 434+00 LT

60 x 15 x 3
 Qty: 4 ID 17.6

80 x 20 x 3
 1.5 inch Skimmer with 1.125 inch Orifice Diameter
 15 ft. weir
 ID 18.2

50 x 20 x 3
 1.5 inch Skimmer with 0.875 inch Orifice Diameter
 4 ft. weir
 ID 18.3

50 x 15 x 3
 1.5 inch Skimmer with 0.625 inch Orifice Diameter
 4 ft. weir
 ID 18.4

65 x 15 x 3
 ID 18.5

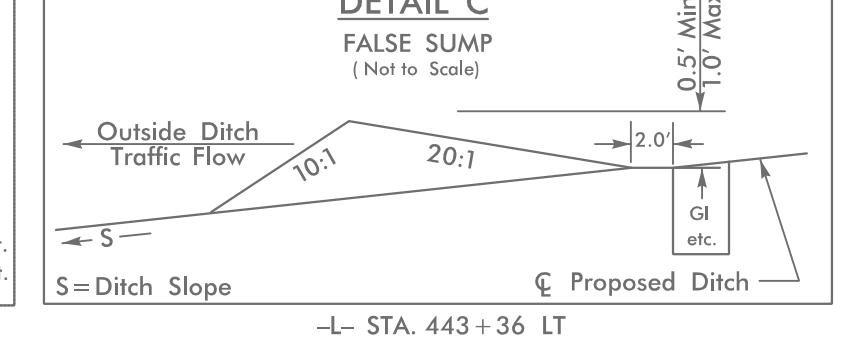
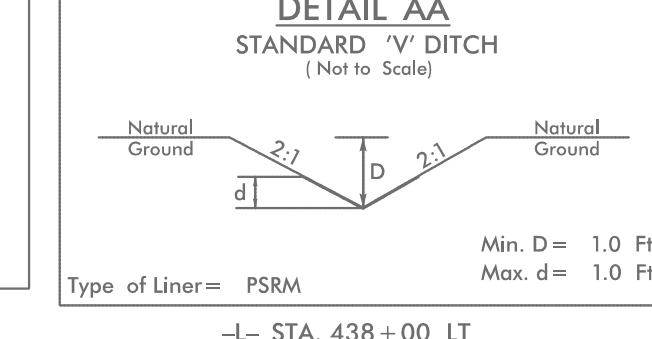
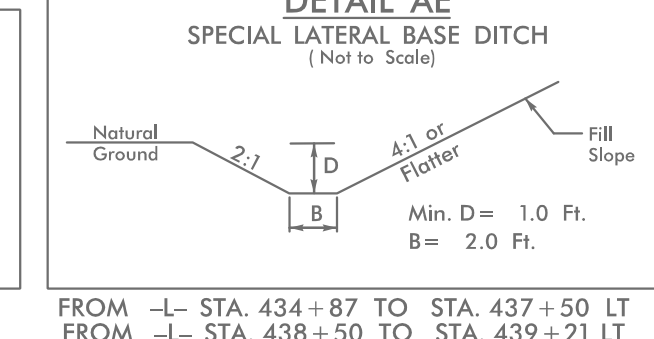
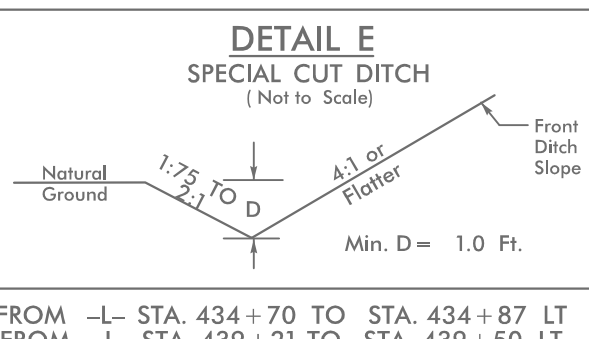
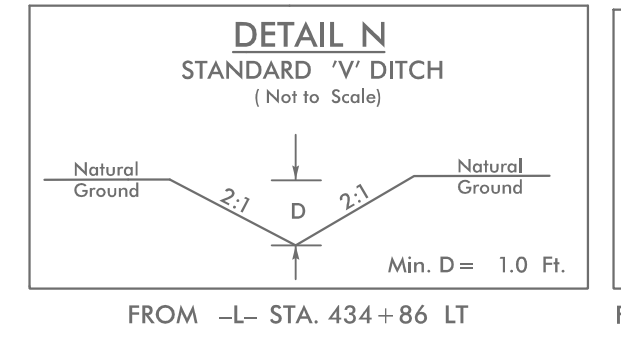
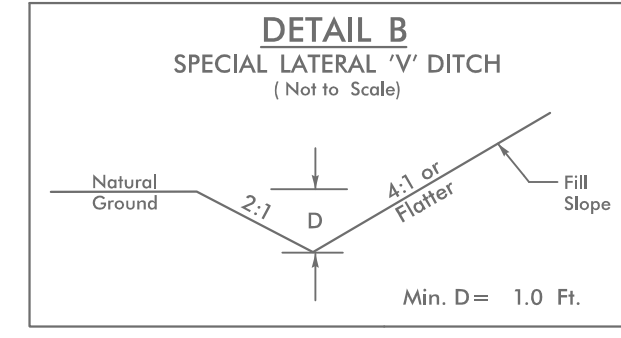
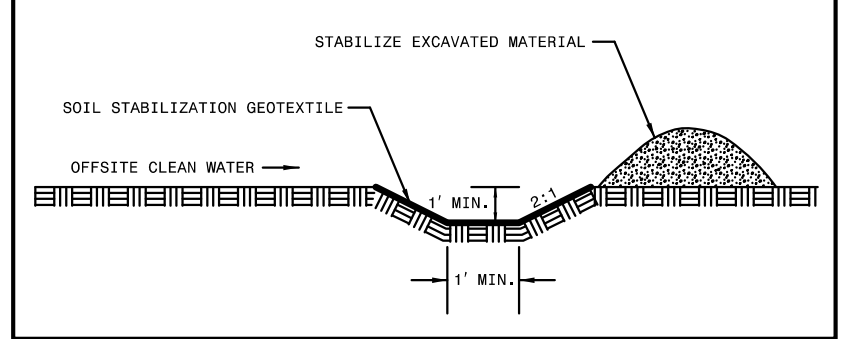
Place Matting for Erosion Control on Slope as Work Allows.
 -Y13- Sta. 11+50 LT to -L- Sta. 445+00 LT

80 x 15 x 3
 Qty: 2 ID 18.6

70 x 15 x 3
 ID 18.7

Temporary Rock Sediment Dam Type A
 3 ft. weir height

CLEAN WATER DIVERSION
 (Not to Scale)



INSTALL MATTING FOR EROSION CONTROL IN PROPOSED DITCH LINES. (SEE MATTING SUMMARY)

UTILIZE FABRIC INSERT INLET PROTECTION DEVICE IN LIEU OF ROCK INLET SEDIMENT TRAP TYPE 'C' TO AVOID IMPOUNDING RUNOFF ON ROADWAY OPEN TO PUBLIC AND AS DIRECTED.

12:55:05 PM
 R-2915C.ec_PSH18.dgn
 \$\$\$\$\$\$