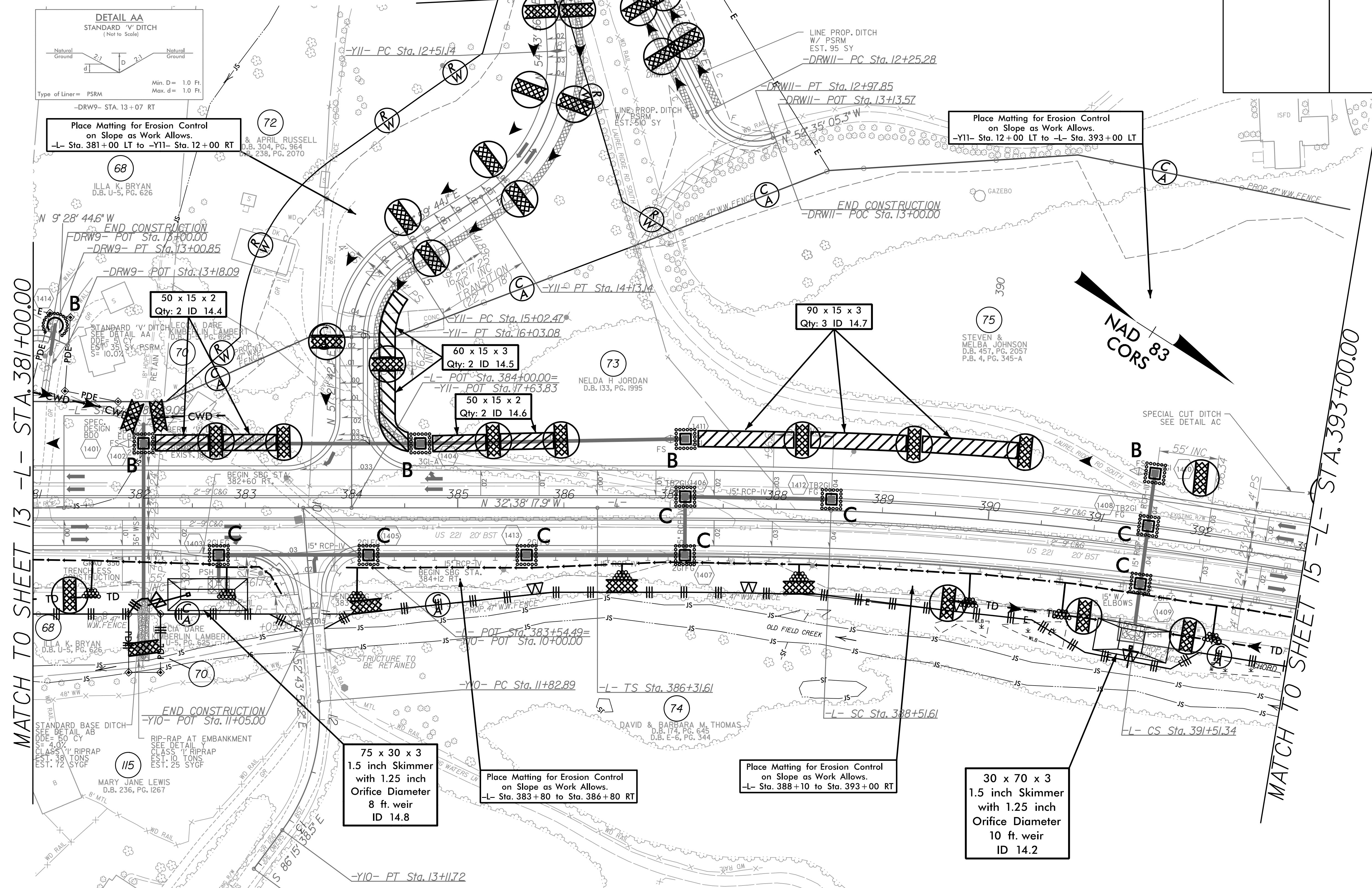


8/17/99

PROJECT REFERENCE NO. <i>R-2915C</i>	SHEET NO. <i>EC-34/CONST.14</i>
RW SHEET NO.	
ROADWAY DESIGN ENGINEER	HYDRAULICS ENGINEER

MATCH TO SHEET 22
 -YII- STA. 12+00.00



Place Matting for Erosion Control on Slope as Work Allows.
 -L- Sta. 381+00 LT to -YII- Sta. 12+00 RT

Place Matting for Erosion Control on Slope as Work Allows.
 -YII- Sta. 12+00 LT to -L- Sta. 393+00 LT

50 x 15 x 2
 Qty: 2 ID 14.4

60 x 15 x 3
 Qty: 2 ID 14.5

50 x 15 x 2
 Qty: 2 ID 14.6

90 x 15 x 3
 Qty: 3 ID 14.7

75 x 30 x 3
 1.5 inch Skimmer with 1.25 inch Orifice Diameter 8 ft. weir ID 14.8

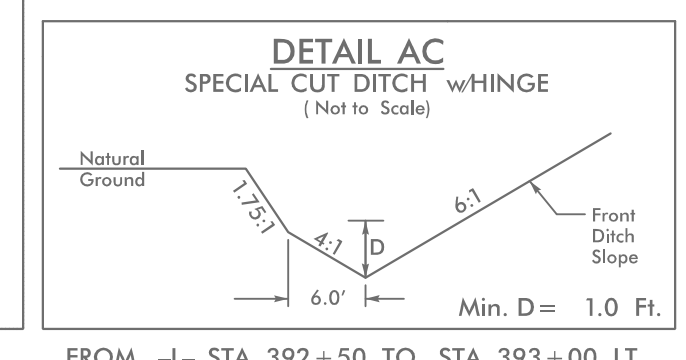
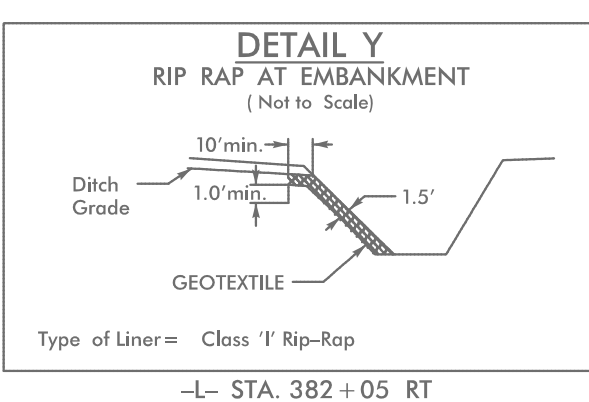
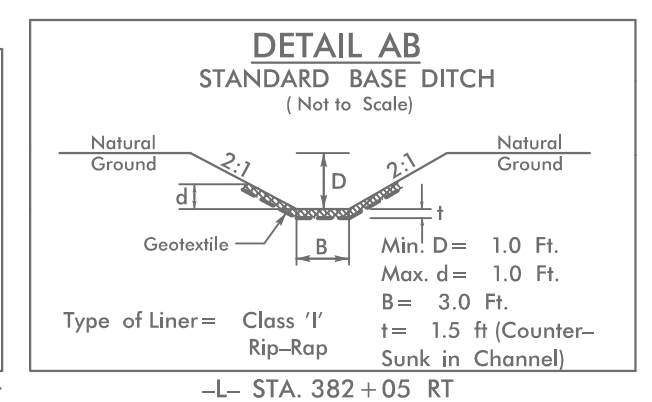
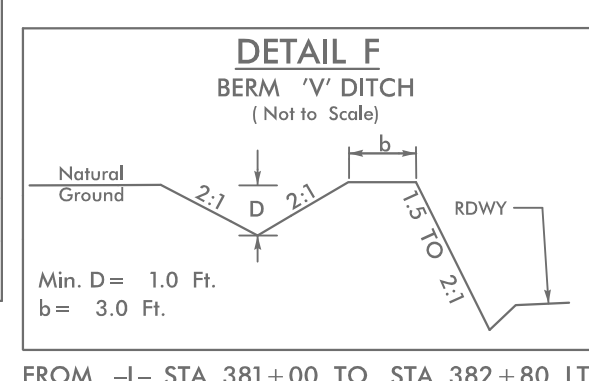
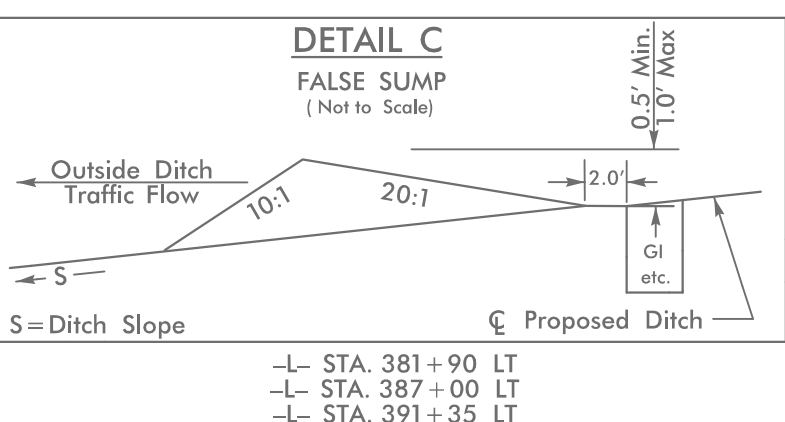
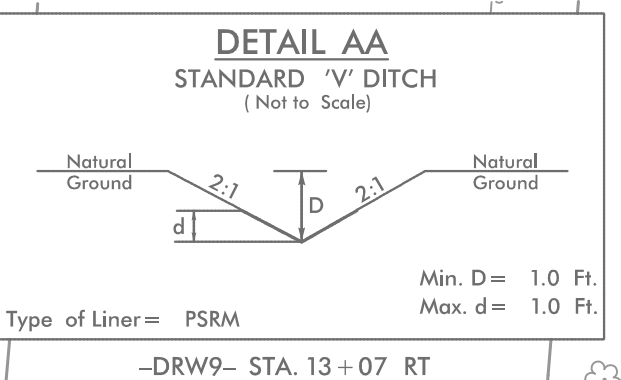
Place Matting for Erosion Control on Slope as Work Allows.
 -L- Sta. 383+80 to Sta. 386+80 RT

Place Matting for Erosion Control on Slope as Work Allows.
 -L- Sta. 388+10 to Sta. 393+00 RT

30 x 70 x 3
 1.5 inch Skimmer with 1.25 inch Orifice Diameter 10 ft. weir ID 14.2

UTILIZE FABRIC INSERT INLET PROTECTION DEVICE IN LIEU OF ROCK INLET SEDIMENT TRAP TYPE 'C' TO AVOID IMPOUNDING RUNOFF ON ROADWAY OPEN TO PUBLIC AND AS DIRECTED.

INSTALL MATTING FOR EROSION CONTROL IN PROPOSED DITCH LINES. (SEE MATTING SUMMARY)



REVISIONS

12/5/2019 PM
 12:51:29 PM
 R-2915C.ec_PSH14.dgn
 12/5/2019 12:51:29 PM

MATCH TO SHEET 13 -L- STA. 381+00.00

MATCH TO SHEET 15 -L- STA. 393+00.00

NAD COR 83