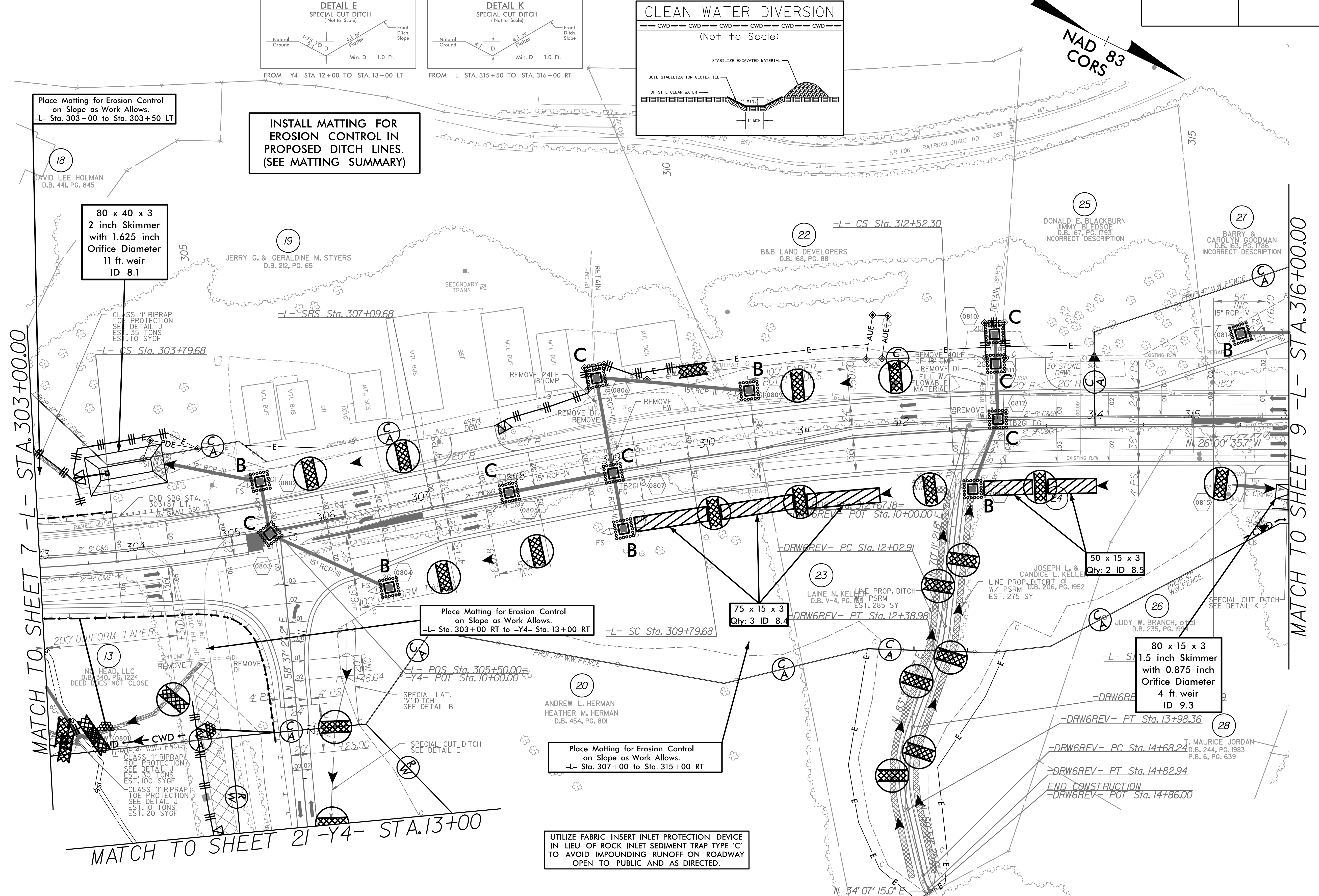
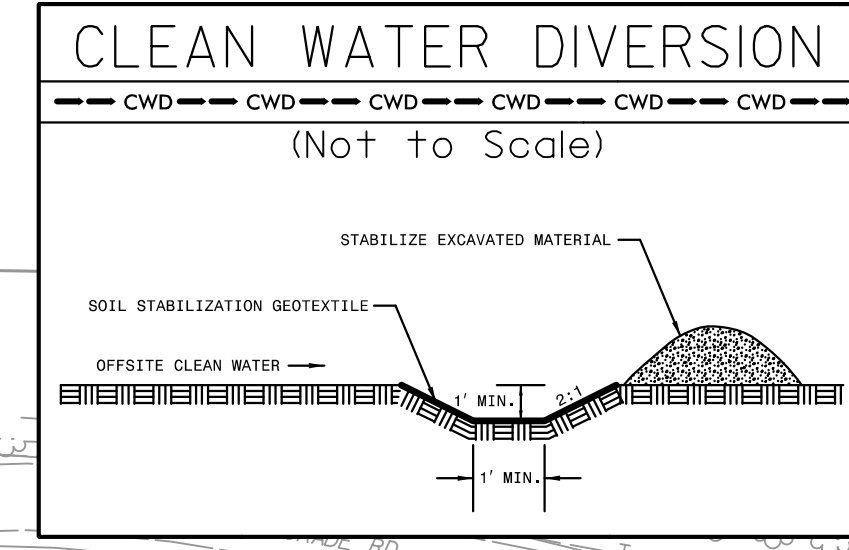
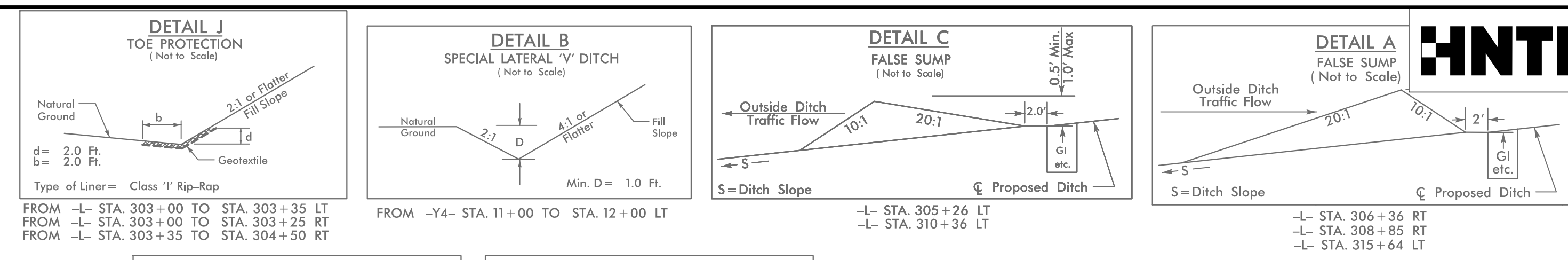


8/17/99

PROJECT REFERENCE NO. <i>R-2915C</i>	SHEET NO. <i>EC-28/CONST.08</i>
RW SHEET NO.	
ROADWAY DESIGN ENGINEER	HYDRAULICS ENGINEER



Place Matting for Erosion Control on Slope as Work Allows.  
-L- Sta. 303+00 to Sta. 303+50 LT

INSTALL MATTING FOR EROSION CONTROL IN PROPOSED DITCH LINES. (SEE MATTING SUMMARY)

80 x 40 x 3  
2 inch Skimmer  
with 1.625 inch  
Orifice Diameter  
11 ft. weir  
ID 8.1

Place Matting for Erosion Control on Slope as Work Allows.  
-L- Sta. 303+00 RT to -Y4- Sta. 13+00 RT

75 x 15 x 3  
Qty: 3 ID 8.4

80 x 15 x 3  
1.5 inch Skimmer  
with 0.875 inch  
Orifice Diameter  
4 ft. weir  
ID 9.3

Place Matting for Erosion Control on Slope as Work Allows.  
-L- Sta. 307+00 to Sta. 315+00 RT

UTILIZE FABRIC INSERT INLET PROTECTION DEVICE IN LIEU OF ROCK INLET SEDIMENT TRAP TYPE 'C' TO AVOID IMPOUNDING RUNOFF ON ROADWAY OPEN TO PUBLIC AND AS DIRECTED.

MATCH TO SHEET 7 -L- STA. 303+00.00

MATCH TO SHEET 21 -Y4- STA. 13+00

MATCH TO SHEET 9 -L- STA. 316+00.00

REVISIONS

12:41:28 PM  
\\hntb\p\2915C.ec\_PSH8.dgn  
\$\$\$\$  
\$\$\$\$  
\$\$\$\$