

BEGIN CONSTRUCTION R-2915C
-L- STA 250+83+/-

-L- STA 251+72+/-
-L- STA 254+37+/-

USING FLAGGERS,
CONSTRUCT TEMP ACCESS
FROM -Y2- TO -L-
EST 912 SF

USING RSD 1101.02
(3 OF 15) CLOSE
RIGHT LANE

REMOVE MERGE ARROWS
(5 EACH)

REMOVE CONFLICTING
PAVEMENT MARKING.

REFER TO SHEET TMP-60 FOR
CUT SECTION(S).

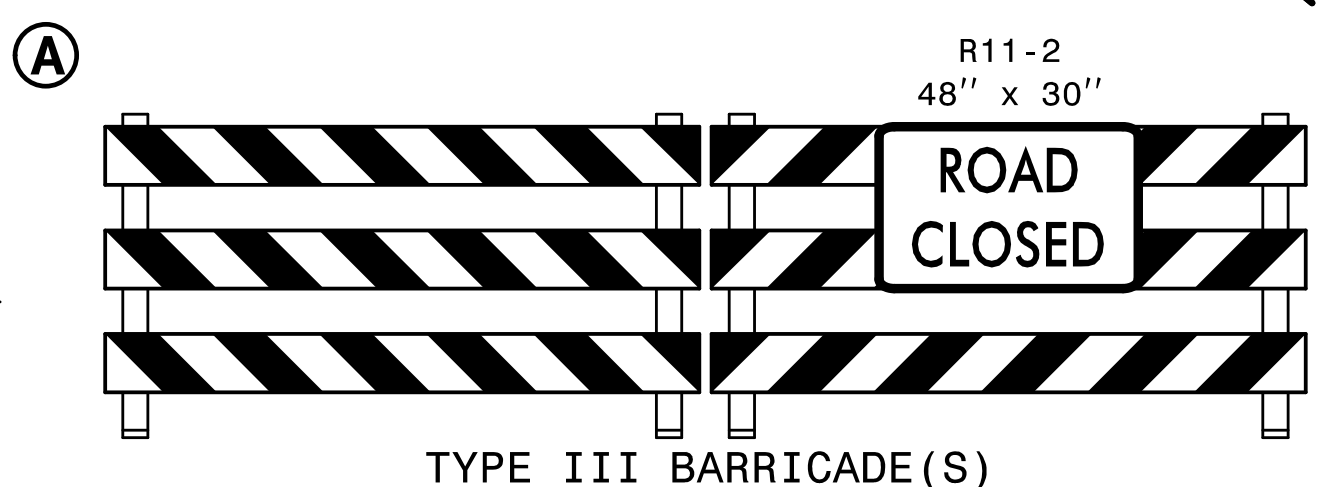
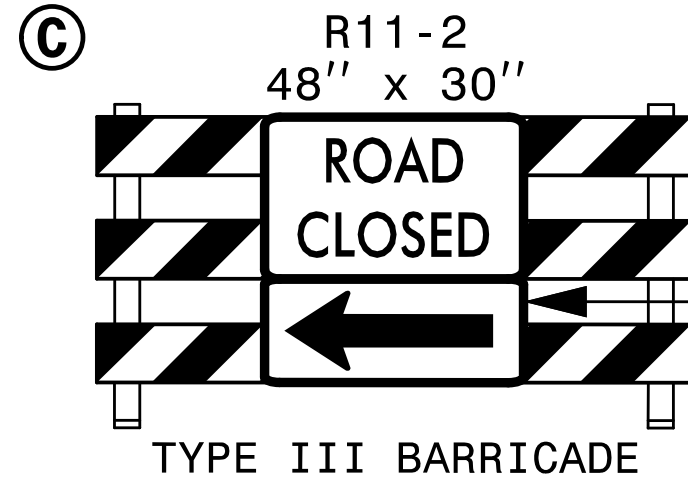
REMOVE CONFLICTING PAVEMENT
MARKING.

END CONSTRUCTION
-Y1A- STA 12+50+/-

END CONSTRUCTION
-Y2- STA 14+73+/-

END CONSTRUCTION
-Y2A- STA 10+65+/-

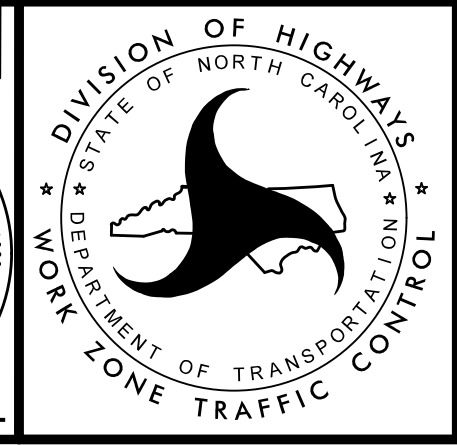
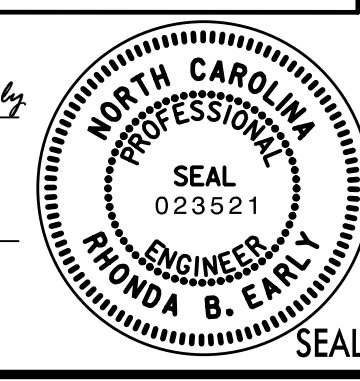
USE TEMPORARY STONE TO MAINTAIN
EXISTING ACCESS UNTIL SHIFTED TO NEW -Y2-.



DOCUMENT NOT CONSIDERED FINAL
UNLESS ALL SIGNATURES COMPLETED

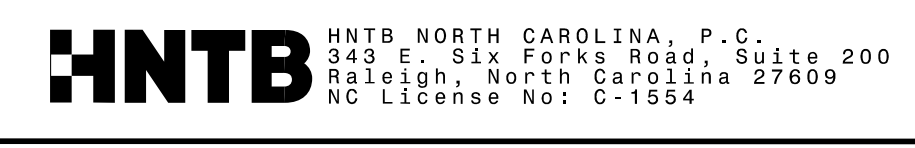
APPROVED BY:
Rhonda B. Early
F34CAFAC68F48A...

DATE:
7/2/2016



TRANSPORTATION
MANAGEMENT PLAN

PHASE III
DETAIL



3:27:34 PM
\\TC\PROJECTS\R2915C-TC_P3001.dgn
\$\$\$\$\$USERNAME\$\$\$\$\$