

STEP 6
 USING FLAGGERS TO SHIFT TRAFFIC AS NEEDED,
 MILL AND CONSTRUCT FROM STA 259+00+/- TO STA
 263+50+/- LEFT SIDE TO 1.5" BELOW PROPOSED ELEVATION,
 SHIFT TRAFFIC TO LEFT SIDE (TO NEW PATTERN) AND
 MILL RIGHT SIDE. OPEN LANES AND FINISH PAVEMENT MARKINGS.

BEGIN R-2915C
 -L- STA 250+83+/-

-L- STA 251+72+/-
 -L- STA 254+37+/-

-L-
 US 221

-Y1REV-
 SR 1216
 (LEMLY RD)

-L- STA 259+00+/-

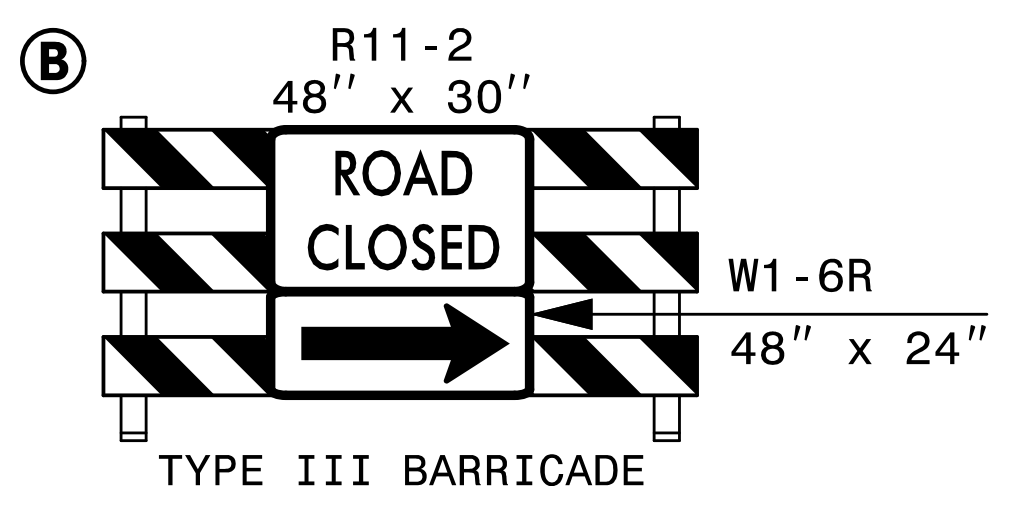
-Y2-
 (IVY LN)

-Y2A-
 (HEMLOCK LN)

-L- STA 263+50+/-
 BEGIN C&G (LT)

MATCHLINE
 -L- STA 269+00+/-
 SEE SHEET TMP-28

TB 2GI W/ STEEL PLATE
 (RETAIN FROM PHASE I)



REMOVE CONFLICTING PAVEMENT MARKING.

REFER TO SHEETS TMP-42 & TMP-42A FOR CUT SECTION(S).

3:23:17 PM
 C:\TCP\R2915C_Tc_P2D01.dgn
 \$\$\$USERNAME\$\$\$

HNTB
 HNTB NORTH CAROLINA, P.C.
 343 E. SIX FORKS ROAD, SUITE 200
 RALEIGH, NORTH CAROLINA 27609
 NC LICENSE NO: C-1554

DOCUMENT NOT CONSIDERED FINAL
 UNLESS ALL SIGNATURES COMPLETED

APPROVED BY:
 Rhonda B. Early
 F34CFA5AC8BF48A...

DATE:
 7/2/2016

PROFESSIONAL ENGINEER
 NORTH CAROLINA
 SEAL
 023521
 RHONDA B. EARLY

WORK * DIVISION OF HIGHWAYS *
 STATE OF NORTH CAROLINA *
 DEPARTMENT OF TRANSPORTATION *
 ZONE TRAFFIC CONTROL

TRANSPORTATION
 MANAGEMENT PLAN
 PHASE II
 DETAIL