

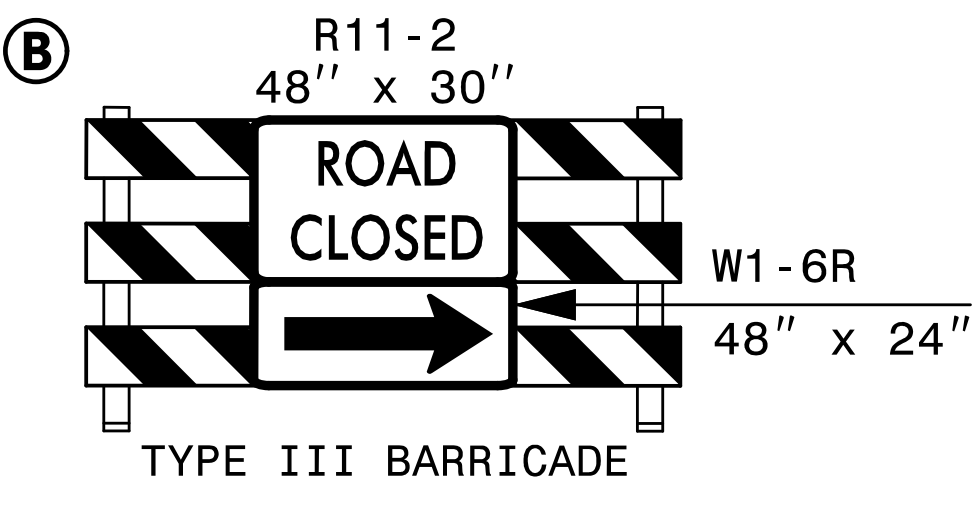
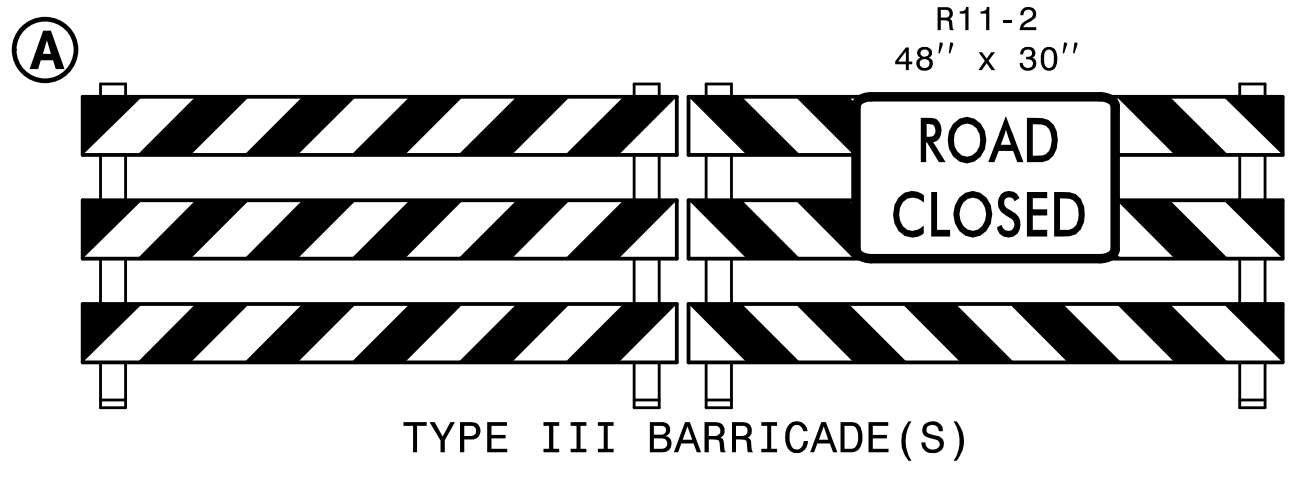
2 EST QUANTITY = 1,884 SF  
 TEMPORARY SHORING  
 FROM -L- STA 374+77+/-, 18.6' RT  
 TO -L- STA 375+55+/-, 24.3' RT  
 (SEE SHEET TMP-2F FOR  
 TEMPORARY SHORING NOTES)

3 EST QUANTITY = 525 SF  
 TEMPORARY SHORING  
 FROM -L- STA 376+00+/-, 88.0' RT  
 TO -L- STA 376+50+/-, 64.8' RT  
 (SEE SHEET TMP-2F FOR  
 TEMPORARY SHORING NOTES)

-L- STA 374+77+/-  
18.6' RT  
 SHORING 2  
 -L- STA 375+55+/-  
24.3' RT

SAW CUT AND REMOVE PART OF EXISTING CULVERT TO PROVIDE RIGHT ANGLE AND EXTEND CULVERT USING ALUMINUM BOX CULVERT (ALBC). REFER TO CULVERT STAGING PLANS. (LN-9) CONSTRUCT TRANSITION GRADE FROM PROPOSED AT STA 374+46+/- TO EXISTING AT STA 376+00+/- . SHORING #2 AND #3 REQUIRED.

UPON COMPLETION OF -Y9- FROM -L- TO STA 14+00+/- USING FLAGGERS AND WORKING IN A CONTINUOUS MANNER, CONSTRUCT -Y9REV- TIE TO EXISTING BY WEDGING EXISTING AS NEEDED AND SHIFTING TRAFFIC TO NEW ALIGNMENT AS POSSIBLE. (SEE TMP-15B)



REFER TO SHEETS TMP-23 & TMP-23A FOR CUT SECTION(S).

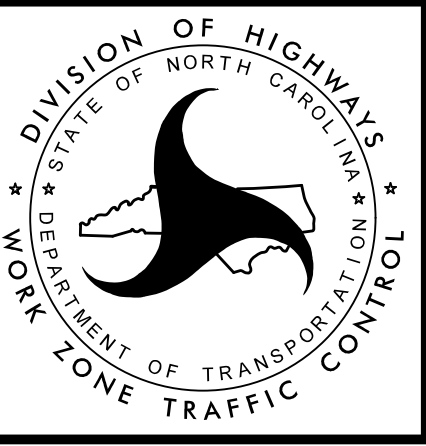
11/20/18 AM  
 \\TC\p\R2915C\_tc\_pid09a.dgn  
 HNTB



DOCUMENT NOT CONSIDERED FINAL  
UNLESS ALL SIGNATURES COMPLETED

APPROVED BY:  
Rhonda B. Early  
Professional Engineer  
F34CAFAC8BF48A

DATE:  
8/18/2016



TRANSPORTATION  
MANAGEMENT PLAN

PHASE I  
DETAIL