

5/28/16

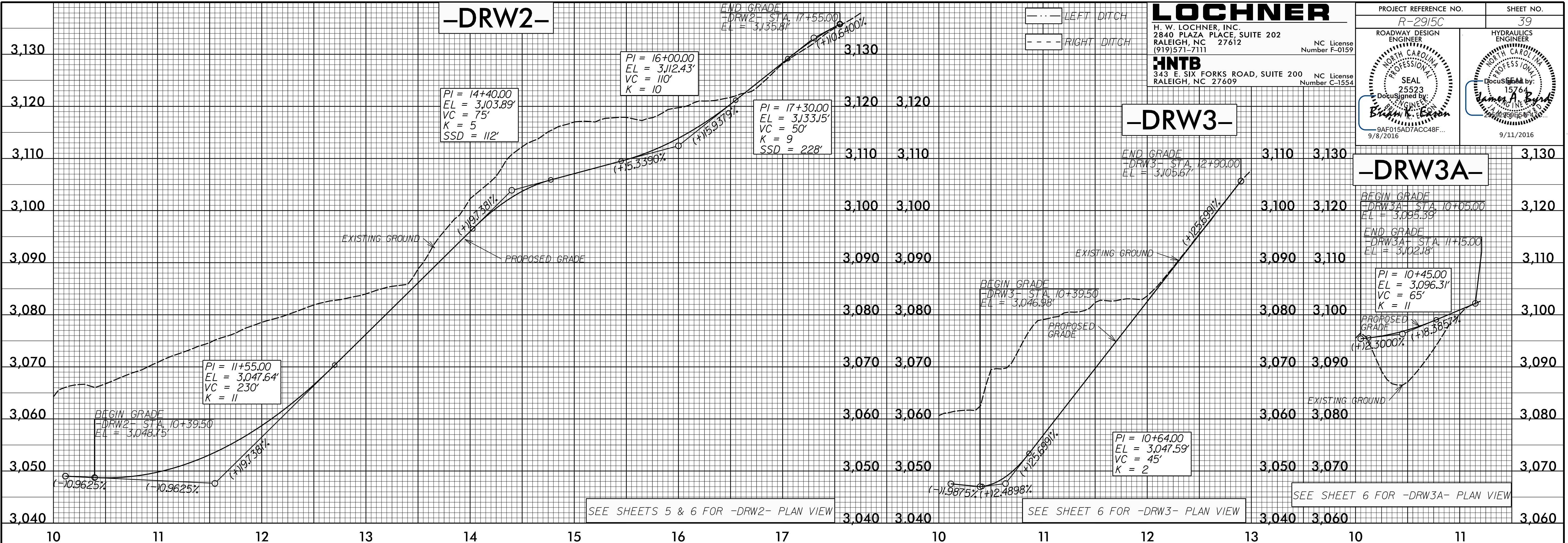
-DRW2-

LOCHNER

H. W. LOCHNER, INC.
2840 PLAZA PLACE, SUITE 202
RALEIGH, NC 27612
(919)571-7111
NC License Number F-0159

HNTB
343 E. SIX FORKS ROAD, SUITE 200
RALEIGH, NC 27609
NC License Number C-1554

PROJECT REFERENCE NO. R-2915C	SHEET NO. 39
ROADWAY DESIGN ENGINEER SEAL 25523 DocuSigned by: Bryan K. Epton 9AF015AD7ACC48F... 9/8/2016	HYDRAULICS ENGINEER SEAL 15764 DocuSigned by: James A. Byrd 9AF015AD7ACC48F... 9/11/2016



-DRW3A-

BEGIN GRADE
-DRW3A- STA. 10+05.00
EL = 3,095.39'

END GRADE
-DRW3A- STA. 11+15.00
EL = 3,021.81'

PI = 10+45.00
EL = 3,096.31'
VC = 65'
K = 11

PROPOSED GRADE
-DRW3A- STA. 11+15.00
EL = 3,021.81'
SLOPE: (+)18.385%

SEE SHEETS 5 & 6 FOR -DRW2- PLAN VIEW

SEE SHEET 6 FOR -DRW3- PLAN VIEW

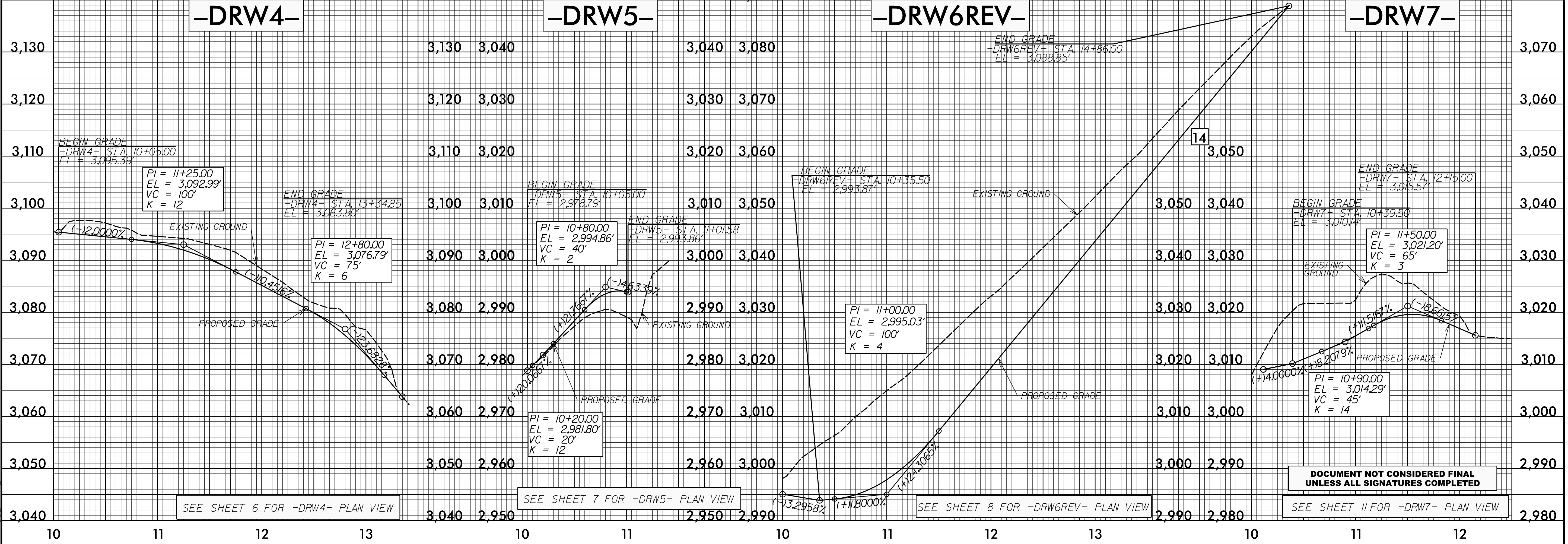
SEE SHEET 6 FOR -DRW3A- PLAN VIEW

-DRW4-

-DRW5-

-DRW6REV-

-DRW7-



SEE SHEET 6 FOR -DRW4- PLAN VIEW

SEE SHEET 7 FOR -DRW5- PLAN VIEW

SEE SHEET 8 FOR -DRW6REV- PLAN VIEW

SEE SHEET 11 FOR -DRW7- PLAN VIEW

DOCUMENT NOT CONSIDERED FINAL
UNLESS ALL SIGNATURES COMPLETED

01-SEP-2016 13:32
R:\Roadway\Projects\R2915C\rdy\pl\sheets.dgn