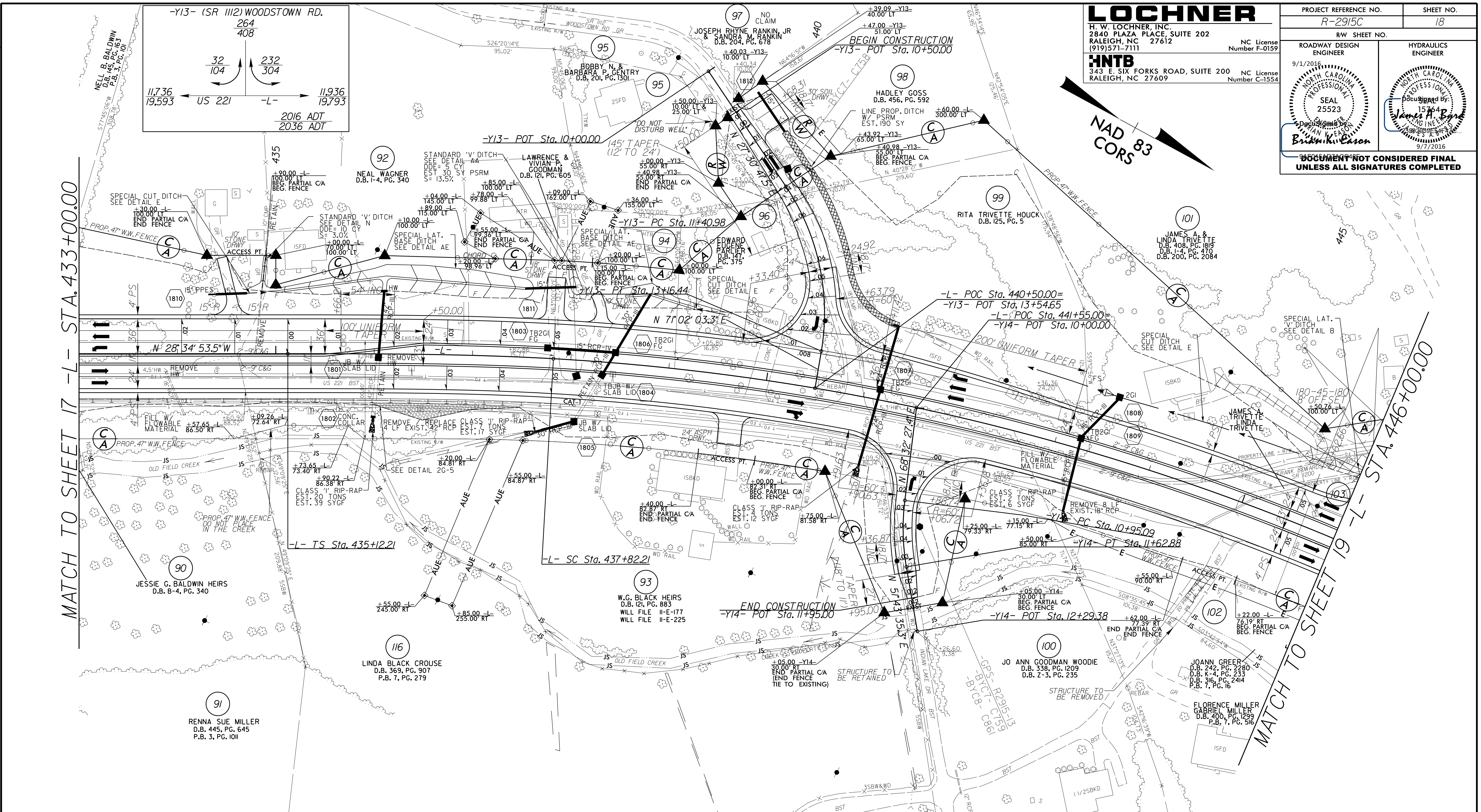


LOCHNER
 H. W. LOCHNER, INC.
 2840 PLAZA PLACE, SUITE 202
 RALEIGH, NC 27612
 (919)571-7111
 NC License Number F-0159

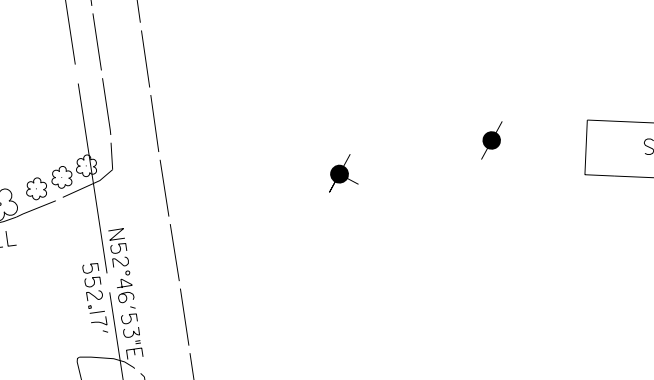
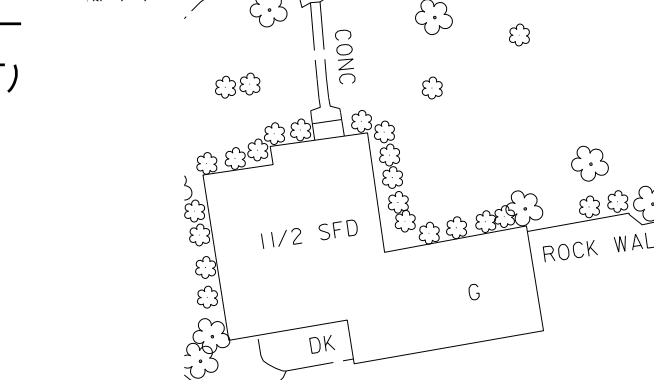
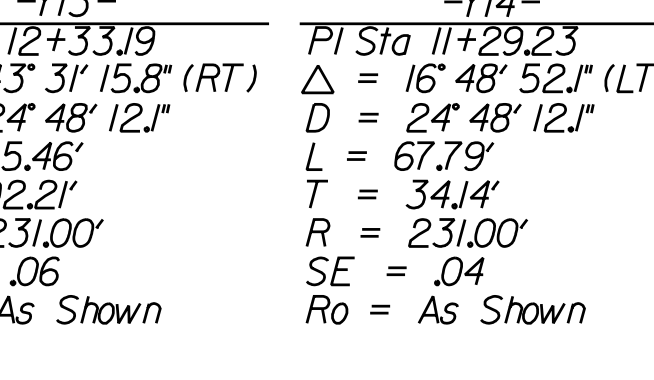
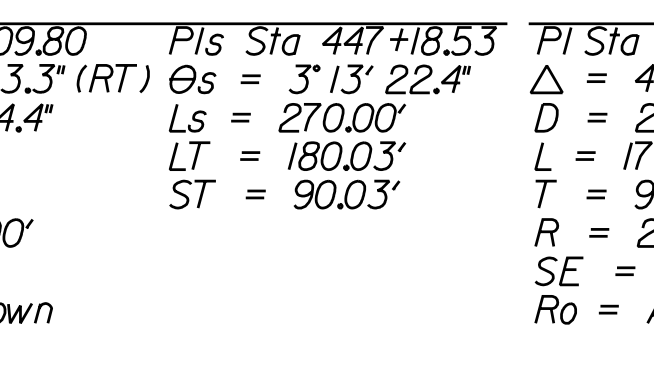
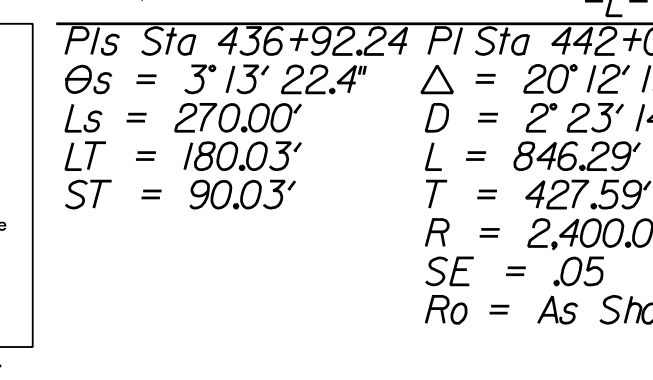
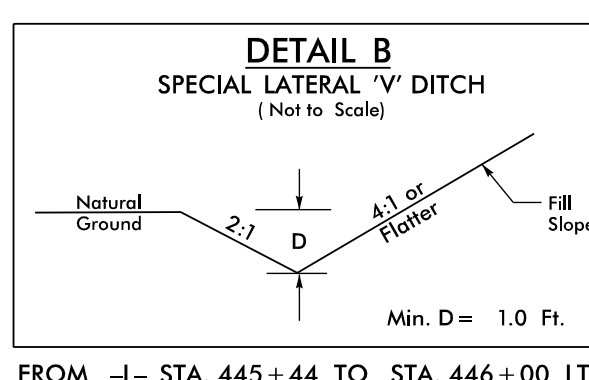
HNTB
 343 E. SIX FORKS ROAD, SUITE 200
 RALEIGH, NC 27609
 NC License Number C-1554

PROJECT REFERENCE NO. R-2915C	SHEET NO. 18
ROADWAY DESIGN ENGINEER 9/1/2016	HYDRAULICS ENGINEER
SEAL 25523 James H. Eason Professional Engineer 9/7/2016	SEAL 25523 James H. Eason Professional Engineer 9/7/2016
DOCUMENT NOT CONSIDERED FINAL UNLESS ALL SIGNATURES COMPLETED	



MATCH TO SHEET 17 -L- STA. 433+00.00

MATCH TO SHEET 19 -L- STA. 446+00.00



-Y13-	-Y13-	-Y13-	-Y13-	-Y14-
PI Sta 436+92.24	PI Sta 442+09.80	PI Sta 447+18.53	PI Sta 12+33.19	PI Sta 11+29.23
$\theta_s = 3^\circ 13' 22.4''$	$\Delta = 20^\circ 12' 13.3''$ (RT)	$\theta_s = 3^\circ 13' 22.4''$	$\Delta = 43^\circ 31' 15.8''$ (RT)	$\Delta = 16^\circ 48' 52.1''$ (LT)
$L_s = 270.00'$	$L = 2^\circ 23' 14.4''$	$L_s = 270.00'$	$D = 24^\circ 48' 12.1''$	$D = 24^\circ 48' 12.1''$
$LT = 180.03'$	$L = 846.29'$	$LT = 180.03'$	$L = 175.46'$	$L = 67.79'$
$ST = 90.03'$	$T = 427.59'$	$ST = 90.03'$	$T = 92.21'$	$T = 34.14'$
	$R = 2,400.00'$		$R = 231.00'$	$R = 231.00'$
	$SE = .05$		$SE = .06$	$SE = .04$
	$Ro = \text{As Shown}$		$Ro = \text{As Shown}$	$Ro = \text{As Shown}$

DRIVEWAY TURNOUTS ARE 10' RADII
UNLESS SHOWN OTHERWISE.

SEE SHEET 38 FOR -Y13- PROFILE

SEE SHEET 38 FOR -Y14- PROFILE

SEE SHEET 34 FOR -L- PROFILE

REVISIONS

3-AUG-2016 16:32
 R:\Roadway\PC\N2915C_rdy_PSH18.dgn
 R:\Roadway\PC\N2915C_rdy_PSH18.dgn