

8/17/19

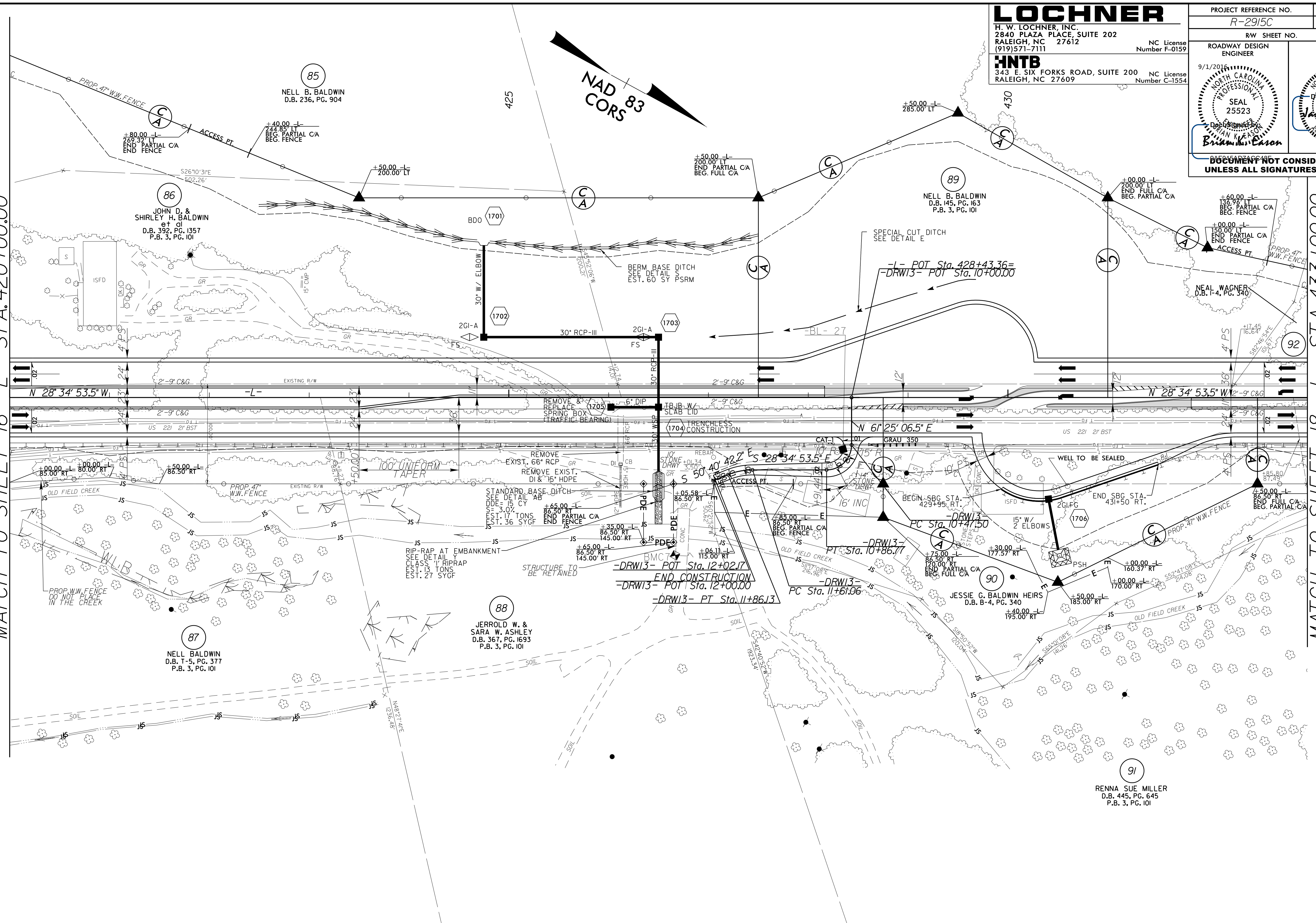
**LOCHNER**  
 H. W. LOCHNER, INC.  
 2840 PLAZA PLACE, SUITE 202  
 RALEIGH, NC 27612  
 (919)571-7111  
 NC License Number F-0159

**HNTB**  
 343 E. SIX FORKS ROAD, SUITE 200  
 RALEIGH, NC 27609  
 NC License Number C-1554

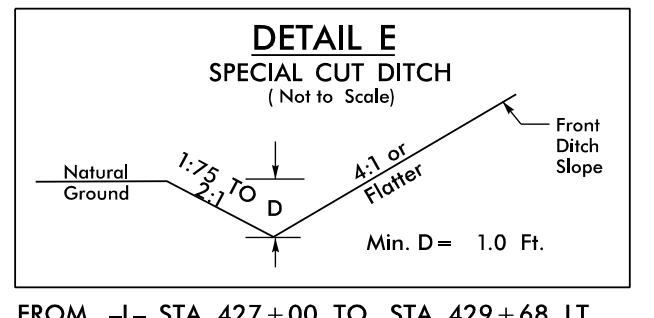
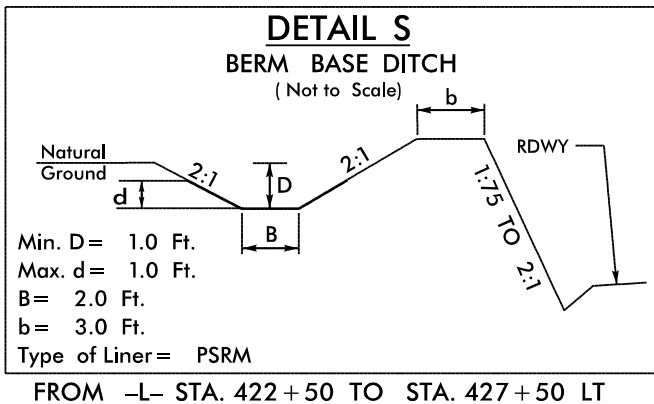
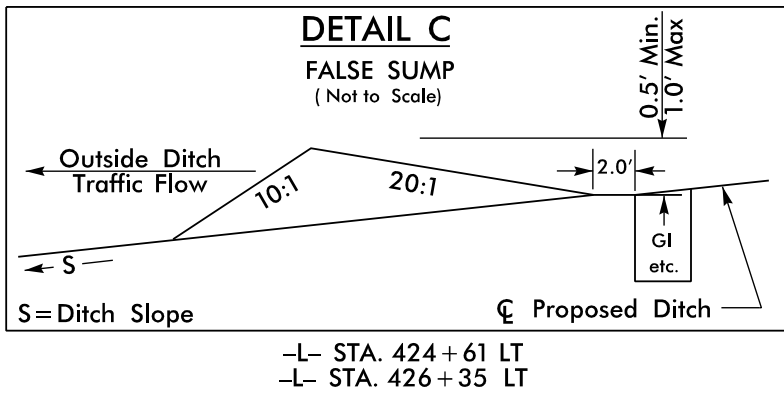
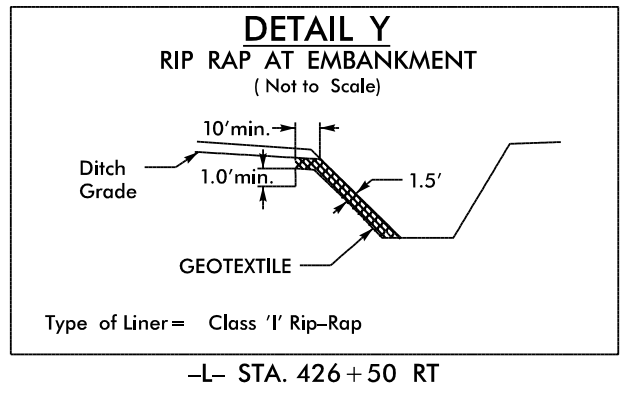
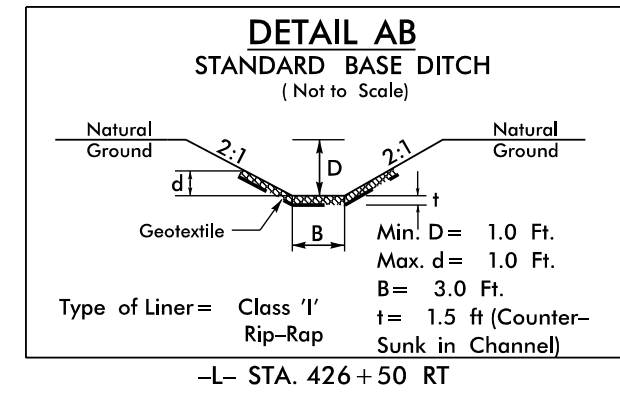
PROJECT REFERENCE NO. R-2915C	SHEET NO. 17
ROADWAY DESIGN ENGINEER BRITANNY ERSON	HYDRAULICS ENGINEER JAMES A. BYRN
9/1/2016	
DOCUMENT NOT CONSIDERED FINAL UNLESS ALL SIGNATURES COMPLETED	

MATCH TO SHEET 16 -L- STA. 420+00.00

MATCH TO SHEET 18 -L- STA. 433+00.00



REVISIONS



-DRW13-  
 PI Sta 10+72.50  
 $\Delta = 90^{\circ} 00' 00.0''$  (RT)  
 D = 229' 10" 59.2"  
 L = 39.27'  
 T = 25.00'  
 R = 25.00'  
 SE = As Shown  
 Ro = As Shown

-DRW13-  
 PI Sta 11+73.75  
 $\Delta = 22^{\circ} 05' 48.6''$  (LT)  
 D = 88' 08" 50.5"  
 L = 25.07'  
 T = 12.69'  
 R = 65.00'  
 SE = As Shown  
 Ro = As Shown

DRIVEWAY TURNOUTS ARE 10' RADII UNLESS SHOWN OTHERWISE.

SEE SHEET 40 FOR -DRW13- PROFILE

SEE SHEET 33 FOR -L- PROFILE

SEE SHEET 20-2 FOR PSH DETAIL

SEE SHEET 2B-13 FOR INTERSECTION DETAIL

01-SEP-2016 13:30  
 R:\Roadway\PC\N2915C\_rdy\_PSH17.dgn  
 BRITANNY ERSON